



2026 Super 40 Series

SAILING INSTRUCTIONS

- 1 **RULES** – see NoR 1 & C1
- 2 **ELIGIBILITY** – see NoR C3
- 3 **SCHEDULE** – see NoR 7, C4 and Amendment No.1 to the NoR
- 4 **MEASUREMENT & EQUIPMENT INSPECTION** – see NoR 8
- 5 **SCORING** – see C6
- 6 **TROPHIES & PRIZES** – see C7
- 7 **BERTHING** – see NoR 10
- 8 **HAUL-OUT RESTRICTIONS, DIVING EQUIPMENT & PLASTIC POOLS** – see NoR 12 & 13
- 9 **RISK STATEMENT** – see NoR 14

10 CHANGES TO SAILING INSTRUCTIONS

- 10.1 Changes to the schedule will be posted by 2000hrs on the day before they will take effect. Other changes will be posted before 0900hrs on the day they take effect.
- 10.2 Changes to the Sailing Instructions made afloat will be indicated by the display of Code Flag 3rd Substitute accompanied by two sound signals. This may be communicated orally.

11 SIGNALS MADE ASHORE

- 11.1 Signals made ashore will be displayed on the official flagstaff at the club.
- 11.2 The Warning Signal will not be made less than 60 minutes after “AP” is lowered ashore. This changes RRS Race Signals “AP”.

12 AREAS THAT RANK AS OBSTRUCTIONS

- 12.1 While racing in Pittwater, boats shall not sail within the area of water between registered moorings (including Police or NSW Maritime moorings) and the adjacent shoreline inside Pittwater. These areas rank as obstructions.

13 SCHEDULED STARTING TIMES & VHF COMMUNICATIONS

Day/Date	Race Format	Event	Time	VHF Ch.
Sat 14 February	Up to 2 Inshore Passage Races	First Warning Signal	1125hrs	VHF Ch.72
Sun 15 February	Up to 3 W/L races	First Warning Signal	1125hrs	VHF Ch.69

- 13.1 On the final day of the regatta no Warning Signal will be made after 1600hrs.

14 CLASS FLAGS

DIVISION	CLASS FLAG	BACKSTAY PENNANT
Super 40	Numeral Pennant 6	Orange Pantaeenius Pennant

15 TIME LIMIT

- 15.1 The Time Limit for each Inshore Races on Saturday 14 February is 120 minutes.
- 15.2 The Time Limit for each Windward/Leeward Race on Sunday 15 February is 75 minutes.
- 15.3 Boats failing to finish within the Time Limit shall be scored TLE. Boats scoring TLE shall score points 1 more than the number of boats to complete the course and finish in accordance with RRS28. Changes RRS 35, A4 & A5.

16 PENALTY SYSTEM

- 16.1 RRS 44.1 is changed so that a Two-Turns Penalty is replaced by the One-Turn Penalty, except that the penalty for breaking a rule of RRS Part 2 occurring within the zone as defined in the RRS shall be a Two-Turns Penalty.
- 16.2 **[DP]** Penalties for infringements other than RRS Part 2 are at the discretion of the Protest Committee and may be less than DSQ.

**17 PROTESTS AND REQUESTS FOR REDRESS**

- 17.1 The protest time limit is 90 minutes after the last boat finishes in the last race of that day.
- 17.2 Notices will be posted no later than 20 minutes after the protest time limit informing competitors of hearings in which they are parties or named as witnesses.
- 17.3 The penalty, if any, for any infringement of the rules other than RRS Part 2 is at the sole discretion of the Protest Committee and may be other than disqualification.
- 17.4 On the last day of the regatta a request for reopening a hearing or redress shall be delivered no later than 30 minutes after the decision was posted. Changes RRS 61.2(a).

SAILING INSTRUCTIONS – APPENDIX A INSHORE COURSES**18 COURSE AREA**

- 18.1 Course Area A: Pittwater and Broken Bay

19 MARKS & MARK DESCRIPTIONS

CODE	NAME	DESCRIPTION	Approximate Position
AV	Avalon (Clareville)	Fixed Yacht Mark, positioned northwest of Avalon Sailing Club at approximately;	33° 37.6' S, 151° 18.6' E
CR	Coasters Retreat	Yellow Inflatable mark laid approximately 200m southeast of Mackerel Beach Mark	33° 35.85' S, 151° 18.45' E
EB	Ellis Buoy	Yellow Inflatable mark laid southwest of the Avalon mark	
F	Windward Mark	Yellow Inflatable mark laid approx. 0.5nm to windward of the start line. Bearing displayed on Committee Vessel.	
ISP	Inner Stokes Point	Yellow Inflatable mark laid approximately 100m southwest of Stokes Point fixed yacht mark	
LN	Longnose Point	Fixed Yacht Mark, positioned southwest of Longnose Point, at approximately;	33° 37.4' S, 151° 18.0' E
MB	Mackerel Beach	Fixed Yacht Mark, positioned between Currawong and Great Mackerel Beach, at approximately;	33° 35.7' S, 151° 18.3' E
RP	Rocky Point	Fixed Yacht Mark, positioned northeast of Rocky Point, at approximately;	33° 37.9' S, 151° 17.4' E
SDP	Soldiers Point	Fixed Yacht Mark, pyramid north of Soldiers Point, at approximately;	33° 36.0' S, 151° 18.3' E
SP	Stokes Point	Fixed Yacht Mark, positioned around 200m northwest of Stokes Point, at approximately;	33° 36.7' S, 151° 18.8' E
SPC	Salt Pan Cove	Yellow Inflatable mark laid northwest of Salt Pan Cove Maritime Beacon, towards Scotland Island	
TB	Towlers Bay	Fixed Yacht Mark, positioned around 400m from the shoreline in Morning Bay (Towlers Bay), at approximately;	33° 37.5' S, 151° 17.6' E
TP	Taylor's Point	Fixed Yacht Mark, positioned northwest of Taylor's Point Wharf, at approximately;	33° 37.9' S, 151° 18.3' E
WP	Woody Point	Yellow Inflatable mark laid approximately 100m east of Woody Point.	

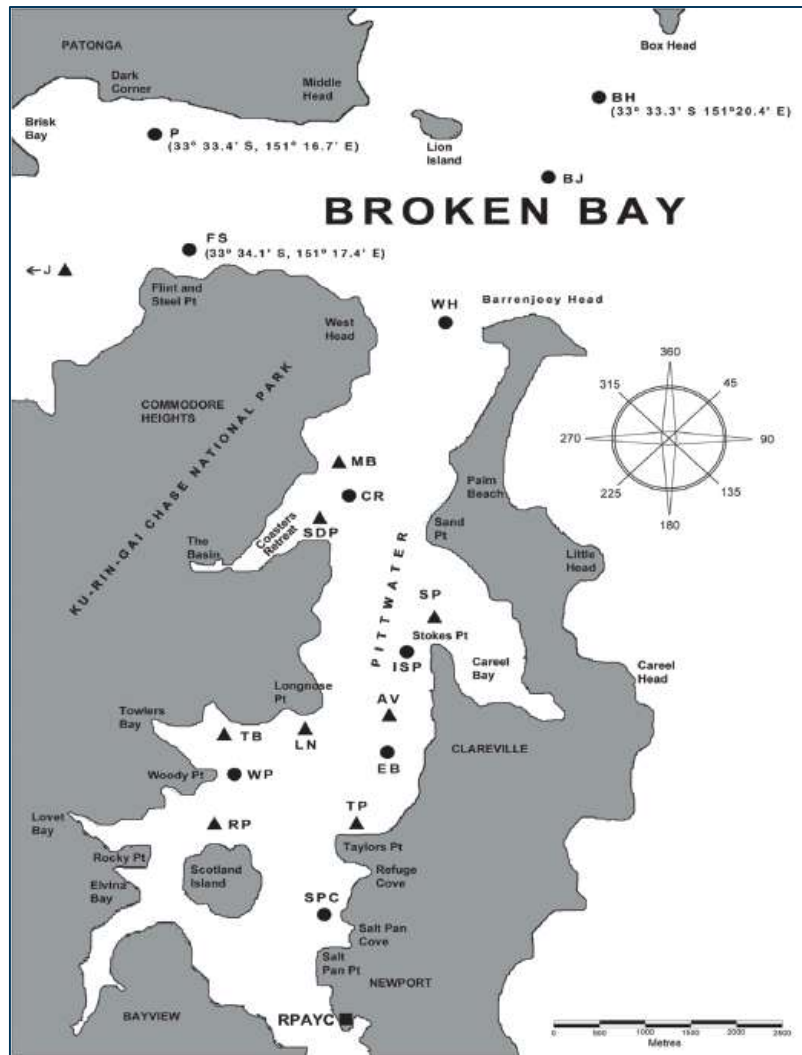


20 START & FINISHING LINE

- 20.1 The Starting area for the first race of the day will be announced by the Race Officer. The starting area for the second race shall be announced at the end of the first race.
- 20.2 The race committee will announce on VHF Ch. 72 the approximate position of the finishing line.
- 20.3 The starting and finishing lines shall be between a staff displaying, an orange flag at the start and a blue flag at the finish, on the Race Committee Boat and a **black and white** checked inflatable mark nearby.
- 20.4 The finishing vessel may be different to the starting vessel.

21 COURSE

- 21.1 The Course will be selected from the list of courses on the Course Sheet.
- 21.2 The course to be sailed shall be announced by the race committee on VHF Ch.72 no later than the Warning Signal for each division and displayed from the Committee Vessel.
- 21.3 Competitors may request repeats of the course without infringing RRS41, or a repeat of any other announcement by the Race Committee.





RPAYC

2026 Pittwater Regatta

COURSE SHEET

Course No.	Wind	Laid Inflatable Mark			All marks are to be rounded to Starboard unless indicated as Port - (P)											Approx. NM
		Start	ISP	RP	LN	TP	RP	ISP	RP	Finish						
1	NE/SW	Start	ISP	RP	LN	TP	RP	ISP	RP	Finish					9.1	
2	NE/SW	Start	ISP	RP	ISP	TP	RP	Finish							7.4	
3	E	Start	EB	SPC	TB	EB	TB	EB	SPC	TB	EB	Finish			8.0	
4	E	Start	EB	TB	EB	SPC	TB	EB	TB	EB	Finish				6.2	
5	SE/NW	Start	SPC(P)	CR	TP	CR	SPC	TB	Finish						9.5	
6	SE/NW	Start	SPC(P)	CR	TP	TB	SPC	TB	Finish						9.2	
7	S	Start	SPC(P)	CR	SPC	CR	Finish								11	
8	S	Start	SPC(P)	CR	SPC	LN	Finish								9.5	
9	W	Start	RP	TB	AV	TP	RP	TP	RP	TB	AV	TB	AV	Finish	8.2	
10	W	Start	RP	TB	AV	TP	RP	TP	RP	TB	AV	Finish			6.6	

SAILING INSTRUCTIONS – APPENDIX W/L RACES

22 COMMUNICATION

22.1 VHF Ch.69 will be used for communication for the races on Sunday 15 February 2026.

23 COURSE AREA

23.1 Course Area will be the waters of Pittwater.

24 MARKS, STARTING/FINISHING LINE

24.1 Mark 1 and the Gate marks shall be **pink** inflatable marks.

24.2 Mark 1a, the offset mark shall be a **blue** inflatable mark.

24.3 The “Change Mark” shall be a **orange** inflatable mark. When, in a subsequent change a new mark is replaced, it shall be by the original mark.

24.4 The starting and finishing lines shall be between a staff displaying, an orange flag at the start and a blue flag at the finish, on the Race Committee Boat and a **black** and **white** checked inflatable mark.

24.5 The finishing vessel may be different to the starting vessel.

25 COURSES

25.1 The course, compass bearing and approximate distance to Mark 1 shall be displayed by the Race Committee Boat.

25.2 Marks 1 and 1a shall be rounded to port. Mark 1a is an offset mark.

25.3 If one Gate mark is missing, boats shall round the existing mark to port.

25.4 Description of the courses:

Code	Courses
C2	Course 2: Start - 1 - 1a – Finish
C4	Course 4: Start - 1 - 1a – 2s/2p - 1 - 1a – Finish
C6	Course 6: Start - 1 - 1a – 2s/2p - 1 - 1a – 2s/2p - 1 - 1a – Finish

