



2026 Pittwater Cup

SAILING INSTRUCTIONS

- 1 **RULES** – see NoR 1 & B1
- 2 **COMMUNICATION** – NoR 4 & B2: VHF Ch. 77
- 3 **ELIGIBILITY** – see NoR B3
- 4 **SCHEDULE** – see NoR 7 & B5
- 5 **MEASUREMENT & EQUIPMENT INSPECTION** – see NoR 8
- 6 **SCORING** – see NoR B7
- 7 **TROPHIES & PRIZES** – see B8
- 8 **BERTHING** – see NoR 10
- 9 **HAUL-OUT RESTRICTIONS & DIVING EQUIPMENT & PLASTIC POOLS** – see NoR 12 & 13
- 10 **RISK STATEMENT** – see NoR 14

11 CHANGES TO SAILING INSTRUCTIONS

- 11.1 Changes to the schedule will be posted by 2000 on the day before they will take effect. Other changes will be posted before 0900hrs on the day they take effect.
- 11.2 Changes to the Sailing Instructions made afloat will be indicated by the display of Code Flag 3rd Substitute accompanied by two sound signals. This may be communicated orally.

12 SIGNALS MADE ASHORE

- 12.1 Signals made ashore will be displayed on the official flagstaff at the club.
- 12.2 The Warning Signal will not be made less than 60 minutes after “AP” is lowered ashore. This changes RRS Race Signals “AP”.

13 AREAS THAT RANK AS OBSTRUCTIONS

- 13.1 While racing in Pittwater, boats shall not sail within the area of water between registered moorings (including Police or NSW Maritime moorings) and the adjacent shoreline inside Pittwater. These areas rank as obstructions.

14 SCHEDULED STARTING TIMES

Saturday 14 February	First Warning Signal	1155hrs
Sunday 15 February	First Warning Signal	1125hrs

- 14.1 On the final day of the regatta no Warning Signal will be made after 1600hrs.

15 CLASS FLAGS

DIVISION	CLASS FLAG	BACKSTAY PENNANT
Division 3	Numeral Pennant 3	Pink Pantaenius Pennant
Division 4	Numeral Pennant 4	Yellow Pantaenius Pennant
Division 5	Numeral Pennant 5	Dark Blue Pantaenius Pennant

16 COURSE AREA

- 16.1 Course Area A: Pittwater and Broken Bay.

17 PENALTY SYSTEM

- 17.1 RRS 44.1 is changed so that a Two-Turns Penalty is replaced by the One-Turn Penalty, except that the penalty for breaking a rule of RRS Part 2 occurring within the zone as defined in the RRS shall be a Two-Turns Penalty.
- 17.2 **[DP]** Penalties for infringements other than RRS Part 2 are at the discretion of the Protest Committee and may be less than DSQ.

18 TIME LIMIT

- 18.1 The Time Limit for Saturday 14 February is 1700hrs.
- 18.2 The Time Limit for each race on Sunday 15 February is 120 minutes.



18.3 Boats failing to finish within the Time Limit shall be scored TLE. Boats scoring TLE shall score points 1 more than the number of boats to complete the course and finish in accordance with RRS28. Changes RRS 35, A4 & A5

19 PROTESTS AND REQUESTS FOR REDRESS

- 19.1 The protest time limit is 90 minutes after the last boat finishes in the last race of that day.
 19.2 Notices will be posted no later than 20 minutes after the protest time limit informing competitors of hearings in which they are parties or named as witnesses.
 19.3 The penalty, if any, for any infringement of the rules other than RRS Part 2 is at the sole discretion of the Protest Committee and may be other than disqualification. This changes RRS 63.5.
 19.4 On the last day of the regatta a request for reopening a hearing or redress shall be delivered no later than 30 minutes after the decision was posted.

20 MARKS

20.1 Marks and Mark descriptions:

CODE	NAME	DESCRIPTION	Approximate Position
AV	Avalon (Clareville)	Fixed Yacht Mark, positioned northwest of Avalon Sailing Club at approximately;	33° 37.6' S, 151° 18.6' E
BJH	Barrenjoey Headland	Eastern Headland at the entrance to Pittwater	
BXH	Box Head	Inflatable Mark, positioned east of Lion Island at approximately:	33° 33.3' S, 151° 20.4' E
CH	Challenger Head	Inflatable Mark, positioned approximately 200m north of Challenger Head	33° 35.13' S, 151° 15.05' E
CR	Coasters Retreat	Inflatable Mark approximately 200m southeast of Mackerel Beach Mark	33° 35.85' S, 151° 18.45' E
EB	Ellis Buoy	Inflatable Mark southwest of the Avalon mark	
F	Windward Mark	Inflatable Mark approx. 0.5nm to windward of the start line.	Bearing displayed by the Committee Boat
ISP	Inner Stokes Point	Inflatable Mark approximately 100m southwest of Stokes Point fixed yacht mark	
LN	Longnose Point	Fixed Yacht Mark, positioned southwest of Longnose Point, at approximately;	33° 37.4' S, 151° 18.0' E
PH	Pacific Head	Inflatable Mark, positioned approximately 0.2nm east of Pacific Head	33° 33.7' S, 151° 16.5' E
RP	Rocky Point	Fixed Yacht Mark, positioned northeast of Rocky Point, at approximately;	33° 37.9' S, 151° 17.4' E
SP	Stokes Point	Fixed Yacht Mark, positioned around 200m northwest of Stokes Point, at approximately;	33° 36.7' S, 151° 18.8' E
SPC	Salt Pan Cove	Inflatable Mark northwest of Salt Pan Cove Maritime Beacon, towards Scotland Island	
TB	Towlers Bay	Fixed Yacht Mark, positioned around 400m from the shoreline in Morning Bay (Towlers Bay), at approximately;	33° 37.5' S, 151° 17.6' E
TP	Taylor's Point	Fixed Yacht Mark, northwest of Taylor's Point Wharf, at approximately;	33° 37.9' S, 151° 18.3' E
WHL	West Head Land	Western Headland at the entrance to Pittwater	



RPAYC

21 START & FINISHING LINE

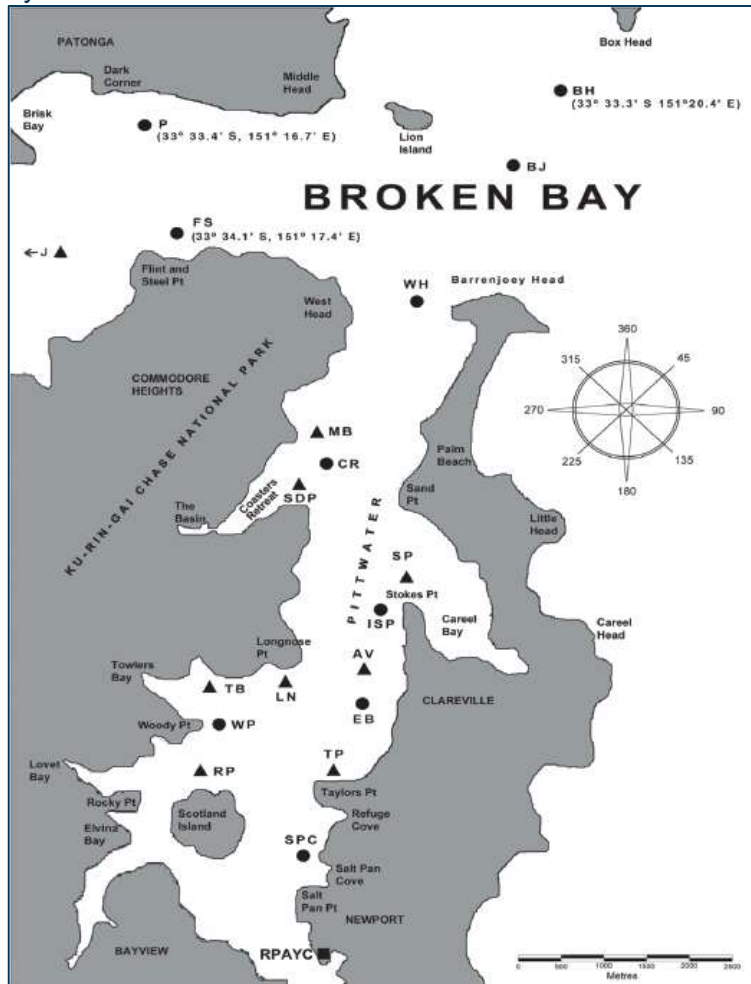
- 21.1 The Starting area for the races 1 and 2 will be south of Longnose Point. The starting area for the race 3 shall be announced at the end of race 2.
- 21.2 The race committee will announce on VHF Ch. 77 the approximate position of the finishing line.
- 21.3 The starting and finishing lines shall be between a staff displaying, an orange flag at the start and a blue flag at the finish, on the Race Committee Boat and a **Red** inflatable mark at the other end of the line.
- 21.4 The finishing vessel may be different to the starting vessel.

22 COURSE

22.1 The Course for Race 1 – Broken Bay Five Heads Race:

COURSE ID	Course
COURSE A	START – WHL (pass P) – PH (P) – CH (P) – BXH (S) – BJH (pass P) – FINISH
COURSE B	START – BJH (pass S) – BXH (P) – CH (S) – PH (S) – WHL (pass S) – FINISH

- 22.2 The Course to be sailed will be displayed from the Committee Vessel no later than the First Warning Signal.
- 22.3 The Courses for Races 2 and 3 will be selected from the list on the Course Sheet.
- 22.4 The course to be sailed shall be announced by the race committee on VHF Ch.77 no later than the Warning Signal for each division and displayed from the Committee Vessel.
- 22.5 Competitors may request repeats of the course without infringing RRS41, or a repeat of any other announcement by the Race Committee.





RPAYC

COURSE SHEET

Course No.	Wind	Yellow Inflatable Mark			All marks are to be rounded to Starboard unless indicated as Port - (P)										Approx. NM
		Start	ISP	RP	LN	TP	RP	ISP	RP	Finish					
1	NE/SW	Start	ISP	RP	LN	TP	RP	ISP	RP	Finish					9.1
2	NE/SW	Start	ISP	RP	ISP	TP	RP	Finish							7.4
3	E	Start	EB	SPC	TB	EB	TB	EB	SPC	TB	EB	Finish			8.0
4	E	Start	EB	TB	EB	SPC	TB	EB	TB	EB	Finish				6.2
5	SE/NW	Start	SPC(P)	CR	TP	CR	SPC	TB	Finish						9.5
6	SE/NW	Start	SPC(P)	CR	TP	TB	SPC	TB	Finish						9.2
7	S	Start	SPC(P)	CR	SPC	CR	Finish								11
8	S	Start	SPC(P)	CR	SPC	LN	Finish								9.5
9	W	Start	RP	TB	AV	TP	RP	TP	RP	TB	AV	TB	AV	Finish	8.2
10	W	Start	RP	TB	AV	TP	RP	TP	RP	TB	AV	Finish			6.6