

2026 ORC NSW State Championship

SAILING INSTRUCTIONS

- 1 **RULES** – see NoR 1 & A1
- 2 **COMMUNICATION** – NoR 4 & A2: **VHF Ch. 72**
- 3 **ELIGIBILITY** – see NoR A3
- 4 **CREW LIMITATIONS** – See NoR A5
- 5 **SCHEDULE** – see NoR 7, A6
- 6 **MEASUREMENT & EQUIPMENT CHECKS** – see NoR 8
- 7 **SCORING** – see NoR A8
- 8 **TROPHIES & PRIZES** – see NoR A9
- 9 **SUPPORT VESSELS** – see NoR 9
- 10 **BERTHING** – see NoR 10
- 11 **HAUL-OUT RESTRICTIONS, DIVING EQUIPMENT & PLASTIC POOLS** – see NoR 12 & 13
- 12 **RISK STATEMENT** – see NoR 14
- 13 **CHANGES TO SAILING INSTRUCTIONS**
 - 13.1 Changes to the schedule will be posted by 2000hrs on the day before they will take effect. Other changes will be posted before 0900hrs on the day they take effect.
 - 13.2 Changes to the Sailing Instructions made afloat will be indicated by the display of Code Flag 3rd Substitute accompanied by two sound signals. This may be communicated orally.
- 14 **SIGNALS MADE ASHORE**
 - 14.1 Signals made ashore will be displayed on the official flagstaff at the club.
 - 14.2 The Warning Signal will not be made less than 60 minutes after “AP” is lowered ashore. This changes RRS Race Signals “AP”.
- 15 **AREAS THAT RANK AS OBSTRUCTIONS**
 - 15.1 While racing in Pittwater, boats shall not sail within the area of water between registered moorings (including Police or NSW Maritime moorings) and the adjacent shoreline inside Pittwater. These areas rank as obstructions.
- 16 **RACE SCHEDULE**

Friday 13 th February	First Warning Signal	1155hrs
Saturday 14 th February	First Warning Signal	1125hrs
Sunday 15 th February	First Warning Signal	1125hrs
- 16.1 On the final day of the regatta no Warning Signal will be made after 1600hrs.
- 17 **TARGET TIMES & TIME LIMITS**

Race	Target Time	Time Limit
Offshore Race	3.5-4.5 hours	No Time limit
Inshore Races	75 mins (each race)	120 minutes (each race)
Windward/Leeward (Offshore)	45 minutes (each race)	75 minutes (each race)
- 17.1 Failure to meet the Target Times shall not be grounds for redress. Changes RRS 61.4(b)(1)
- 17.2 If no boat sails the course and does not finish in accordance with RRS28 within the time limit the race shall be abandoned.
- 18 **PENALTY SYSTEM**
 - 18.1 RRS 44.1 is changed so that a Two-Turns Penalty is replaced by the One-Turn Penalty, except that the penalty for breaking a rule of RRS Part 2 occurring within the zone as defined in the RRS shall be a Two-Turns Penalty.
 - 18.2 **[DP]** Penalties for infringements other than RRS Part 2 are at the discretion of the Protest Committee and may be less than DSQ.
- 19 **PROTESTS AND REQUESTS FOR REDRESS**
 - 19.1 The protest time limit is 90 minutes after the last boat finishes in the last race of that day.
 - 19.2 Notices will be posted no later than 20 minutes after the protest time limit informing competitors of hearings in which they are parties or named as witnesses.
 - 19.3 The penalty, if any, for any infringement of the rules other than RRS Part 2 is at the sole discretion of the Protest Committee and may be other than disqualification.
 - 19.4 On the last day of the regatta a request for reopening a hearing or redress shall be delivered no later than 30 minutes after the decision was posted.

**20 CLASS FLAGS**

DIVISION	CLASS FLAG	BACKSTAY PENNANT
Division 1	Numeral Pennant 1	Light Blue Pantaenius Pennant
Division 2	Numeral Pennant 2	Green Pantaenius Pennant

SAILING INSTRUCTIONS – APPENDIX B OFFSHORE COURSES**21 COURSE AREA**

21.1 Course Area B: Terrigal (North), Long Reef (South) and approximately 8nm East from BJ.

22 MARKS

22.1 Marks and Mark descriptions:

CODE	NAME	DESCRIPTION	Approximate Position
04	4 Nautical Mile	Orange Inflatable mark laid approximately 4NM to seaward from the Start Line	Bearing announced by the Race Committee
08	8 Nautical Mile	Orange Inflatable mark laid approximately 8NM to seaward from the Start Line	Bearing announced by the Race Committee
1PT	First Point	Orange Inflatable mark laid approximately at;	33° 29.6' S, 151° 29.2' E
2PT	Second Point	Orange Inflatable mark laid approximately at;	33° 30.8' S, 151° 27.6' E
BXH	Box Head	Orange Inflatable mark laid east of Lion Island, at approximately;	33° 33.3' S, 151° 20.4' E
BJ	Barrenjoey	Orange Inflatable mark laid in the vicinity of Barrenjoey Head, at approximately;	33° 33.9' S, 151° 20.4' E
ESM	Eastern Sea Mark	Orange Inflatable mark laid approximately 7.2NM east of Barrenjoey Lighthouse, at approximately;	33° 37.0' S, 151° 29.0' E
FS	Flint & Steel	Orange Inflatable mark laid northeast of Flint & Steel Point, at approximately;	33° 34.1' S, 151° 17.4' E
J	Juno	Fixed Yacht Mark, positioned around 100m east of Juno Point, at approximately;	33° 34.0' S, 151° 15.9' E
LI	Lion Island	Lion Island situated between West Head and Box Head	
LR	Long Reef	Orange Inflatable mark laid approximately 10NM southeast of Barrenjoey Headland, at approximately;	33° 45.0' S, 151° 22.0' E
MR	Maitland Reef	Orange Inflatable mark laid approximately 0.7NM east of Maitland Reef, at approximately;	33° 32.1' S, 151° 24.4' E
NR	Newport Reef	Orange Inflatable mark laid approximately 1.0NM east of Newport Reef, at approximately;	33° 40.0' S, 151° 21.0' E
P	Patonga	Orange Inflatable mark laid south of Eastern Point or Brisk Bay, at approximately;	33° 33.4' S, 151° 16.7' E
PB	Palm Beach	Orange Inflatable mark laid approximately at;	33° 35.7' S, 151° 20.5' E
TGL	Terrigal	Orange Inflatable mark laid approximately at;	33° 27.6' S, 151° 30.0' E

23 START & FINISHING LINE

23.1 The Starting area may be in the vicinity of Barrenjoey Mark. The Race Committee shall announce the position approximately 30 minutes before the start.

23.2 The Race Committee will announce on VHF Ch. 72 the approximate position of the finishing line.



23.3 The starting and finishing lines shall be between a staff displaying, an orange flag at the start and a blue flag at the finish, on the Race Committee Boat and a **black and white** checked inflatable mark laid nearby.

23.4 The finishing vessel may be different to the starting vessel.

24 COURSE

24.1 The course to be sailed shall be published on the morning of the race as a Notice to Competitors no later than 1000hrs.

SAILING INSTRUCTIONS – APPENDIX A INSHORE COURSES

25 COURSE AREA

25.1 Course Area A: Pittwater and Broken Bay

26 MARKS

26.1 Marks and Mark descriptions:

CODE	NAME	DESCRIPTION	Approximate Position
AV	Avalon (Clareville)	Fixed Yacht Mark, positioned northwest of Avalon Sailing Club at approximately;	33° 37.6' S, 151° 18.6' E
CR	Coasters Retreat	Yellow Inflatable mark laid approximately 200m southeast of Mackerel Beach Mark	33° 35.85' S, 151° 18.45' E
EB	Ellis Buoy	Yellow Inflatable mark laid southwest of the Avalon mark	
F	Windward Mark	Yellow Inflatable mark laid approx. 0.5nm to windward of the start line. Bearing displayed on Committee Vessel.	
ISP	Inner Stokes Point	Yellow Inflatable mark laid approximately 100m southwest of Stokes Point fixed yacht mark	
LN	Longnose Point	Fixed Yacht Mark, positioned southwest of Longnose Point, at approximately;	33° 37.4' S, 151° 18.0' E
MB	Mackerel Beach	Fixed Yacht Mark, positioned between Currawong and Great Mackerel Beach, at approximately;	33° 35.7' S, 151° 18.3' E
RP	Rocky Point	Fixed Yacht Mark, positioned northeast of Rocky Point, at approximately;	33° 37.9' S, 151° 17.4' E
SDP	Soldiers Point	Fixed Yacht Mark, pyramid north of Soldiers Point, at approximately;	33° 36.0' S, 151° 18.3' E
SP	Stokes Point	Fixed Yacht Mark, positioned around 200m northwest of Stokes Point, at approximately;	33° 36.7' S, 151° 18.8' E
SPC	Salt Pan Cove	Yellow Inflatable mark laid northwest of Salt Pan Cove Maritime Beacon, towards Scotland Island	
TB	Towlers Bay	Fixed Yacht Mark, positioned around 400m from the shoreline in Morning Bay (Towlers Bay), at approximately;	33° 37.5' S, 151° 17.6' E
TP	Taylors Point	Fixed Yacht Mark, positioned northwest of Taylors Point Wharf, at approximately;	33° 37.9' S, 151° 18.3' E
WP	Woody Point	Yellow Inflatable mark laid approximately 100m east of Woody Point.	

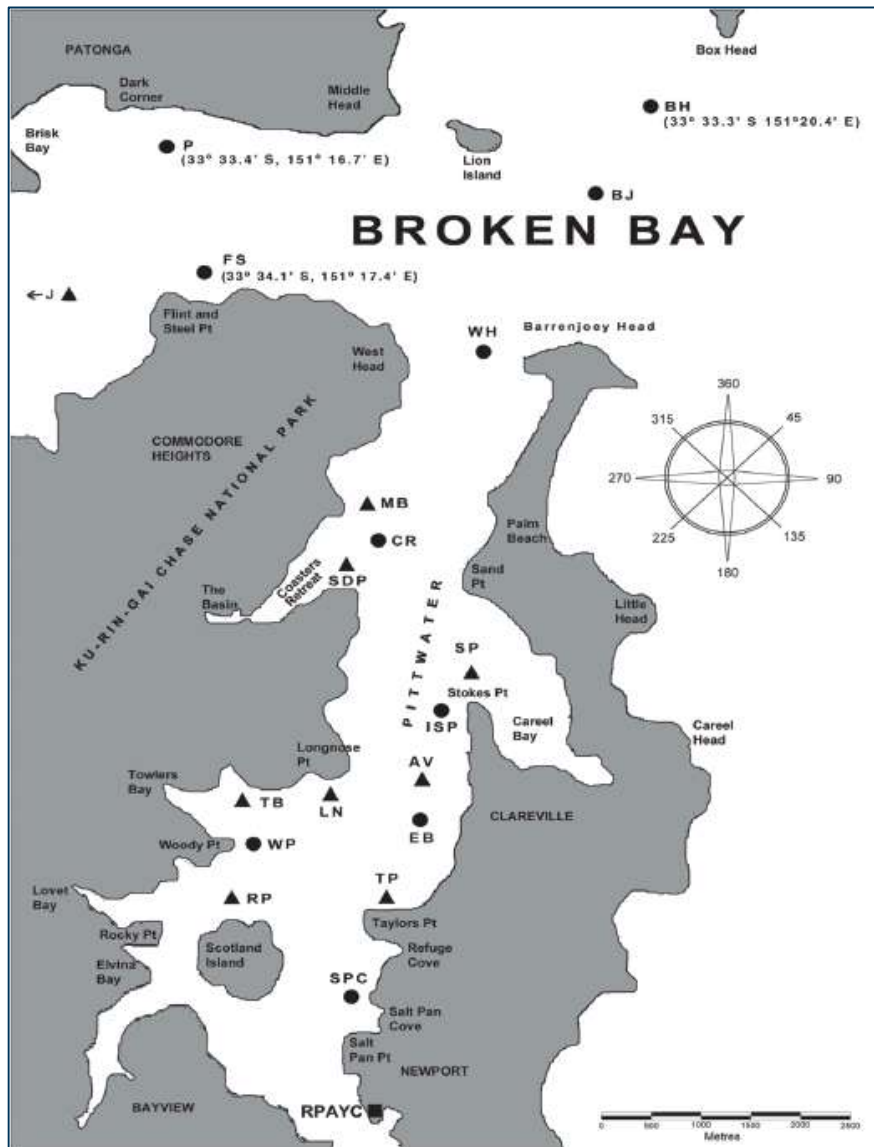


27 START & FINISHING LINE

- 27.1 The Starting area for the first race of the day will be announced by the Race Officer. The starting area for the second race shall be announced at the end of the first race.
- 27.2 The race committee will announce on VHF Ch. 72 the approximate position of the finishing line.
- 27.3 The starting and finishing lines shall be between a staff displaying, an orange flag at the start and a blue flag at the finish, on the Race Committee Boat and a **black and white** checked inflatable mark nearby.
- 27.4 The finishing vessel may be different to the starting vessel.

28 COURSE

- 28.1 The Course will be selected from the list of courses on the Course Sheet.
- 28.2 The course to be sailed shall be announced by the race committee on VHF Ch.72 no later than the Warning Signal for each division and displayed from the Committee Vessel.
- 28.3 Competitors may request repeats of the course without infringing RRS41, or a repeat of any other announcement by the Race Committee.





COURSE SHEET

Course No.	Wind	Laid Inflatable Mark			All marks are to be rounded to Starboard unless indicated as Port - (P)										Approx. NM
		Start	ISP	RP	LN	TP	RP	ISP	RP	Finish					
1	NE/SW	Start	ISP	RP	LN	TP	RP	ISP	RP	Finish					9.1
2	NE/SW	Start	ISP	RP	ISP	TP	RP	Finish							7.4
3	E	Start	EB	SPC	TB	EB	TB	EB	SPC	TB	EB	Finish			8.0
4	E	Start	EB	TB	EB	SPC	TB	EB	TB	EB	Finish				6.2
5	SE/NW	Start	SPC(P)	CR	TP	CR	SPC	TB	Finish						9.5
6	SE/NW	Start	SPC(P)	CR	TP	TB	SPC	TB	Finish						9.2
7	S	Start	SPC(P)	CR	SPC	CR	Finish								11
8	S	Start	SPC(P)	CR	SPC	LN	Finish								9.5
9	W	Start	RP	TB	AV	TP	RP	TP	RP	TB	AV	TB	AV	Finish	8.2
10	W	Start	RP	TB	AV	TP	RP	TP	RP	TB	AV	Finish			6.6



SAILING INSTRUCTIONS – APPENDIX C WINDWARD/LEEWARD COURSES

29 COURSE AREA

29.1 Course Area C will be used unless the Race Officer, in consultation with the Race Committee, deem conditions in the area to be unsuitable for racing and may decide to use Course Area A.

30 MARKS, STARTING/FINISHING LINE

30.1 Mark 1 and the Gate marks shall be **orange** inflatable marks.

30.2 Mark 3 shall be a **yellow** inflatable mark.

30.3 The “Change Mark” shall be a **pink** inflatable mark. When, in a subsequent change a new mark is replaced, it shall be by the original mark.

30.4 The starting and finishing lines shall be between a staff displaying, an orange flag at the start and a blue flag at the finish, on the Race Committee Boat and a **black** and **white** check inflatable mark.

30.5 The finishing vessel may be different to the starting vessel.

31 COURSES

31.1 The course, compass bearing and approximate distance to Mark 1 & Mark 3 shall be displayed by the Race Committee Boat.

31.2 Courses C2, C3, C4 and C5: Mark 1 shall be rounded to port.

31.3 Courses D2, D3, D4 and D5: Mark 3 shall be rounded to port.

31.4 If one Gate mark is missing, boats shall round the existing mark to port.

31.5 Description of the courses:

Code	Course
C2	Start - 1 - Finish
D2	Start - 3 - Finish
C3	Start – 1 – 2s/2p - Finish
D3	Start – 3 – 2s/2p - Finish
C4	Start - 1 - 2s/2p - 1 – Finish
D4	Start - 3 – 2s/2p - 3 – Finish
C5	Start - 1 – 2s/2p - 1 – 2s/2p – Finish
D5	Start - 3 – 2s/2p - 3 – 2s/2p – Finish

