

PITTWATER TO
COFFS HARBOUR
YACHT RACE



39th Pittwater to Coffs Harbour Yacht Race

Skipper's Briefing

Content



- Communication
- Tracking
- Start
- Finish
- Berthing
- Weather

Communication (SI 9, 10 & Appendix A)



- VHF Ch. 77 at Start and Finish – SI 9
- Check in at the Start – SI 10
- Reporting during the race – no skeds
- Must communicate Retirement from race
- Finish – text finish time to
0427 477 854: SI 18
- Declarations – only if you are taking a penalty or reporting a breach of the rules

Tracking



- Trackers are turned on and working
- Tracker Failure – we will contact you
- Tracker Links at the end of the presentation
- Low bandwidth links: integrate with navigation software
- Player Link
- Download the App: YB Races

Start

**PITTWATER TO
COFFS HARBOUR
YACHT RACE**



- Lifejackets & Safety Harnesses on
- Start time:
- 1300hrs: Monohulls
- 1305hrs: Multihulls
- Red inflatable inner distance mark at Starboard end. Do not go between the mark and the boat.

The Finish



- Call Race Committee on VHF 77 when 5nm from the finish
- Finish line is formed by the leading lights – make sure you have completely crossed the leading lights before turning into Coffs Harbour
- Outer Distance Mark (not laid) SI 18.3

Berthing – Coffs



- Berths have been allocated in Star Marina's Coffs Harbour International Marina
- Met by boat and guided to berth
- You will require fenders and warps – marina is being redeveloped and no fendering fitted
- Met at berth by volunteers – please hand over tracker in exchange for beer and food vouchers
- Coffs Harbour Yacht Club open throughout the finish

ORC Weather Routing Scoring



- New for this year – Amendment No.1 to the Notice of Race
- First Time used in Australia
- Weather Routing Scoring – Information sheet available
- ORC Ratings calculated and before 1100hrs Friday 11th April

Weather – Roger (Clouds) Badham

- Friday 11th April

WIND

NW/5 shift to ENE/7-10 around start time
ENE/8-12 for the afternoon and night.

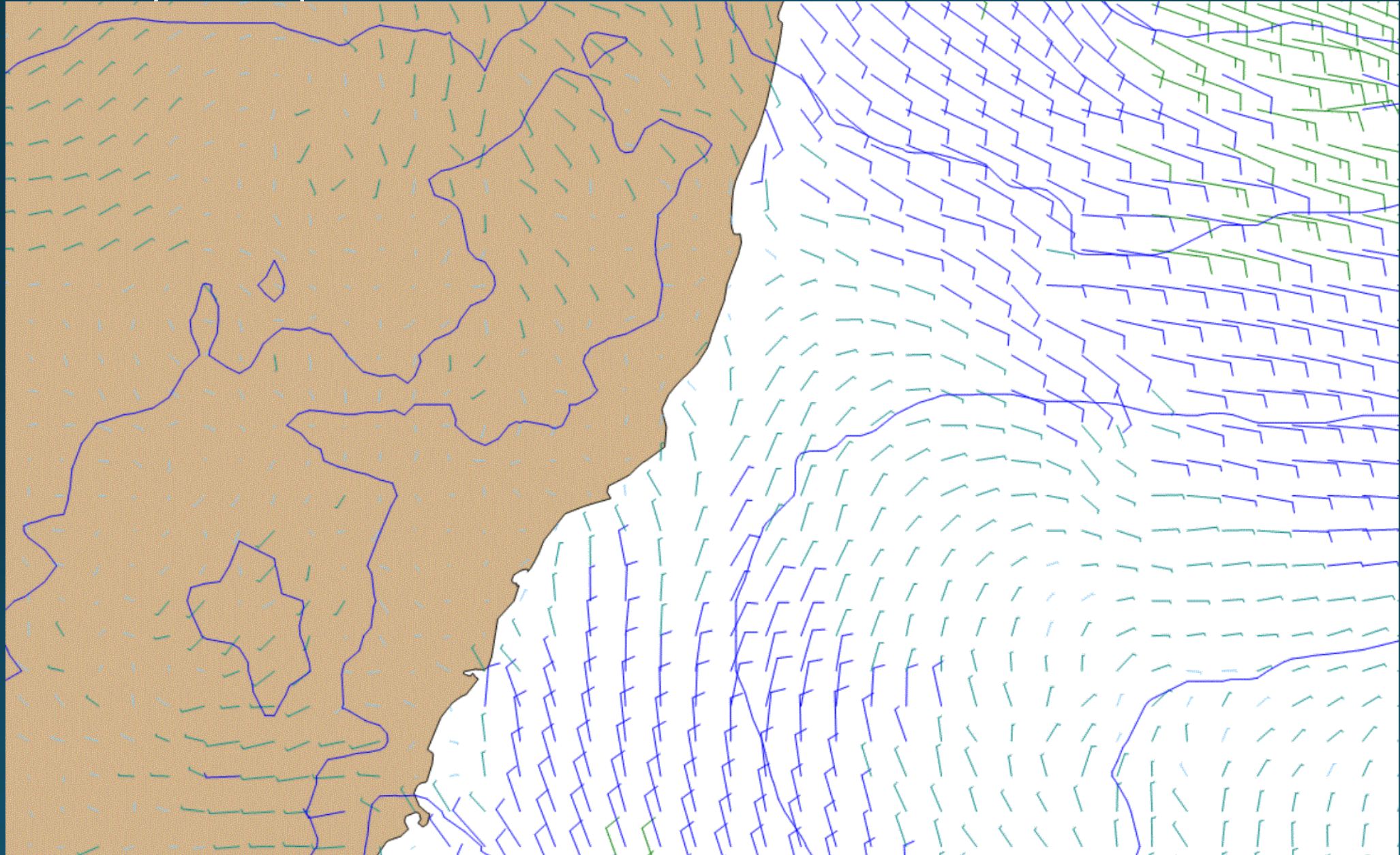
WAVES/SWELL.

1m E swell and <1m wind waves

WEATHER.

Fairly sunny during the day – a few showers in the north at night.

- Friday 11th April – 1000hrs



- Friday 11th April – 2200hrs

Saturday 12th April

WIND.

E/5-10 morning with E/7-15 in the afternoon and ESE/8-14 at night; more consistent wind away from the coast.

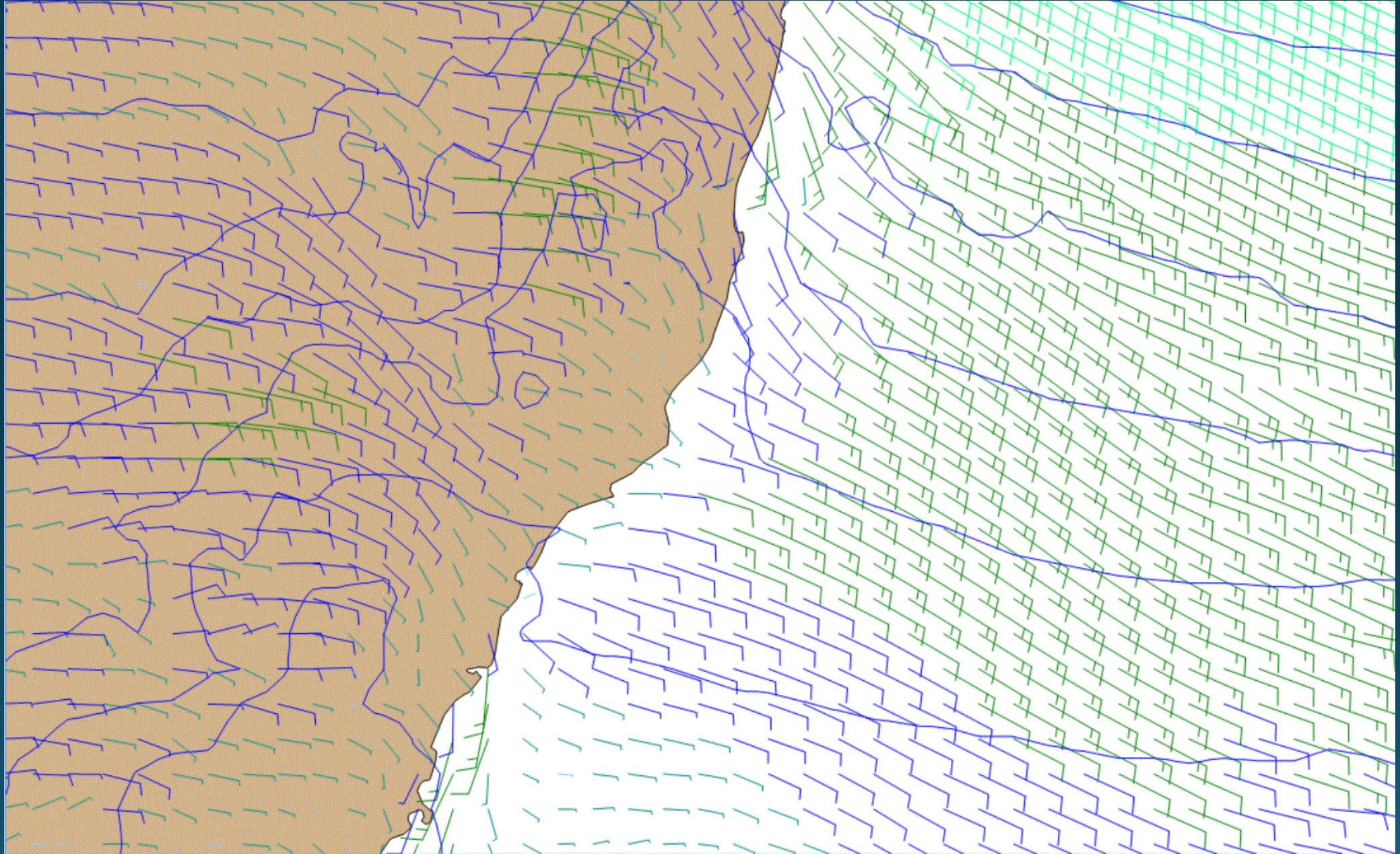
WAVES/SWELL

1.5m ENE swell and 1m wind waves

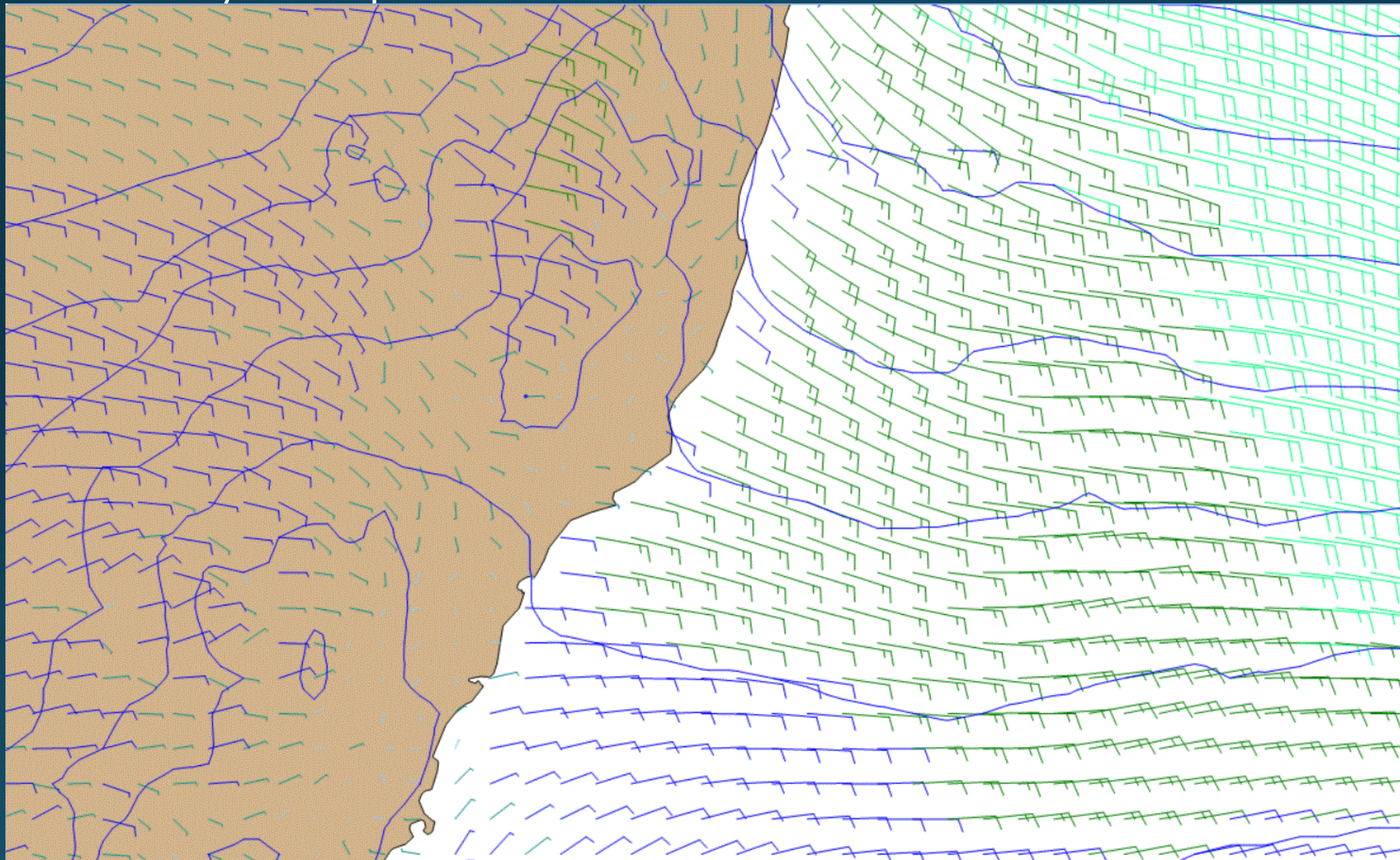
WEATHER

Fairly cloudy with showers – local heavy falls possible and cells probably slow moving.

- Saturday 12th April – 1000hrs



• Saturday 12th April – 2200hrs



Sunday 13th April

WIND

ESE-S/5-12 in close and ESE-SE/13-16 offshore.

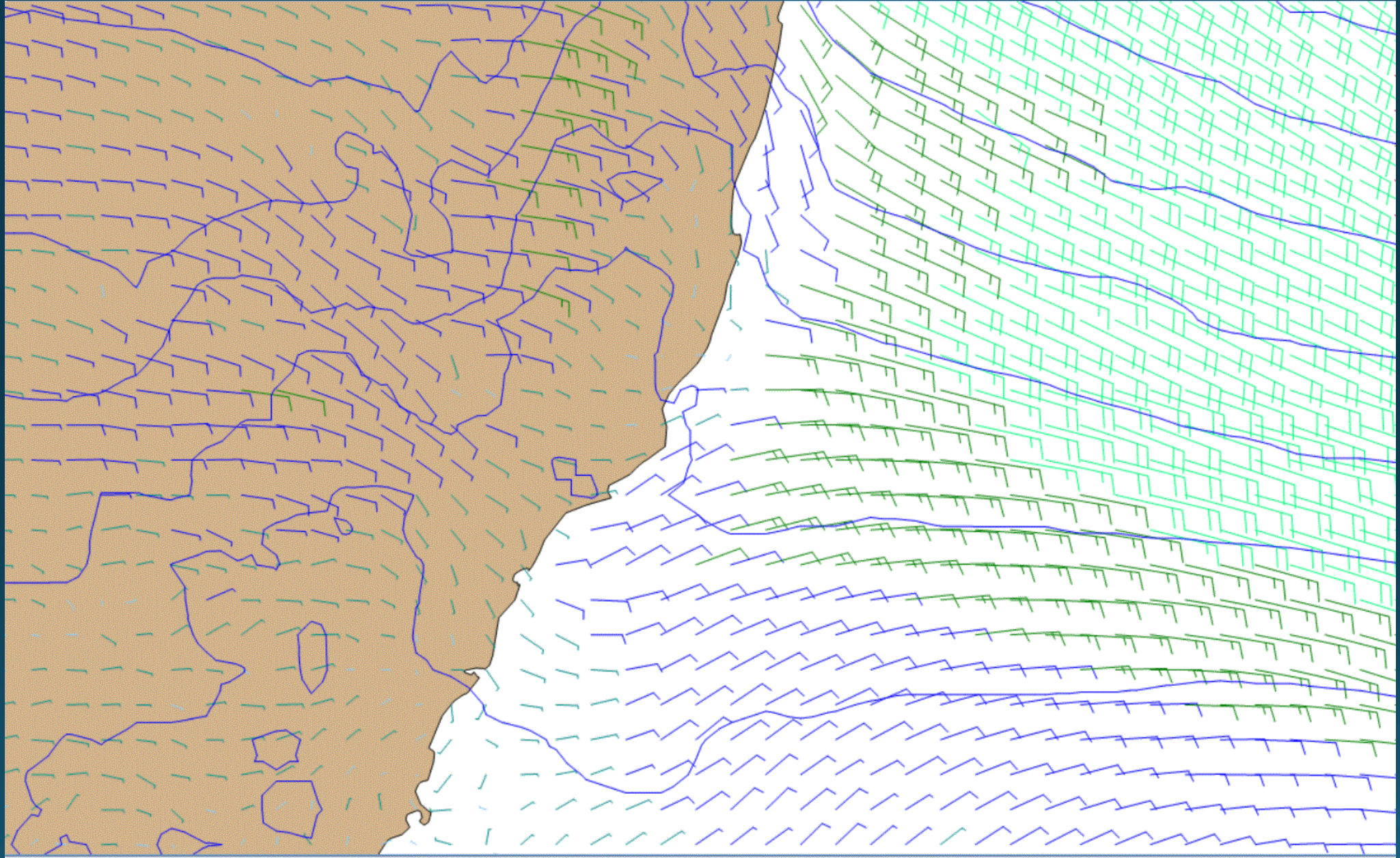
WAVES.

1.8m ENE swell and 1m wind waves

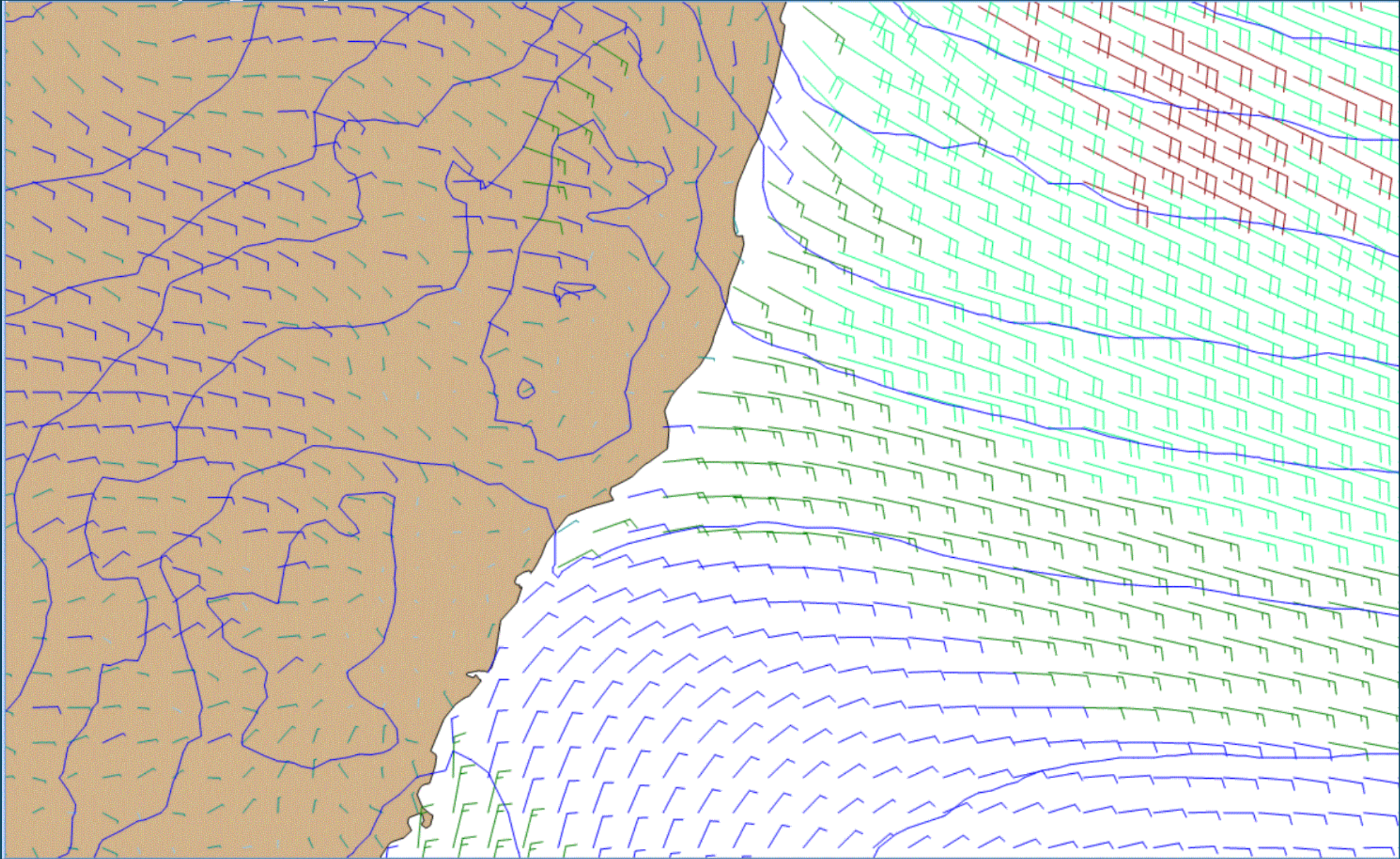
WEATHER.

Few showers decreasing in the afternoon/night

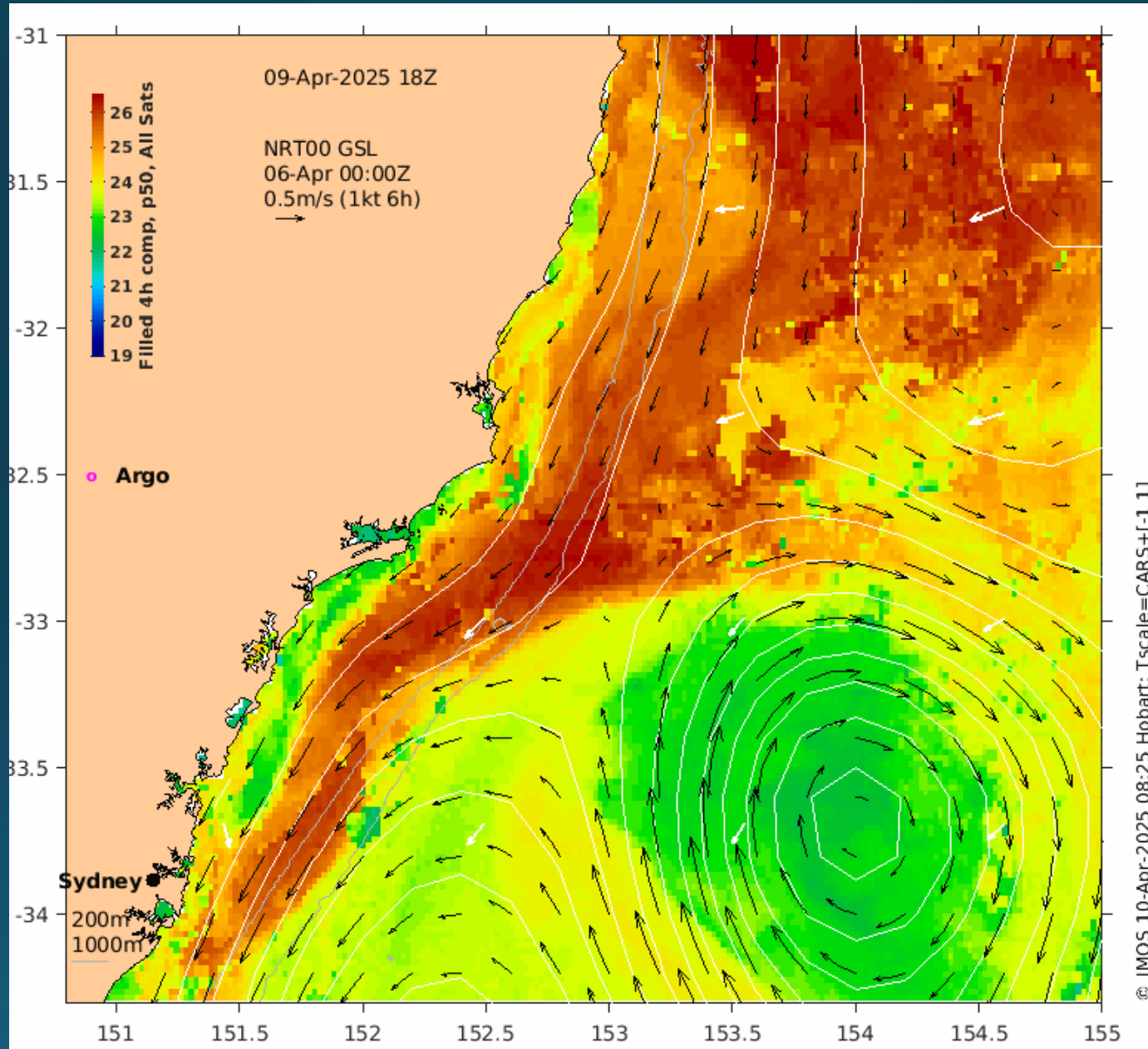
• Sunday 13th April – 1000hrs



• Sunday 13th April – 2200hrs



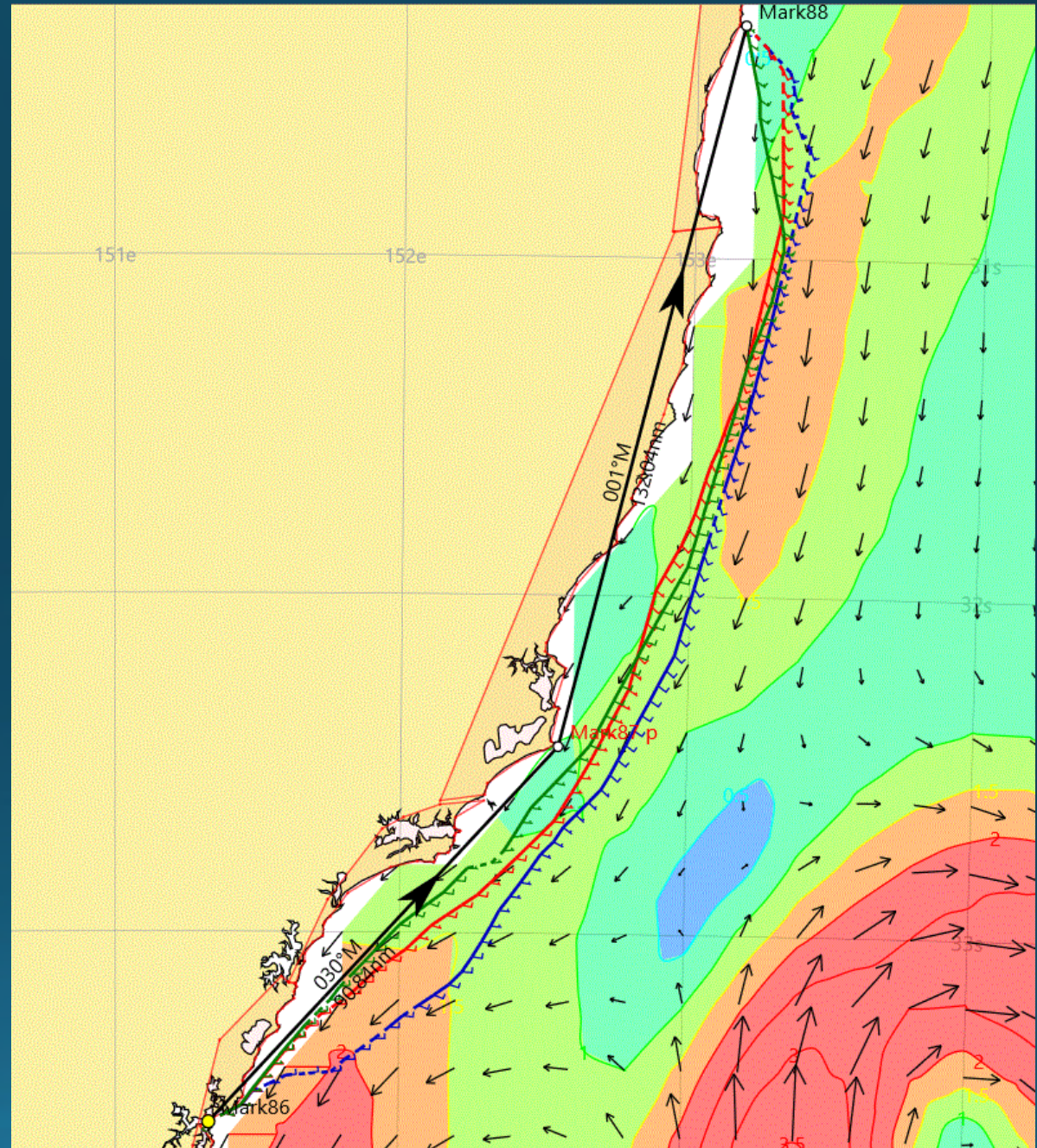
Csiro Current – 09/04/25 – 1800hrs



P2C Routing – Current

CURRENT

S set runs down the NSW coast; it is strongest outside the shelf running to SSW direction at 1 to 2 knots. Inside the shelf, there is less current also moving to the SSW. It will be important to know how the current varies inside and outside when trying to weave a path for best wind!



Tracking Links

- Scan the codes

Public Race Player



Low Bandwidth Links



PITTWATER TO
COFFS HARBOUR
YACHT RACE



38th Pittwater to Coffs Harbour Yacht Race

Questions?