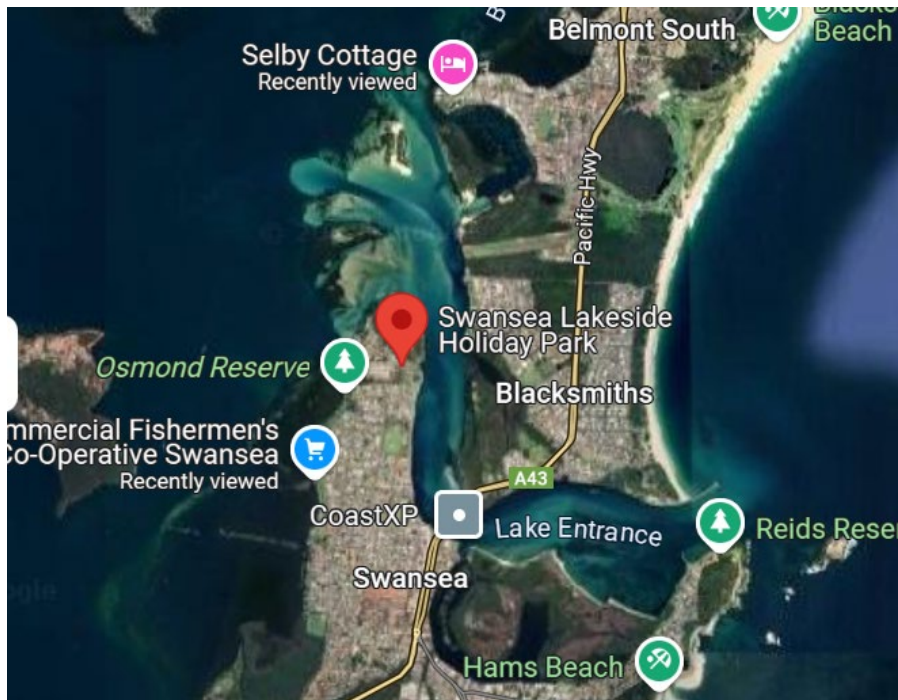
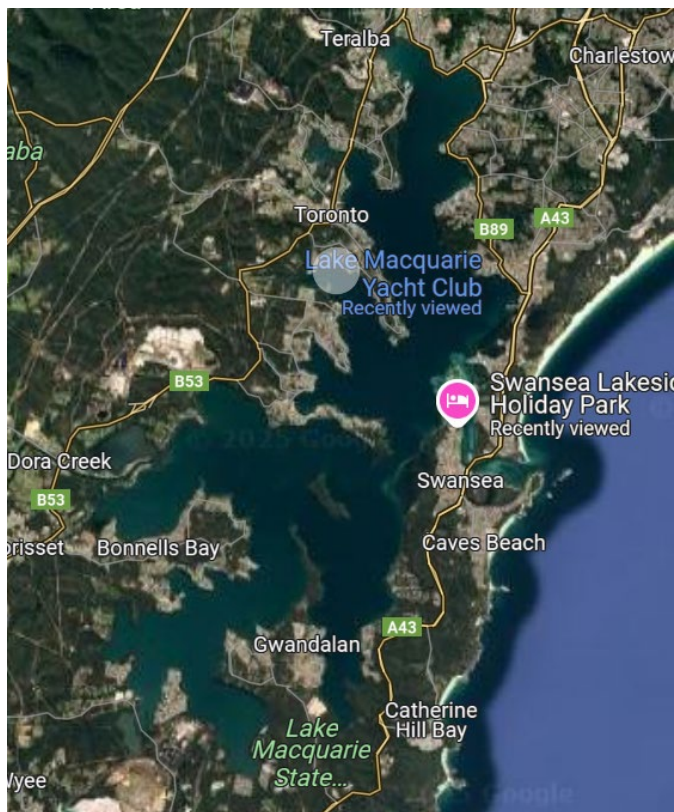


# MAP OF THE SWANSEA CHANNEL INTO THE LAKE – (CLICK ON IMAGES TO ENLARGE)



# MAP OF THE WHOLE LAKE



# Swimming



SWANSEA BAY BEACH – JUST SOUTH OF THE SWANSEA CHANNEL - ANCHOR OFF THE SAND BANK AND WADE IN THE SHALLOWS – SEE CARAVAN PARK IN THE BACKGROUND



TENDER OVER FROM SWANSEA BAY ANCHORAGE TO NARU BEACH RESERVE FOR A SWIM

OR GO FOR A SWIM IN AN ENCLOSED POOL AT BELMONT NEAR THE LAKE MACQUARIE YACHT CLUB



*BELMONT BATHS NEXT TO LAKE MACQUARIE YACHT CLUB – SEE PHOTOS OF PICNIC AREA AND AMENITIES BLOCK BELOW*





# LAKE MACQUARIE YACHT CLUB



*LAKE MACQUAIRE YACHT CLUB – 100 METRES FROM POOL PHOTOS AT BELMONT POOL - SEE MENU BELOW – THE LINK TO*

*THE MENU IS AT THIS LINK - CLICK ON TO VIEW [20241230-CrusoesMenu\\_V1.pdf](#)*

## FRESH SEAFOOD AT FISHERMANS CO-OP



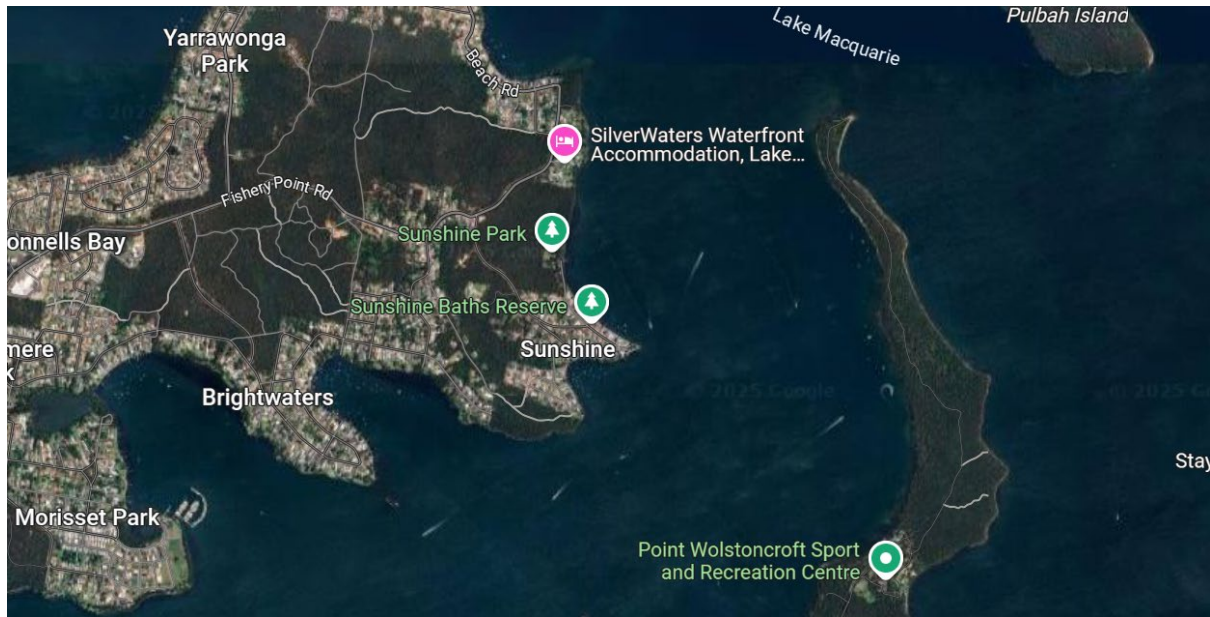
*A LITTLE TO THE SOUTH OF SWANSEA BAY BEACH – COMMERCIAL FISHERMANS CO-OPERATIVE -BOTTOM RIGHT ACCESSIBLE BY TENDER – SEE CLOSE UP BELOW*



CLOSE UP OF ACCESS TO COMMERCIAL FISHERMANS CO-OP



# SOUTHERN END OF THE LAKE



TRINITY POINT MARINA AT BOTTOM LEFT - NEXT TO THE WORDS "MORISSET PART"



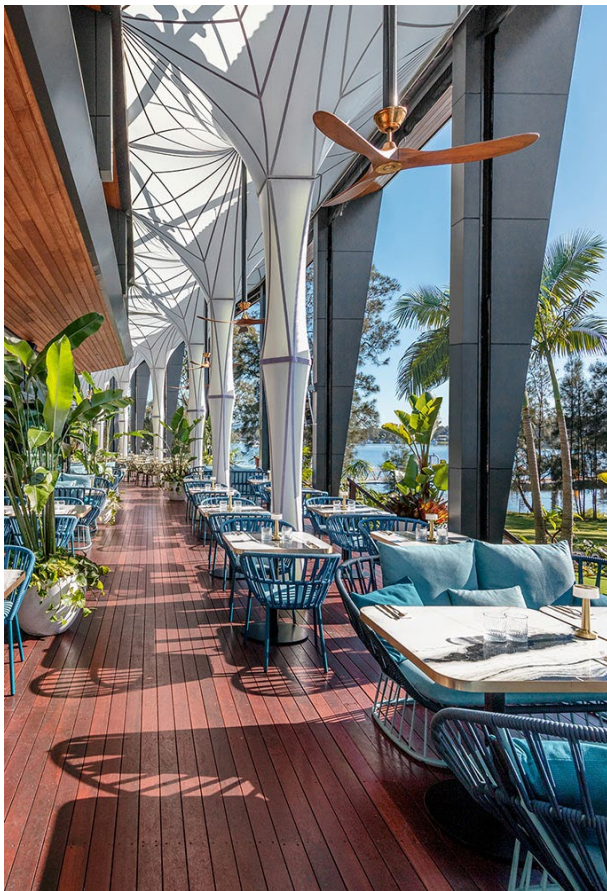
TRINITY POINT MARINA – SEE RESTAURANT NEAR ENTRANCE TO MARINA



TRINITY POINT MARINA AND RESTAURANT

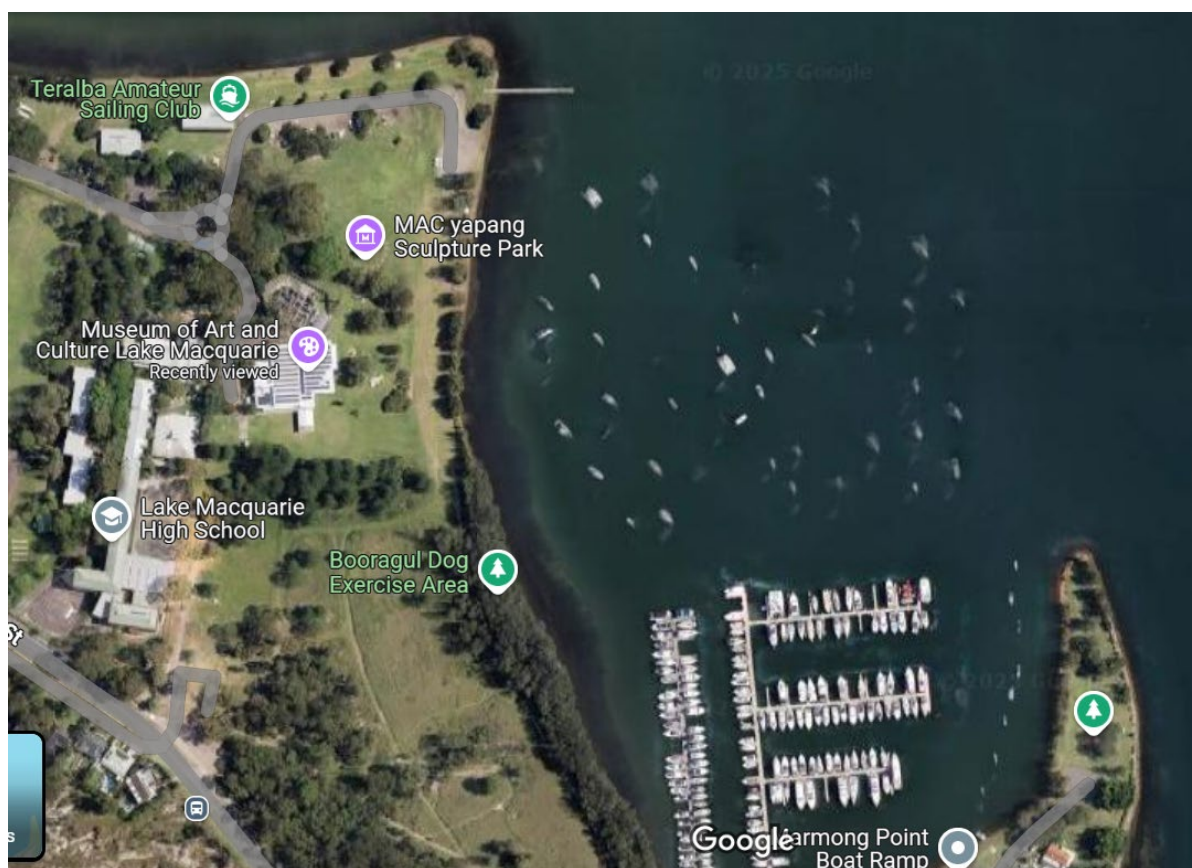


GROUNDS OF TRINITY POINT MARINA RESTAURANT



TRINITY POINT MARINA RESTAURANT – [LINK TO MENU AND PRICES](#) Lunch & Dinner Menu at Lake Macquarie | 8 at Trinity

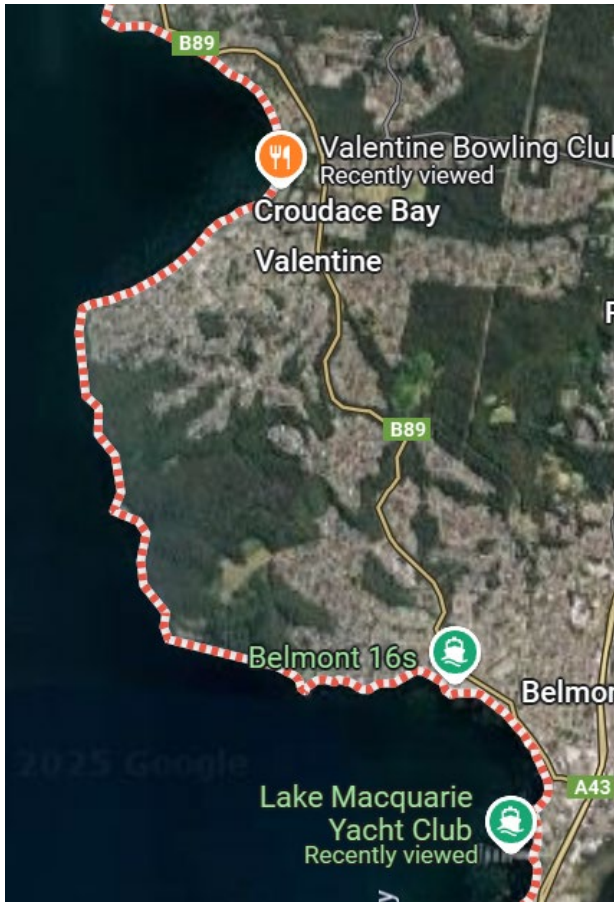
## NORTHERN END OF THE LAKE – A BIT OF CULTURE AT THE ART GALLERY – MARMONG POINT (AND SHELTERED FUEL WHARF AT THE MARINA)





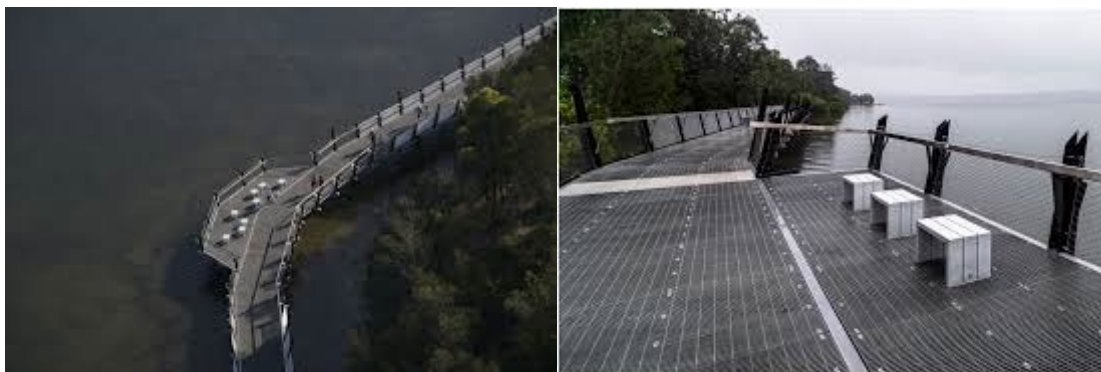
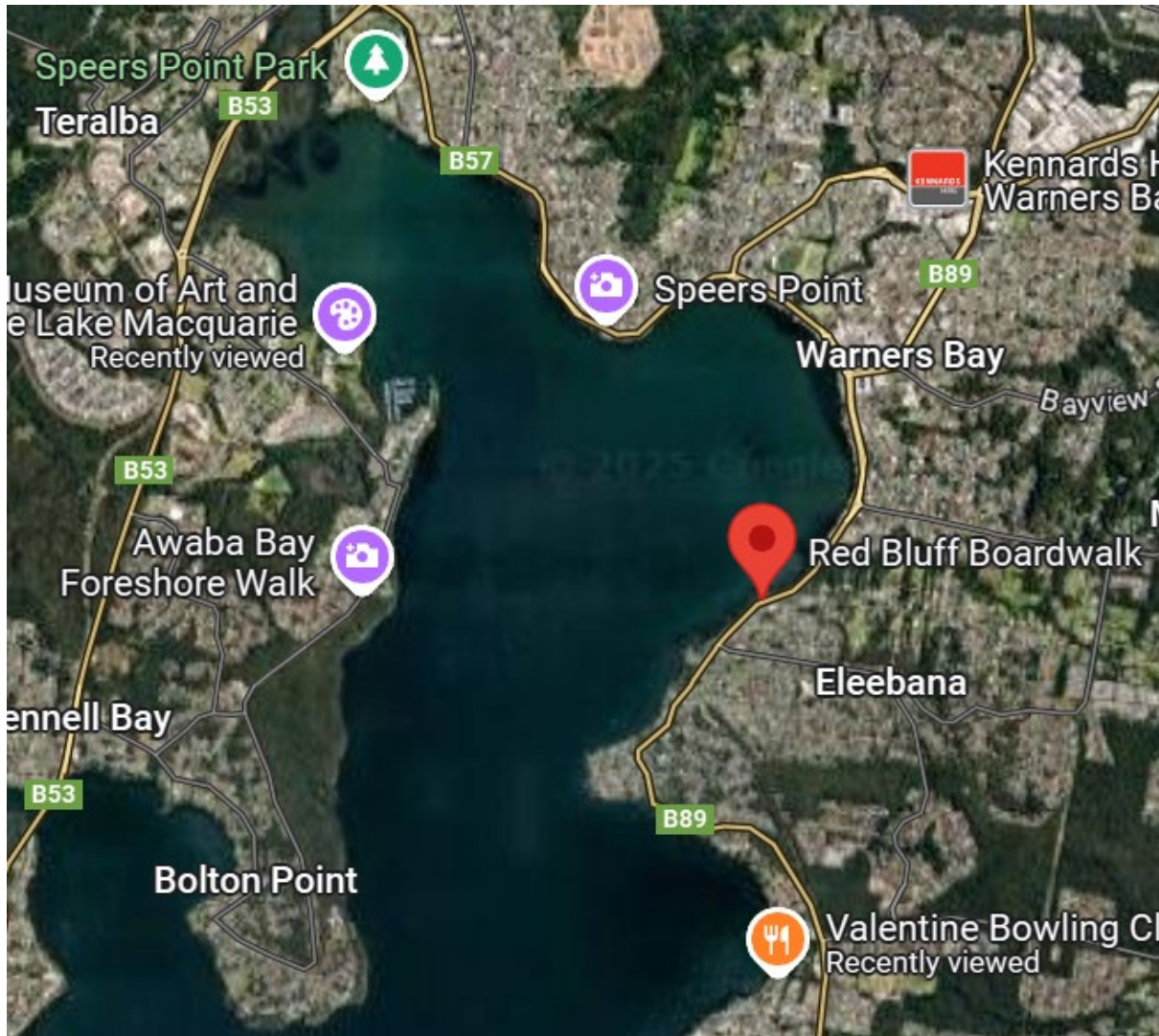
THE MUSEUM OF CULTURE AND ART

**CROUDACE BAY - TIE UP AT THE PUBLIC JETTY AND HAVE LUNCH AT THE VALENTINE BOWLING CLUB**





**RED BLUFF BOARDWALK – 2-3 hour walk** - this could be a good walk either from the Art Gallery to the Valentine Bowling Club or vice versa.





From a local article - "Experience the natural beauty of Lake Macquarie on the 8.5 km shared path linking the Art Gallery at Booragul to Eleebana Lions Park. This picturesque route runs along the lake's edge, offering stunning views and a safe, traffic-free environment suitable for all ages and abilities.

Starting from the Museum of Art and Culture at Booragul, accessible via Booragul train station, the path winds through the lush Speers Point Park, past the vibrant Warners Bay foreshore with its charming cafes, and across the spectacular 380 metre long Redbluff Boardwalk, which illuminates beautifully at night as it stretches over the water.

This path connects to the Speers Point to Glendale shared path at Speers Point Park."

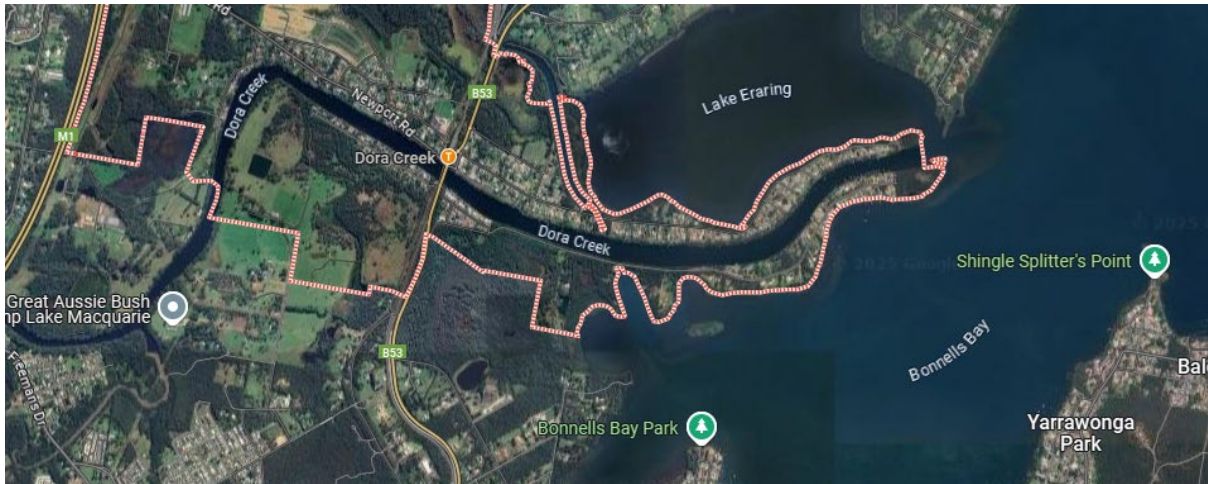
**RE-SUPPLIES** – EASY RESUPPLIES AT WOOLWORTHS IF NEEDED ARE AVAILABLE IN TORONTO. IT HAS A VERY TENDER FRIENDLY PUBLIC WHARF WITH RUBBER PANELS



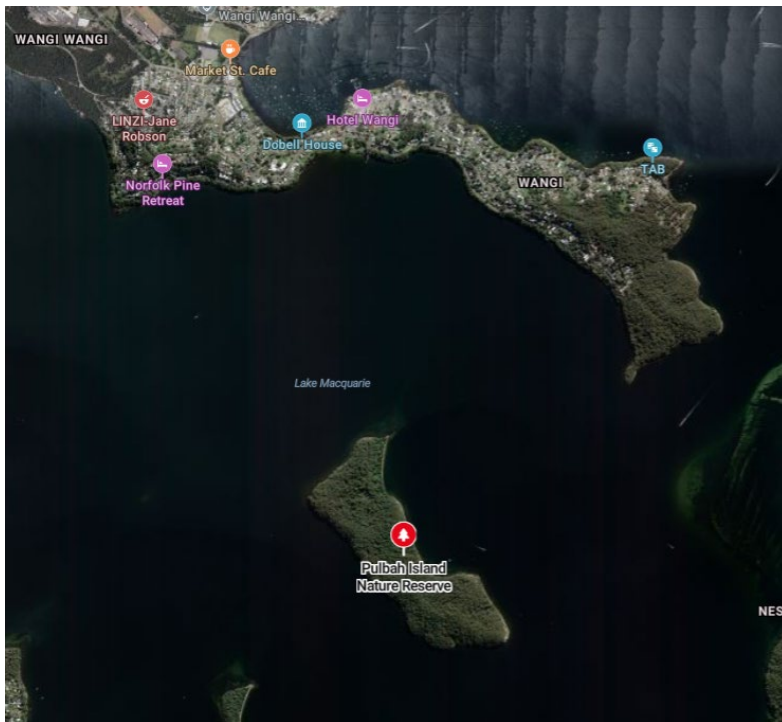


# OFF THE BEATEN TRACK

DORA CREEK - THIS CREEK GOES ALL THE WAY TO AND UNDER THE FREEWAY – IT TURNS INTO REAL DELIVERANCE COUNTRY NEAR THE EXPRESSWAY – WE KAYAKED TO THE END AND IF WE WEREN'T IN NSW I WOULD HAVE EXPECTED TO SEE A CROCODILE OR TWO. NOTE PROXIMITY TO SHINGLE SPLITTERS



**PULBAH ISLAND – this island has three moorings on the north side near the icon on the map and decent holding**



**MAKE SURE YOU TAKE RUBBER SANDALS OR SHOES THAT YOU DON'T MIND GETTING WET AS THE LAKE HAS RAZOR FISH THAT YOU NEED TO PROTECT YOUR FEET FROM – SEE BELOW**

Pulbah Island in Lake Macquarie - Bushwalk on the Island

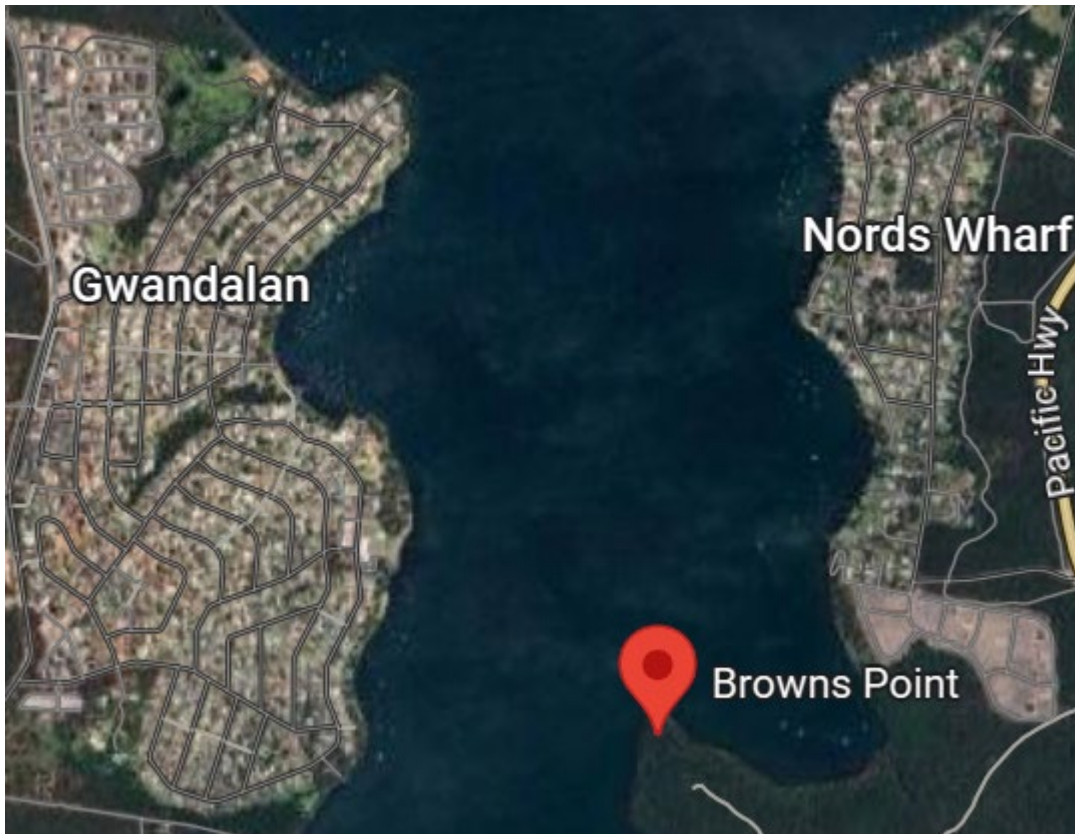


UNDERWATER SHOT OF A RAZOR FISH



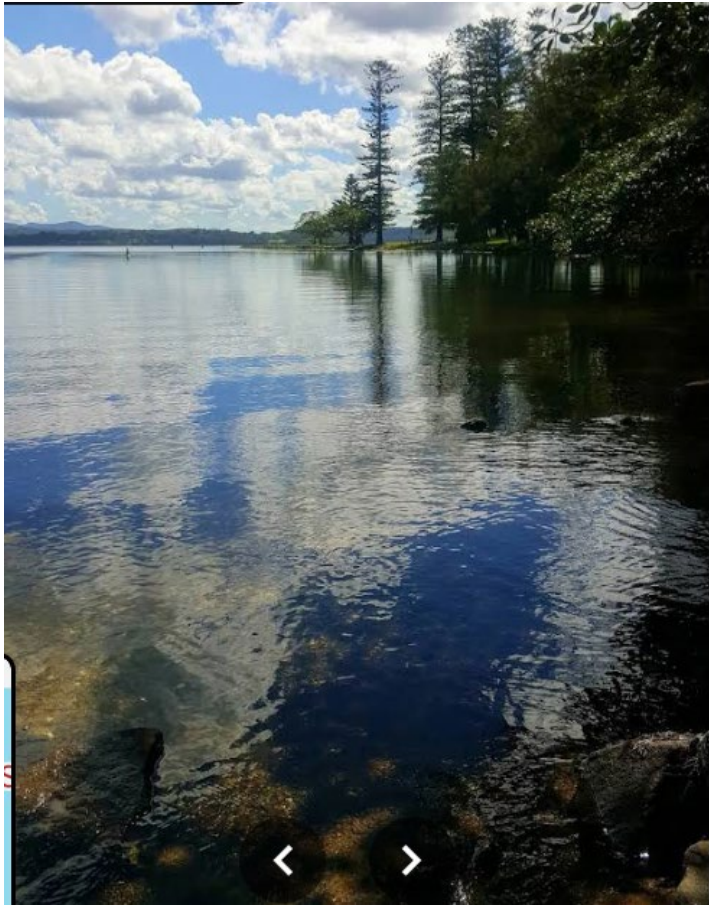
RAZOR FISH OUT OF THE WATER

BROWNS POINT – THIS TRANQUIL SHELTERED BAY FEATURES AUDITORY IMMERSION IN THE SOUND OF BELLBIRDS. IT HAS THREE MOORINGS AND PLENTY OF ANCORAGE SPACE.



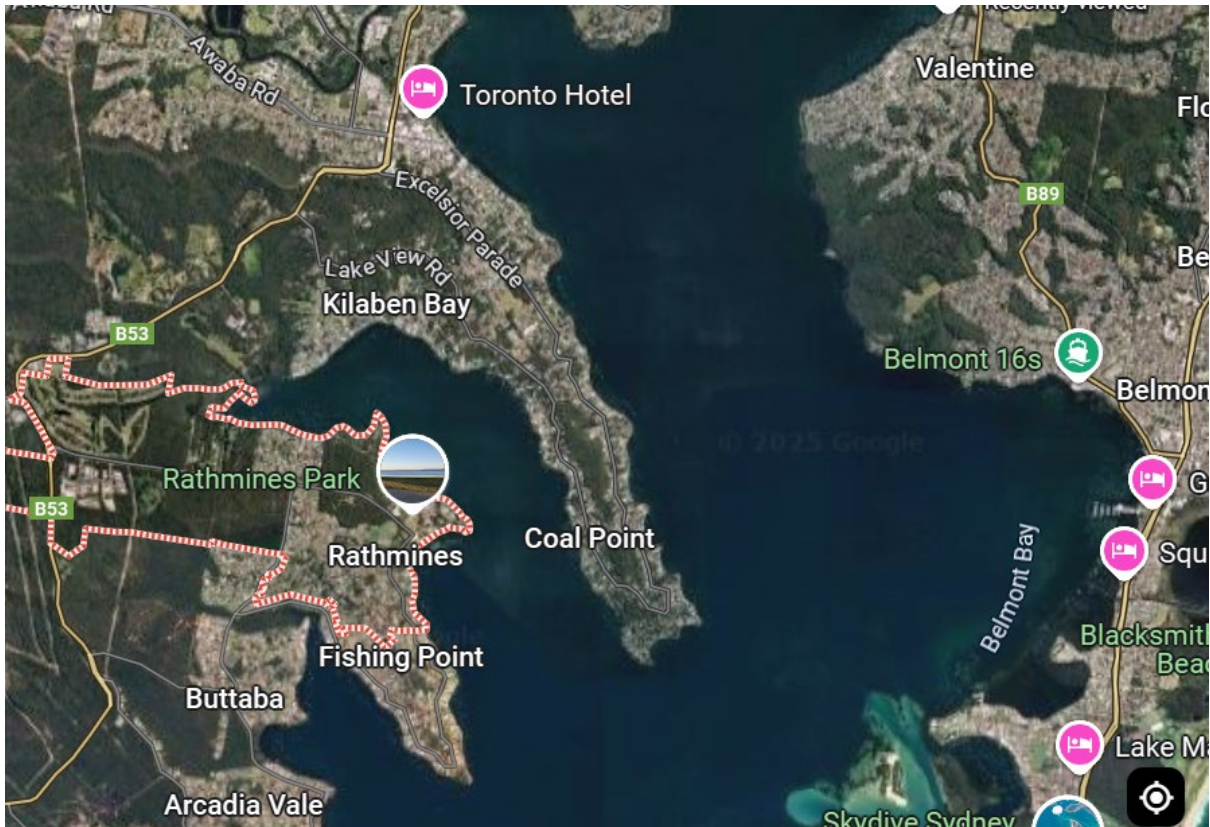
**SHINGLE SPLITTERS – NOTE DORA CREEK ENTRANCE  
AT TOP LEFT**



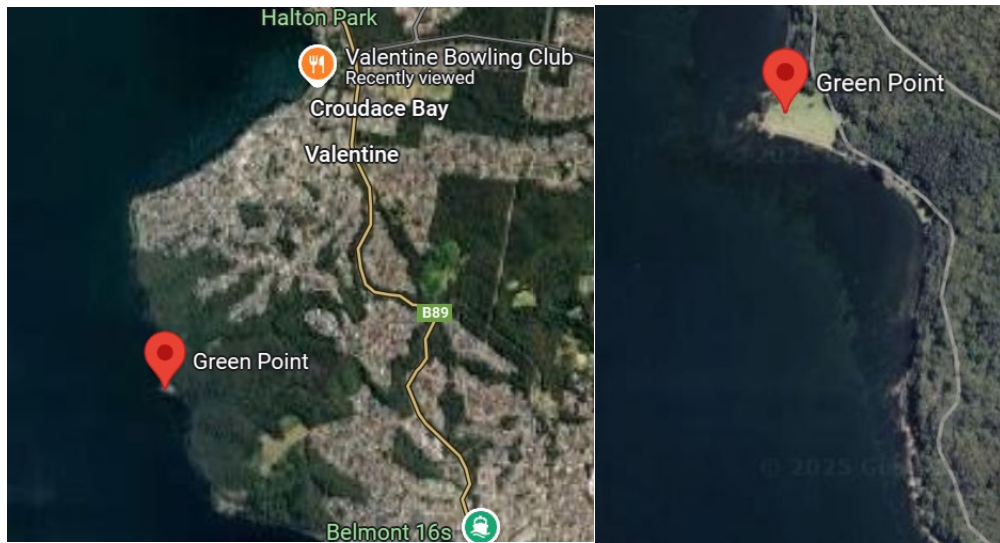


This is one of my favourite spots with great memories of games of cricket between the men and the ladies, games of Finkster and target venue for use of our volleyball net. It is a spit with water on both sides. This photo is looking east and the previous photo was on the western side for anchoring. From the shore it is only 50 metres to this site with BBQ and toilets.

**RATHMINES** – This has traditionally been the first anchorage on arrival at the lake. This year we will try and do something different, but it is still a good backstop. It has a nice jetty with soft sides and water supply to top up water tanks. It also has a very large park for sundowners and other activities. There is usually a walk embarked upon to Toronto from this anchorage from the Kilaben Bay side of the bay. It is a very popular spot however and can get quite crowded.



GREEN POINT – THIS IS VERY SHELTERED FROM A STRONG NORTH EASTER AND HAS 3 PUBLIC MOORINGS AND GOOD ANCHORING. AS YOU CAN SEE IT ALSO HAS WALKING TRACKS

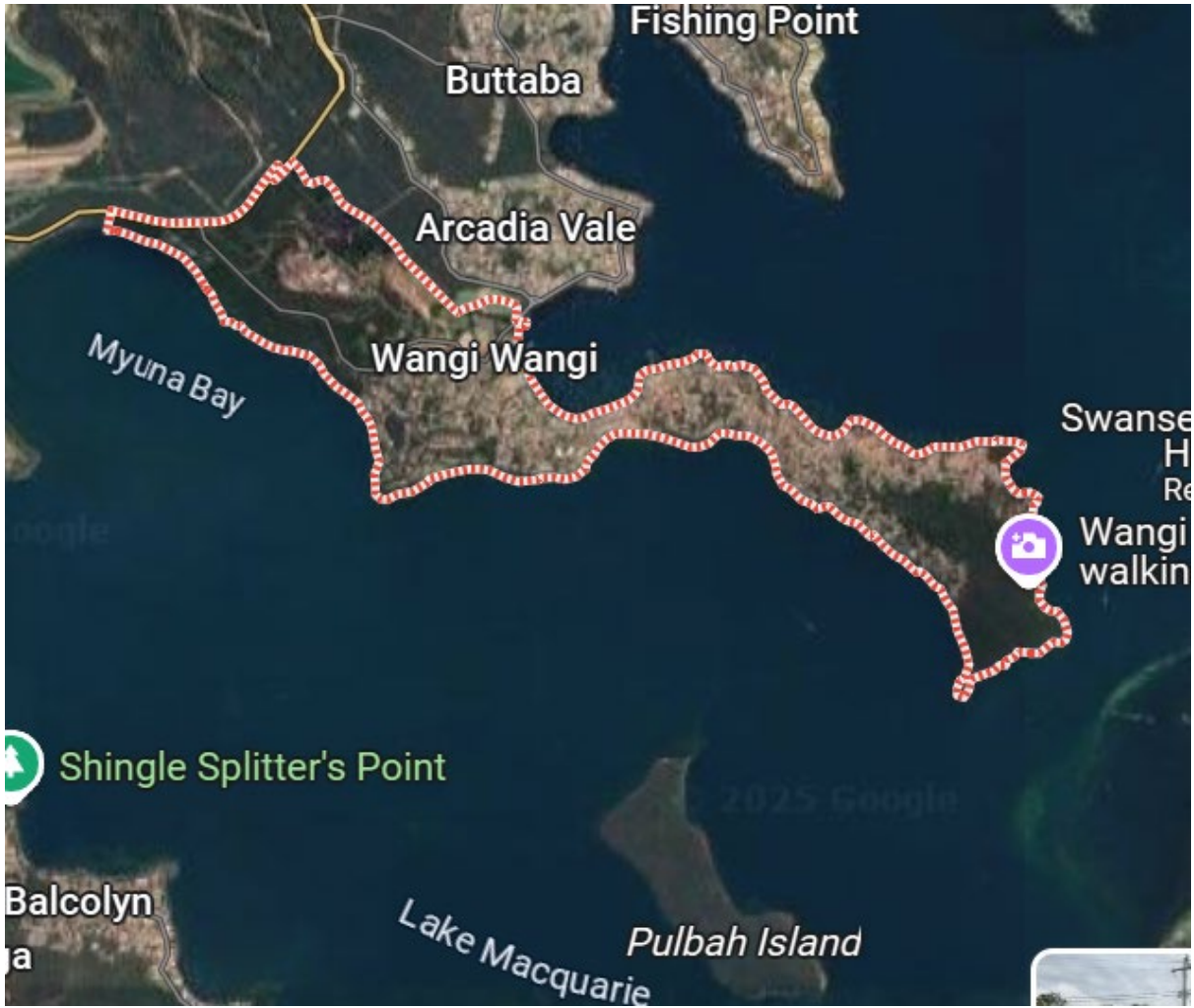






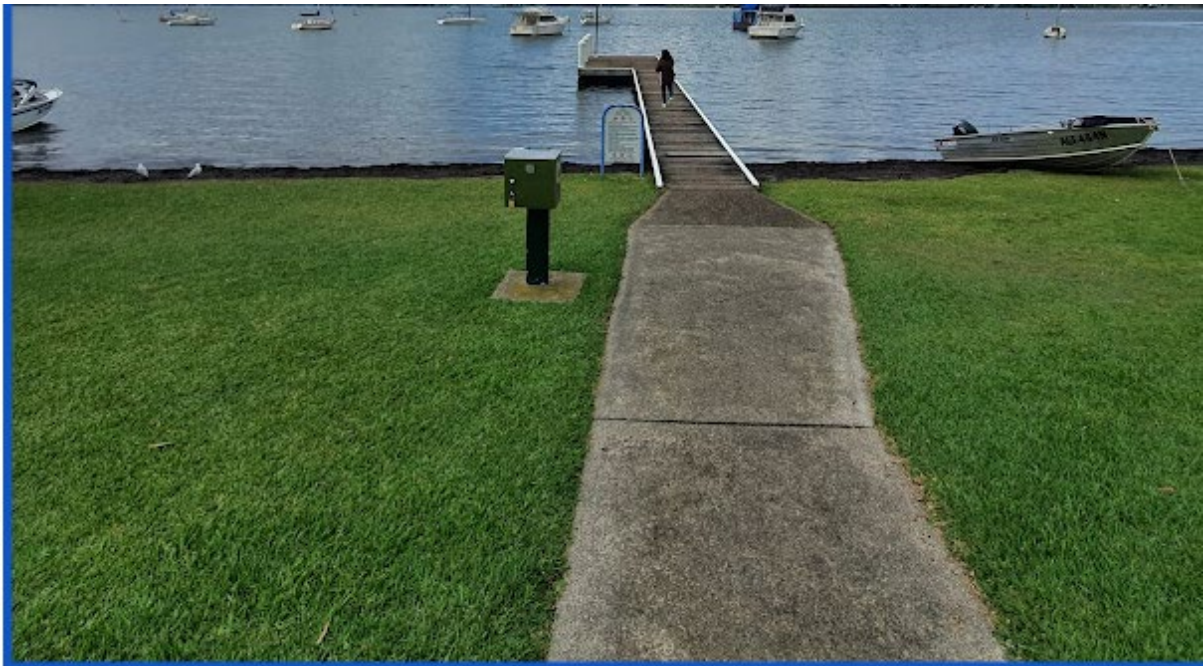


WANGI WANGI – THIS IS ON A SPIT TOO. IT IS GREAT BECAUSE ONE CAN EASILY WALK FROM ONE SIDE TO THE OTHER. IT HAS AN IGA, A PUB AND CAFES AS WELL AS THE WANGI WORKERS CLUB AND WANGI RSL.





Wangi RSL and jetty on northern side



Jetty and Park on the Southern – Pulbah Island side – the township is only a couple of minutes away.