



# 2025 Super 40 Series Act 1

## SAILING INSTRUCTIONS

- 1 **RULES** – see NoR 1 & C1
- 2 **ELIGIBILITY** – see NoR C3
- 3 **SCHEDULE** – see NoR 7 & C4 and amended by SI 14
- 4 **MEASUREMENT & EQUIPMENT INSPECTION** – see NoR 8
- 5 **PENALTY SYSTEM** – see NoR 9
- 6 **SCORING** – see C6
- 7 **TROPHIES & PRIZES** – see C7
- 8 **BERTHING** – see NoR 11
- 9 **HAUL-OUT RESTRICTIONS, DIVING EQUIPMENT & PLASTIC POOLS** – see NoR 13 & 14
- 10 **RISK STATEMENT** – see NoR 15

### 11 CHANGES TO SAILING INSTRUCTIONS

- 11.1 Changes to the schedule will be posted by 2000 on the day before they will take effect. Other changes will be posted before 0900hrs on the day they take effect.
- 11.2 Changes to the Sailing Instructions made afloat will be indicated by the display of Code Flag 3rd Substitute accompanied by two sound signals. This may be communicated orally.

### 12 SIGNALS MADE ASHORE

- 12.1 Signals made ashore will be displayed on the official flagstaff at the club.
- 12.2 The Warning Signal will not be made less than 60 minutes after “AP” is lowered ashore. This changes RRS Race Signals “AP”.

### 13 AREAS THAT RANK AS OBSTRUCTIONS

- 13.1 While racing in Pittwater, boats shall not sail within the area of water between registered moorings (including Police or NSW Maritime moorings) and the adjacent shoreline inside Pittwater. These areas rank as obstructions.

### 14 SCHEDULED STARTING TIMES & VHF COMMUNICATIONS

Day/Date	Race Format	Event	Time	VHF Ch.
Sat 8 February	Broken Bay 5 Heads Race	Warning Signal	1155hrs	VHF Ch.77
Sun 9 February	Up to 2 W/L races followed by 1 Passage Race	First Warning Signal	1125hrs	VHF Ch.71

- 14.1 On the final day of the regatta no Warning Signal will be made after 1600hrs.

### 15 CLASS FLAGS

- 15.1 The Class flag shall be: Numeral Pennant 4

### 16 TIME LIMIT

- 16.1 The Time Limit for the Broken Bay 5 Heads Race on Saturday 8<sup>th</sup> February is 1700hrs.
- 16.2 The Time Limit for each Windward/Leeward Race is 60 minutes.
- 16.3 The Time Limit for the Passage Race 120 minutes.
- 16.4 Boats failing to finish within the Time Limit shall be scored TLE. Boats scoring TLE shall score points 1 more than the number of boats to complete the course and finish in accordance with RRS28. Changes RRS 35, A4 & A5

### 17 PROTESTS AND REQUESTS FOR REDRESS

- 17.1 The protest time limit is 90 minutes after the last boat finishes in the last race of that day.
- 17.2 Notices will be posted no later than 20 minutes after the protest time limit informing competitors of hearings in which they are parties or named as witnesses.



- 17.3 The penalty, if any, for any infringement of the rules other than RRS Part 2 is at the sole discretion of the Protest Committee and may be other than disqualification. This changes RRS 63.5.
- 17.4 On the last day of the regatta a request for reopening a hearing or redress shall be delivered no later than 30 minutes after the decision was posted. Changes RRS 61.2(a).

## **SAILING INSTRUCTIONS – APPENDIX BROKEN BAY 5 HEADS RACE**

### **18 COMMUNICATION**

- 18.1 VHF Ch.77 will be used for communication for the Broken Bay 5 Heads Race.

### **19 COURSE AREA**

- 19.1 Course Area A: Pittwater and Broken Bay

### **20 PASSAGE RACE COURSE 1 (Saturday 8<sup>th</sup> February)**

- 20.1 The Course for the Broken Bay Five Heads Race:

<b>COURSE ID</b>	<b>Course</b>
<b>COURSE A</b>	<b>START – WHL (pass P) – PH (P) – CH (P) – BXH (S) – BJH (pass P) – FINISH</b>
<b>COURSE B</b>	<b>START – BJH (pass S) – BXH (P) – CH (S) – PH (S) – WHL (pass S) – FINISH</b>

- 20.2 The Course to be sailed will be displayed from the Committee Vessel no later than the First Warning Signal.

### **21 MARKS**

- 21.1 Mark descriptions:

<b>CODE</b>	<b>NAME</b>	<b>DESCRIPTION</b>	<b>Approximate Position</b>
<b>BJH</b>	Barrenjoey Headland	Eastern <b>Headland</b> at the entrance to Pittwater	
<b>BXH</b>	Box Head	Yellow Inflatable Mark, positioned east of Lion Island at approximately:	33° 33.3' S, 151° 20.4' E
<b>CH</b>	Challenger Head	Yellow Inflatable Mark, positioned approximately 200m north of Challenger Head	33° 35.13' S, 151° 15.05' E
<b>PH</b>	Pacific Head	Yellow Inflatable Mark, positioned approximately 0.2nm east of Pacific Head	33° 33.7' S, 151° 16.5' E
<b>WHL</b>	West Head Land	Western <b>Headland</b> at the entrance to Pittwater	

### **22 START & FINISHING LINE (Broken Bay 5 Heads Race)**

- 22.1 The Starting area will be south of Longnose Point.
- 22.2 The race committee will announce on VHF Ch. 77 the approximate position of the finishing line.
- 22.3 The starting and finishing line shall be between a staff displaying, an orange flag at the start and a blue flag at the finish, on the Race Committee Boat and a **Red** inflatable mark at the other end of the line.
- 22.4 The finishing vessel may be different to the starting vessel.



## SAILING INSTRUCTIONS – APPENDIX W/L RACES & PASSAGE RACE

### 23 COMMUNICATION

23.1 VHF Ch.71 will be used for communication for the races on Sunday 9<sup>th</sup> February 2025.

### 24 COURSE AREA

24.1 Course Area will be the waters of Pittwater.

### 25 MARKS, STARTING/FINISHING LINE

25.1 Mark 1 and the Gate marks shall be **pink** inflatable marks.

25.2 Mark 1a, the offset mark shall be a **blue** inflatable mark.

25.3 The “Change Mark” shall be a **orange** inflatable mark. When, in a subsequent change a new mark is replaced, it shall be by the original mark.

25.4 The starting and finishing lines shall be between a staff displaying, an orange flag at the start and a blue flag at the finish, on the Race Committee Boat and a **black** and **white** checked inflatable mark.

25.5 The finishing vessel may be different to the starting vessel.

### 26 COURSES

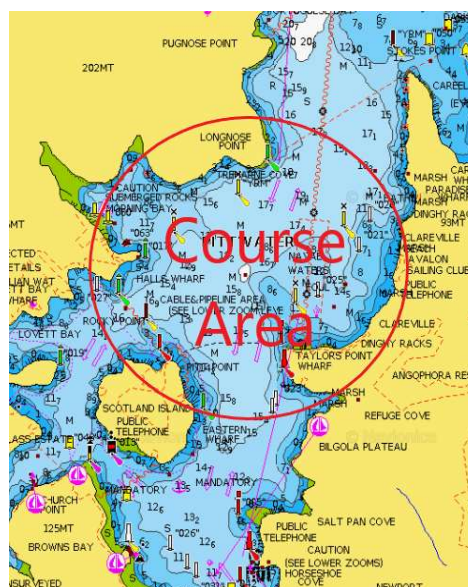
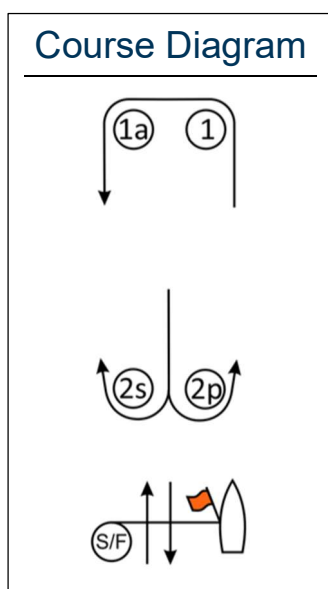
26.1 The course, compass bearing and approximate distance to Mark 1 shall be displayed by the Race Committee Boat.

26.2 Marks 1 and 1a shall be rounded to port. Mark 1a is an offset mark.

26.3 If one Gate mark is missing, boats shall round the existing mark to port.

26.4 Description of the courses:

Code	Courses
C2	Course 2: Start - 1 - 1a – Finish
C4	Course 4: Start - 1 - 1a – 2s/2p - 1 - 1a – Finish
C6	Course 6: Start - 1 - 1a – 2s/2p - 1 - 1a – 2s/2p - 1 - 1a – Finish



### 27 FINAL PASSAGE RACE COURSE (Sunday 9<sup>th</sup> February)

27.1 The course to be sailed shall be published on the morning of the race (Sunday 9<sup>th</sup> February) by 0930hrs as a Notice to Competitors.