





## SAILING INSTRUCTIONS – APPENDIX B OFFSHORE COURSES

### 21 COURSE AREA

21.1 Course Area B: Terrigal (North), Long Reef (South) and approximately 8nm East from BJ.

### 22 MARKS

22.1 Marks and Mark descriptions:

| CODE | NAME             | DESCRIPTION  | Approximate Position                    |
|------|------------------|--|---|
| 04   | 4 Nautical Mile  | Orange Inflatable mark laid approximately 4NM to seaward from the Start Line                       | Bearing announced by the Race Committee |
| 08   | 8 Nautical Mile  | Orange Inflatable mark laid approximately 8NM to seaward from the Start Line                       | Bearing announced by the Race Committee |
| 1PT  | First Point      | Orange Inflatable mark laid approximately at;  | 33° 29.6' S, 151° 29.2' E               |
| 2PT  | Second Point     | Orange Inflatable mark laid approximately at;  | 33° 30.8' S, 151° 27.6' E               |
| BXH  | Box Head         | Orange Inflatable mark laid east of Lion Island, at approximately;                                 | 33° 33.3' S, 151° 20.4' E               |
| BJ   | Barrenjoey       | Orange Inflatable mark laid in the vicinity of Barrenjoey Head, at approximately;                  | 33° 33.9' S, 151° 20.4' E               |
| ESM  | Eastern Sea Mark | Orange Inflatable mark laid approximately 7.2NM east of Barrenjoey Lighthouse, at approximately;   | 33° 37.0' S, 151° 29.0' E               |
| FS   | Flint & Steel    | Orange Inflatable mark laid northeast of Flint & Steel Point, at approximately;                    | 33° 34.1' S, 151° 17.4' E               |
| J    | Juno             | Fixed Yacht Mark, positioned around 100m east of Juno Point, at approximately;                     | 33° 34.0' S, 151° 15.9' E               |
| LI   | Lion Island      | Lion Island situated between West Head and Box Head  |   |
| LR   | Long Reef        | Orange Inflatable mark laid approximately 10NM southeast of Barrenjoey Headland, at approximately; | 33° 45.0' S, 151° 22.0' E               |
| MR   | Maitland Reef    | Orange Inflatable mark laid approximately 0.7NM east of Maitland Reef, at approximately;           | 33° 32.1' S, 151° 24.4' E               |
| NR   | Newport Reef     | Orange Inflatable mark laid approximately 1.0NM east of Newport Reef, at approximately;            | 33° 40.0' S, 151° 21.0' E               |
| P    | Patonga          | Orange Inflatable mark laid south of Eastern Point or Brisk Bay, at approximately;                 | 33° 33.4' S, 151° 16.7' E               |
| PB   | Palm Beach       | Orange Inflatable mark laid approximately at;  | 33° 35.7' S, 151° 20.5' E               |
| TGL  | Terrigal         | Orange Inflatable mark laid approximately at;  | 33° 27.6' S, 151° 30.0' E               |

### 23 START & FINISHING LINE

23.1 The Starting area may be in the vicinity of Barrenjoey Mark. The Race Committee shall announce the position approximately 30 minutes before the start.

23.2 The Race Committee will announce on VHF Ch. 72 the approximate position of the finishing line.

23.3 The starting and finishing lines shall be between a staff displaying, an orange flag at the start and a blue flag at the finish, on the Race Committee Boat and a **black and white** checked inflatable mark laid nearby.

23.4 The finishing vessel may be different to the starting vessel.

### 24 COURSE

24.1 The course to be sailed shall be published on the morning of the race as a Notice to Competitors no later than 1000hrs.



## SAILING INSTRUCTIONS – APPENDIX A INSHORE COURSES

### 25 COURSE AREA

25.1 Course Area A: Pittwater and Broken Bay

### 26 MARKS

26.1 Marks and Mark descriptions:

| CODE | NAME                | DESCRIPTION   | Approximate Position                     |
|------|---------------------|---|--|
| AV   | Avalon (Clareville) | Fixed Yacht Mark, positioned northwest of Avalon Sailing Club at approximately;                             | 33° 37.6' S, 151° 18.6' E                |
| CR   | Coasters Retreat    | Yellow Inflatable mark laid approximately 200m southeast of Mackerel Beach Mark                             | 33° 35.85' S, 151° 18.45' E              |
| EB   | Ellis Buoy          | Yellow Inflatable mark laid southwest of the Avalon mark  |  |
| F    | Windward Mark       | Yellow Inflatable mark laid approx. 0.5nm to windward of the start line.                                    | Distance and bearing displayed by the RC |
| ISP  | Inner Stokes Point  | Yellow Inflatable mark laid approximately 100m southwest of Stokes Point fixed yacht mark                   |  |
| LN   | Longnose Point      | Fixed Yacht Mark, positioned southwest of Longnose Point, at approximately;                                 | 33° 37.4' S, 151° 18.0' E                |
| MB   | Mackerel Beach      | Fixed Yacht Mark, positioned between Currawong and Great Mackerel Beach, at approximately;                  | 33° 35.7' S, 151° 18.3' E                |
| RP   | Rocky Point         | Fixed Yacht Mark, positioned northeast of Rocky Point, at approximately;                                    | 33° 37.9' S, 151° 17.4' E                |
| SDP  | Soldiers Point      | Fixed Yacht Mark, pyramid north of Soldiers Point, at approximately;  | 33° 36.0' S, 151° 18.3' E                |
| SP   | Stokes Point        | Fixed Yacht Mark, positioned around 200m northwest of Stokes Point, at approximately;                       | 33° 36.7' S, 151° 18.8' E                |
| SPC  | Salt Pan Cove       | Yellow Inflatable mark laid northwest of Salt Pan Cove Maritime Beacon, towards Scotland Island             |  |
| TB   | Towlers Bay         | Fixed Yacht Mark, positioned around 400m from the shoreline in Morning Bay (Towlers Bay), at approximately; | 33° 37.5' S, 151° 17.6' E                |
| TP   | Taylors Point       | Fixed Yacht Mark, positioned northwest of Taylors Point Wharf, at approximately;                            | 33° 37.9' S, 151° 18.3' E                |
| WP   | Woody Point         | Yellow Inflatable mark laid approximately 100m east of Woody Point.   |  |

### 27 START & FINISHING LINE

27.1 The Starting area for the first race of the day will be announced by the RO. The starting area for the second race shall be announced at the end of the first race.

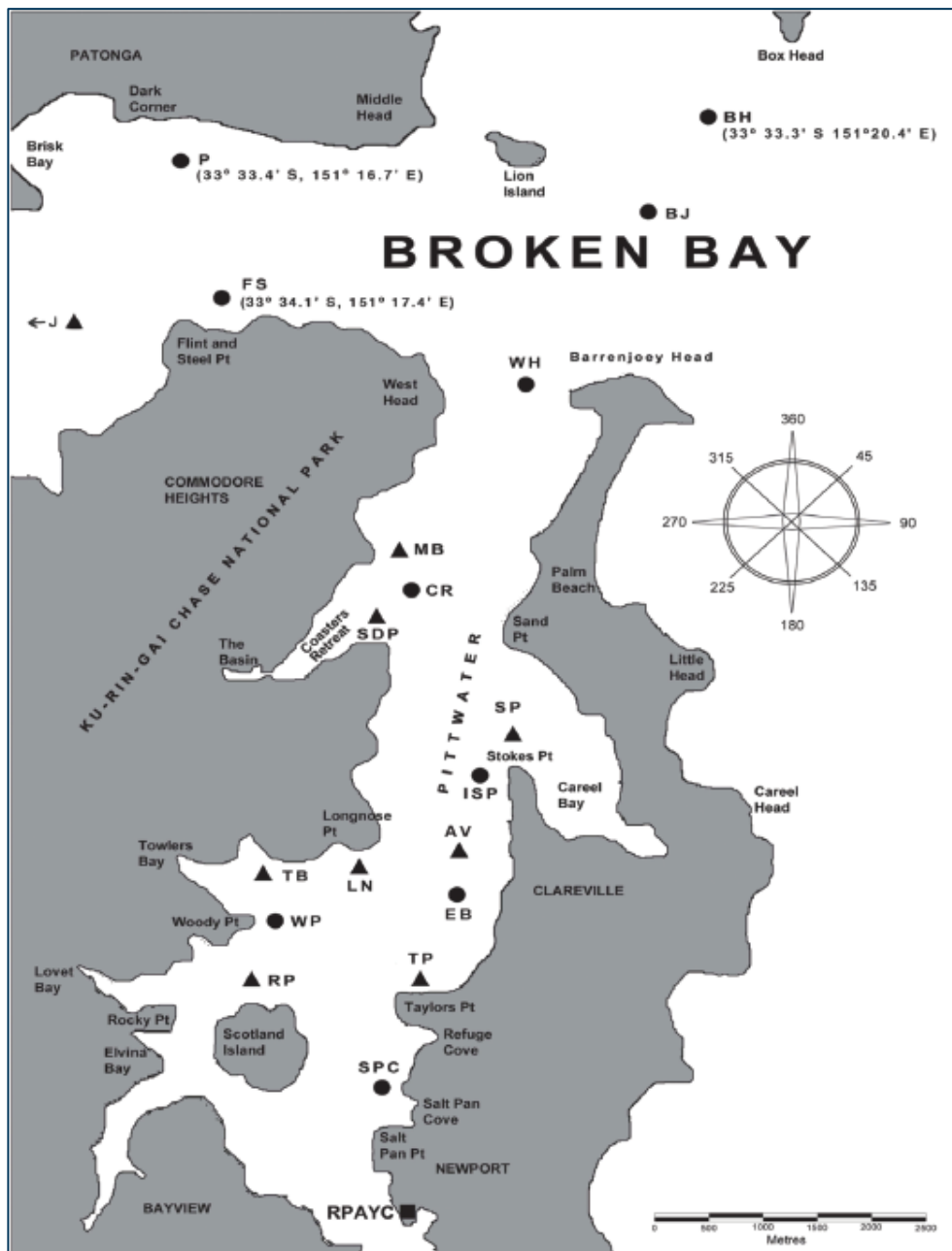
27.2 The race committee will announce on VHF Ch. 72 the approximate position of the finishing line.



- 27.3 The starting and finishing lines shall be between a staff displaying, an orange flag at the start and a blue flag at the finish, on the Race Committee Boat and a **black and white** checked inflatable mark nearby.
- 27.4 The finishing vessel may be different to the starting vessel.

## 28 COURSE

- 28.1 The Course will be selected from the list of courses below:
- 28.2 The course to be sailed shall be announced by the race committee on VHF Ch.72 no later than the Warning Signal for each division and displayed from the Committee Vessel.
- 28.3 Competitors may request repeats of the course without infringing RRS41, or a repeat of any other announcement by the Race Committee.





**COURSE SHEET**

| Course No. | Wind  | Laid Inflatable Mark |        |     | All marks are to be rounded to Starboard unless indicated as Port - (P) |     |        |        |        |        |        |        |    |        | Approx. NM |
|------------|-------|----------------------|--------|-----|---|-----|--------|--------|--------|--------|--------|--------|----|--------|------------|
|            |       | Start                | ISP    | RP  | LN  | TP  | RP     | ISP    | RP     | Finish |        |        |    |        |            |
| 1          | NE/SW | Start                | ISP    | RP  | LN  | TP  | RP     | ISP    | RP     | Finish |        |        |    |        | 9.1        |
| 2          | NE/SW | Start                | ISP    | RP  | ISP   | TP  | RP     | Finish |        |        |        |        |    |        | 7.4        |
| 3          | E     | Start                | EB     | SPC | TB  | EB  | TB     | EB     | SPC    | TB     | EB     | Finish |    |        | 8.0        |
| 4          | E     | Start                | EB     | TB  | EB  | SPC | TB     | EB     | TB     | EB     | Finish |        |    |        | 6.2        |
| 5          | SE/NW | Start                | SPC(P) | CR  | TP  | CR  | SPC    | TB     | Finish |        |        |        |    |        | 9.5        |
| 6          | SE/NW | Start                | SPC(P) | CR  | TP  | TB  | SPC    | TB     | Finish |        |        |        |    |        | 9.2        |
| 7          | S     | Start                | SPC(P) | CR  | SPC   | CR  | Finish |        |        |        |        |        |    |        | 11         |
| 8          | S     | Start                | SPC(P) | CR  | SPC   | LN  | Finish |        |        |        |        |        |    |        | 9.5        |
| 9          | W     | Start                | RP     | TB  | AV  | TP  | RP     | TP     | RP     | TB     | AV     | TB     | AV | Finish | 8.2        |
| 10         | W     | Start                | RP     | TB  | AV  | TP  | RP     | TP     | RP     | TB     | AV     | Finish |    |        | 6.6        |



## SAILING INSTRUCTIONS – APPENDIX C WINDWARD/LEEWARD COURSES

### 29 COURSE AREA

29.1 Course Area C will be used unless the Race Officer, in consultation with the Race Committee, deem conditions in the area to be unsuitable for racing and may decide to use Course Area A.

### 30 MARKS, STARTING/FINISHING LINE

30.1 Mark 1 and the Gate marks shall be **orange** inflatable marks.

30.2 Mark 3 shall be a **yellow** inflatable mark.

30.3 The “Change Mark” shall be a **pink** inflatable mark. When, in a subsequent change a new mark is replaced, it shall be by the original mark.

30.4 The starting and finishing lines shall be between a staff displaying, an orange flag at the start and a blue flag at the finish, on the Race Committee Boat and a **black** and **white** check inflatable mark.

30.5 The finishing vessel may be different to the starting vessel.

### 31 COURSES

31.1 The course, compass bearing and approximate distance to Mark 1 & Mark 3 shall be displayed by the Race Committee Boat.

31.2 Courses C2, C3, C4 and C5: Mark 1 shall be rounded to port.

31.3 Courses D2, D3, D4 and D5: Mark 3 shall be rounded to port.

31.4 If one Gate mark is missing, boats shall round the existing mark to port.

31.5 Description of the courses:

| Code | Course                                 |
|------|--|
| C2   | Start - 1 - Finish                     |
| D2   | Start - 3 - Finish                     |
| C3   | Start – 1 – 2s/2p - Finish             |
| D3   | Start – 3 – 2s/2p - Finish             |
| C4   | Start - 1 - 2s/2p - 1 – Finish         |
| D4   | Start - 3 – 2s/2p - 3 – Finish         |
| C5   | Start - 1 – 2s/2p - 1 – 2s/2p – Finish |
| D5   | Start - 3 – 2s/2p - 3 – 2s/2p – Finish |

