

# Coastal Pointscore Series

## Race 6

### Pittwater to Newcastle Race

SATURDAY 13 APRIL 2024

# Sailing Instructions

## 1. RULES

- 1.1. As per NoR 1. RULES with the addition of:
- 1.2. The wearing of Lifejackets and Harnesses is mandatory between the hours of sunset and sunrise and at all times of heightened risk.

## 2. STARTING TIMES

Race	Scheduled Start Time	Date
Pittwater to Newcastle Race	1000hrs	Saturday 13 <sup>th</sup> April 2024

## 3. DIVISION FLAG

- 3.1. The Coastal Pointscore Series shall have one (1) division.
- 3.2. The division flag shall be **Code Flag "R"**.

## 4. REPORTING AT THE START

- 4.1. Boats shall call the Race Committee Vessel on VHF Channel 77 identifying the boat and the number of persons on board (POB) prior to the Warning Signal.
- 4.2. Boats shall pass the stern of the Race Committee Vessel with the mainsail hoisted and advise the Race Officer of their intention to start in the race.

## 5. THE START

- 5.1. The start will be in the vicinity of Lion Island and Barrenjoey Headland.
- 5.2. The Starting Line will be between the staff displaying the orange flag on the Race Committee Vessel and an orange inflatable mark at the other end of the line.
- 5.3. In the event of an unfavourable sea state the start line may be moved inside of Pittwater in the vicinity of Westhead. The Race Committee may advise the change on VHF Ch.77.

## 6. COURSE

- 6.1. Start (Pittwater) – Finish (Newcastle). Approximate distance 50nm.
- 6.2. All marks are to be rounded to Starboard unless otherwise indicated (P), denoting a Port rounding. See Appendix A for mark descriptions.
- 6.3. Where a mark is missing or conditions do not permit a mark to be laid then the GPS position, as described in the Sailing Instructions, shall replace the mark. It is the responsibility of the Skipper/PIC to provide evidence that they sailed the course.

## 7. POSITION REPORTING AND COMMUNICATION

- 7.1. The Race Committee (RC) may broadcast race information before and during the race and or reply to queries received where the information is of general assistance to the fleet. This information will not be deemed "outside help" under the terms of RRS 41. Failure to receive communication from the RC shall not be grounds for redress. This amends RRS 62.1.



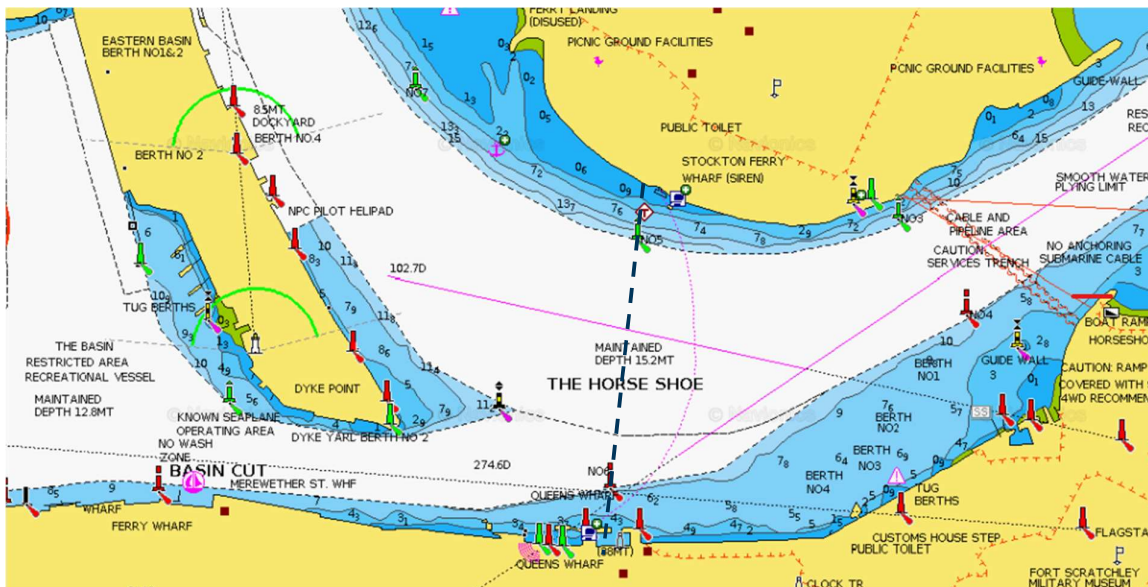
- 7.2. All boats must maintain a continuous listening watch on VHF Channel 16 for the duration of each scheduled race.
- 7.3. Reporting Schedule
  - 7.3.1. All Boats shall make mandatory position reports at 1500hrs, 2100hrs and 0700hrs while racing. Reports shall be made within 15 minutes of these times.
- 7.4. The following information shall be reported to the Race Committee by SMS to 0427 477 854:
  - Boat Name
  - Sail Number
  - Position
- 7.4.1. The position shall be sent as a 4-digit number and longitude as a 5-digit number (without decimals) and whether proceeding North or South.
- 7.5. Acknowledgement will be made by reply SMS with the word **“received”**.
- 7.6. Failure to report as per SI 7 may result in a penalty as detailed in SI 12 at the discretion of the Race Committee or Protest Committee having regard for the circumstances (changes RRS 60.2).

## 8. RETIRING FROM THE RACE

- 8.1. Boats retiring or withdrawing from the race shall advise the Race Committee on 0427 477 854 or Sailing Office (02 9998 3700) as soon as practical.

## 9. THE FINISH

- 9.1. The finish line will be in Newcastle Harbour between the starboard mark No. 5 in the vicinity of the Stockton Ferry Wharf and the port mark No. 6 off the end of Queens Wharf (and their continued transits).



- 9.2. Boats shall advise the Race Committee of their finish time by SMS text on **0427 477 854** with the following information:
  - Boat Name**
  - Sail Number**
  - Finishing Time**
- 9.3. The finish time declaration (text) shall be within 20 minutes of finishing.
- 9.4. Acknowledgement will be made by reply SMS with the word **“received”**.



## 10. TIME LIMIT

- 10.1. There shall be no Time Limit for the race.

## 11. DECLARATION

- 11.1. When a boat is involved in an incident, breaches any RRS, COLREGs, rating rules or needs to report the taking of a penalty, she shall complete the Coastal Pointscore DECLARATION FORM, attached.
- 11.2. Declaration Forms, when required, shall be submitted to the Sailing Office ([sailing@rpayc.com.au](mailto:sailing@rpayc.com.au)) within the Protest Time Limit.

## 12. PENALTIES

- 12.1. Between the hours of sunrise and sunset, a boat may take a penalty in accordance with RRS 44.1.
- 12.2. Between the hours of sunset and sunrise a Scoring Penalty shall apply. The scoring penalty shall be 10 minutes added to the boats elapsed time. (Amends RRS 44.3). A boat infringing in more than one incident shall receive a separate penalty for each infringement.
- 12.3. A boat takes a Scoring Penalty by declaring the incident(s) on their Declaration Form and submitting it to the RC in accordance with SI 11 (Amends RRS 44.3).
- 12.4. Reporting Penalties:
- 12.4.1. First Position Report missed – 20 minutes added to the boat's elapsed time.
- 12.4.2. Subsequent missed position reports – 40 minutes added to the boat's elapsed time.
- 12.5. Placings will be awarded after the application of penalties or granting of redress.
- 12.6. The application of penalties shall affect the placing of other boats, which shall be advanced to fill all preceding places vacated by penalized boats, subject to tied, elapsed or Line Honors results. If two or more boats share the same placing after the application of penalties, the boat(s) with the least or no penalty shall be placed above the boat(s) with the greatest penalty. (Changes RRS 44.3c).

## 13. PRIZES

- 13.1. Provisional results may be published during the race with final results published on the conclusion of the race following protests, penalties, scoring queries etc.
- 13.2. Trophies may be awarded at the Annual Presentation.
- 13.3. Race 6, Pittwater to Newcastle, prizes may be awarded at the Race Presentation on Saturday 20<sup>th</sup> April 2024.

## 14. DISCLAIMER

- 14.1. The OA, the RC, the event sponsors and their respective representatives, officers, members, and volunteers accept no liability whatsoever for any loss of life, property, personal injury or damage caused by or arising out of the Club Marine Bluewater Coastal Series races.
- 14.2. Once a boat has finished or retired from the race the OA, the RC, the event sponsors and their respective representatives, officers, members, and volunteers discharge any further Duty of Care.
- 14.3. Owner and or the Person in Charge and all crew are aware and acknowledge by entering the race that they compete entirely and at their own risk.
- 14.4. Attention is drawn to the World Sailing (WS) Fundamental Rule 3 "Decision to Race" which states, "The responsibility for a boat's decision to participate in a race or to continue racing is hers alone".

## 15. INSURANCE

- 15.1. All boats shall have a current Marine Legal Public Liability Insurance Policy for the duration of the race, with a sum insured of not less than AUD\$10 million (or its equivalent in another currency).
- 15.2. The Policy must state that the boat is insured for the racing in which it is participating in and that it is covered for at least the distance greater than the distance of the Race.

## Appendix A - Ship & Ferry Activated Exclusion Zone

### NSW MARITIME BOAT PERSON'S BRIEF SHIP & FERRY ACTIVATED EXCLUSION ZONE

1. **Be Safe!**
2. **Observe NSW Collision regulations and in particular Rule 1(b) and Rule 2(a)(b) ie:**  
Nothing in these Rules shall exonerate any vessel, or the owner, master or crew thereof, from the consequences of any neglect to comply with these Rules or of the neglect of any precaution which may be required by the ordinary practice of seamen, or by the special circumstances of the case.  
In complying with these Rules due regard shall be had to all dangers if navigation and collision and to any special circumstances, including the limitations of the vessels involved, which may make a departure from these Rules necessary to avoid immediate danger.  
What this means is that if you're about to be involved in a collision, having stood on or given way in accordance with the Rule; every party involved is responsible in taking avoiding action to prevent a collision.
3. Local Rules require sail craft to keep out of the way of ferries displaying the orange diamond. When necessary give priority to the Ferry. Pass well clear of the ferry.
4. Be mindful of larger ships' bow flare. When closing any vessel, to prevent being overrun ensure you remain within sight of the officer of the watch on the vessel's bridge. Beware of overhanging bows and other parts of ship that might obstruct this line of sight. This means that your vessel may disappear from sight inside 200-400 m from the bows of very large ships.
5. **Shipping Sound Signal Meanings:**

**One short blast -**

I am altering course to starboard (right).

**Two short blasts -**

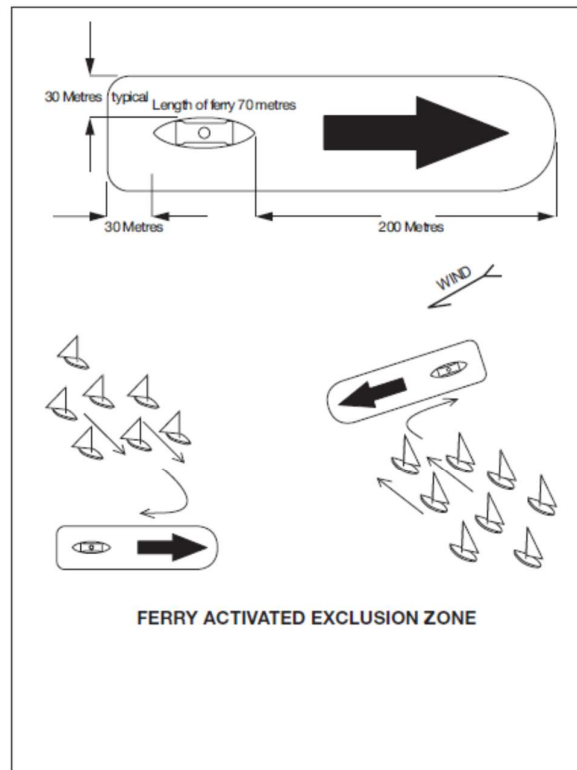
I am altering course to port (left).

**Three short blasts -**

I am operating engines astern (stopping).

**Five (or more) short blasts -** I'm unsure of your intentions and I doubt whether you are taking enough avoiding action to avoid collision.

6. All competitors **must** maintain a minimum distance of **500m** from the bow of any ship and **200m** from the bow of any ferry and no less than **30m** from the sides/stern of any ship or ferry underway.





## Appendix B – Newcastle Harbour Regulations

1. Newcastle Harbour is a very busy commercial port. A motor may be used by a yacht when racing to keep out of the way of commercial shipping (i.e. move out of the channel when a ship is approaching). RRS 42.3(i) allows propulsion using an engine, provided the boat does not gain significant advantage in the race (Amends text reference in diagram below).
2. All boats racing will have engines running when within the Harbour and when within 500m to seaward of the entrance during departure and arrival. A boat that cannot maneuver safely, and is in danger of hindering any commercial shipping, shall only use her engine FOR PROPULSION to clear such shipping. Changes RRS 42. Competitors are reminded that a restricted navigation zone exists on approach to and within Newcastle Harbour (refer to Chart AUS207).
3. If when racing, a yacht receives a “5 horn blast” from commercial shipping (meaning “I am in doubt about your action taken to avoid a collision”), the offending boat may be disqualified from that race without a hearing. This changes RRS Appendix A5.

\*Diagram from NCYC Sailing Handbook:



4. The Organizing Authority will not accept any liability for material damage or personal injury or death sustained in conjunction with, prior to, during or after these races.
5. A condition of racing with us is to read the Harbour Safety Information booklet:  
[Harbour Safety Information Booklet](#)  
[Click HERE to complete the Harbour Safety Declaration](#)

Also see the other useful information –  
[Look Out Ships About – Port Authority](#)  
[Harbour Safety Module](#)



# Bluewater Pointscore Coastal Series

## DECLARATION FORM

(to be completed in the event of a required reporting incident or infringement as below)  
Race 1 | Race 2 | Race 3 | Race 4 | Race 6

To be submitted via email: sailing@rpayc.com.au

TO BE SIGNED BY THE OWNER OR HIS REPRESENTATIVE

Boat Name ..... Sail No ..... I am a member

Of ..... Yacht Club and I was on board and in charge of the above-mentioned Boat,

while sailing in the ..... RACE on \_\_\_ / \_\_\_ / \_\_\_\_.

I declare that during the race there was infringement(s) as follows: (please initial and submit a detailed report)

- World Sailing Racing Rules of Sailing \_\_\_\_\_
- International Regulations for Preventing Collisions at Sea \_\_\_\_\_
- RPAYC Sailing Instructions and Special Regulations \_\_\_\_\_
- Australian Sailing Special Regulations \_\_\_\_\_
- alterations made affecting Rating  
since the boat was last measured or spare mainsail used \_\_\_\_\_

If any of the above items are initialled; a detailed report of the infringement or incident should accompany this declaration.

The Boat crossed the finishing line (Please insert details): -

Date of Incident .....

Time of Incident .....

Any other boats involved in the incident ...../.....

(Owner/Representative) Signed .....

To be submitted to: RPAYC Sailing Office or email: sailing@rpayc.com.au