

PITTWATER TO  
COFFS HARBOUR  
YACHT RACE



38<sup>th</sup> Pittwater to Coffs Harbour Yacht Race

# Skipper's Briefing

# Content



- Trackers
- Communication & Tracking
- Start
- Finish
- Berthing
- Weather

# Communication (SI 10 & Appendix A)

**PITTWATER TO  
COFFS HARBOUR  
YACHT RACE**



- Check in at the Start – SI 11
- VHF Ch. 77 at Start and Finish
- Reporting during the race – no skeds
- Must communicate Retirement from race
- Finish – text finish time to  
0427 477 854: SI 19
- Declarations – only if you are taking a penalty or reporting a breach of the rules

# Tracking



- Trackers are turned on and working
- Tracker Failure – we will contact you
- Tracker Links at the end of the presentation
- Low bandwidth links: integrate with navigation software
- Player Link
- Download the App: YB Races

# Start



- Reporting at the Start SI 11
- Lifejackets & Safety Harnesses on
- Start time – 1300hrs: Monohulls & Multihulls (see amendment No.1)
- Red inflatable inner distance mark at Starboard end. Do not go between the mark and the boat.

# The Finish



- Call Race Committee on VHF 77 when 5nm from the finish
- Finish line is formed by the leading lights – make sure you have completely crossed the leading lights before turning into Coffs Harbour

# Berthing – Coffs



- Berths have been allocated in Star Marina's Coffs Harbour International Marina
- Met by boat and guided to berth
- Met at berth by volunteers – please hand over tracker in exchange for beer and food vouchers
- Coffs Harbour Yacht Club open throughout the finish

# Weather – Roger (Clouds) Badham

- Friday 22<sup>nd</sup> March

High pressure off the NSW south coast – a weak ridge from that high onto the mid north coast; E-NE wind south of the ridge and SE wind north of the ridge. The ridge moves slowly north to be near Smoky Cape by midnight.

FORECAST WIND. SW-SE/5 until midday then SE-E/5-10 shifting E-NE/8/12 afternoon then NE/12-16 night easing and shifting back right to SE overnight.

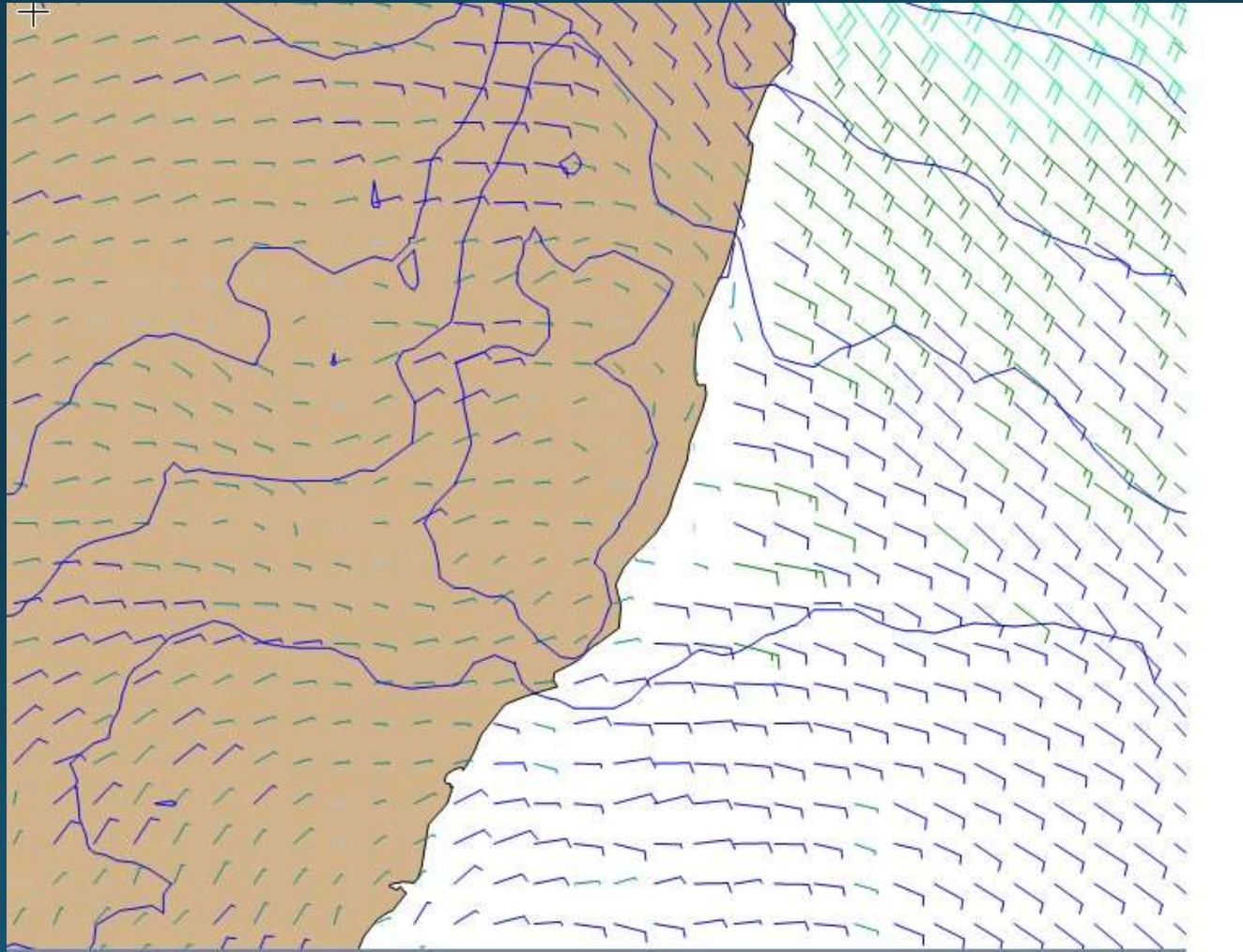
Wind very light near the shoreline overnight

WAVES/SWELL SE swell of 2m decreasing to 1.5m. A lesser E swell. Local waves mostly less than 1m

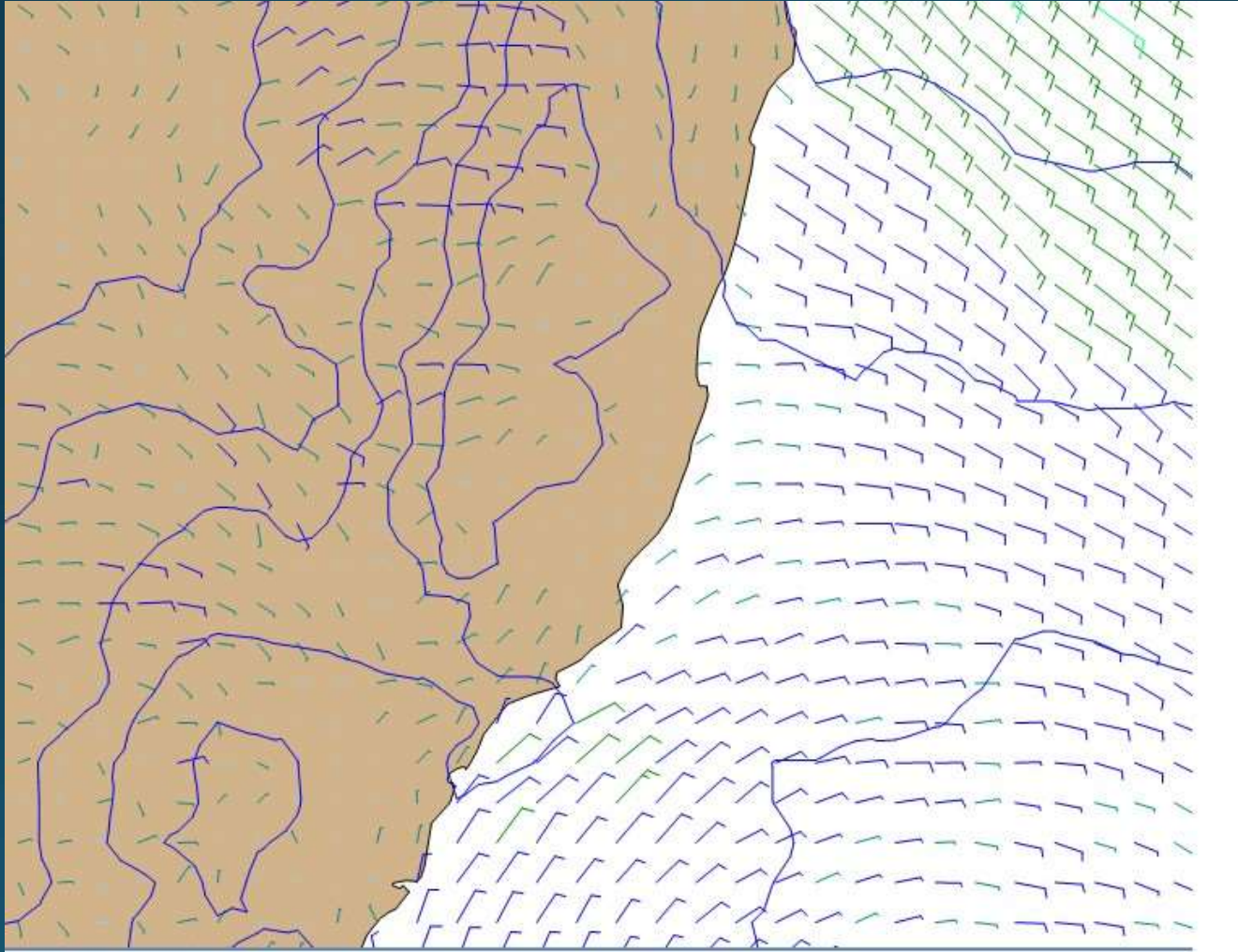
WEATHER partly cloudy – a light shower or drizzle possible in the north.



- Friday 22<sup>nd</sup> March – 1100hrs



- Friday 22<sup>nd</sup> March – 2300hrs



Saturday 23<sup>rd</sup> March

High pressure moves to the central Tasman Sea – less pronounced ridge to the NSW coast. NE flow on much of the NSW coast, but rather soft wind flow north of Smoky Cape. A weak S change to move onto the NSW south coast during and later afternoon and reaching Sydney near midnight.

FORECAST WIND -W/<5 on the shoreline in the morning then SE-NE/5-10 afternoon.

E-NE/5-10 offshore south of Crowdy Head and SE-E/5-10 north of Crowdy Head.

SW-W/5 in close at night.

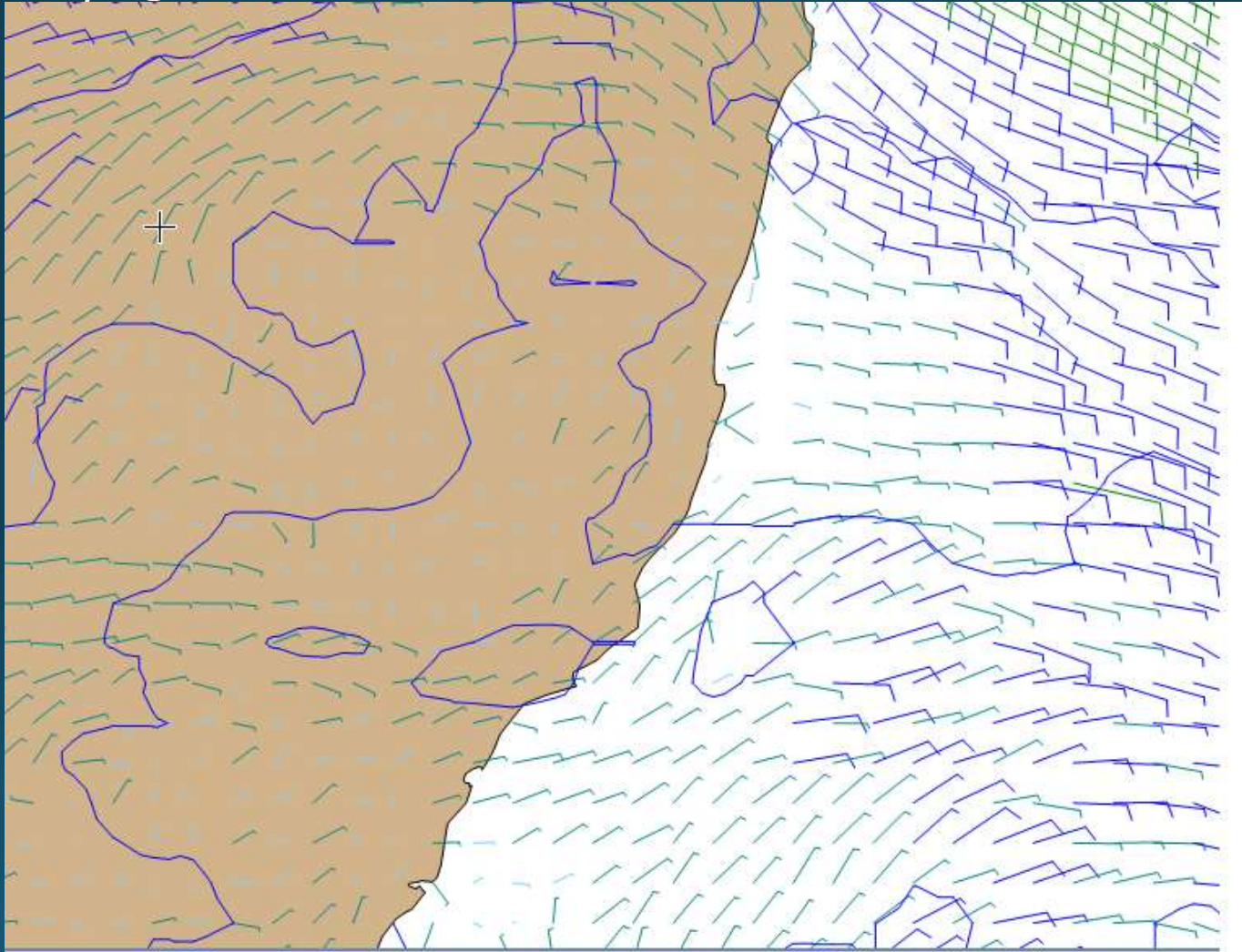
WAVES/SWELL - SE swell of 1.5m with lesser E/1m swell. Local waves less than 1m

WEATHER

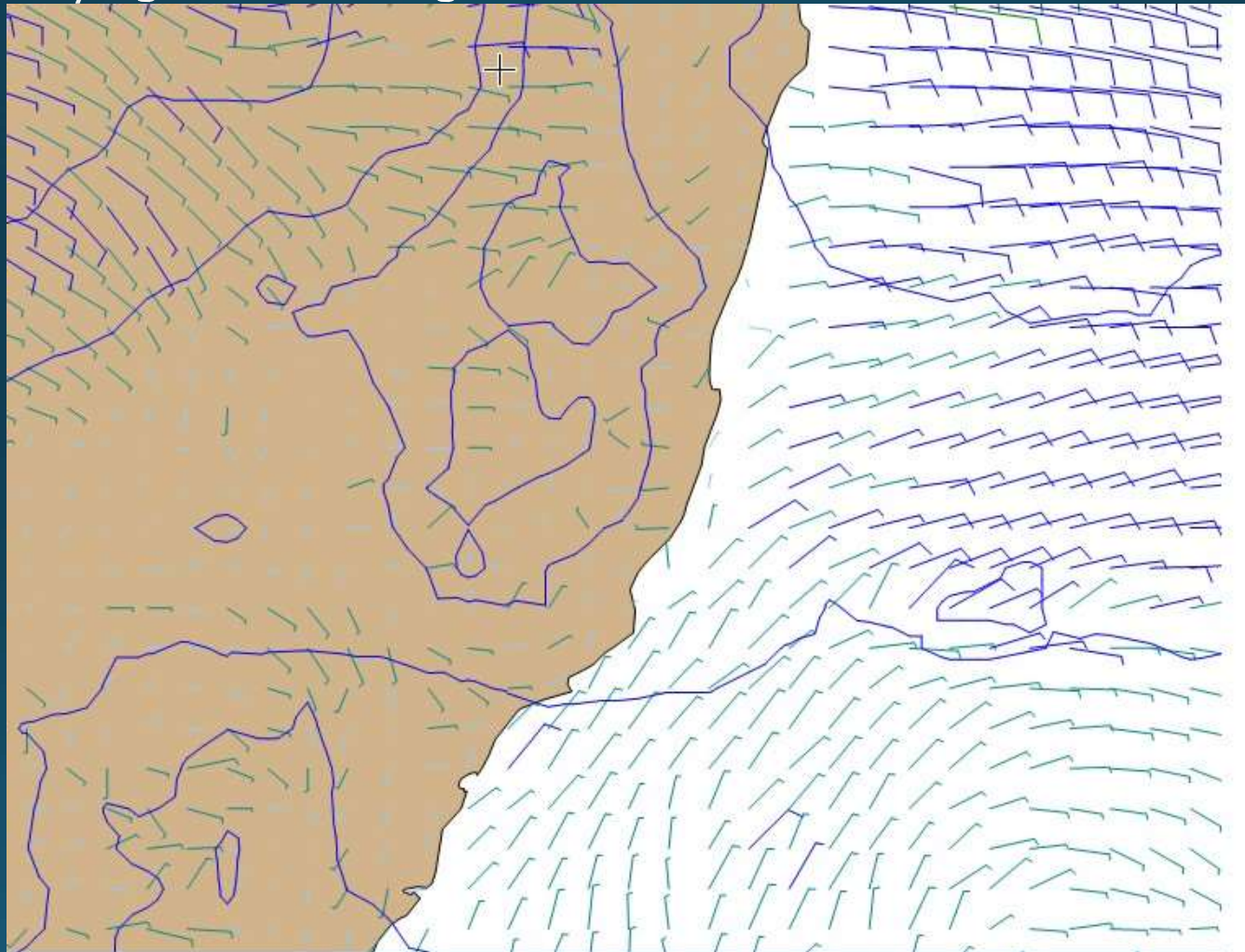
Partly to mostly cloudy with a few light showers in the north.



- Saturday 23<sup>rd</sup> March – 1100hrs



- Saturday 23<sup>rd</sup> March – 2300hrs



Sunday 24<sup>th</sup> March

High pressure central Tasman with rather weak SW-S flow along much of the NSW coast early to midday. A thermal left shift in the afternoon with SE-NE in the afternoon but slower and less breeze north of Smoky Cape with SE-E. A weak ridge from the high over the Tasman to the NSW coast very close to Coffs.

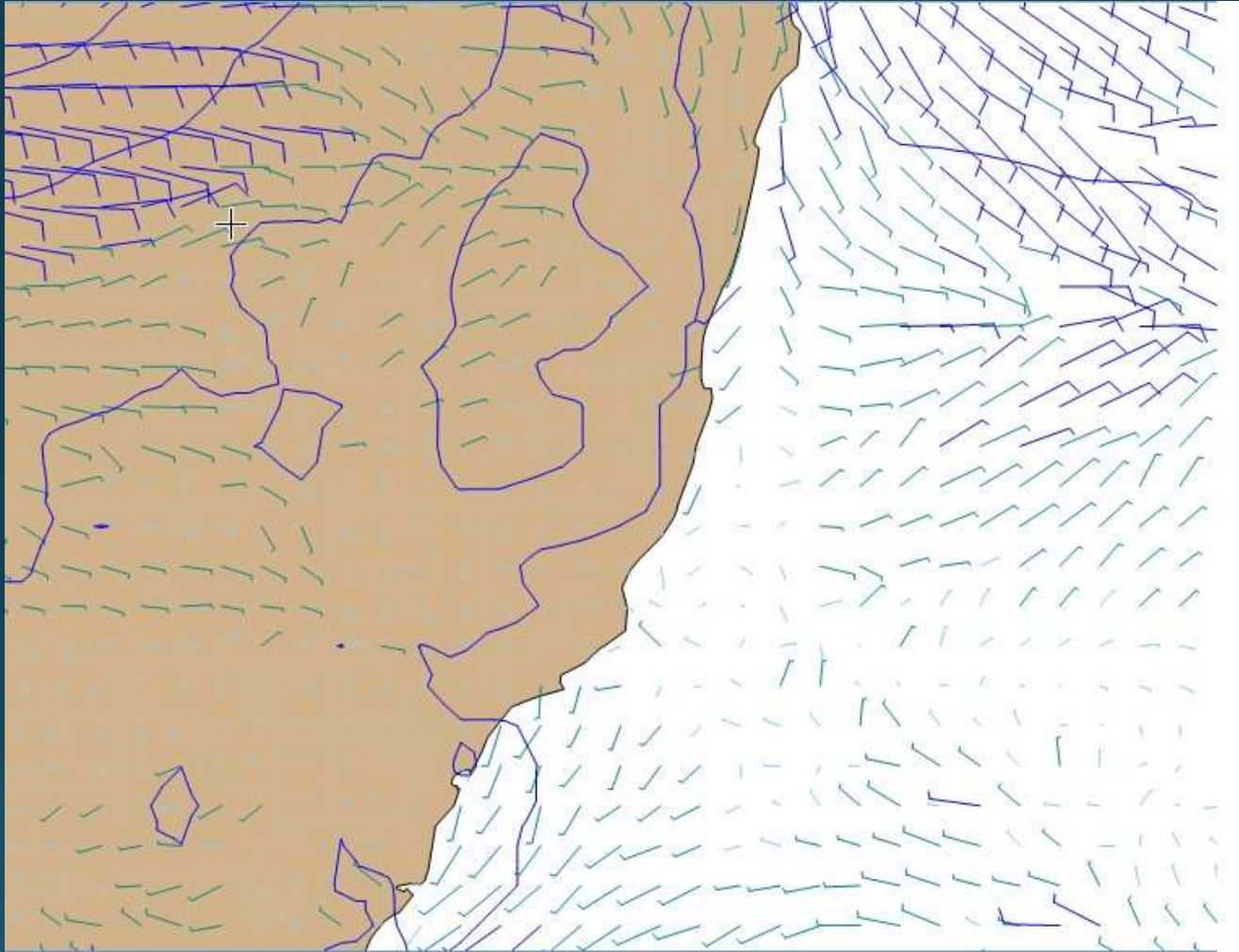
FORECAST WIND - SW/5 then S-SE/5-10 shifting SE-E/5-10 later afternoon and night. Wind shifting back to SW/5 in close at night, but E/7-12 well away from the coast.

WAVES/SWELL SE swell of 1.5m decreasing with E/1m swell becoming the main swell. Local waves of 1m or less.

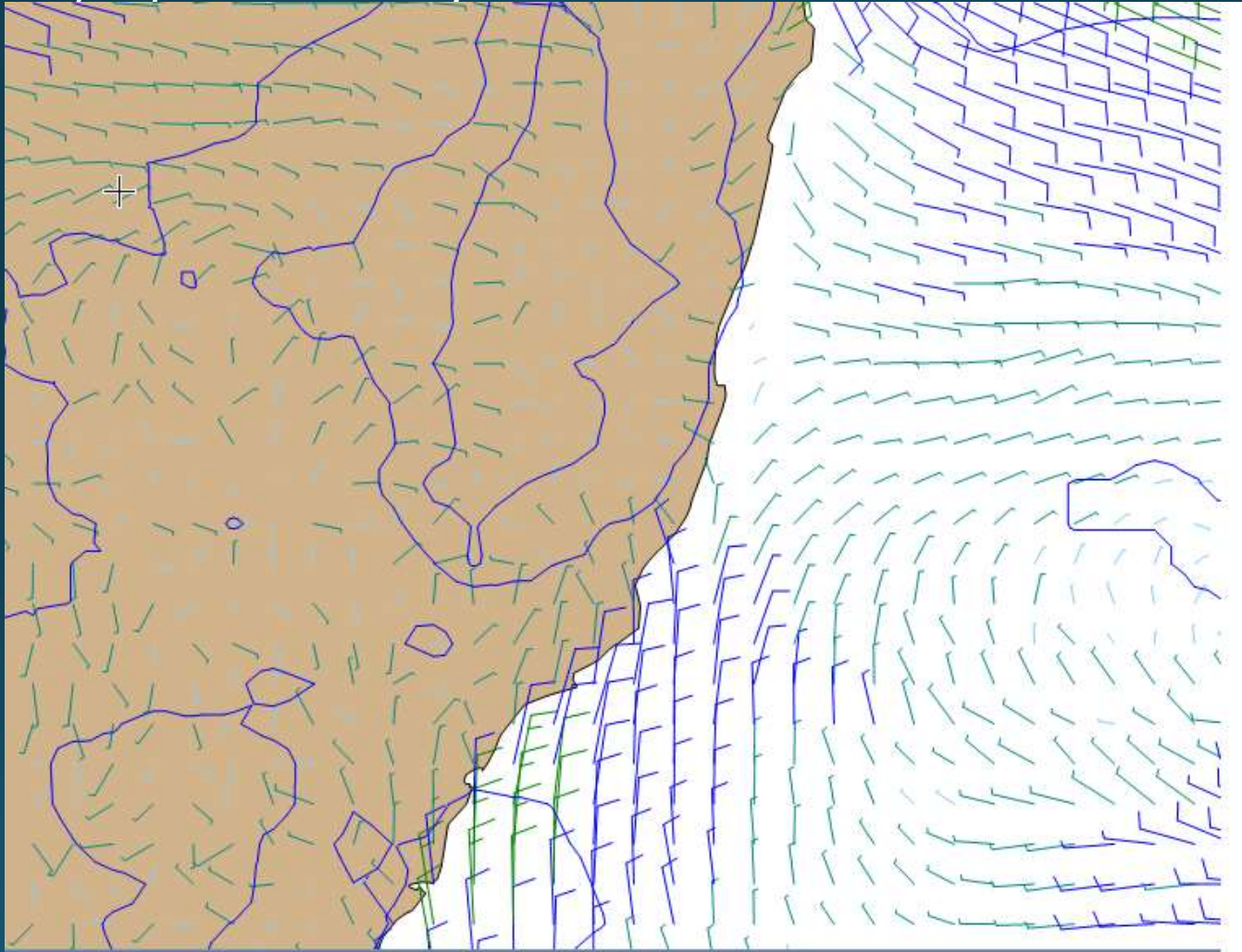
WEATHER mostly cloudy with morning light rain then mainly dry.



- Sunday 24<sup>th</sup> March – 1100hrs



- Sunday 24<sup>th</sup> March – 2300hrs





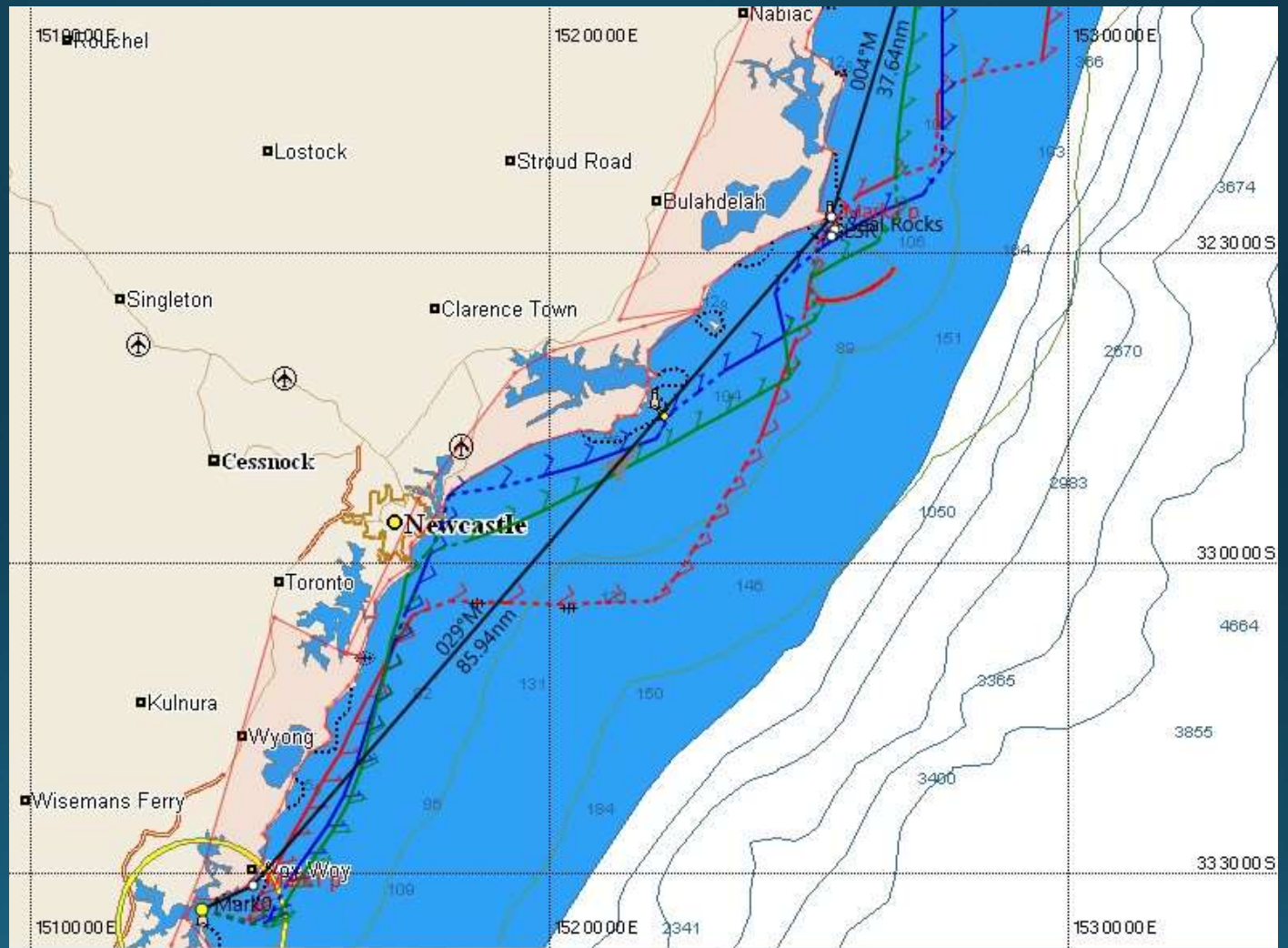
## P2C Routing - South

### Legend

Red – 60ft: 1 day  
11hrs

Blue – 40ft: 2 days

Green – 30ft: 2 days  
4 hrs



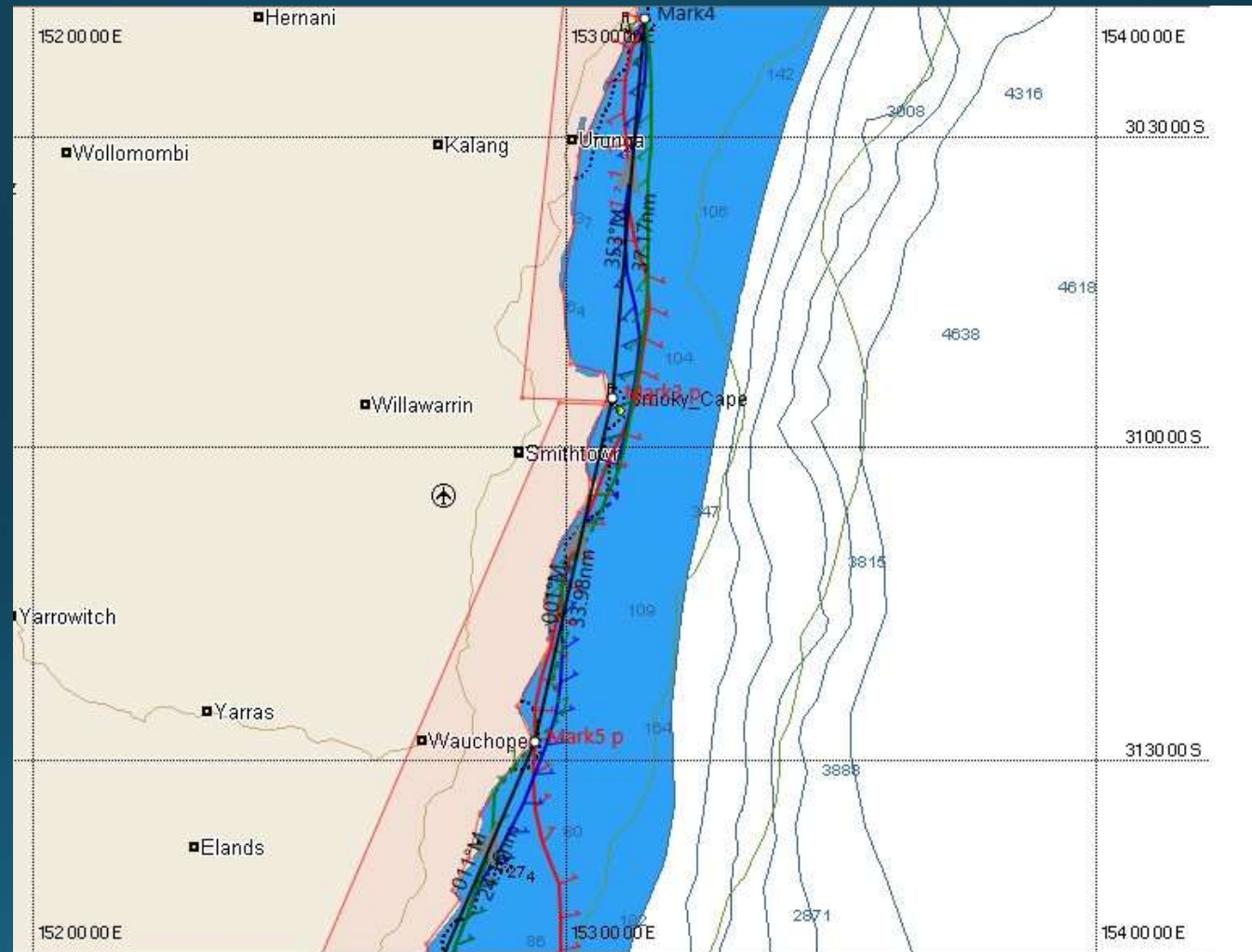
## P2C Routing - North

### Legend

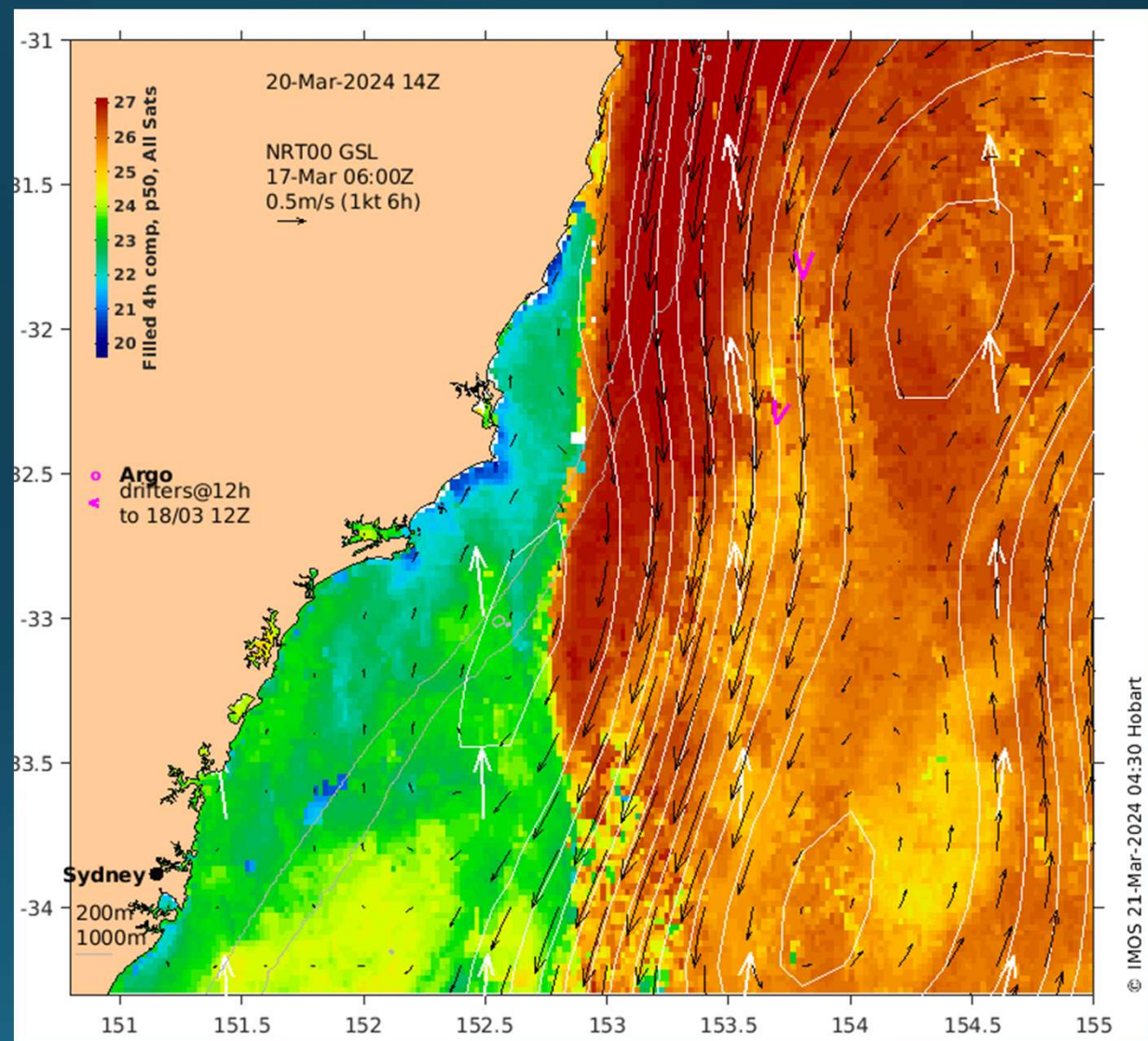
Red – 60ft: 1 day  
11hrs

Blue – 40ft: 2 days

Green – 30ft: 2 days  
4 hrs

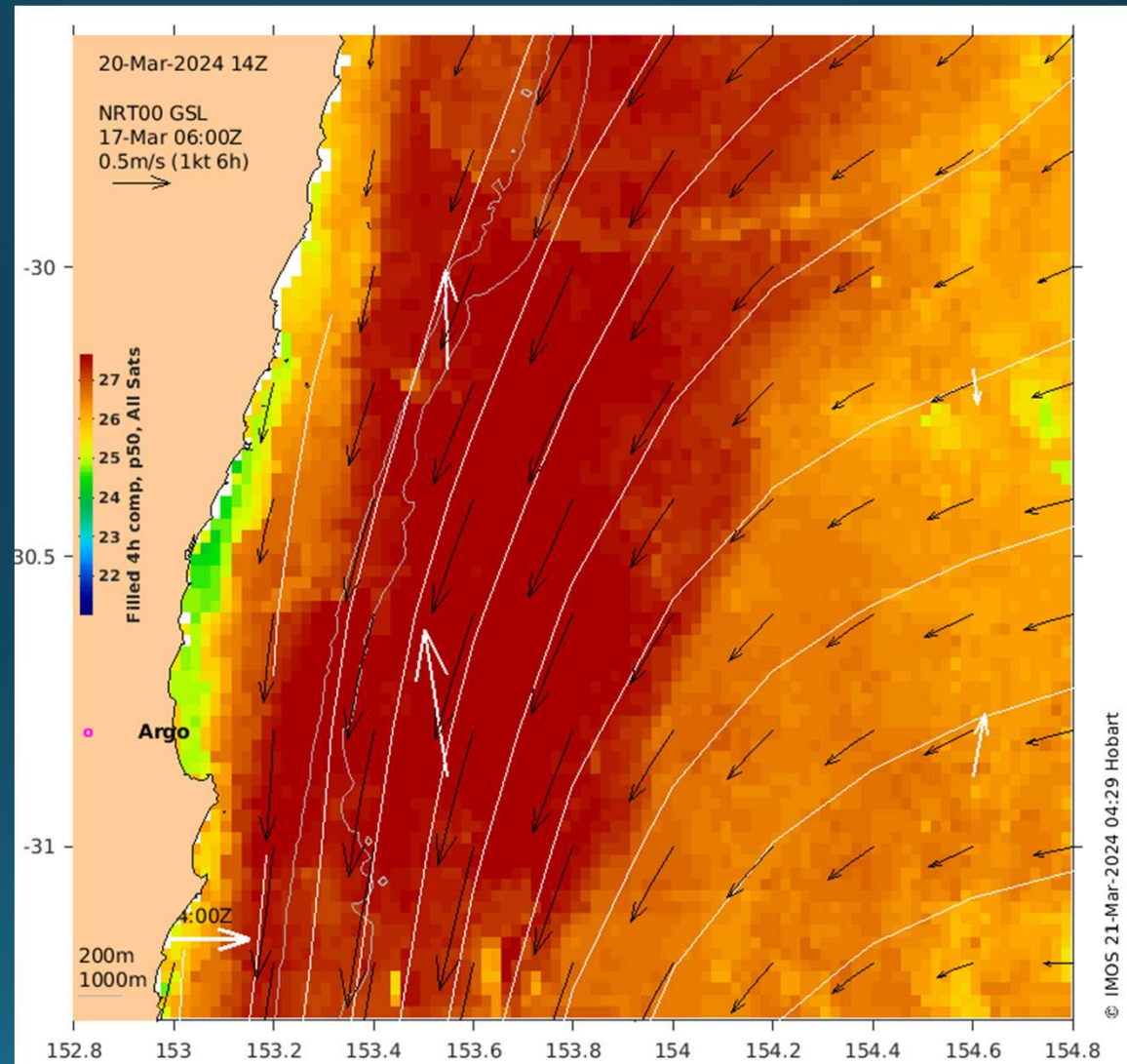


# Sydney - Smokey Cape





# Smokey Cape – Coffs Harbour



# Tracking Links

- Scan the codes

Public Race Player



Low Bandwidth Links



PITTWATER TO  
COFFS HARBOUR  
YACHT RACE



38<sup>th</sup> Pittwater to Coffs Harbour Yacht Race

# Questions?