

# Pittwater Regatta 2024

10<sup>TH</sup> – 11<sup>TH</sup> FEBRUARY 2024

## SAILING INSTRUCTIONS

- 1 RULES** – see NoR 1 & B1
- 2 COMMUNICATION** – NoR 4 & B2: **VHF Ch. 77**
- 3 ELIGIBILITY** – see NoR B3
- 4 MEASUREMENT & EQUIPMENT INSPECTION** – see NoR 8
- 5 SCHEDULE** – see NoR 7 & B4
- 6 PENALTY SYSTEM** – see NoR 9
- 7 SCORING** – see NoR 10 & B6
- 8 TROPHIES & PRIZES** – see B7
- 9 BERTHING** – see NoR 12
- 10 HAUL-OUT RESTRICTIONS & DIVING EQUIPMENT & PLASTIC POOLS** – see NoR 14 & 15
- 11 RISK STATEMENT** – see NoR 16

### 12 CHANGES TO SAILING INSTRUCTIONS

- 12.1 Changes to the schedule will be posted by 2000 on the day before they will take effect. Other changes will be posted before 0900hrs on the day they take effect.
- 12.2 Changes to the Sailing Instructions made afloat will be indicated by the display of Code Flag 3rd Substitute accompanied by two sound signals. This may be communicated orally.

### 13 SIGNALS MADE ASHORE

- 13.1 Signals made ashore will be displayed on the official flagstaff at the club.
- 13.2 The Warning Signal will not be made less than 60 minutes after “AP” is lowered ashore. This changes RRS Race Signals “AP”.

### 14 AREAS THAT RANK AS OBSTRUCTIONS

- 14.1 While racing in Pittwater, boats shall not sail within the area of water between registered moorings (including Police or NSW Maritime moorings) and the adjacent shoreline inside Pittwater. These areas rank as obstructions.

### 15 SCHEDULED STARTING TIMES

Saturday 10 February	First Warning Signal	1125hrs
Sunday 11 February	First Warning Signal	1125hrs

- 15.1 On the final day of the regatta no Warning Signal will be made after 1600hrs.

### 16 CLASS FLAGS

- 16.1 The Class flag shall be:

Division 1:	Numeral Pennant 5
Division 2:	Numeral Pennant 6
Division 3:	Numeral Pennant 7
11m Class:	Numeral Pennant 4

### 17 COURSE AREA

- 17.1 Course Area A: Pittwater and Broken Bay

### 18 TIME LIMIT

- 18.1 The Time Limit Saturday 10<sup>th</sup> February is 1630hrs.
- 18.2 The Time Limit for each race on Sunday 11<sup>th</sup> February is 120 minutes.
- 18.3 Boats failing to finish within the Time Limit shall be scored TLE. Boats scoring TLE shall score points 1 more than the number of boats to complete the course and finish in accordance with RRS28. Changes RRS 35, A4 & A5

### 19 PROTESTS AND REQUESTS FOR REDRESS

- 19.1 The protest time limit is 90 minutes after the last boat finishes in the last race of that day.



- 19.2 Notices will be posted no later than 20 minutes after the protest time limit informing competitors of hearings in which they are parties or named as witnesses.
- 19.3 The penalty, if any, for any infringement of the rules other than RRS Part 2 is at the sole discretion of the Protest Committee and may be other than disqualification. This changes RRS 64.1.
- 19.4 On the last day of the regatta a request for reopening a hearing or redress shall be delivered no later than 30 minutes after the decision was posted. Changes RRS 62.2.

## 20 MARKS

### 20.1 Marks and Mark descriptions:

CODE	NAME	DESCRIPTION	Approximate Position
AV	Avalon (Clareville)	Fixed Yacht Mark, positioned northwest of Avalon Sailing Club at approximately;	33° 37.6' S, 151° 18.6' E
BJH	Barrenjoey Headland	Eastern <b>Headland</b> at the entrance to Pittwater	
BXH	Box Head	Inflatable Mark, positioned east of Lion Island at approximately:	33° 33.3' S, 151° 20.4' E
CH	Challenger Head	Inflatable Mark, positioned approximately 200m north of Challenger Head	33° 35.13' S, 151° 15.05' E
CR	Coasters Retreat	Inflatable Mark approximately 200m southeast of Mackerel Beach Mark	33° 35.85' S, 151° 18.45' E
EB	Ellis Buoy	Inflatable Mark southwest of the Avalon mark	
F	Windward Mark	Inflatable Mark approx. 0.5nm to windward of the start line.	Bearing displayed by the Committee Boat
ISP	Inner Stokes Point	Inflatable Mark approximately 100m southwest of Stokes Point fixed yacht mark	
LN	Longnose Point	Fixed Yacht Mark, positioned southwest of Longnose Point, at approximately;	33° 37.4' S, 151° 18.0' E
MB	Mackerel Beach	Fixed Yacht Mark, positioned near Great Mackerel Beach, at approximately:	33° 35.7' S, 151° 18.3' E
PH	Pacific Head	Inflatable Mark, positioned approximately 0.2nm east of Pacific Head	33° 33.7' S, 151° 16.5' E
RP	Rocky Point	Fixed Yacht Mark, positioned northeast of Rocky Point, at approximately;	33° 37.9' S, 151° 17.4' E
SDP	Soldiers Point	Fixed Yacht Mark, north of Soldiers Point, at approximately;	33° 36.0' S, 151° 18.3' E
SP	Stokes Point	Fixed Yacht Mark, positioned around 200m northwest of Stokes Point, at approximately;	33° 36.7' S, 151° 18.8' E
SPC	Salt Pan Cove	Inflatable Mark northwest of Salt Pan Cove Maritime Beacon, towards Scotland Island	
TB	Towlers Bay	Fixed Yacht Mark, positioned around 400m from the shoreline in Morning Bay (Towlers Bay), at approximately;	33° 37.5' S, 151° 17.6' E
TP	Taylors Point	Fixed Yacht Mark, northwest of Taylors Point Wharf, at approximately;	33° 37.9' S, 151° 18.3' E
WHL	West Head Land	Western <b>Headland</b> at the entrance to Pittwater	
WP	Woody Point	Inflatable mark laid approximately 100m east of Woody Point.	

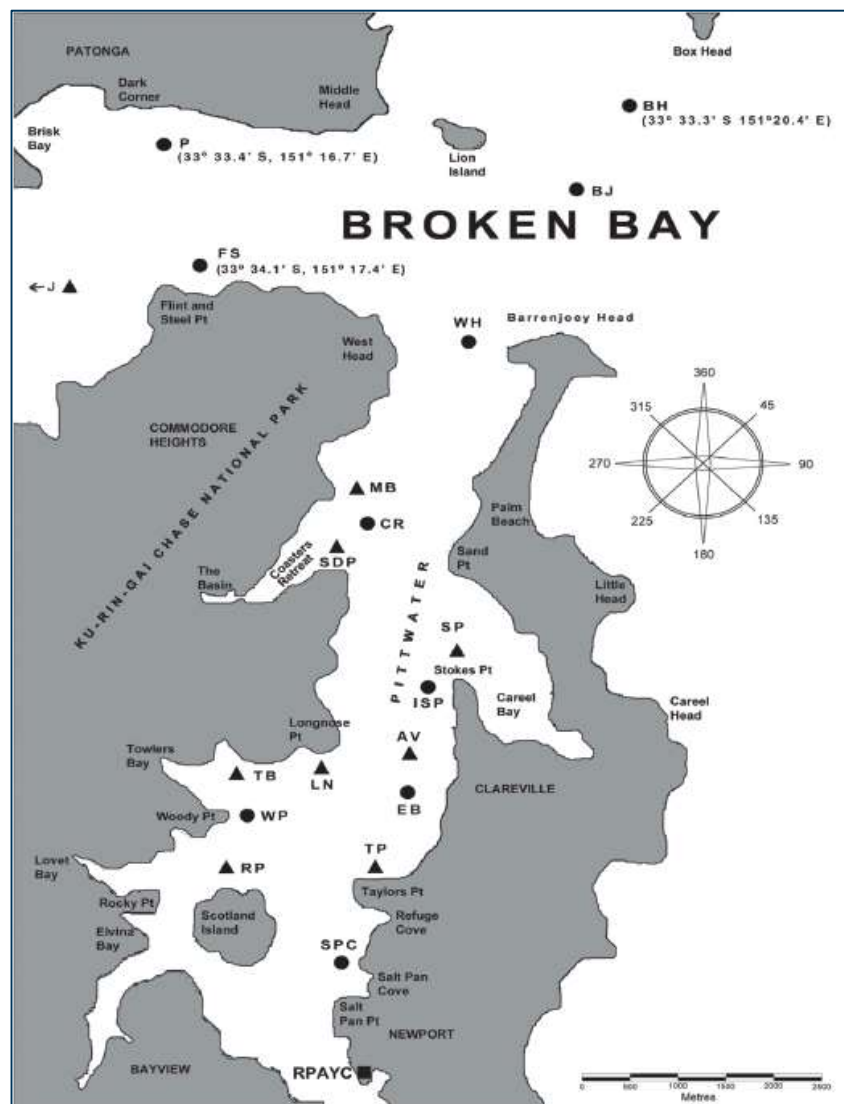


## 21 START & FINISHING LINE

- 21.1 The Starting area for the races 1 and 2 will be south of Longnose Point. The starting area for the race 3 shall be announced at the end of race 2.
- 21.2 The race committee will announce on VHF Ch. 77 the approximate position of the finishing line.
- 21.3 The starting and finishing lines shall be between a staff displaying, an orange flag at the start and a blue flag at the finish, on the Race Committee Boat and a **orange** mark at the start and a **pink** inflatable mark at the finish.
- 21.4 The finishing vessel may be different to the starting vessel.

## 22 COURSE

- 22.1 The Course for Race 1 – Broken Bay Five Heads Race:  
**Start – WHL (P) – PH (P) – CH (P) – BXH (S) – BJH (pass P) – Finish.** Approx. Distance 20nm.
- 22.2 The Courses for Races 2 and 3 will be selected from the list of courses below:
- 22.3 The course to be sailed shall be announced by the race committee on VHF Ch.77 no later than the Warning Signal for each division and displayed from the Committee Vessel.
- 22.4 Competitors may request repeats of the course without infringing RRS41, or a repeat of any other announcement by the Race Committee.



## COURSE SHEET

Course No.	Wind	Laid Inflatable Mark			All marks are to be rounded to Starboard unless indicated as Port - (P)										Approx. NM
0	All	To be announced by the Race Officer by VHF													
1	NE	Start	ISP	TP	RP	ISP	RP	ISP	TP	RP	Finish				11
2	NE	Start	ISP	RP	LN	TP	RP	ISP	RP	Finish					9.1
3	NE	Start	ISP	RP	ISP	TP	RP	Finish							7.4
4	E	Start	EB	SPC	TB	EB	TB	EB	SPC	TB	EB	Finish			8.0
5	E	Start	EB	TB	EB	SPC	TB	EB	TB	EB	Finish				6.2
6	SE	Start	SPC(P)	CR	TP	CR	SPC	TB	Finish						12.7
7	SE	Start	SPC(P)	CR	SPC	TB	SPC	TB	Finish						9.2
8	S	Start	SPC(P)	CR	SPC	CR	Finish								11
9	S	Start	SPC(P)	MB(P)	SPC	LN	Finish								10
10	SW	Start	RP	SP(P)	RP	SP(P)	RP	AV	Finish						9
11	SW	Start	RP	SP(P)	RP	LN	RP	AV	Finish						7.3
12	W	Start	RP	TB	AV	TP	RP	TP	RP	TB	AV	TB	AV	Finish	8.2
13	W	Start	RP	TB	AV	TP	RP	TP	RP	TB	AV	Finish			6.6
14	NW	Start	TB	EB(P)	SP(P)	MB(P)	TP	WP(P)	SPC(P)	Finish					8.9
15	NW	Start	TB	EB(P)	SDP(P)	TP	WP(P)	SPC(P)	Finish						7



# PITTWATER TO COFFS HARBOUR RACE

22 - 24 MARCH, 2024

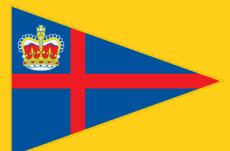
PITTWATER TO  
COFFS HARBOUR  
YACHT RACE

2024

Coastal Classic Race for all sailors  
IRC - ORC - PHS - OMR Scoring



MORE INFORMATION AT  
[www.pittwatertocoffs.com.au](http://www.pittwatertocoffs.com.au)



ROYAL PRINCE ALFRED  
YACHT CLUB

16 Mitala Street Newport  
[www.rpayc.com.au](http://www.rpayc.com.au)



**SYDNEY TO  
AUCKLAND  
OCEAN RACE**

**20  
25**

# Race the Tasman

**THE RACE OF A LIFETIME BETWEEN TWO LEGENDARY  
SAILING CITIES...**

**INTRODUCING THE 2025 SYDNEY TO AUCKLAND OCEAN  
RACE**

A 1250nm race across the Tasman, the Sydney to Auckland Ocean Race is a Category 1 event open to offshore cruising and racing yachts, Superyachts & ocean racing multihulls.

Starting in Sydney Harbour on **October 11, 2025**, the race will culminate in Auckland; famously known as the City of Sails and home to The America's Cup.

**Don't miss this ultimate sailing event!**

**Start your adventure today**

ENTRIES NOW OPEN | [sydneytoauckland.com](https://sydneytoauckland.com)

