



# ROYAL PRINCE ALFRED YACHT CLUB

---

## *Prospective Member Information*



16 Mitala Street, Newport, 2106  
(02) 9998 3700  
[membership@rpayc.com.au](mailto:membership@rpayc.com.au)

April 2023



# WELCOME TO THE CLUB

---



Royal Prince Alfred Yacht Club (RPAYC), colloquially known as “The Alfreds”, is a yacht club based on Pittwater.

We offer year-round inshore and offshore racing, cruising, centreboard dinghy racing, sail training and courses with a large marina accommodating up to 352 vessels.

The Alfreds strength comes from a simple focus on its core Constitutional objective; “to promote the sport of yachting and boating”.

Welcome to the Alfreds, why not come to the Club and see for yourself?

# HISTORY OF THE CLUB

---

It is known that a club called The Mosquito Yacht Club was founded in 1856.

On Tuesday, 15th October 1867, an advertisement was placed in The Sydney Morning Herald - "Mosquito Yacht Club - Boatowners wishing to join please meet at McGrath's at 8 tonight." The advertised meeting duly took place at Punch & McGraths Hotel in King Street and, with Mr. T. Strickland in the chair, it was decided to form a yacht club to be called "Prince Alfred Yacht Club."

The name Prince Alfred was adopted to commemorate Prince Alfred's forthcoming visit to Sydney. In January 1868, His Royal Highness, Prince Alfred, The Duke of Edinburgh, in command of HMS Galatea sailed into Port Jackson. He was met by two lines of yachts from the Royal Sydney Yacht Squadron and the Prince Alfred Yacht Club, between which HMS Galatea passed.

In August 1911, Prince Alfred Yacht Club was given permission by King George V to use the prefix "Royal".

The Club originally occupied premises in Moore Street, Sydney, known today as Martin Place and it eventually moved into 51 Castlereagh Street. In 1956, the Club purchased property in Rowe Street and a new building was built on the site.

In 1919, the Committee decided that Sydney Harbour was becoming too congested for yacht racing and a sub-committee was formed to inspect land that would be suitable for yacht racing in the Pittwater area.

As a result, Green Point was purchased for this purpose for an amount of 650 pounds. Apart from a few tree-planting ceremonies, the land remained practically unused until a group of enthusiasts, who had built Jubilee class yachts, banded together and built a boatshed, slipway and pontoon to cater for their needs. The Governor of New South Wales, the Honorary Commodore of the Club, Lord Wakehurst, officially opened the current premises on 17th December, 1938. No less than 22 Jubilees started in the race held that day.

---

Unfortunately, during World War II yachting in Pittwater and Sydney Harbour was disbanded. After the war, in 1947, the boatshed was increased in size, moorings were laid in Crystal Bay and Pittwater again came to life.

In 1956, a caretaker's cottage was erected adjacent to the boatshed; a liquor licence obtained and a small bar built by converting four lockers in the boatshed. Four sheep were kept on Green Point for use as mobile lawn mowers and a cattle ramp was erected at the front entrance to contain the sheep within the property.

The slipway and boat storage area were re-built in 1957 by the use of voluntary labour. The racing fleet began increasing in leaps and bounds.

The Club purchased the adjoining property, Moonbar, on the western side of Mitala Street and converted the building into a Clubhouse. This land, previously owned by Mr. Ashley Buckingham, became known as Buckingham Palace. It became a popular venue for club members, with a lawn area and in-built swimming pool.

In 1962, the Club dredged the north western side of Crystal Bay and reclaimed an area between Moonbar and Green Point.

Marina A, accommodating some 52 vessels, was constructed from the dredged area. At the same time, a hardstand area was established in front of the cottage to accommodate ten 5.5 metre yachts.

Yacht racing on Pittwater in the sixties was gaining momentum. Moonbar although extended, was unable to cope with the influx of members and guests, so it was decided that a new clubhouse should be built on Green Point to cater for the larger patronage.

On 15th May 1968, probably the club's most important function was held.

His Royal Highness, Prince Phillip, the Duke of Edinburgh visited to lay a foundation stone for the present clubhouse. Unfortunately, due to torrential rain and a 60-knot southerly, Prince Phillip laid the stone by remote control from Moonbar. Regardless, it was a memorable day for members when this royal "sailor" joined them for lunch.



---

1969/70 saw significant progress in the club's development. Pittwater was booming, the city premises was wanted by developers and an opportunity arose for the city club to join The Sydney Club, formerly The Millions Club. By selling the city property and developing Pittwater, it meant that members using the city premises would be happily accommodated almost next door at the Sydney Club and development could continue at Pittwater.

The Sydney Club was located at 9 Rowe Street, Sydney, and all RPAYC members were automatically yachting members of the Sydney Club.

The Sydney Club had excellent bar and dining facilities available for lunch and dinner and RPAYC members were welcome to join in any of its activities such as golf and theatre parties.

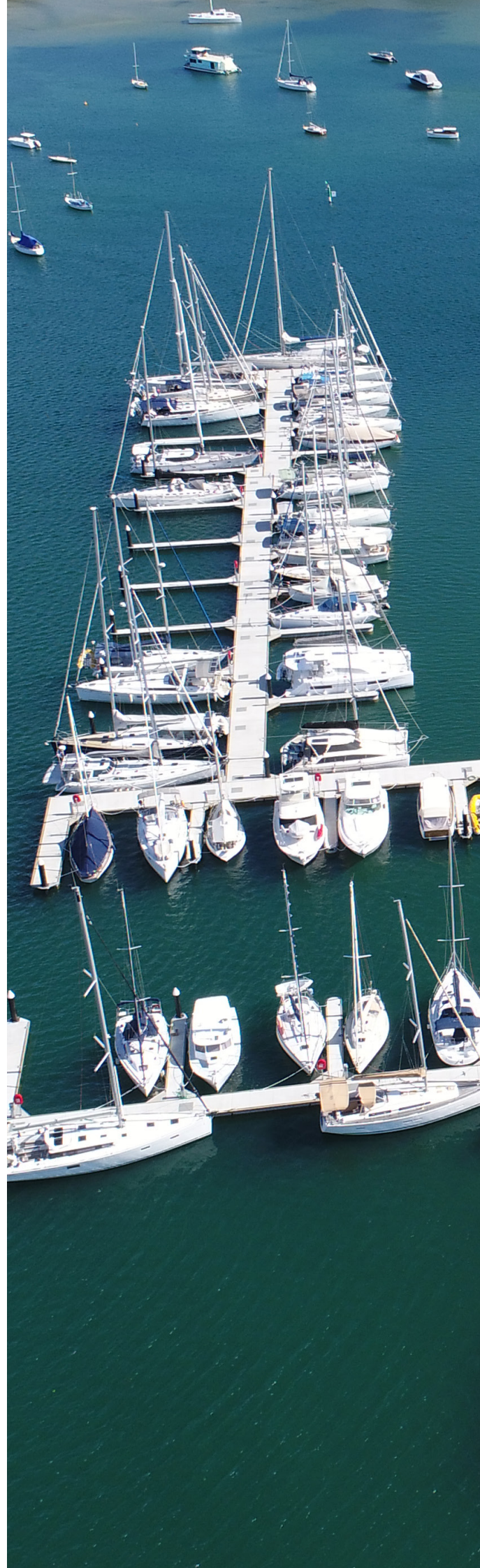
The Sydney Club ceased when it amalgamated with the University and Schools Club, which is now situated at 60 Phillip Street, Sydney.



# CLUBHOUSE FACILITIES

---

- Halyards Bistro and Bar offers relaxed alfresco dining, Monday through Sunday for breakfast and lunch.
- Halyards Bistro and Bar is open for dinner Thursday through to Saturday.
- Edinburgh Bar and Lounge on Friday evenings is the perfect place for a pre-dinner aperitif, with an open fire in winter and a balcony to watch the sunset in summer.
- Function and meeting rooms are available to hire free of charge for RPAYC Members.
- Jack Gale Centre (the Club's training facility room).
- Library, children's playground and billiards room, featuring two full size billiard tables.
- Sailfit Fitness Centre (gym fees are additional to membership fees and an induction must be undertaken prior to becoming a Sailfit Gym member).
- Laundry, showers and
- Disabled amenities and parking.









# MEMBERSHIP OF RPAYC

---

## CATEGORIES OF MEMBERSHIP

- **Full**  
*Obligatory for all boat owners (except off the beach vessels)*
- **Full Family**  
*For boat owners, children aged 6-21 and a spouse (if applicable)*
- **General**  
*For non-boat owners, however non-boat owners may still join as Full members*
- **General Family**  
*For non-boat owner, children aged 6-21 years and a spouse (if applicable)*
- **General Intermediate**  
*For boat and non-boat owners aged 22 -29 years*
- **Youth**  
*Children/Youth aged 6-21 years*

## APPLICATION PROCESS

- Application Form
- Fees
- Legislative requirements
- Meet & Greet

## HOW TO APPLY

Dependent on the timing of receipt of the application, the process should take approximately 3 weeks.

To commence the membership process, complete and return a Application Form.

Forms are available from the Club's Reception or they can be downloaded from our website **[www.rpayc.com.au/membership](http://www.rpayc.com.au/membership)**

A separate nomination form must be completed by each applicant.



## ***APPLICATION***

All adult applications must be proposed and seconded by current RPAYC members. Proposers and Seconders must have been RPAYC members themselves for at least 12 months and have known the applicant for a period of at least 12 months. If the applicant is unable to provide a proposer and or seconder, please contact membership on:

**Email:** [membership@rpayc.com.au](mailto:membership@rpayc.com.au)

**Phone:** (02) 9998 3700.

## ***JOINING AND SUBSCRIPTION FEES***

### **Joining fee**

A joining fee is payable on submission of application.

### **Annual Subscription fees**

The Club's membership billing period runs May to April each year. Pro-rata subscription fees will be rendered when the nomination is approved by the Board. Youth members pay no annual subscription under a Family membership (only the Youth Competition Support Fund).

## **House Entitlement (HE)**

The House Entitlement contribution designed to encourage members to support the Club's food and beverage facilities.

The HE is invoiced in two transactions each year (at the end of April and at the end of October).

Once paid, the HE can be used to cover food and beverage purchases that have been charged to member accounts or to put towards annual Sailfit Gym membership fees or Club run courses.

The HE expires on 30 April. If you do not make any food and beverage purchases within the year the HE is forfeited.

## **Youth Competition Support Fund (YCSF)**

The YCSF is an internal fund to assist RPAYC Youth members in their pursuit of success when representing the RPAYC at external competitions. All adult members (with the exception of Spouse and Life Members) are charged half the standard fee per annum (billed with the annual subscription fee each May). Youth members are charged the standard fee annually.

## **LEGISLATIVE REQUIREMENTS**

State laws (Registered Clubs Act) require the names and addresses of nominees to membership to be displayed on the Club's official noticeboard for 14 days.

With regard to a nominee's privacy only the suburb of residence is displayed.

## **MEET AND GREET**

Applicants will be invited to a casual meeting with a member of the Membership Committee. This meeting will assist the club to ascertain the interests/needs of the applicant in regards to their use of the Club.

The Membership Committee reviews the application and recommends it to the Board for approval. Applicants will be notified following their election.







# Royal Prince Alfred Yacht Club

## Membership Fees

01/05/2023 to 30/04/2024

Joining Fee (GST inclusive)	
Full Member	\$400.00
General Member & General Intermediate Member	\$250.00
Youth Member	Nil

Annual Subscription (GST inclusive)				
Membership Category	Subscription	+ House Entitlement*	+ YCSF **	Total
Full (boat owner)	\$1,673.00	\$220.00	\$30.00	\$1,923.00
General (non-boat owner)	\$669.00	\$220.00	\$30.00	\$ 919.00
General Intermediate (27-29)	\$502.00	N/A	\$30.00	\$ 532.00
General Intermediate (22-26)	\$335.00	N/A	\$30.00	\$ 365.00
Youth (6 to 22)	\$167.00	N/A	\$60.00	\$ 227.00

Family Membership Packages
Family Membership Packages are available with Full or General Membership (Spouse additional \$167 / Youths no additional charge)
For more information on RPAYC Family Membership packages, please contact our Membership Coordinator on 02 9998 3705 or 9998 3700 or email: <a href="mailto:membership@rpayc.com.au">membership@rpayc.com.au</a>

*House Entitlement and **Youth Competition Support Fund (YCSF) Explained
The <b>House Entitlement</b> (HE) can be redeemed through eligible purchases charged to a member's account, such as food and beverage, Club run sail training courses and the Sailfit Gym membership. \$110 is invoiced in April and October each year. The HE expires on 30 April each year. Any unused funds on an account are forfeited.
The <b>Youth Competition Support Fund</b> is an internal fund to aid RPAYC Youth members to be able to represent the Yacht Club at external regattas.

Sailfit Gym Membership	
Annual access fees are for the period May to April. Members are required to undertake an induction prior to using the gym.	
Full Member	\$194.00
Full Family Membership Package	\$518.00
General and Intermediate Members	\$324.00
General Family Membership Package	\$648.00
Youth Member	\$194.00

# *MEMBERSHIP BENEFITS*

---

## *MEMBER PRICES*

- Food and beverages.
- Discounted Race entry\*.
- Slipping and antifouling services in the Boatyard.
- Sail training programs for adults, youths and children.
- Club functions and other social events.
- Member function bookings.
- SailFit Fitness Centre membership\*.

## *COMPREHENSIVE SAILING PROGRAMS*

- Year-round inshore and offshore racing (Wednesdays and Saturdays), Twilight racing (Tuesdays and Thursdays through summer) and off the beach Centreboard racing.
- Club, state and national regattas.
- Extensive cruising calendar – both on and off the water with local and longer cruises.
- Youth development programs.
- Windsurfing.
- Alfred's Community Sailing Program sailing activities and support.
- Training programs for adults and youths, including Australian Sailing OutThere program for 12 - 17 year olds.
- Crew register.
- Comprehensive training for race management volunteers.



# **MEMBERSHIP BENEFITS**

## **CLUB FACILITIES**

- Car accessible parking during club visits\*.
- Marina, hardstand (with crane) and club moorings.
- Equipment storage areas.
- Tender service to member moorings (within the Club tender service area).
- Pump out facility, gas bottle refills.
- Recreational moorings in Pittwater and The Lower Hawkesbury River waterways.
- Disabled access for boat launching.
- Work berths for members to use\*.
- Laundry, showers and disabled amenities.
- Library, gym, children's playground and billiards room.
- Fully serviced boatyard with cranes and travel lift and service facilities including a chandlery, rigger, shipwright, electrician, engineer, yacht broker and marine upholsterer.

## **OTHER**

- Complimentary Australian Sailing membership.
- Member accounts billed monthly.
- Weekly E-Newsletter and Annual Yachtsman magazine.
- Birthday voucher for use at Halyards Bistro.
- Free Wi-Fi.
- Reciprocal arrangements with selected yacht clubs worldwide.
- Can sign in guests.

\*Conditions apply.



# RPAYC ON WATER ACTIVITIES

---

## YACHT RACING

Royal Prince Alfred Yacht Club is one of Australia's leading clubs within the sport of sailing and is regarded as one of the premier Yacht Clubs in Australia.

The Club's sailing program and activities reflect this standing and are second to none. Our yacht racing program is innovative, safe, fun and user-orientated with a varied program year round, combining inshore and offshore racing, mini regattas, class events and special Club races for the whole family. We pride ourselves on the ability to host high quality, professional events in a pristine environment.

The club's [racing calendar](#) includes club, state, national and

international events.

Members and visitors of any age or ability can enjoy the various classes, divisions, great sailing locations and competition.

Crew are a major aspect of sailing, whether new to sailing or experienced.

Crew are always welcome to join races.

**Register using the online crew register:** <https://rpayc.com.au/sailing/crew-boat-finder/> or our Facebook page 'crewatrpayc'

For more information contact the Sailing Office on **02 9998 3761**.

**Visit:**

<https://rpayc.com.au/sailing/>







## *CRUISING*

Cruising activities are organised by the Cruising Committee for all members and their sailing friends. The Cruising Committee organises a comprehensive event schedule which includes educational evenings with expert and informative speakers, social events and sailing activities.

Inshore cruises in the Pittwater/Broken Bay/Hawkesbury area with their myriad of secluded bays, are arranged on a regular basis. A post-Christmas cruise is organised each year to a coastal destination over a period of around two weeks. Cruise planning is undertaken with the acknowledgement that cruising sailors do not venture out in unsuitable weather conditions.

Cruising in a group is not only a great way to make new friends, it also offers the less experienced sailor the added reassurance of knowing support and assistance is close by. The Cruising Committee endeavours to have something for everyone.



# RPAYC ON WATER ACTIVITIES

---

## ***CENTREBOARD RACING***

Centreboard racing is conducted on Sundays over the summer months with the Winter series commencing in May. RPAYC's Centreboard Division welcomes all classes to join in.

Although RPAYC dinghy sailors have a long history of success at state, national and international levels; it's not all about medals, glory and international recognition. It's about having fun in a supportive environment that allows kids, youths and adults alike to meet and form an active family based community.

Using supported international dinghy classes, parents and kids can race alongside one another and can take their sailing to whatever level they desire. The natural progression from class to class that exists at RPAYC allows for a seamless transition from dinghy into keelboat sailing later on.

Contact the Sailing Office for more information:

**Phone:** (02) 9998 3771

**Email:** [sailing@rpayc.com.au](mailto:sailing@rpayc.com.au)

**Visit:** <https://rpayc.com.au/sailing/>

















# SAIL TRAINING

---

Royal Prince Alfred Yacht Club provides the largest Sailing School on Pittwater offering accredited Australian Sailing (AS) courses.

Alfred's sail training seeks to help you achieve your sailing goals and gain confidence on the water, whether you are Grand Prix racing or cruising up the coast. Offering options for kids through to adults, dinghies through to yachts, and

high-performance racing to first aid and sea safety, we can help you develop whatever skills you need.

We specialise in the delivery of courses for all ages from beginner sailors/new boat owners, boat handling skills, class development, private sessions and shore based professional qualifications.

## Adult Learn to Sail and Development

Be introduced to sailing for the first time or develop racing and spinnaker skills on the Club's fleet of Elliott 7s.

- 5 levels following the Australian Sailing recognised syllabus
- Private coaching sessions available
- Fully qualified instructors and coaches





## Kid & Teens Learn to Sail for 7 – 12 | 13 - 16 year olds



- Fun, games-based learning environment
- All safety equipment and boats provided
- Fully qualified instructors
- Safety boats that meet national best practice
- Courses in the holidays, and during school term

### Accreditation and Courses

- First aid qualifications
- VHF radio licencing
- Sea safety coaching (including the SSSC)
- Comprehensive navigation courses
- Private coaching sessions on your own boat



### School Sailing



- High School learn to sail
- High School teams racing
- Primary School learn to sail
- Interschool teams racing events
- School Sports Boat training

For more information contact the Sailing Office:

**Phone:** (02) 9998 3771

**Email:** [sailtraining@rpayc.com.au](mailto:sailtraining@rpayc.com.au)

# WATERFRONT FACILITIES

---

RPAYC is proud to have been the first club in the world awarded the prestigious **5 Gold Anchor accreditation** and continues to maintain this industry accreditation which acknowledges the Club's commitment to high quality service, safety and environmental best practice.

RPAYC also holds a **Level 3 Clean Marina and Fish Friendly accreditation**.

As a facility holder we will keep you well informed and you will receive regular communication from the Club and the Waterfront Team. We will ensure that you are able to store your vessel with confidence and that your sailing experience is made easy.

- Berthing assistance
- 7 day (on demand) tender service
- Services wharf – water, power, pump out and LPG gas
- Free Club Race Entry for full members
- 24hr CCTV surveillance and after hours security
- Modern amenities

RPAYC is an ideal base to race and cruise from or to explore the pristine waterways of Pittwater.

We invite you to inspect the facilities and the Lower Hawkesbury and learn about the benefits of club membership.





## *VESSEL STORAGE OPTIONS*

### **Berths**

The floating marina has 342 berths which can accommodate vessels to 30m (98') and depths up to 15m (50'). Berth fees include shore power, free shore power lead testing and water.

### **Moorings**

18 moorings located around the Club accommodating vessels up to 22m (65').

Club Moorings include a 7 day tender service and mooring maintenance.

### **Hardstands**

Two large hardstands accommodating up to 83 vessels. The hardstands provide members with an easy and safe method of storing, launching and retrieving vessels.

Centreboard storage racks and rigged storage accommodating up to 100 centreboard dinghies.

### **Recreational Moorings**

13 member only recreational moorings conveniently located at The Basin, America Bay and Refuge Bay.

### **Dinghy Racks**

30 racks available located in easy access areas.

### **Lockers**

Large storage lockers are available for the storage of vessel equipment and sails.

### **Storage Rates**

Storage fees are set annually from January.

Permanent and Casual rates for members and visitors are listed on the next page.

For more information contact:

Kylie Brown

**Phone:** (02) 9998 3741

**Email:** [waterfront@rpayc.com.au](mailto:waterfront@rpayc.com.au)

**Visit:** <https://rpayc.com.au/marine-services/marina-storage-services/>



## ROYAL PRINCE ALFRED YACHT CLUB STORAGE RATES 2023

Club Members receive highly competitive casual and permanent storage rates, join the Club and take advantage of the many benefits of RPAYC Membership!

### CASUAL STORAGE RATES

		<u>Nightly</u>		<u>Monthly</u>	
	Actual Length	Non-Member	Member	Non-Member	Member
<b>BERTH</b>	up to 40ft	\$70	\$52.50	\$1627	\$1,120
	41ft – 50ft	\$85	\$62	\$1,976	\$1,482
	51ft – 60ft	\$95	\$72	\$2,208	\$1,756
	61ft + 70ft	\$120	\$105	\$2,500	\$1,875
	'T' Head (full occupancy)	\$150	\$112	\$3,487	\$2,615
<b>MOORING</b>	up to 40ft	\$54	\$42	\$1,130	\$821
	41ft – 50ft	\$59	\$46	\$1,320	\$958
	51ft – 60ft	\$64	\$50	\$1,500	\$1,070
<b>OTHER</b>	Hardstand or	\$25.25	\$20.15	\$675	\$552
	Car Park (Trailer/Boat or other)	\$25.25	\$20.15	\$675	\$552

### MEMBER PERMANENT STORAGE RATES

Charges are based on the 'Actual Length Overall' measured on arrival

		<i>Per Foot Per Month</i>	
Marina Berth		\$27.90	<i>Min Lengths apply</i>
Commuter Berth		\$32.20	<i>Min. 20'</i>
Marina Berth T heads	full / half occupancy	\$55.80/\$41.85	
Multi-Hull Berth		\$41.85	<i>Min. 40'</i>
Mooring		\$15.50	<i>Min. 30'</i>
Green Point Hardstand		\$16.25	
Crystal Bay Hardstand		\$15.80	
		<i>Per Month</i>	
OTB Crystal Bay Hardstand	(designated storage positions only)	\$74.05	
Kayak Rack Crystal Bay		\$22.30	
Centreboard Optimist Rack	ground, first Level / top	\$40.45/\$33.65	
Centreboard General Rack	ground, first level / top	\$47.20/\$40.45	
Centreboard Rigged Lawn	(vessels entered Centreboard season only)	\$74.05	
Centreboard Rigged Storage	(non participating)	\$100	
Windsurfer Rack	(windsurfer board only, one board per rack)	\$33.50	
Tender dinghy/Rib Rack	berth holder/non	\$45.95 / \$75.60	
Locker Standard / Large		\$75.60/ \$87.15	
Hardstand Locker		\$64.70	

\* All Charges are inclusive of GST \* "Actual Length Overall" is the maximum length of a vessel measured parallel to the waterline and includes all appendages to the hull such as rudders, bowsprits, davits and dinghies, protruding equipment such as anchors and spars and any allowance for a folding transom. \* Club will charge an admin fee for unauthorized storage at \$50 per incidence\* Insurance required \* Non-member fees payable in advance, cheques not accepted and T&C's apply, \*all credit card payments incur 1% surcharge.



# BOATYARD SERVICES

---

## VESSEL SERVICING

Housing a 50 tonne travel lift, the Boatyard has an industry leading reputation, specialising in being a 'one stop shop'. What separates us from other yards?

- We professionally spray (not roll) for a superior finish and longer lasting result.
- Two coats of antifoul and a third around the leading edges.
- A water blast and hard wet rub is included with all antifoul packages.
- Complimentary light acid wash on the topsides.
- Complimentary deck wash after completion.
- Punctuality and we work with our onsite tenants to complete the schedule of service.
- The price we quote, is the price you pay.

The Boatyard offers a pick up/delivery service for boats stored on Club facilities for all antifoul services.

For more information contact:

Joe Schreiner, Boatyard Operations Manager

Phone: (02) 9998 3751

Email: [boatyard@rpayc.com.au](mailto:boatyard@rpayc.com.au)

Visit: <https://rpayc.com.au/marine-services/boatyard-services/>



# FOOD AND BEVERAGE

---

**Halyards Bistro and Bar** has beautiful water views and it is the sailors meeting place prior to and after racing.

We are open seven days a week, with breakfast each weekend, lunch daily and dinner Thursday through Saturday, or drop in for a beverage and enjoy the sunset.

Enjoy our seasonal menu with chef specials on our blackboard, in addition to our weekly dinner specials. To ensure a table book through Reception.

Takeaway menu also available.

Visit: <https://rpayc.com.au/functions-dining/>

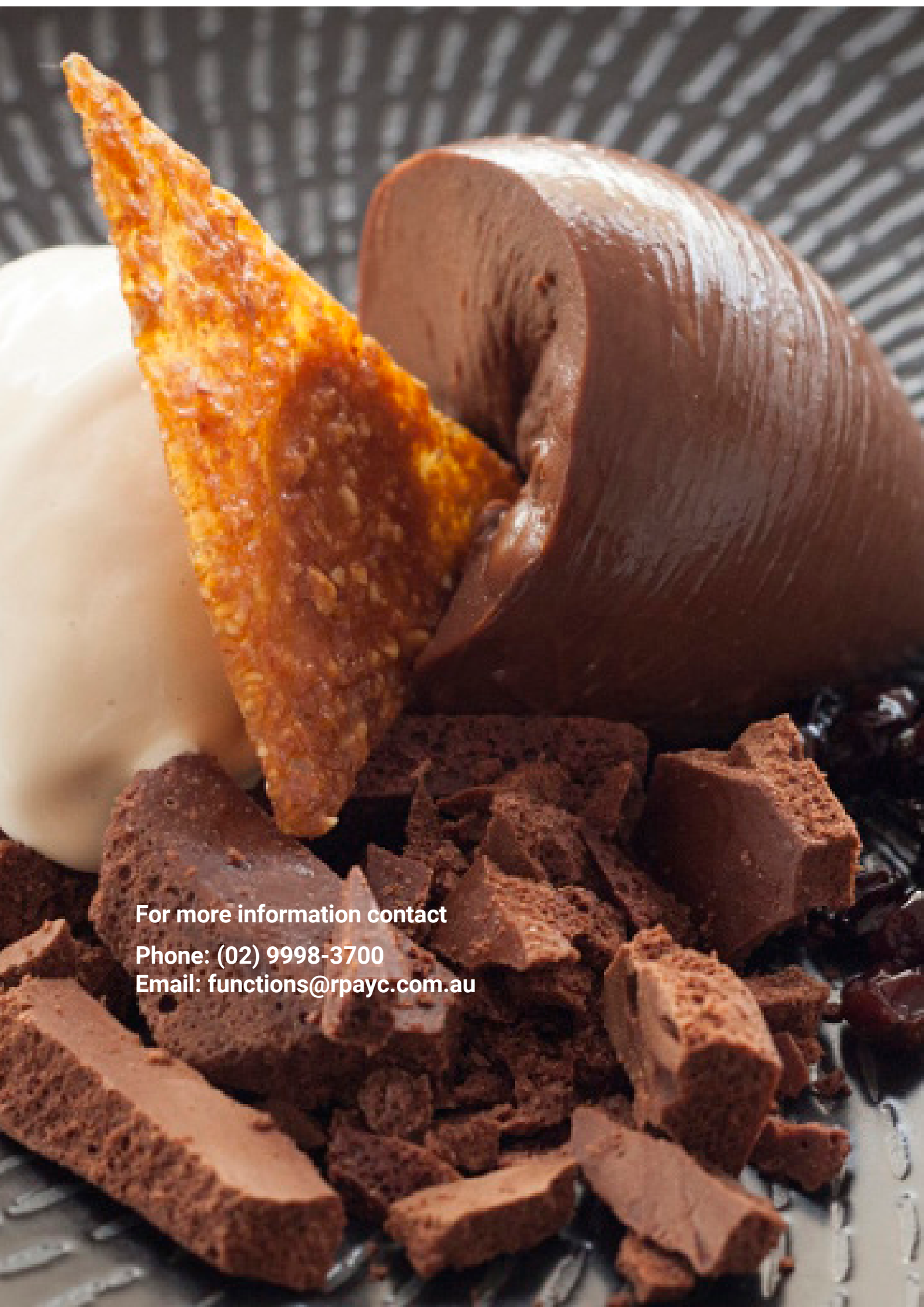
## **Admirals Cup Room/Pittwater Room/Edinburgh Bar**

Available for functions hire.

Trading Hours (vary according to season and trade, check the website for updated times).







**For more information contact**

**Phone: (02) 9998-3700**

**Email: [functions@rpayc.com.au](mailto:functions@rpayc.com.au)**

# SAILFIT GYMNASIUM

---

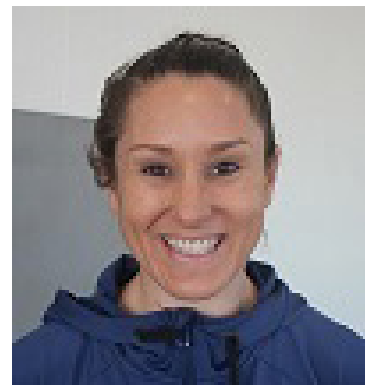
The focus of Sailfit is to create an environment that is welcoming and results driven whether your objective is general fitness, sailing related or weight loss. Members may use the facility independently, engage a personal trainer or join a class.



## MEET THE TRAINERS

### **Tana Anderson – Sailfit Supervisor**

With 15 years' experience in strength training, 8 years in the health and fitness industry including 2 years as a business owner and 15 years playing tennis at an elite level, Tana brings a wealth of knowledge and experience to her training. Tana's passion lies in educating her clients on a holistic and healthy view of health and showing them a nutrition and exercise program to suit their specific needs that is fun, rewarding and sustainable. She loves nothing more than pushing her clients to achieve amazing results they never thought possible, whether that's finally being able to touch their toes, running a marathon or losing 10kg.



For more information contact:

Tana on 0478 034 659 or

Email: [tana.anderson@rpayc.com.au](mailto:tana.anderson@rpayc.com.au)







## *SAILFIT ANNUAL ACCESS FEE*

The Sailfit annual access fee coincides with the annual subscription year May – April.

The Sailfit access fee may be offset using the House Entitlement.

### **Annual Fees:**

- Full member \$194
- Full Family \$518
- General & Intermediate members \$324
- General Family \$648
- Youth member \$194

Individuals of Family memberships may choose to join Sailfit and pay only the single member fee.

An induction is required for all members prior to using Sailfit. Please contact Tana Anderson to organise a convenient time to have your induction.

Visit: <https://rpayc.com.au/membership/gymnasium/>







**COME SAILING AT THE  
ALFRED'S TODAY**

**CHOOSE FROM WEEKLY EVENTS**  
\* TUESDAY WOMEN'S TWILIGHT'S \* WEDNESDAY RACING  
\* THURSDAY FUN TWILIGHT'S \* SATURDAY INSHORE/OFFSHORE  
\* FEATURE EVENTS & REGATTAS  
\* SUNDAY CENTREBOARD RACING & TRAINING

 **Visit the Club today:**  
The Royal Prince Alfred Yacht Club  
16 Mitala St, Newport NSW 2016  
Phone: 9998 3700  
Email: [sailing@rpayc.com.au](mailto:sailing@rpayc.com.au)  
Web: [www.rpayc.com.au/sailing](http://www.rpayc.com.au/sailing)



