



***Whitsunday Cruise 2022
Rendezvous***

May 2022 – November 2022

Agenda

Rendezvous	9:00 – 9:30
Navigation	9:30 – 10:30
Coffee Break and Discussion	10:30 – 11:00
Engine and Electrical	11:00 – 11:30
Communications	11:30 – 12:00
Provisioning, Hunting and Gathering	12:00 – 12:20
Seamanship	12:20 – 12:40
Panel Q&A and lunch	12:40 – 1:00



Whitsunday Cruise Rendezvous



DATE WINDOW	RENDEZVOUS LOCATION
26 May 2022 to 29 May 2022	Mooloolabah
9 June 2022 to 19 June 2022	Bundaberg (may include Bundaberg Town or Lady Musgrave)
23 June 2022 to 26 June 2022	Great Keppel Island
10 July 2022 to 14 July 2022	Mackay
4 August 2022 to 7 August 2022	Cid Harbour
24 August 2022 to 28 August 2022	Gloucester Passage (SICYC Rendezvous)
Note: post Gloucester Passage Rendezvous, option to continue north or remain in Whitsunday area	
29 September 2022 to 3 October 2022	Bundaberg

Rendezvous

- You need to book your own berth (email is best so you can send all the boat details).
 - Boat name, length, beam, draft, contact details
 - Download a copy of your insurance so you can email to the marina
 - Download a copy of marina map and print it out so you know where your berth is
 - If your plans change notify the marina
- Ring before arrival to confirm your berth allocation and tie up (port / starboard)
- Do not be afraid to call and ask for help
- There will be one official event during the rendezvous arranged by the rendezvous host



Mooloolaba Rendezvous (26-29 May)



Marina

<https://mooloolabamarina.com.au/>

Phone : 07 54445653

info@mooloolabamarina.com.au

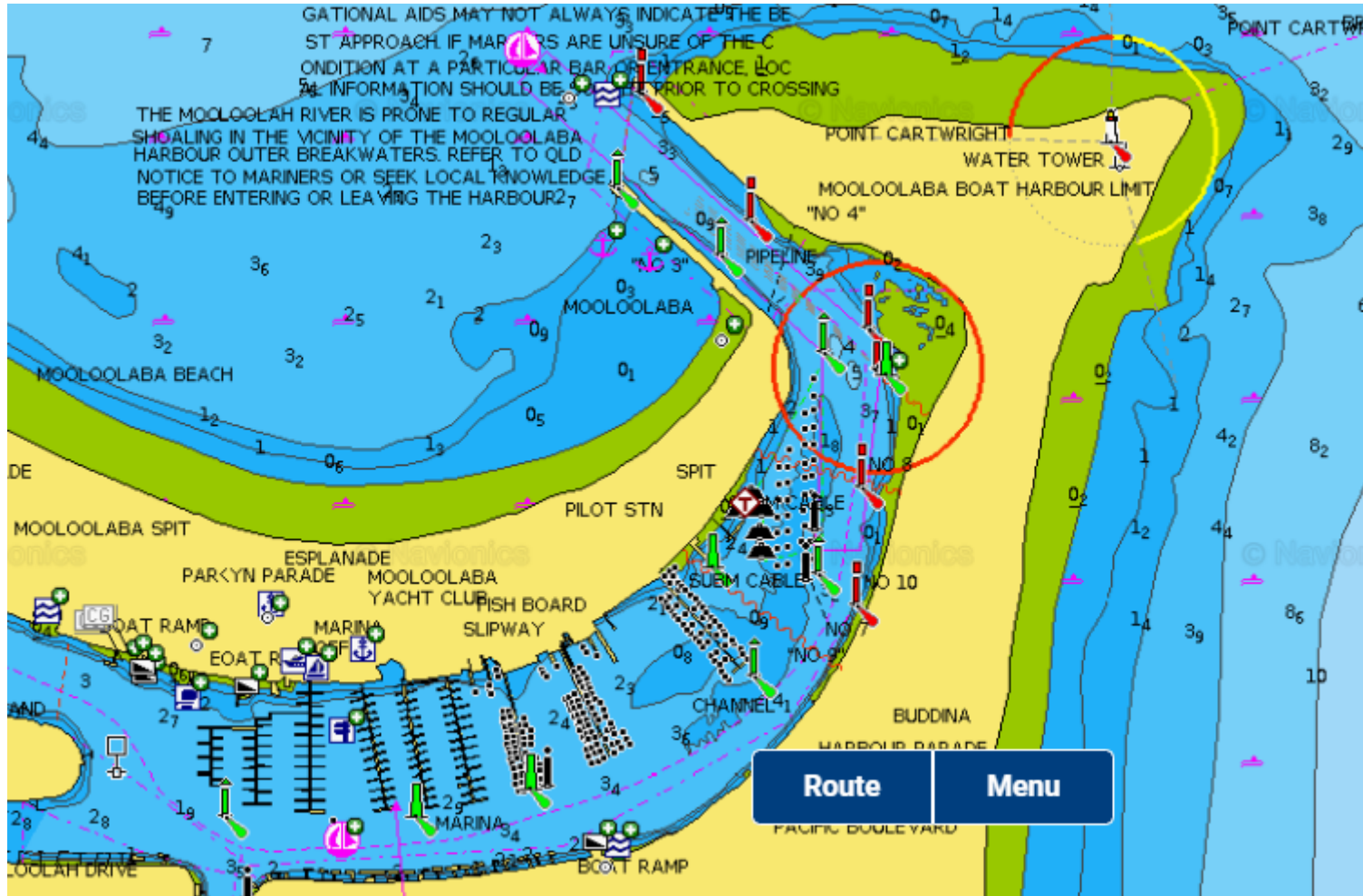
Coast Guard

QF6 Mooloolaba
65 Parkyn Parade
Mooloolaba, Queensland 4557

Phone: (07) 5444 3222



Mooloolaba Marina

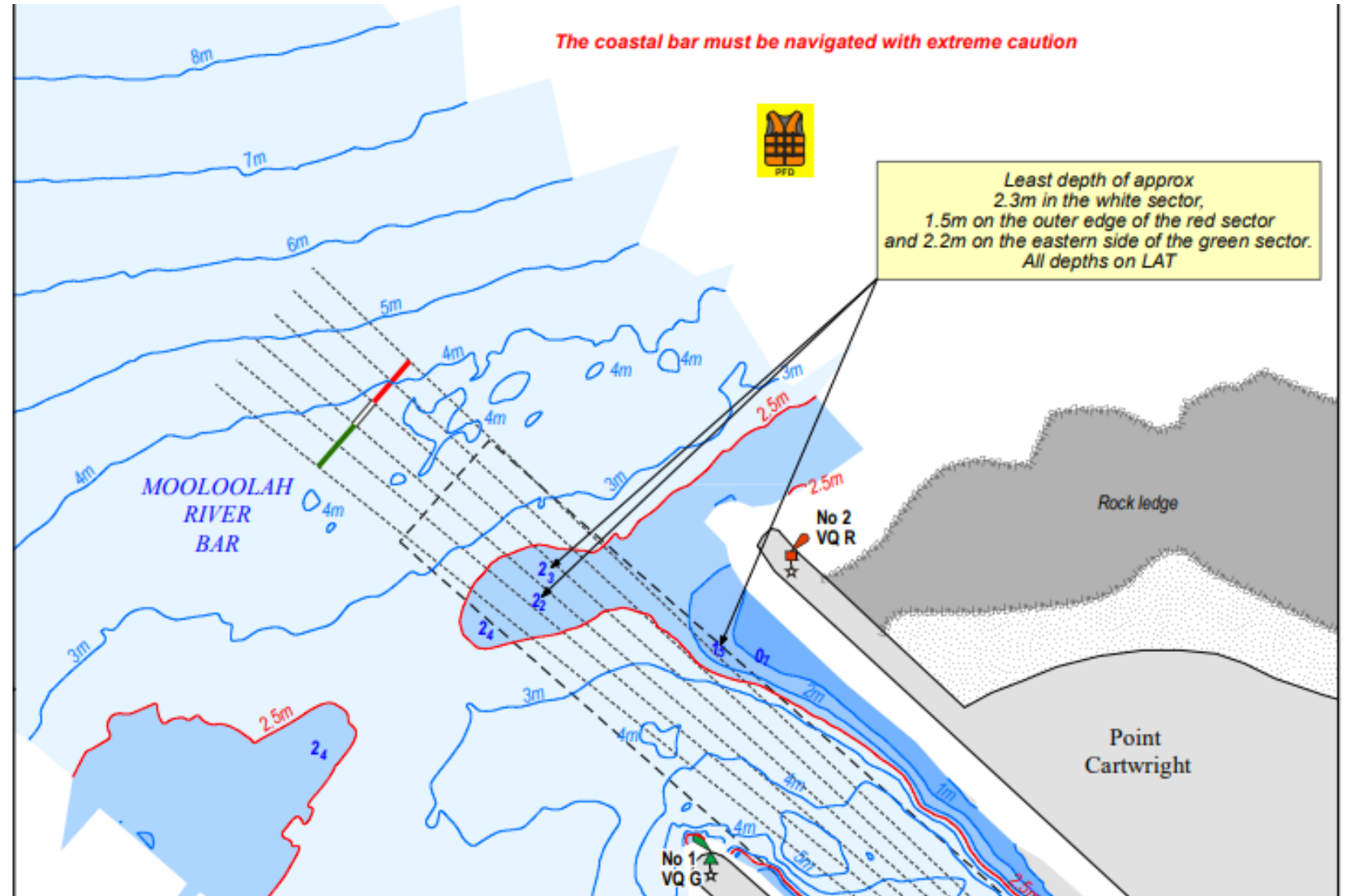


CAUTION must be exercised when navigating the entrance to the Mooloolah River at Point Cartwright. Please be aware that our position here can be subject to heavy cross-currents, so plan your entry into your berth carefully.

The Mooloolaba Dredge can provide further updates on the condition of the entrance. Contact the dredge directly on VHF Channel 73, 12 and 16, when dredging is being undertaken.

Mooloolaba Entrance

Mariners are also reminded that the Mooloolah River entrance is defined as a coastal bar. This means that each person on board an open boat less than 4.8 metres in length must wear an appropriate life jackets while the boat is crossing the coastal bar.

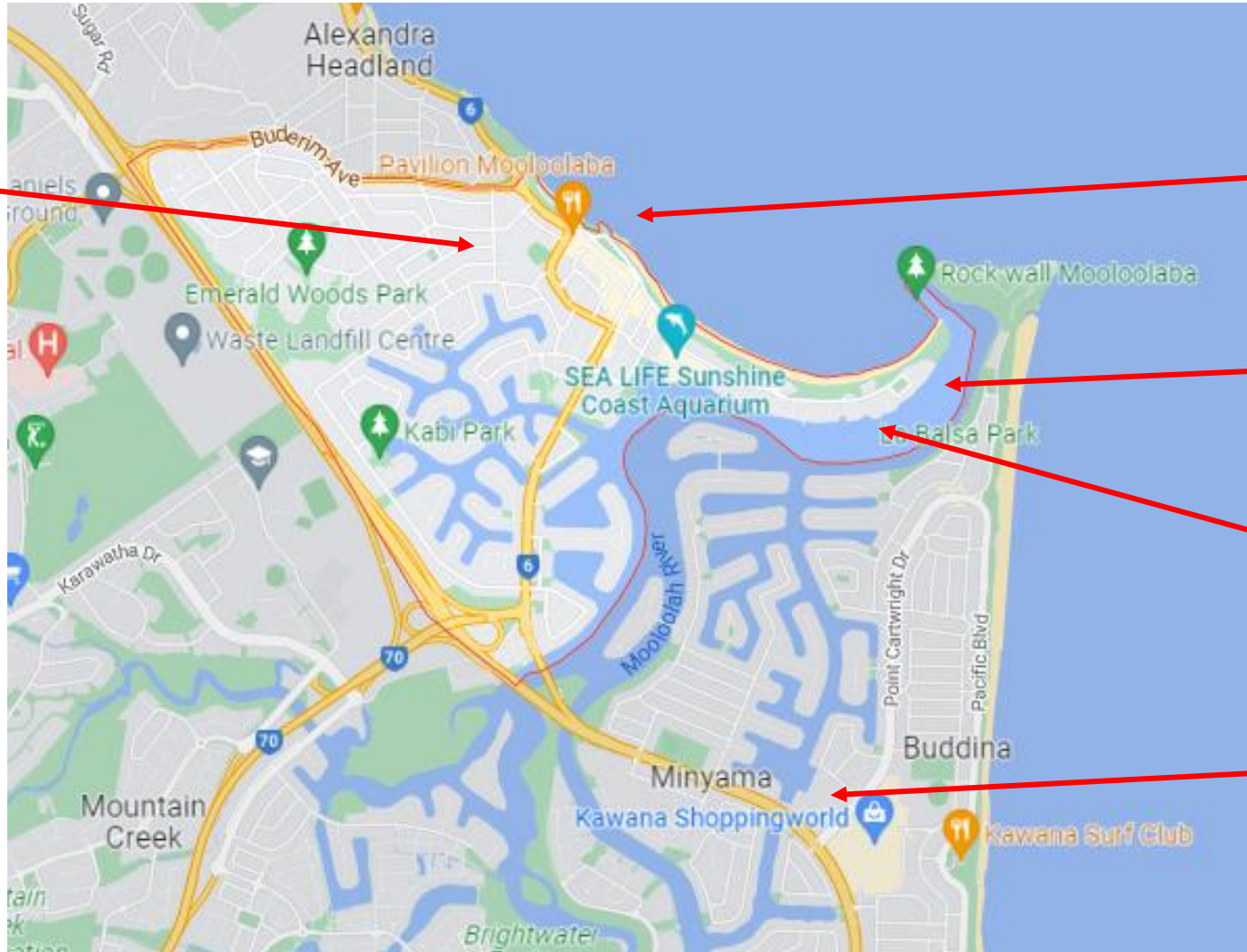


Mooloolaba Marina



Mooloolaba Location

Town Centre
(walking distance)



Surf Club – possible
rendezvous location

Fuel

Marina

Kawana Shopping Centre
accessible via dinghy (tie
up at pub and walk)



Wide Bay Bar / Fraser Island

- Crossing Wide Bay Bar is not as bad as portrayed
 - Get the latest waypoints from Tin Can Bay Coast Guard
 - It is a bar so lifejacket wearing is compulsory
 - Better not to cross in the afternoon when the sun is in your eyes
 - The optimum time for the crossing is considered to be two hours before high tide. This provides enough water over the shallow sandbars and the incoming current travels in the same direction as the prevailing south easterly swell.



Wide Bay Bar

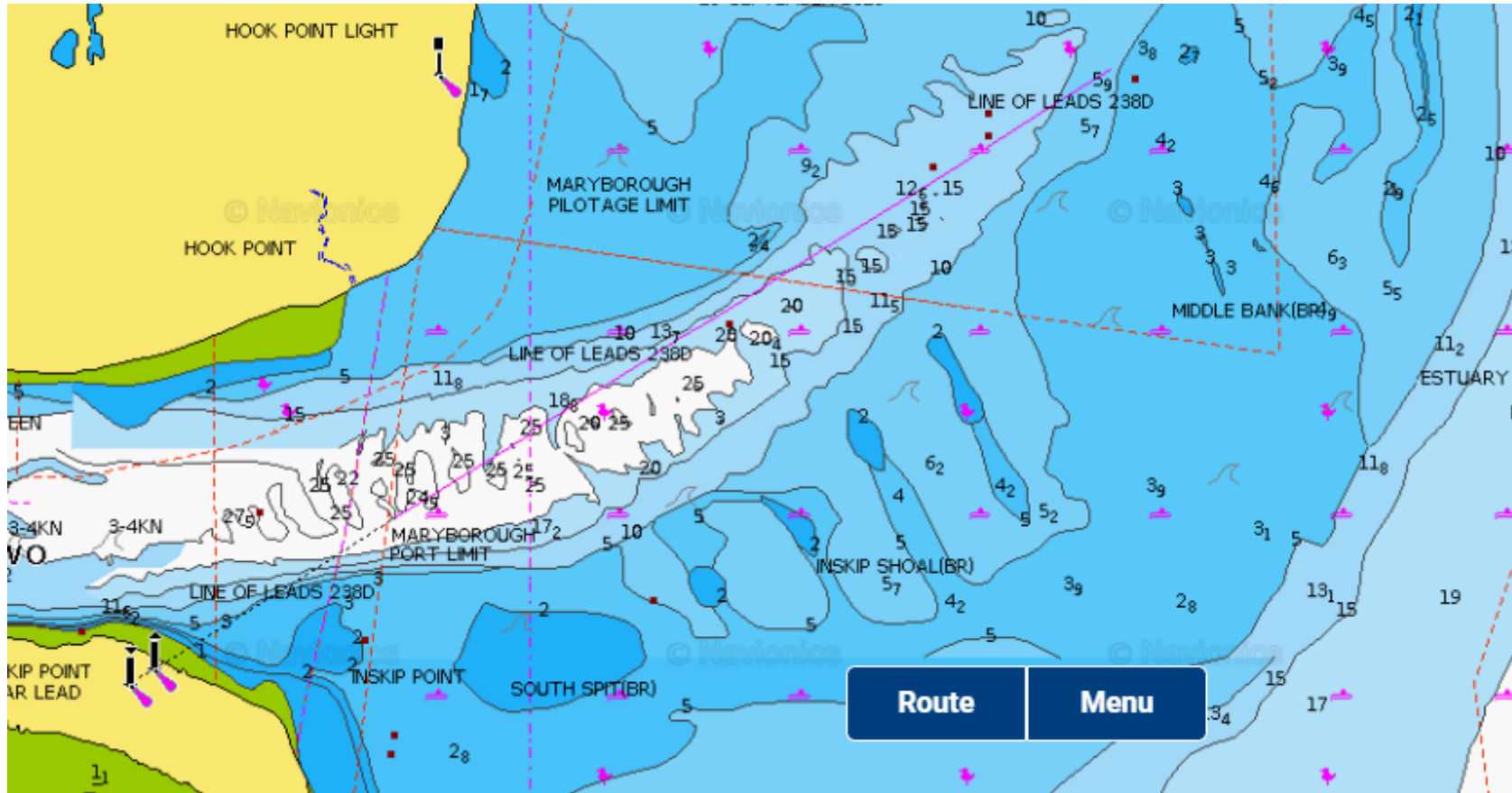


Mooloolaba to Wide Bay Bar approach approx. 50nm

Option to go directly from Mooloolaba or anchor at Rainbow Beach

Call Coast Guard Tin Can Bay for waypoints (0419798651), they will send you a text message

Wide Bay Bar



Tin Can Bay Coastguard

QF17 Tin Can Bay

Norman Point

Tin Can Bay, Queensland 4580

Australia

Phone: (07) 5486 4290

Fax: (07) 5486 4568

Mobile: 0419 798 651

OPENING HOURS / RADIO MONITORING HOURS

Weekdays: 0600 - 1800

Weekends: 0600 - 1800

FREQUENCIES MONITORED

27mhz: 88 & 90

VHF: 16, 67, 80, 82

CALL SIGN

Call Sign: VMR417

Call Sign Name: Coast Guard Tin Can Bay



Wide Bay Bar



AUSTRALIAN VOLUNTEER COAST GUARD ASSOCIATION

Incorporated in ACT, ABN 99 392 980 313
QF17 COAST GUARD TIN CAN BAY
PO Box 35, TIN CAN BAY, QLD 4580
Phone: (07) 5486 4290 / Mobile: 0419 798 651

BASE OPERATING HOURS: 0600 – 1800 DAILY RADIO FREQUENCIES
CALLING & DISTRESS: VHF 16 and 27.88 MHz, WORKING FREQUENCIES: VHF 67, 80, 82 and 27.90 MHz

WIDE BAY BAR CROSSING INFORMATION

MSQ (Gladstone Harbour) have issued a new NTM 462 of 2021 for the WBB, the characteristics of the Hook Point light have changed and the depths are correct as of the survey made on 3 December 2021. The Hook Point light is an all-round white light with the flash rate remaining at 3 seconds. The light has a range of nine nautical miles and a large trapezium day shape now marks the position. Mariners are advised to navigate the area with caution.

Mariners are advised to make an inbound crossing of the WBB from the 'E', starting at **25° 46.25' S / 153° 08' E**. This CG Reference point will be known as **CG Ref. Point 1**. Then head approx. **WSW** until you reach **CG Ref. Point 2** at **25° 46.5' S / 153° 07'E**. This track should keep your vessel in a minimum of 5m of water or deeper at high tide. From Ref. Point 2 steer to Ref. Point 3.

A sand bank is migrating 'E' from Hook Point. This may encroach onto the bearing line for the Inskip leads. At Clearance mark **CG Ref. Point 3** at **25° 47.45' S / 153° 06' E**, mariners should have a visual sighting of the Inskip leads in line.

Then steer to the **Inskip leads** at **CG Ref. Point 4** at **25° 48.2' S / 153° 04.6' E**, keeping the leads in line. Depths from CG Ref. Point 3 to Ref. Point 4 exceed 15m.

All TCB Coast Guard reference points are for guidance only, are unofficial and are **not issued by MSQ**. Ultimately, a vessel's master is responsible for deciding to undertake a crossing of the WBB, using the NTM 462 of 2021.

All navigation information for crossing the WBB should be plotted on your navigation equipment **before** you attempt to cross the WBB. It is recommended that the Bar is crossed only at slack water High tide. **Mariners are always advised that you cross the WBB at your own risk.**

Paper charts, including BEACON TO BEACON, for the WBB crossing are out of date and should **NOT** be used. AUS 240 was updated in 2019 to survey; depths may be incorrect. It is always prudent to log on with TCB Coast Guard on VHF 80 or VHF 16 to request the latest bar conditions or phone 5486 4290 between 0600 -1800 daily.

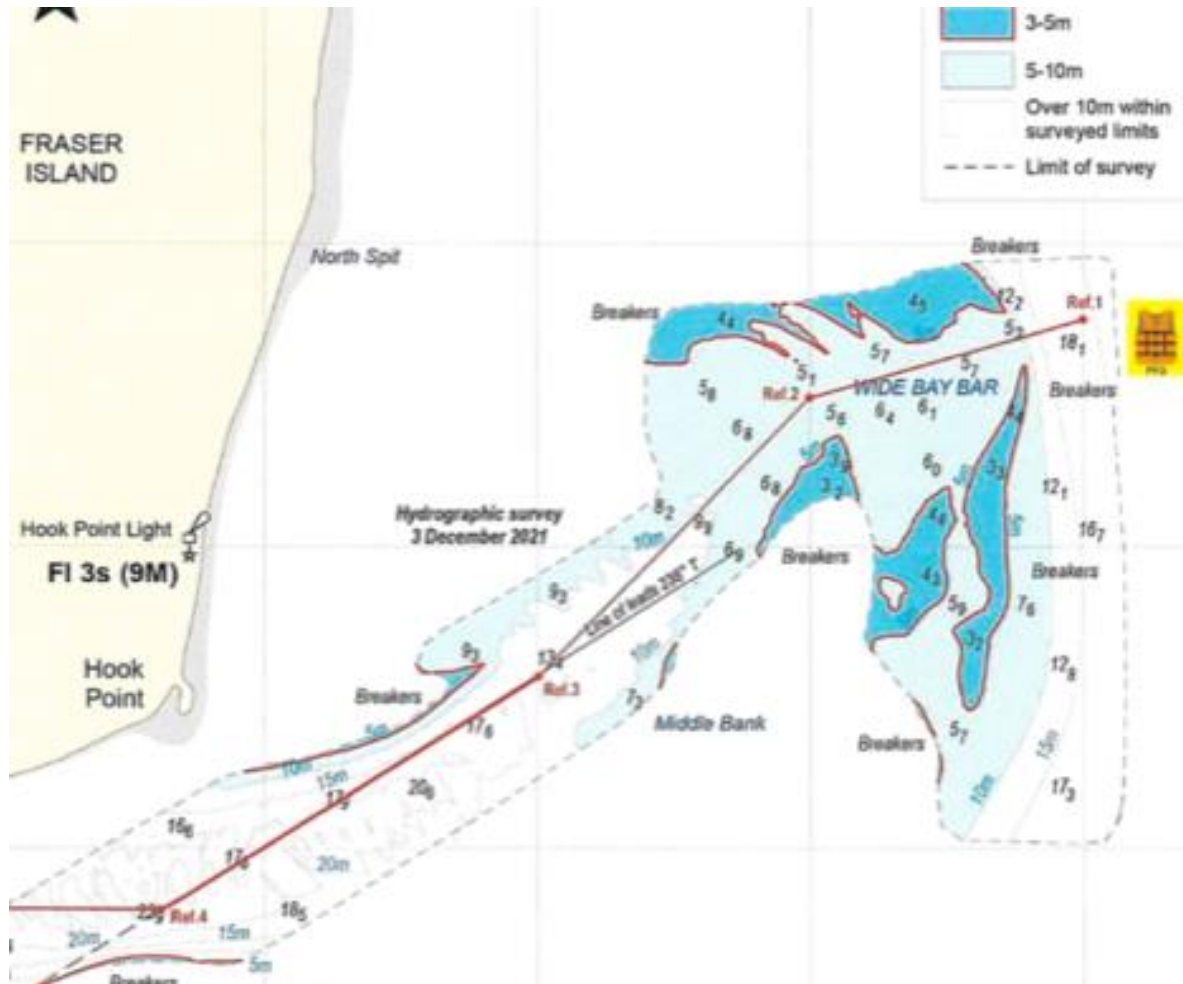
Mariners must be mindful that you may not always see the Hook Point Day shape from seaward in overcast or raining conditions.

SAFETY BY ALL MEANS: IT IS RECOMMENDED THAT ALL PERSONS ON BOARD VESSELS CROSSING THE WIDE BAY BAR WEAR LIFE JACKETS DURING CROSSINGS. IT IS COMPULSORY FOR PERSONS IN OPEN BOATS UNDER 4.8M TO WEAR A LIFE JACKET WHEN CROSSING THE WIDE BAY BAR.

CURRENT: 25/12/2021 | AUTHORITY: COMMANDER QF1:



Way Points for Wide Bay Bar

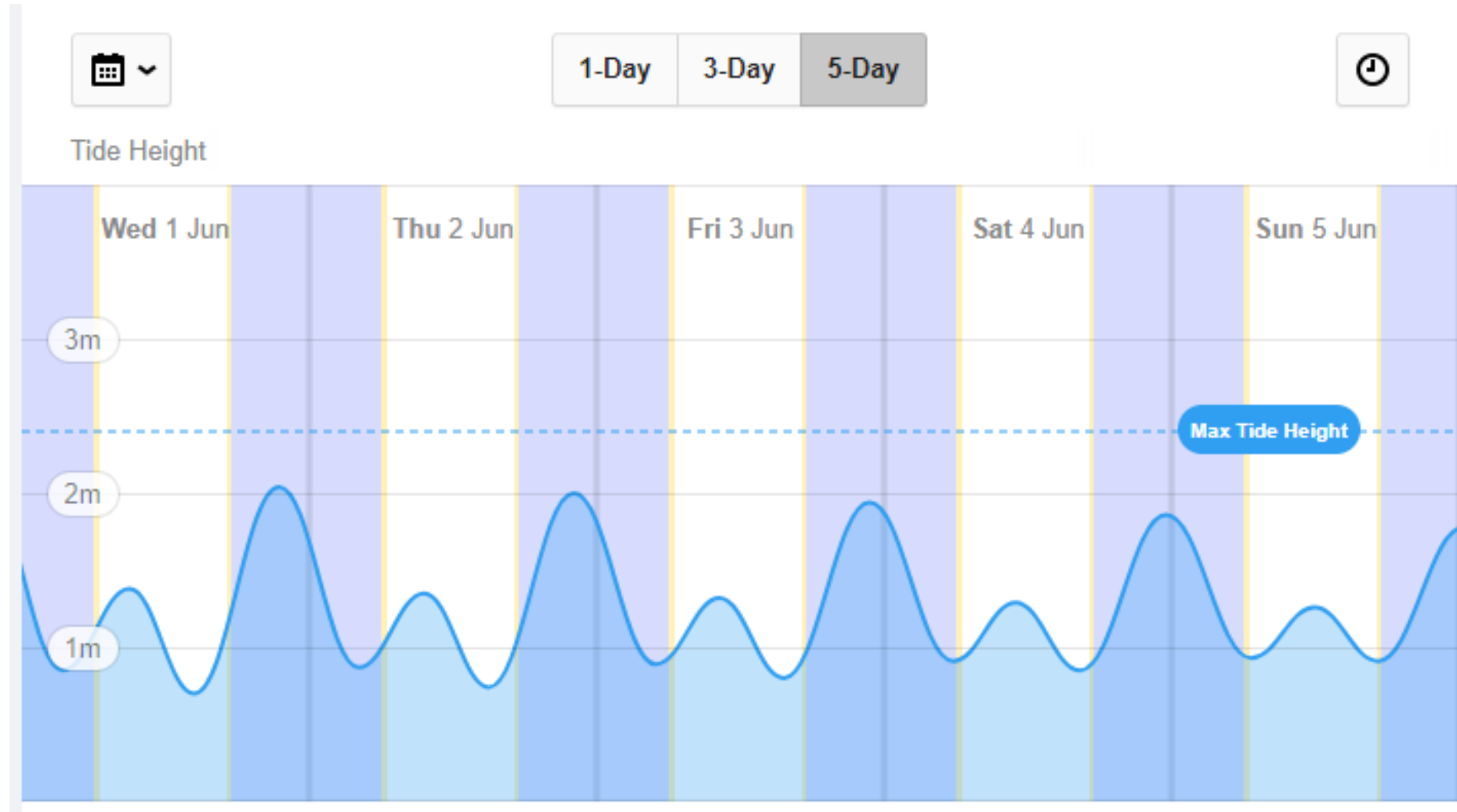


**"UNOFFICIAL" COAST GUARD
REFERENCE POINTS**
Derived from MSQ NtM 462 of 2021
CHART NOT FOR NAVIGATION
REF. POINT 1: 25° 46.25' S / 153° 08' E
REF. POINT 2: 25° 46.5' S / 153° 07' E
REF. POINT 3: 25° 47.45' S / 153° 06' E
REF. POINT 4: 25° 48.2' S / 153° 04.6' E

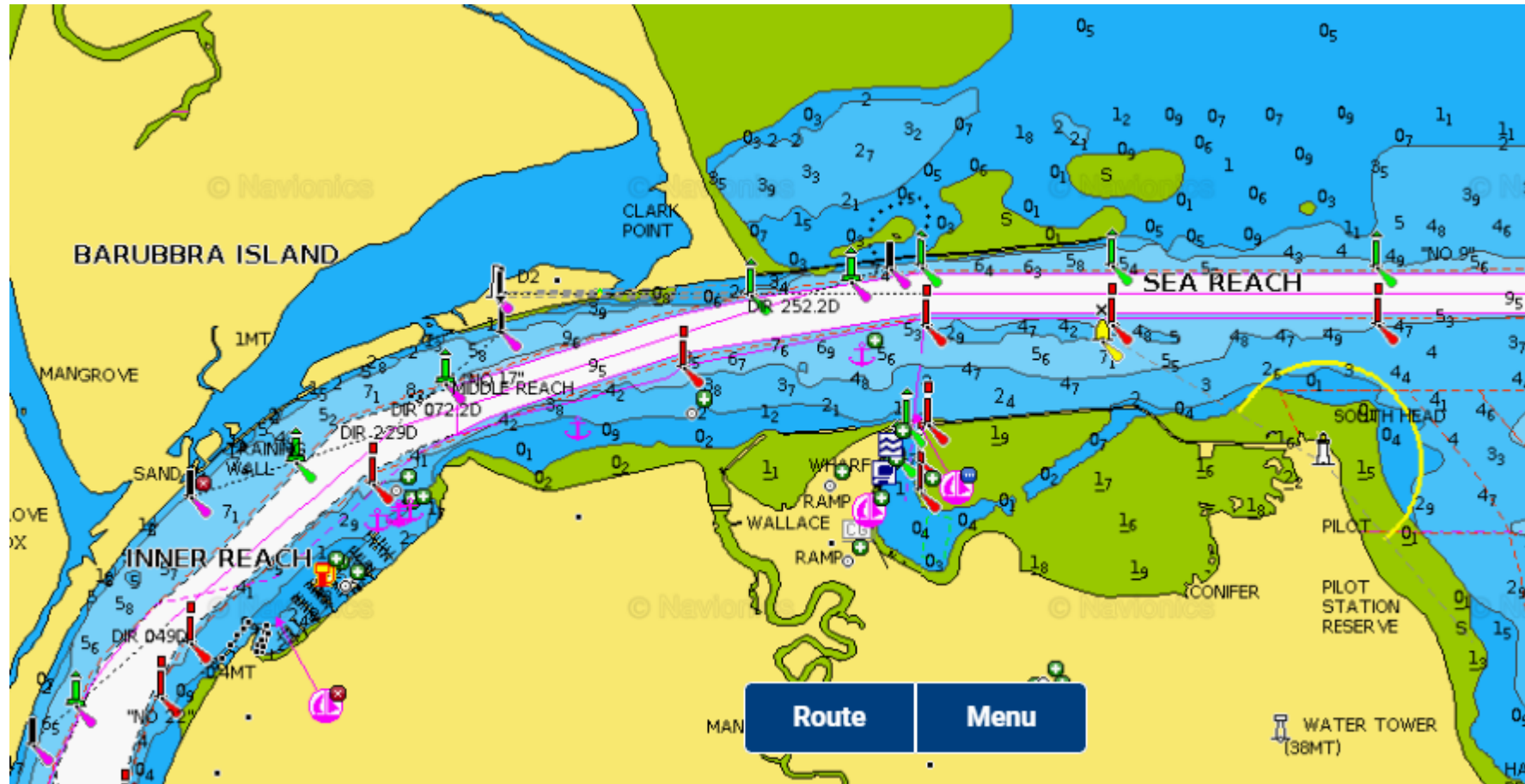
Use the ones from the Coast Guard NOT the ones on your chart plotter



Wide Bay Tides



Bundaberg Rendezvous (9-19 June)

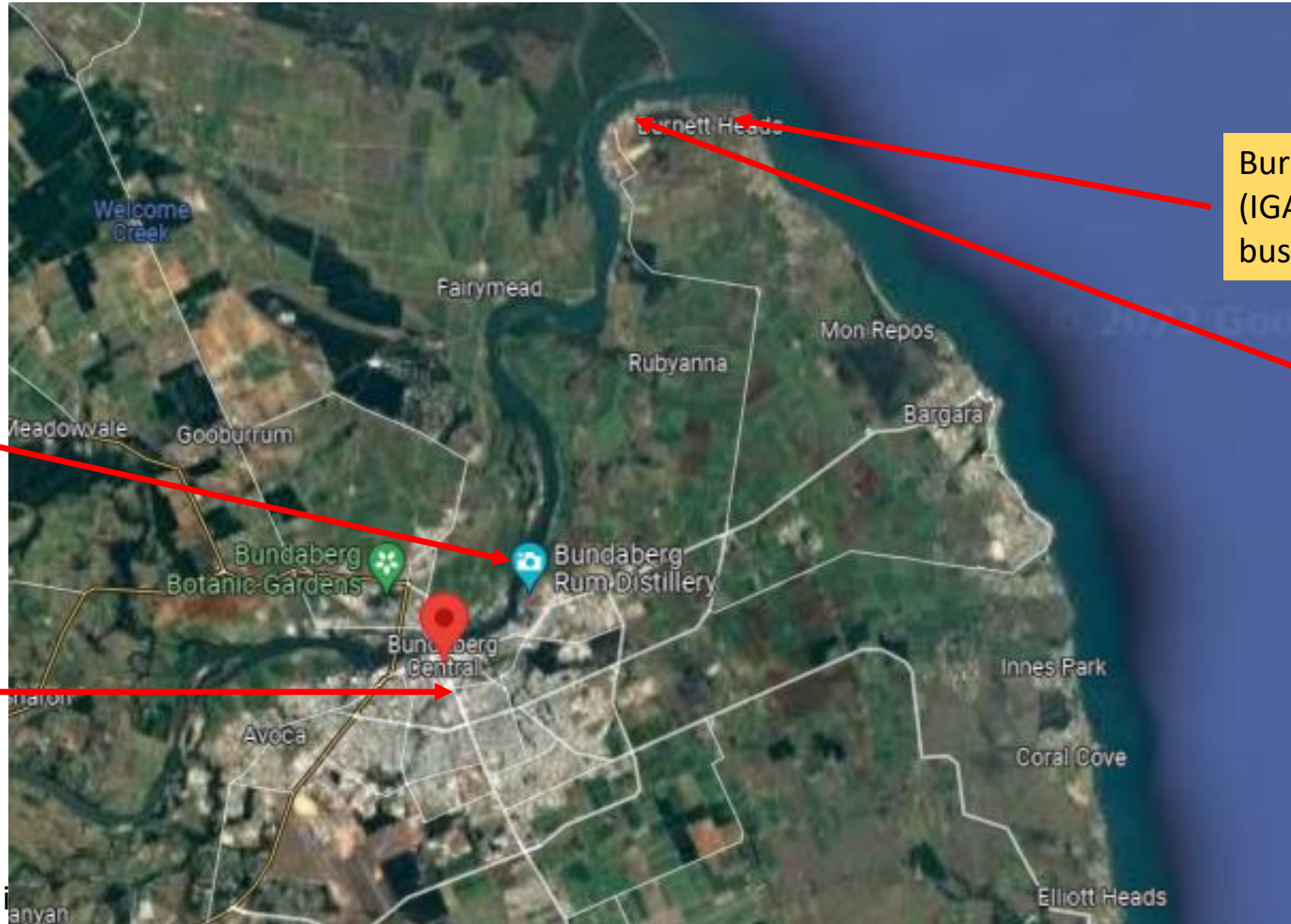


- Fuel available
- Restaurant
- Chandlery
- Bus into town
- IGA at Burnett Heads provides complimentary shuttle
- Anchoring in the river is also possible

Bundaberg Marina



Bundaberg



Supplies

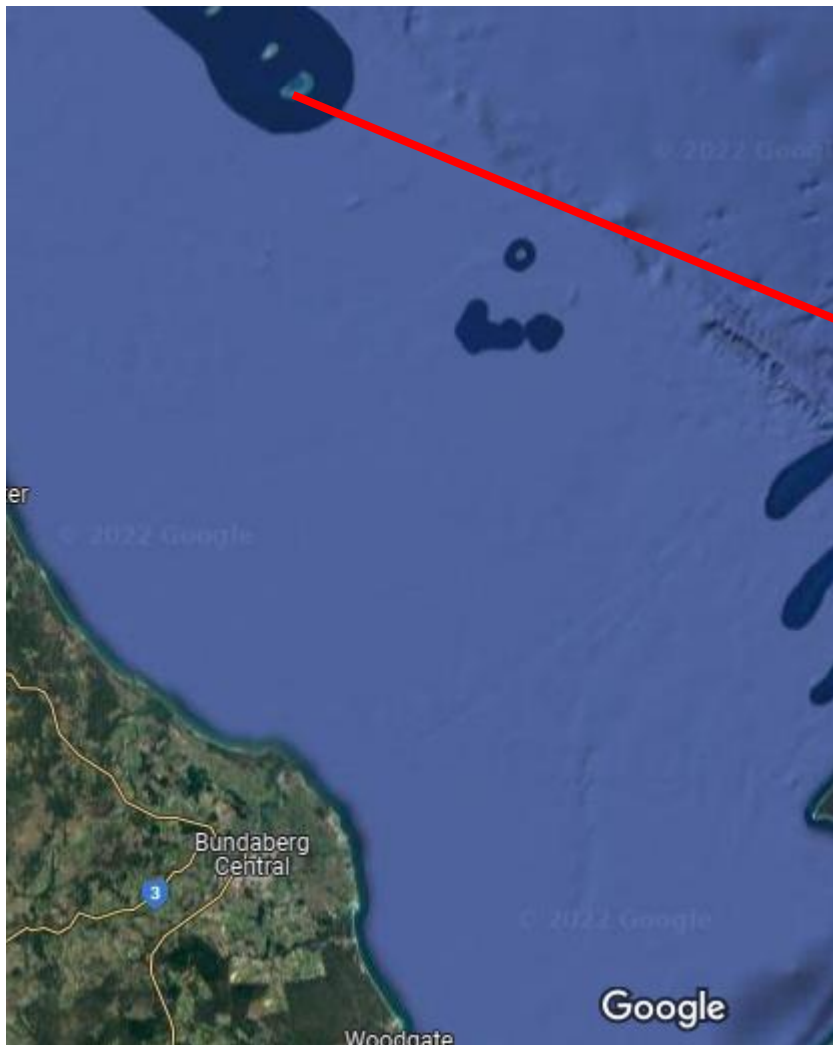
Burnett Heads (IGA) with courtesy bus

Marina

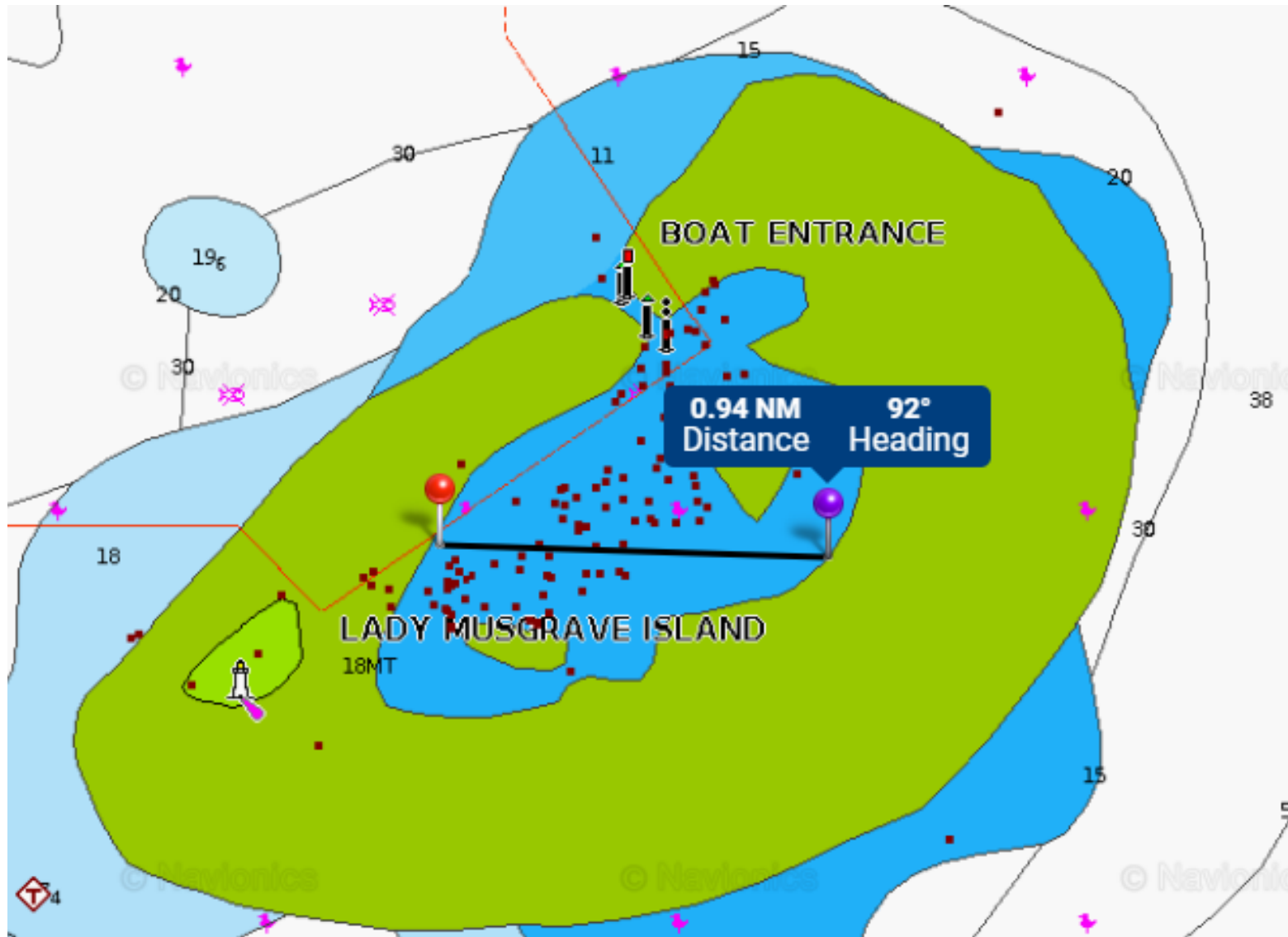
Town Centre



Lady Musgrave Island



Lady Musgrave Island



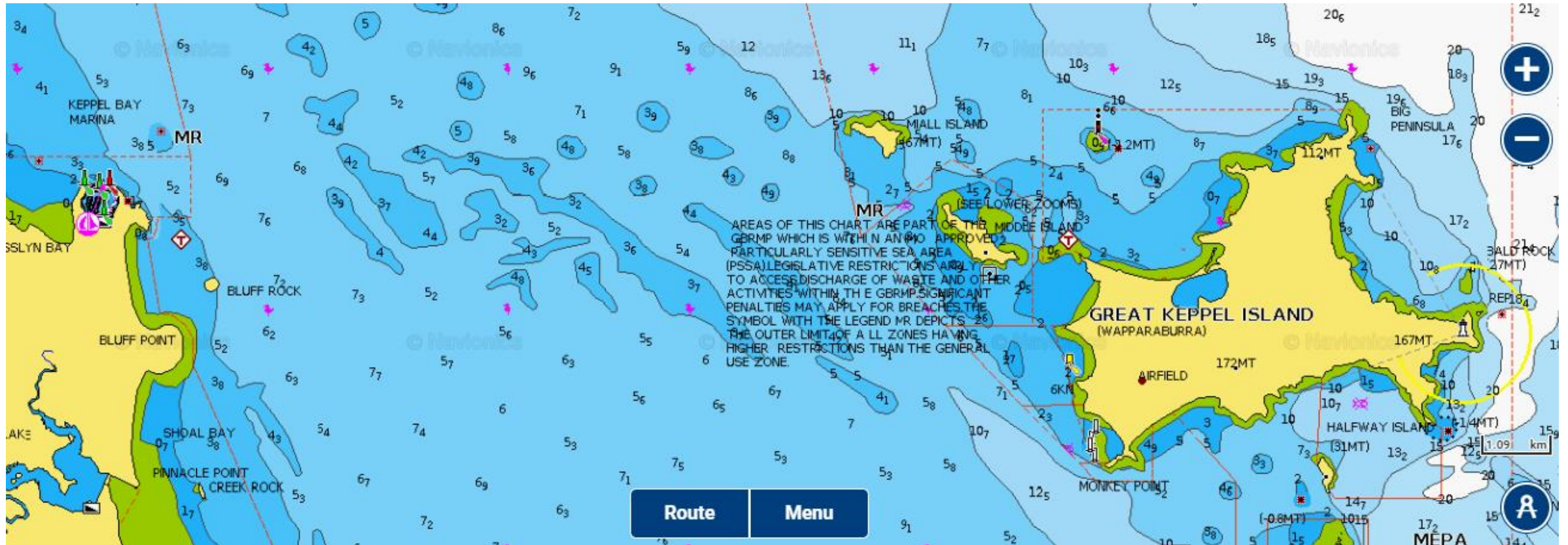
- Entrance is narrow but well marked
- Lagoon is big – plenty of room
- Beware of bommies when anchoring

Great Keppel Island

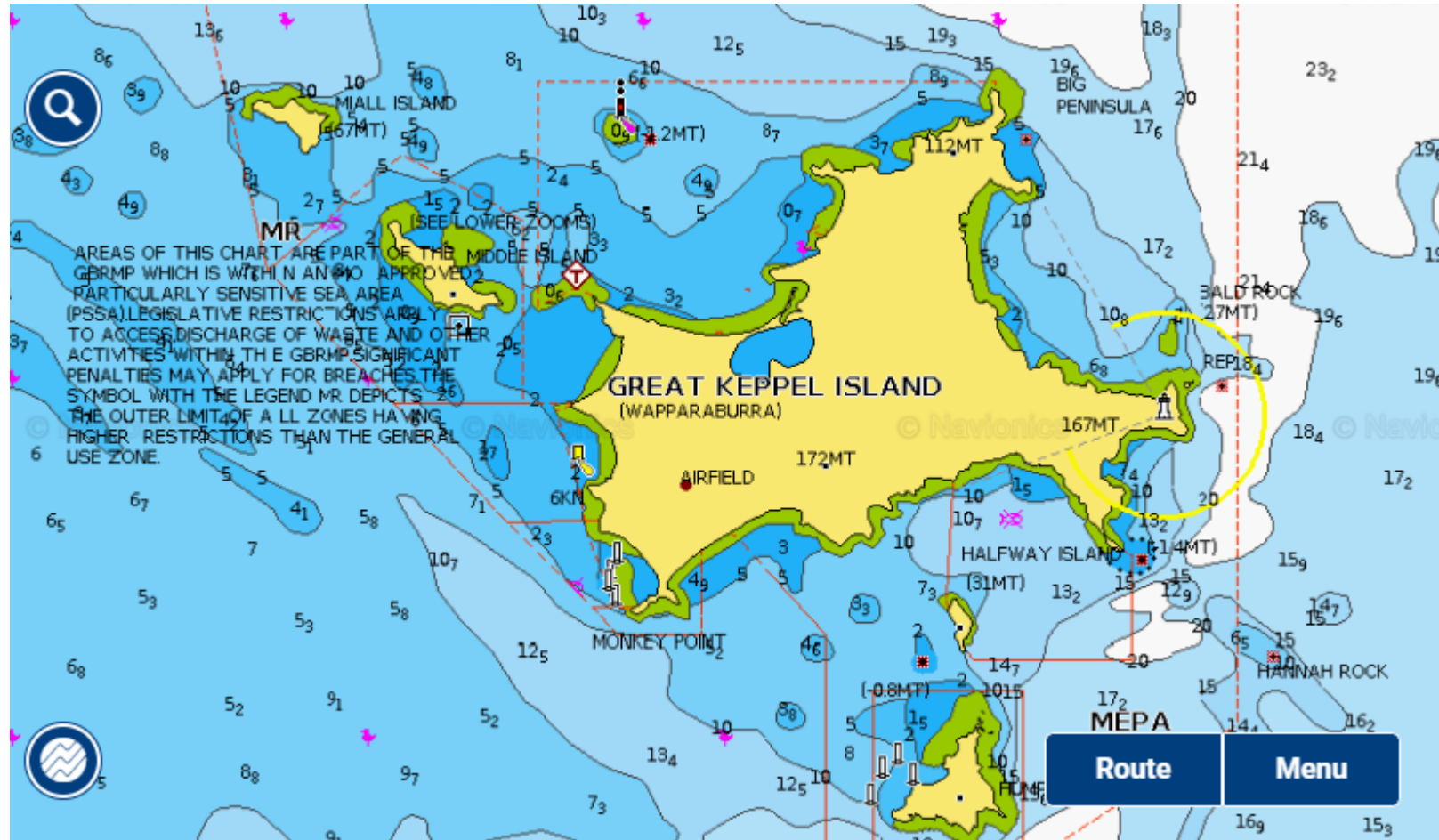


- Rendezvous is at the island, actual location weather dependent
- Rosslyn Bay Marina option before or after for refuelling, supplies etc

Great Keppel Island



Great Keppel Island



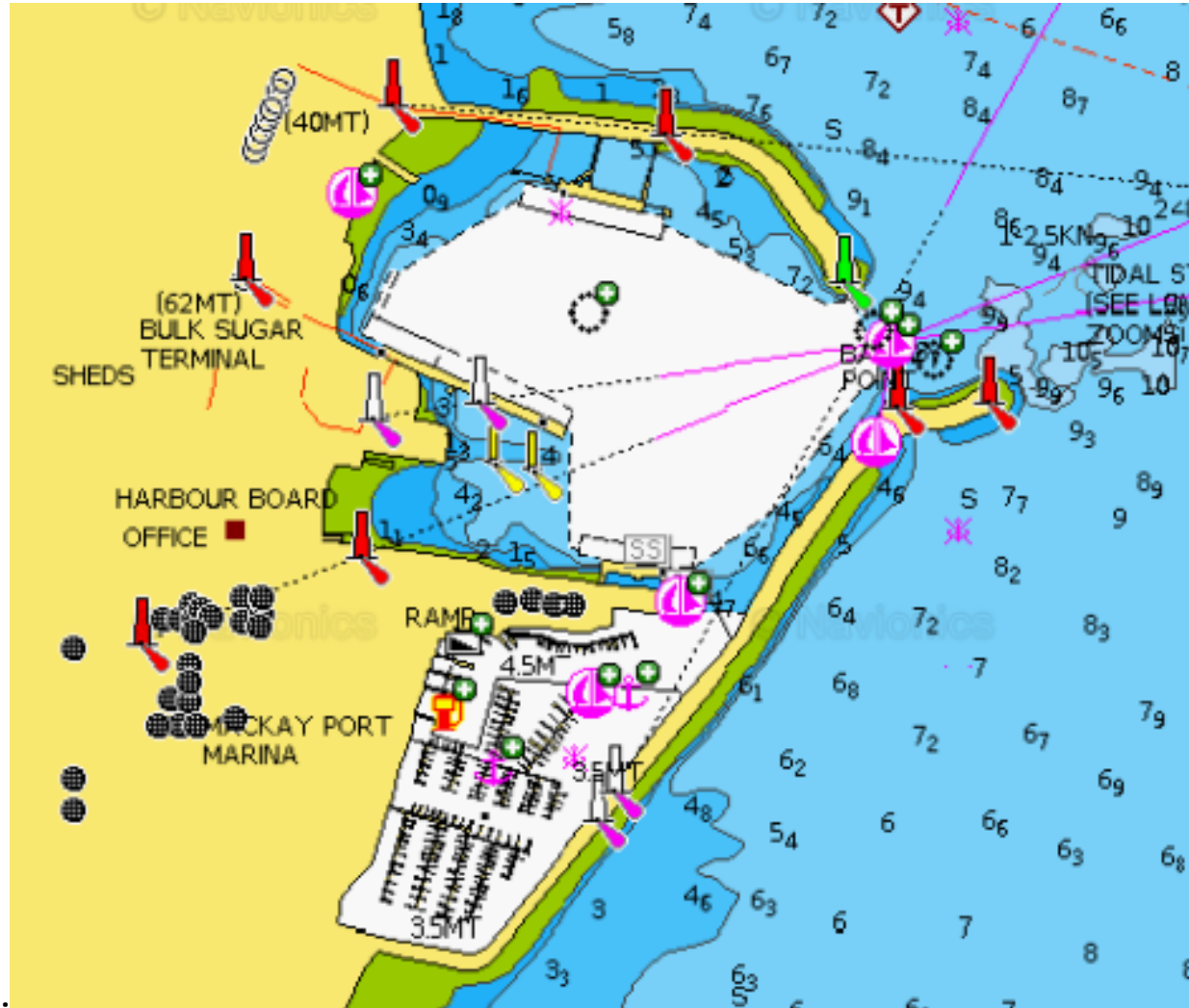
Mackay Marina



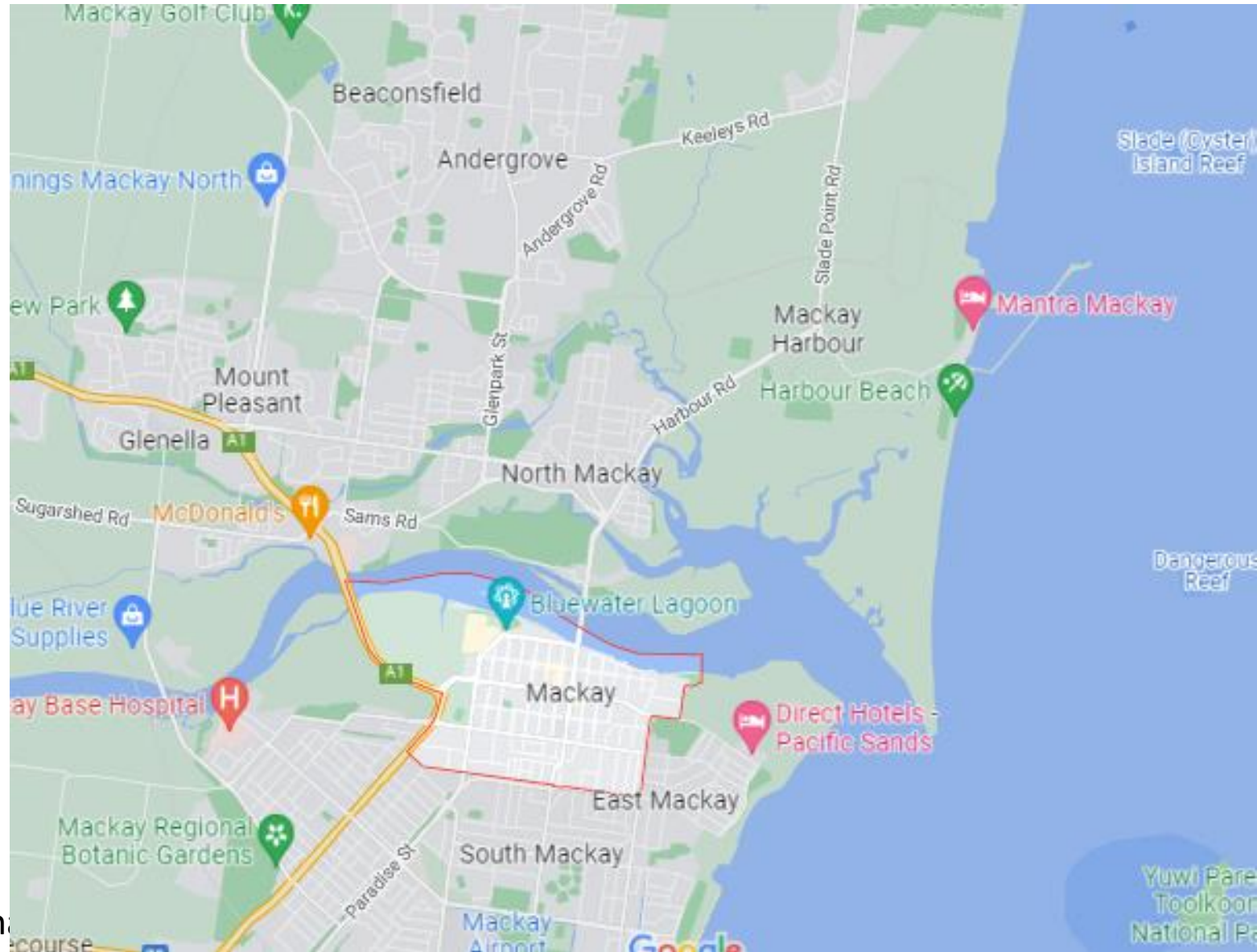
Do not go here

- Fuel and restaurants on site
- Bus into town
- Chandlery
- Can have parcels delivered to the office

Mackay Marina



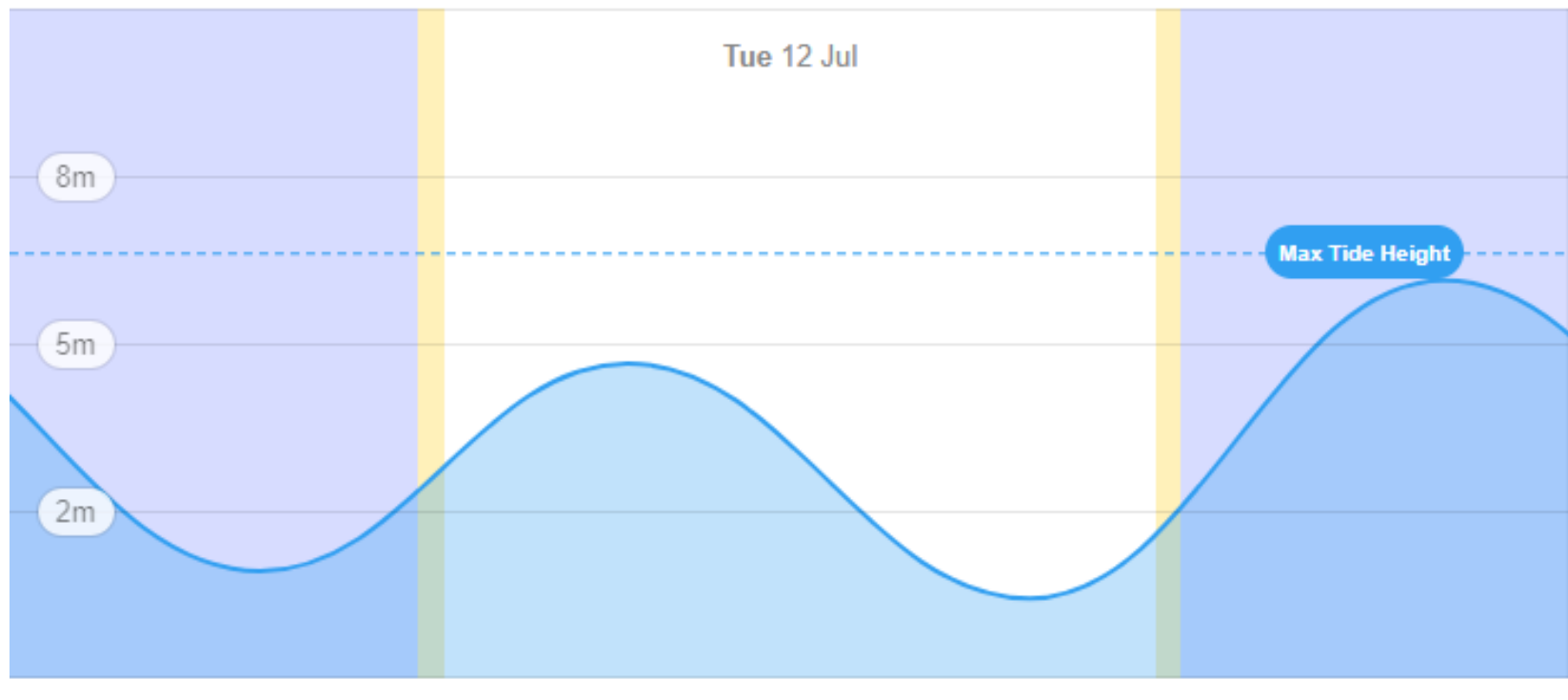
Mackay



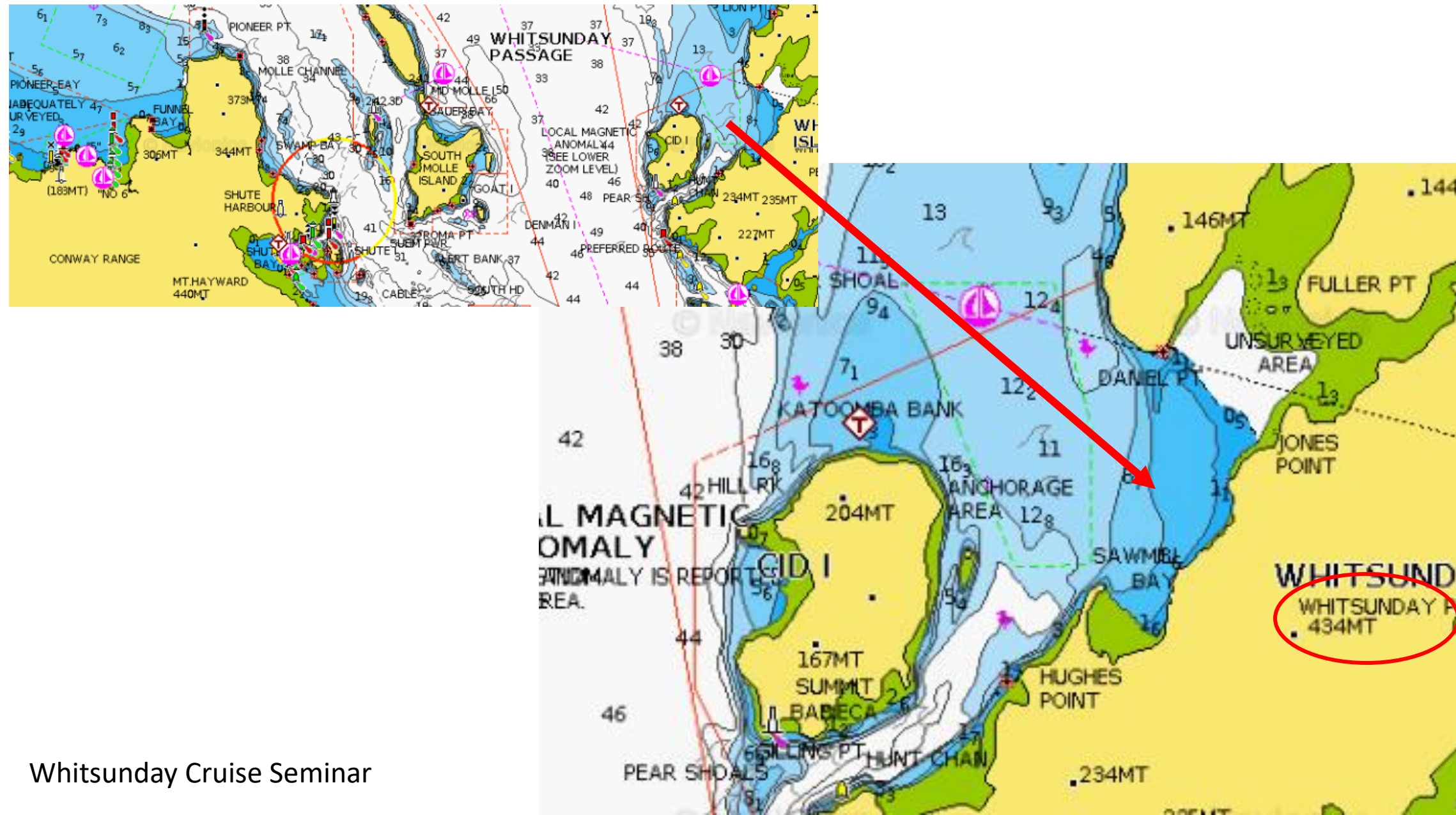
Mackay Marina



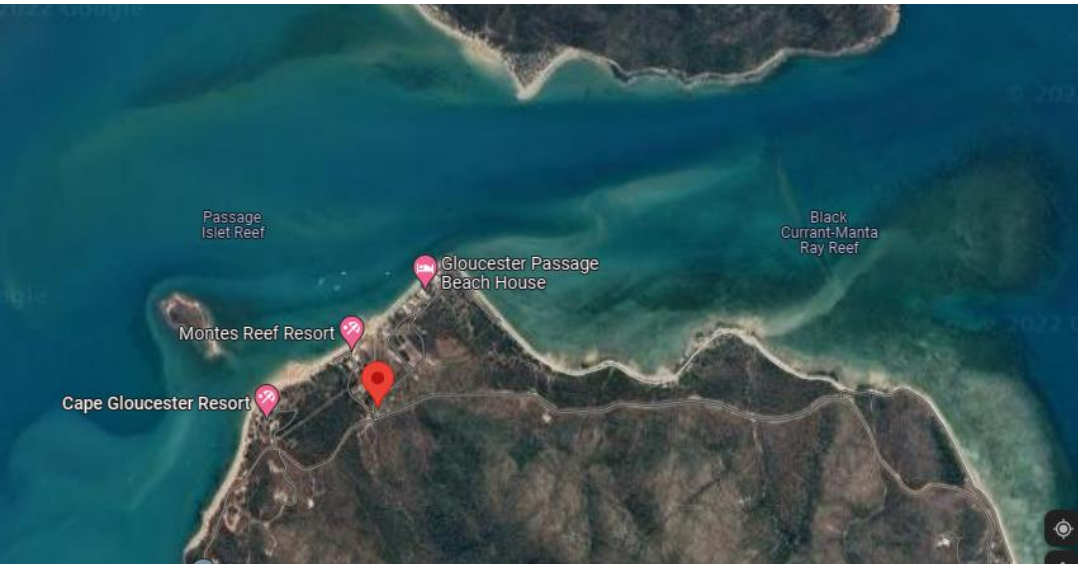
Mackay Tides



Cid Harbour Rendezvous



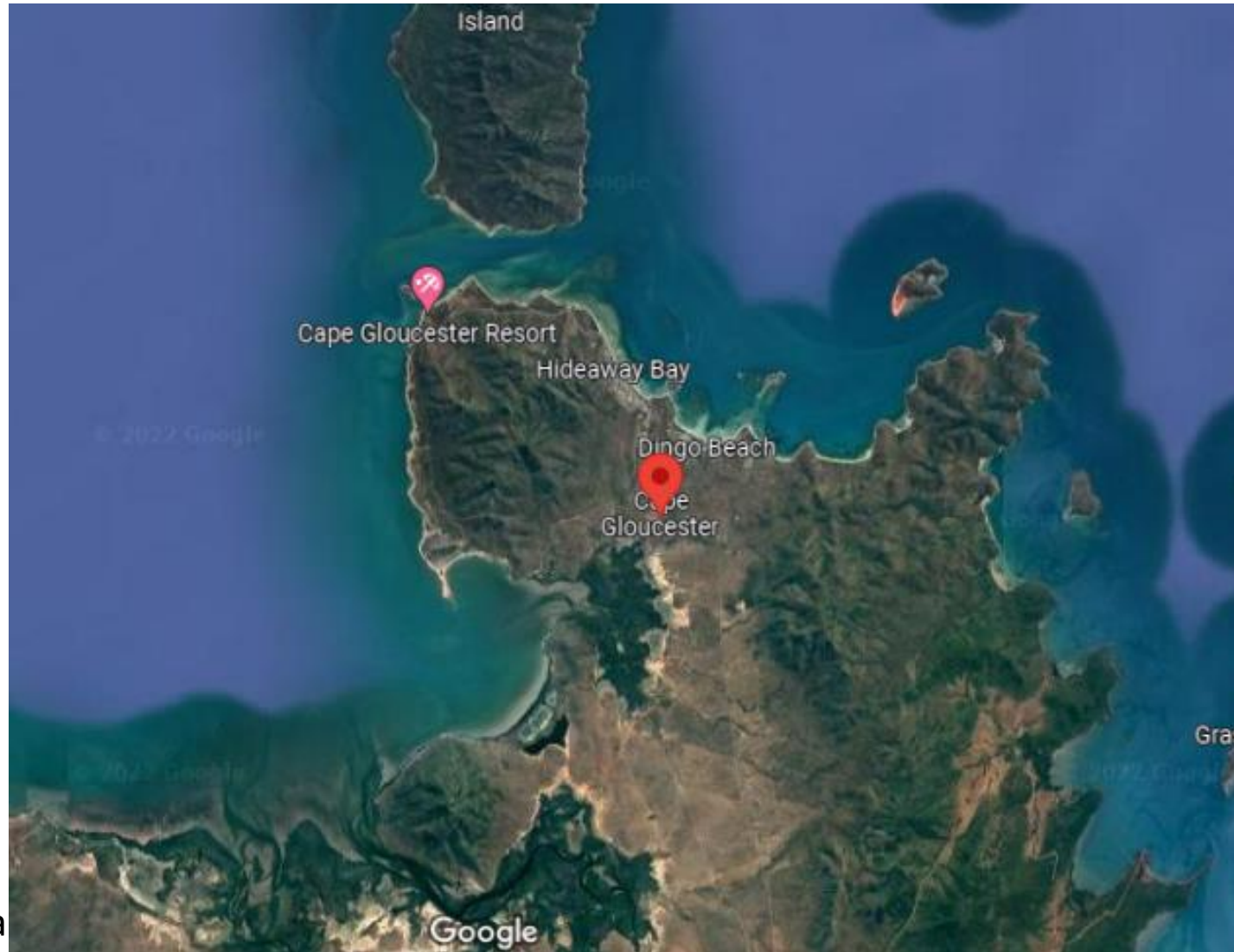
Gloucester Passage – SICYC Rendezvous



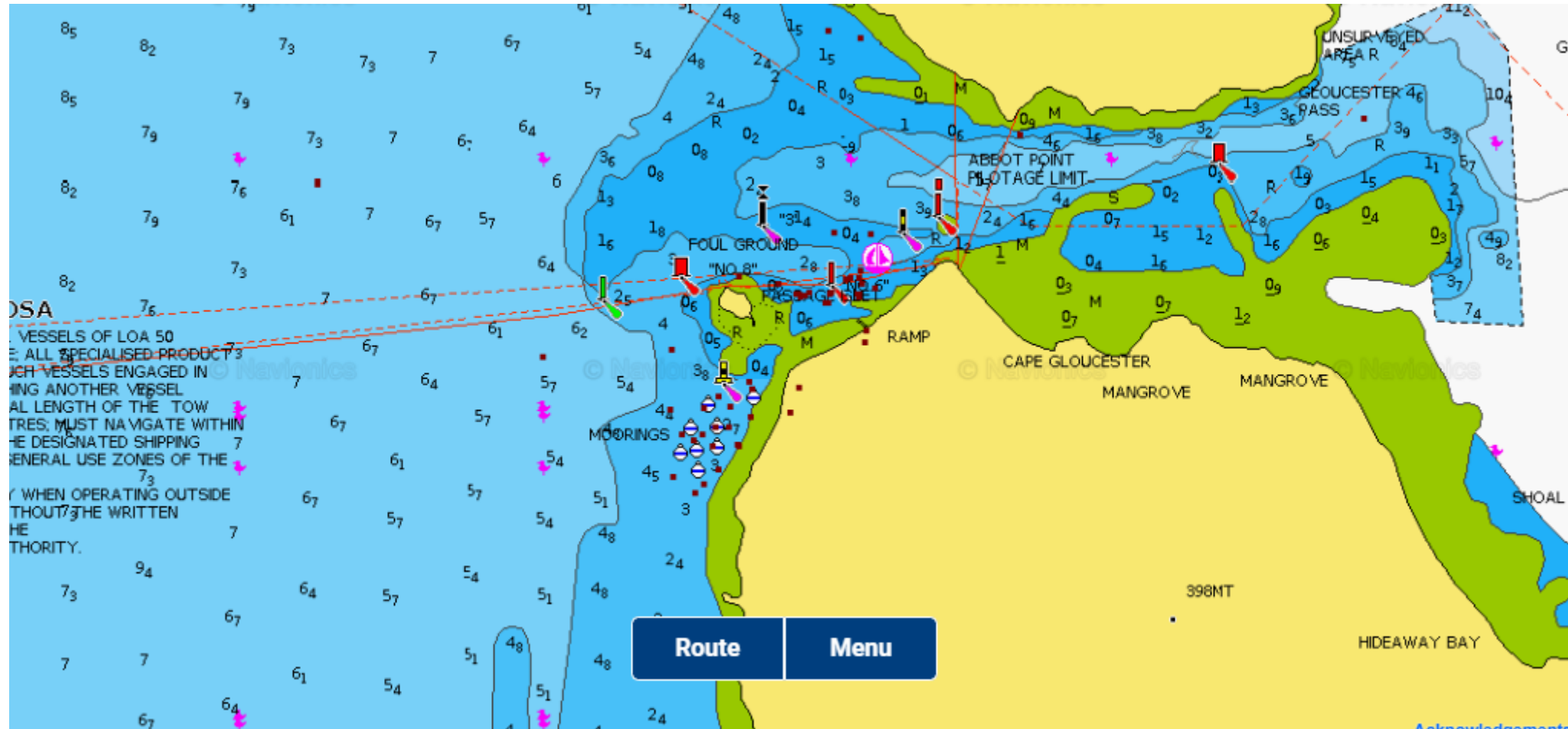
Shag Islet Cruising Yacht Club Annual Rendezvous - <https://sicyc.com.au/>



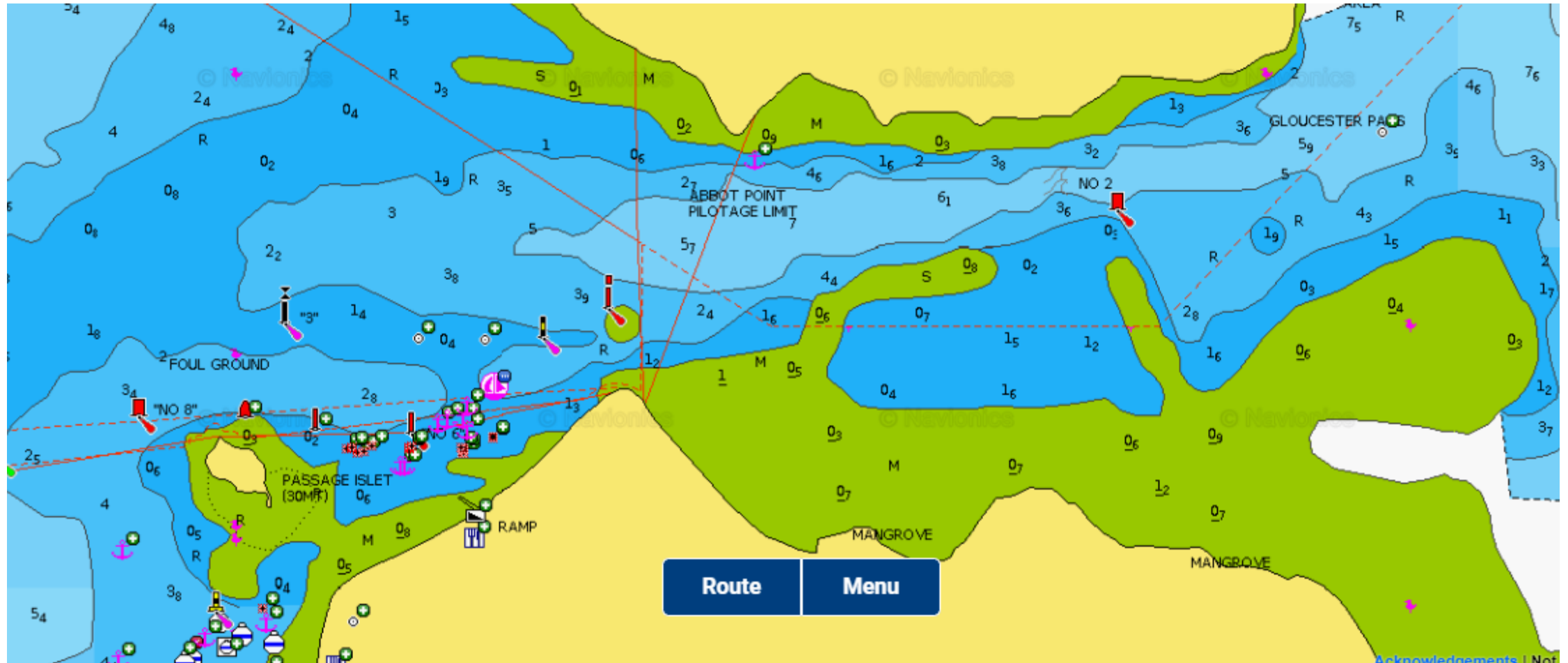
Cape Gloucester



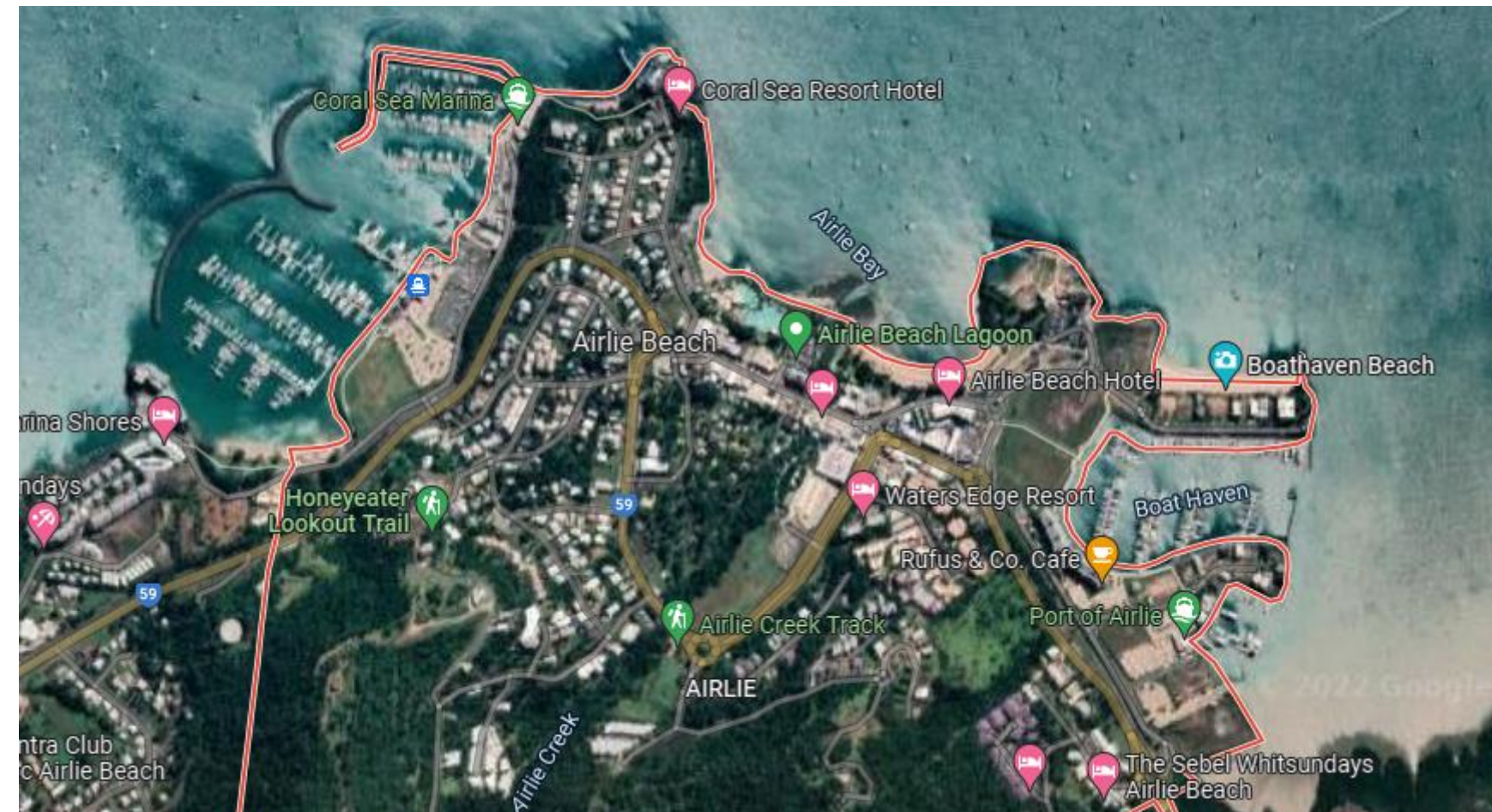
Cape Gloucester



Shag Islet



Airlie Beach



Airlie Beach Marina offers complementary car hire for provisioning etc

Airlie Beach



Port of Airlie

