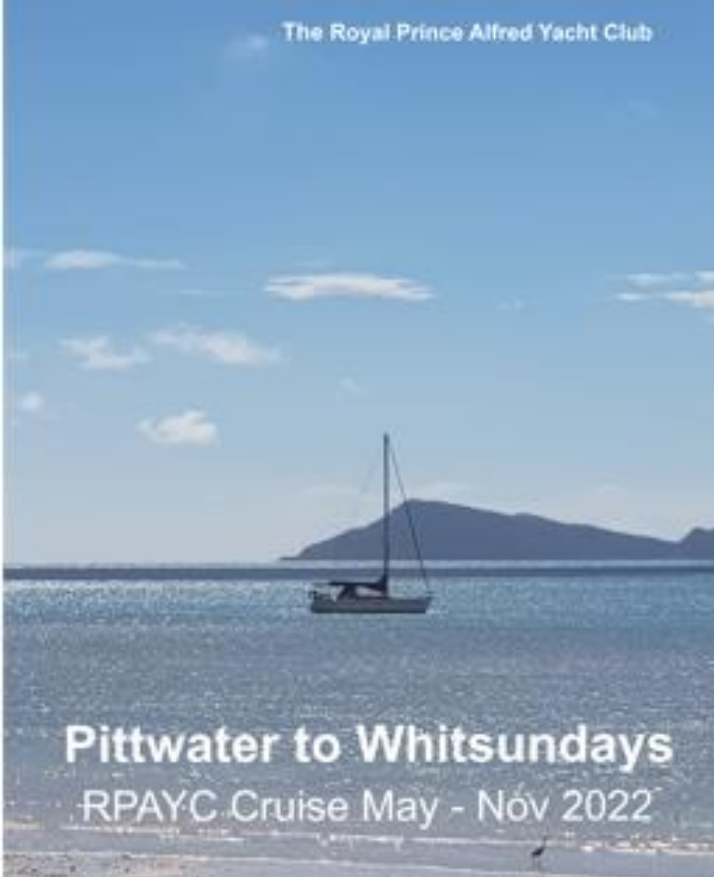


The Royal Prince Alfred Yacht Club



# ***Whitsunday Cruise 2022***

***May 2022 – November 2022***

# Whitsunday Cruise

- Rendezvous Cruise
  - Nominated rendezvous locations and dates
  - It is not an official cruise in company. However cruising in company is encouraged as it enhances the experience.
- The focus of this year's cruise is on the Capricorn Coast and Whitsundays with plenty of time to explore different destinations
- Expectation is that participants attend at least 2 rendezvous and at least 10 days cruising in company during the cruise



# Whitsunday Cruise Distances



Mooloolaba to Gloucester Passage  
Approx 522nm

Min 2000 nautical mile  
journey  
(more than 25 times the  
distance from Pittwater  
to Nelson Bay)

Pittwater to Mooloolaba  
Approx 495nm



# Cruise Rendezvous

DATE WINDOW	RENDEZVOUS LOCATION
26 May 2022 to 29 May 2022	Mooloolabah
9 June 2022 to 19 June 2022	Bundaberg (may include Bundaberg Town or Lady Musgrave)
23 June 2022 to 26 June 2022	Great Keppel Island
10 July 2022 to 14 July 2022	Mackay
4 August 2022 to 10 August 2022	Airlie Beach
24 August 2022 to 28 August 2022	Gloucester Passage (SICYC Rendezvous)
Note: post Gloucester Passage Rendezvous, option to continue north or remain in Whitsunday area	
29 September 2022 to 3 October 2022	Bundaberg



# Pre-requisites

## Must haves

- Passed Short Coastal Audit
- Carry paper charts for cruising area
- Insurance especially Third Party and Public Liability (required to use the marinas as well as condition of cruise)
- Required Reference books
- AIS send and receive (Send: so bulk carriers can see you. Receive: so you can see where your friends are)

## Recommendations

- Min one person have completed First Aid Course
- Recommended books



# Short Coastal Audit – part 1

CR	Item	PiC	Auditor	CR	Item	PiC	Auditor
2.03.1	Equipment must function effectively			4.04	Sound signaling device (foghorn)		
2.03.2	Ballast and heavy items - secured			4.06	Charts , Books - Colregs, Green Book., RPAYC Emergency sticker	●	
3.06.1	Two escape exits, one exit must be forward of the foremost mast,.			4.07	GPS, one perm instln,		
3.06.2	Exit min clearance 450x300mm or 450mm dia			4.08	Depth sounder, perm instln, visible from helm.		
3.06.4	Multi: each hull containing accommodation has at least two escape exits			4.09	Log, speed and distance, not reliant on GPS.		
3.06.5	Multi: Each hull containing accommodation has a viable means of escape in the event of inversion.			4.11	Emergency steering - tiller, other alternatives, note exception at 4.11.1b		
3.07	Hatches & companionways – securing arrangements, above and below operation, port sizes, signage if > 0.07m <sup>3</sup>			4.12.1	Tools to disconnect rigging		
3.08	Cockpit – watertight, self-draining, min drain numbers and size, bilge pump out not connected to c'pit drains			4.12.2	Engine spares - filters, belts, oil, seals, impeller	●	
3.09	Seacocks - shut-offs on all openings below waterline			4.12.3	Bosun's chair or climbing harness		
3.10	Plugs – for seacocks, lanyard			4.12.4	Knife - high mod. fibre capable, sharp, c'pit		
3.11	Mast - keel stepped heel secure			4.14	Boat's name - lifejackets, lifesling, cushions etc		
3.12.3	Bow pulpit opening <360mm, stanchions - perm instaln, location, straight.			4.15	EPIRB - location, batt date, regn, testing.		
3.12.6	Lifelines- taut, continuous barrier, 2.2m max unsupported, wire size, height, lanyard gap.			4.16	Liferaft(s) - all crew, stowage location, certs.	●	

Some books can be downloaded and printed

Complete set of spares will allow for an engine service whilst away

Life raft is optional for short coastal

# Short Coastal Audit – part 2

	unsupported, wire size, height, lanyard gap.				location, contents.		
3.12.6	Multis; to comply with lifeline requirements as closely as possible.			4.17	Grab bag – contents, location		
3.13	Multi: nets & tramps – check chafe, fixing points, foot trap risk, openings less than 50mm.			4.18	Lifebuoy - 1+ sling/module, light, colour, retro tape		
3.15	Toilet(s) – securely installed.			4.19	Flares - 2R, 2W, 2O, waterproof container	●	
3.16	Bunks – securely fastened, fit for purpose			4.20	Heaving line – 15m, float, access from c'pit		
3.17	Galley - stove, securely fastened, gas cert, shut-off sign			4.21.3.d	Heavy weather jib if storm jib not carried.		
3.18	Potable water volume 3L/pp/day, plus addl. pot water			4.21.3.g	Mainsail – reef at least 25% if trysail not carried		
3.19	Handholds - below deck, fit for purpose.						
3.20	Bilge pp, one manual, lanyards on pump handle, two buckets	●		4.23	Halyards – at least 2 per mast		
3.20.7	Multi: Provision to pump out all watertight compartments			4.25	MOB - explain retrieval method		
3.21	Compasses - marine magnetic, spare suitable for steering			4.26	Distress sheet		
3.22	Nav. Lights - IRPCAS, spares, reserves, no masking.			4.27	Stowage chart		
3.23	Engine & fuel - speed, perm nstaln., tank(s), shut-offs, capacity, 100nm			5.01.1	Lifejackets - all crew, spare, inflate test, Level 150 min, in date.		
3.24.5	VHF - one, perm installed, emgy and masthead antenna			5.01.3	Lifejackets – consistent with user size		
3.24.8	Radio receiver – weather bcasts			5.01.14	Lifejackets – spare cylinder, rearm kit,	●	

Check bilge pump works

Check flares are in date (do not expire prior to audit)

Spares for lifejackets or additional life jackets

# Short Coastal Audit – part 3

3.24.10	Mobile phone, charger			5.02	Harness+ tether (2m) - all crew, crotch straps		
3.26	Batteries – sealed only, dedicated engine start battery, isolation.	●		5.02.7	Tether clipping points		
3.27	Barometer fitted, not powered.			5.03.1	Jackstays, layout, strong points.		
3.28.1	Hull identification, lettering size			5.04	Personal lights - all crew, strobe/SOLAS, batteries		
4.01	Fire extinguishers - Two 10BE, serviceable, fire blanket.	●		6.02	Medical kit - contents, in date, WT container		
4.02	Anchor - one, chain and line, appropriate size, one for immediate use	●					
4.03	Two flashlights, one watertight floating suitable for MOB search, spares.						

During a long cruise your batteries will get a lot of work – check their health

Check fire extinguisher dates (do not expire prior to audit)

Anchor will get a lot of work





# Short Coastal Audit – medical

CR 6.02	Medical kit contents	Contents	PIC	Auditor
	Paracetamol 500mg. (Panadol) or Ibuprofen 200mg (e.g. Nurofen)	20		
Prescription	** Codeine 8mg + Paracetamol 500mg (Panadeine)  Non-prescription alternatives to Panadeine include products containing paracetamol or ibuprofen (an anti-inflammatory), or a combination of both such as Maxigesic, Mersynofen and Nuromol.	20		
	Soluble Aspirin (Disprin)	20		
	Butterfly Steristrips (Strips of 5)	5		
	Disposable Gloves	20		
	Crepe bandages 75mm x 1.5m	2		
	Triangular bandage	1		
	Low Absorbency non-adherent dressing/plain gauze (e.g. Melolin)	5		
	Band-aids	20		
	Adhesive tape 50mm x 2.5m (Leukoplast)	1		
	Roll, cotton wool	1		
	Antiseptic skin solution (Betadine) 15ml	1		
	Antiseptic cream with Lignocaine HCL (e.g. Medcream)	1		
	Normal saline (for washing) – 250ml	1		
	Solugel wound dressing 100gm (e.g. Solosite, Duoderm Gel, Purilon)	1		
	Sunscreen 30+ SPF 250ml	1		
	Anti-diarrhoea treatment (pkt) - (e.g. Imodium, Lomotil)	1		
	Scissors, stainless steel	1		
	Thermometer, clinical	1		
	Forceps, splinter, stainless steel	1		
	Safety pins, assorted sizes	10		
	CPR mask or 6 Face shields	1		
	Thermal / Space blanket	1		

## Additional recommendations

- Insect spray
- Mosquito coils
- Broad spectrum antibiotic (needs prescription)
- If you are on any medication take repeats with you (getting new scripts interstate is not easy)

# Required Paper Charts

**AUS 204** Broken Bay  
**AUS 207** Approaches to Newcastle  
**AUS 209** Port Stephens  
**AUS 220** Plans in New South Wales  
**AUS 809** Port Jackson to Port Stephens  
**AUS 810** Port Stephens to Crowdy Head  
**AUS 811** Crowdy Head to Nambucca Heads  
**AUS 812** Nambucca Heads to Clarence River  
**AUS 813** Clarence River to Point Danger  
**AUS 814** Point Danger to Cape Moreton  
**AUS 817** Great Sandy Strait and Hervey Bay  
**AUS 818** Sandy Cape to Bustard Head  
**AUS 819** Bustard Head to North Reef  
**AUS 820** North Reef to Port Clinton  
**AUS 822** Port Clinton to Percy Isles  
**AUS 823** Percy Isles to Mackay  
**AUS 824** Penrith Island to Whitsunday Islands  
**AUS 251** Bailey Islet to Repulse Islands  
**AUS 252** Whitsunday Group  
**AUS 253** Whitsunday Passage  
**AUS 254** Plans in Whitsundays  
**AUS 258** Whitsundays  
**AUS 259** Hinchinbrook Channel  
**AUS 269** Plans in Arlie Beach and Shute Harbor  
**AUS 825** Whitsunday Island to Bowen

Note some charts have been updated so check changes if you have old charts



# Cruise References

## REQUIRED REFERENCES:

“Cruising the NSW Coast” by Alan Lucas

“Cruising the Coral Coast” by Alan Lucas

“NSW Tide Tables”

“Queensland Tide Tables” – can be downloaded

## RECOMMENDED REFERENCES:

“100 Magic Miles of the Great Barrier Reef, the Whitsunday Islands” – really is essential

“Curtis Coast” by Noel Patrick – really is essential

“Beacon to Beacon” Moreton Bay and Great Sandy Straits – can be downloaded

“Rob’s Passage Planner” by Rob Starkey, or download relevant information



# Rendezvous

- You need to book your own berth (email is best so you can send all the boat details).
  - Boat name, length, beam, draft, contact details
  - Download a copy of your insurance so you can email to the marina
  - Download a copy of marina map and print it out so you know where your berth is
  - If your plans change notify the marina
- Ring before arrival to confirm your berth allocation and tie up (port / starboard)
- Do not be afraid to call and ask for help
- There will be one official event during the rendezvous arranged by the rendezvous host



# Mooloolaba Rendezvous



Check latest info regarding the sand bar at the entrance

Fuel now available at the Co-op

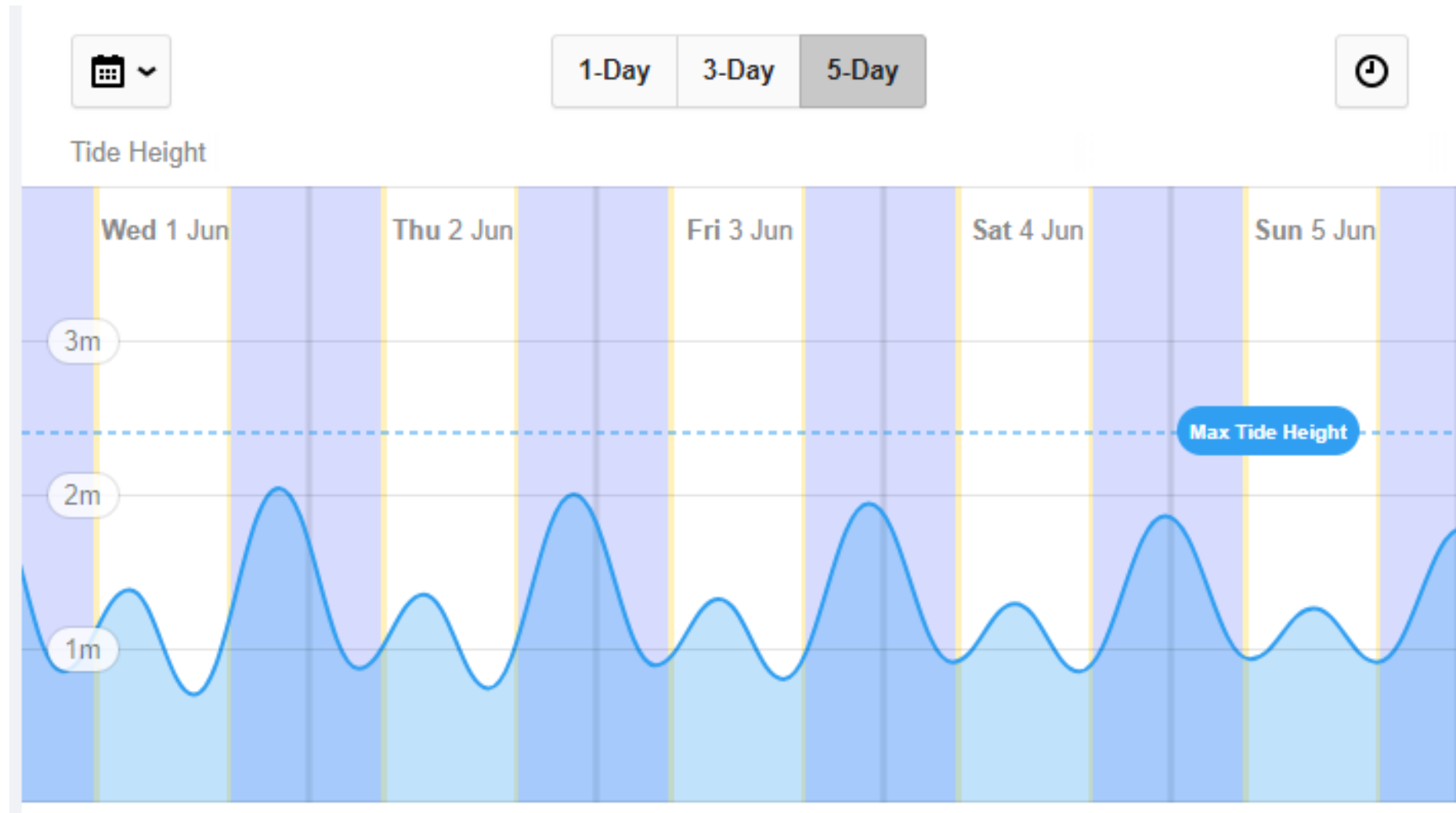
Walking distance to town

# Wide Bay Bar / Fraser Island

- Crossing Wide Bay Bar is not as bad as portrayed
  - Get the latest waypoints from Tin Can Bay Coast Guard
  - It is a bar so lifejacket wearing is compulsory
  - Better not to cross in the afternoon when the sun is in your eyes
  - The optimum time for the crossing is considered to be two hours before high tide. This provides enough water over the shallow sandbars and the incoming current travels in the same direction as the prevailing south easterly swell.



# Wide Bay Tides



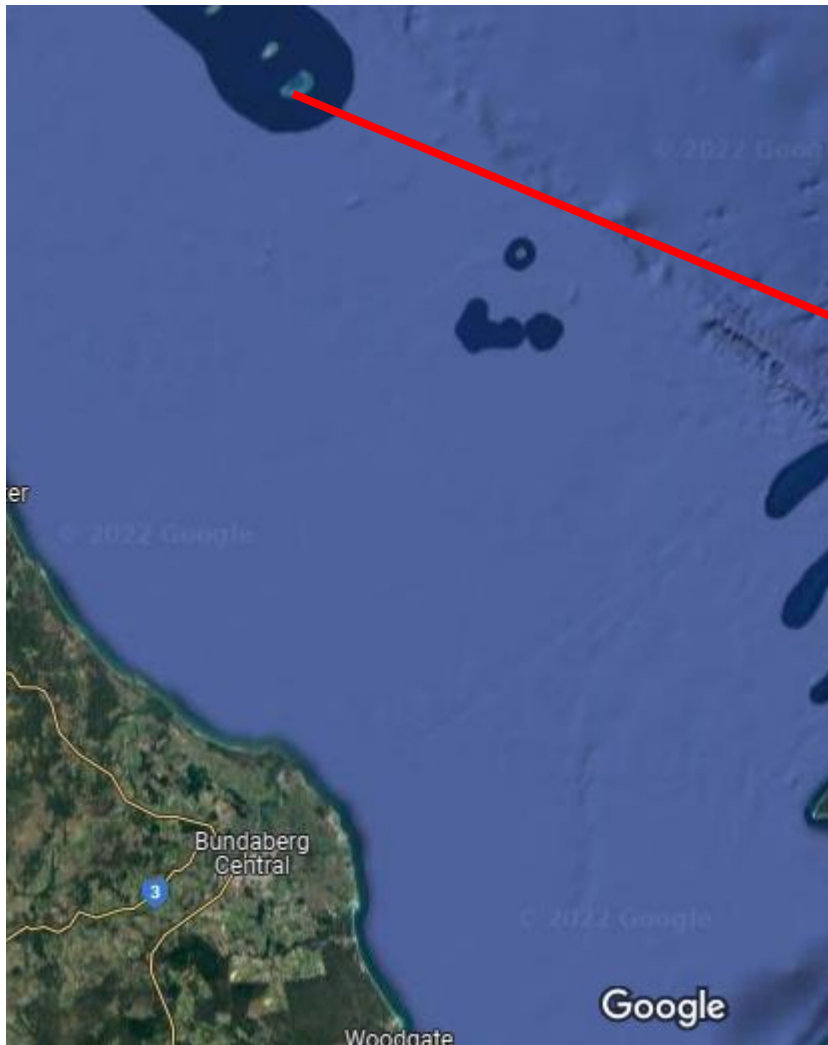
# Bundaberg Rendezvous



- Fuel available
- Bus into town
- IGA at Burnett Heads provides complimentary shuttle
- Anchoring in the river is also possible



# Lady Musgrave Island



Lagoon is approx. 1nm x 0.5nm



# Great Keppel Island



- Rendezvous is at the island, actual location weather dependent
- Rosslyn Bay Marina option before or after for refuelling, supplies etc

# Mackay Marina

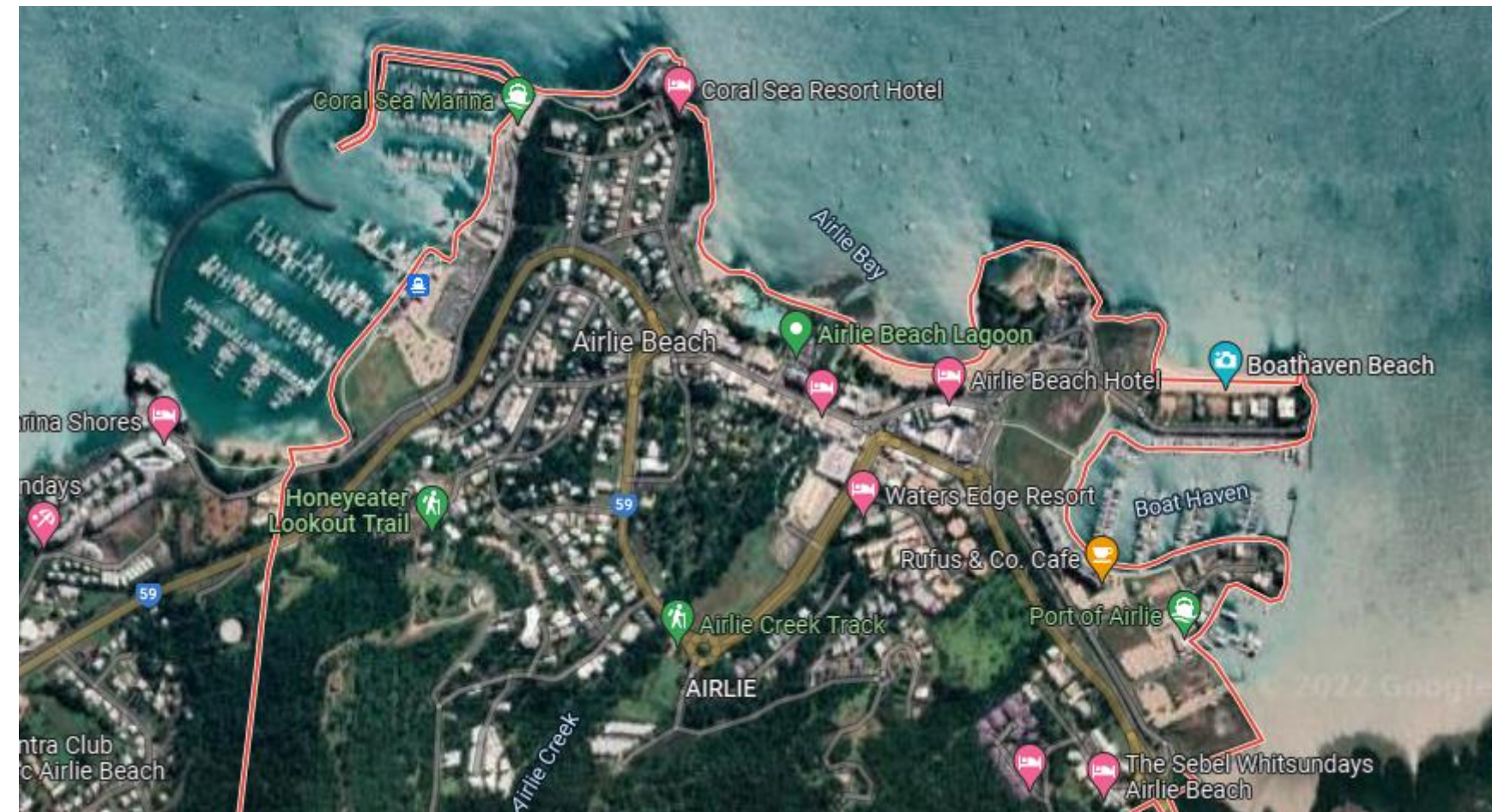


Do not go here

Fuel and restaurants on site  
Bus into town



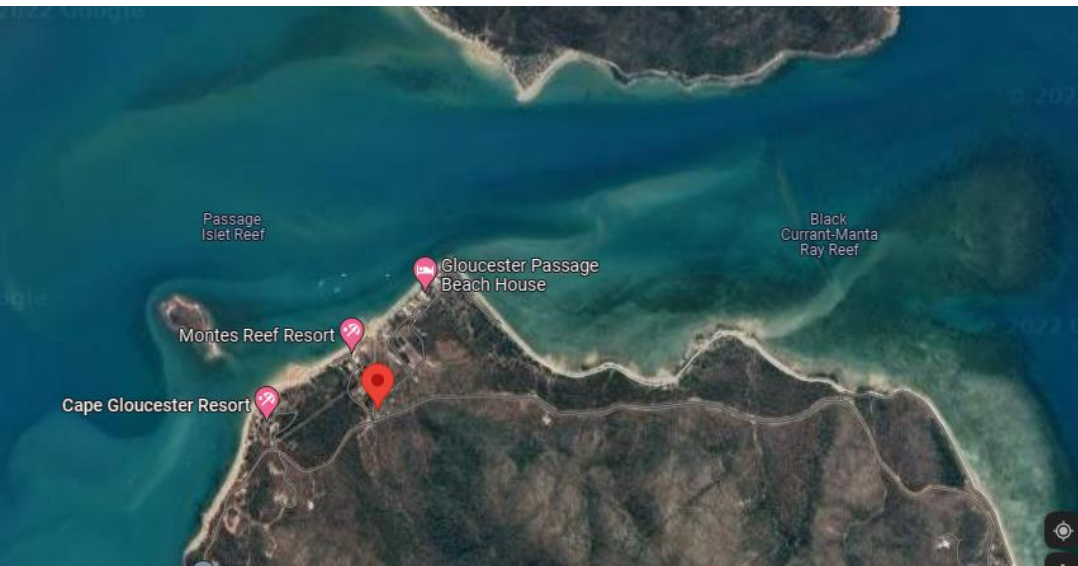
# Airlie Beach



Rendezvous is at Airlie Beach Marina but there are also other marinas at Airlie Beach

Airlie Beach Marina offers complementary car hire for provisioning etc

# Gloucester Passage – SICYC Rendezvous



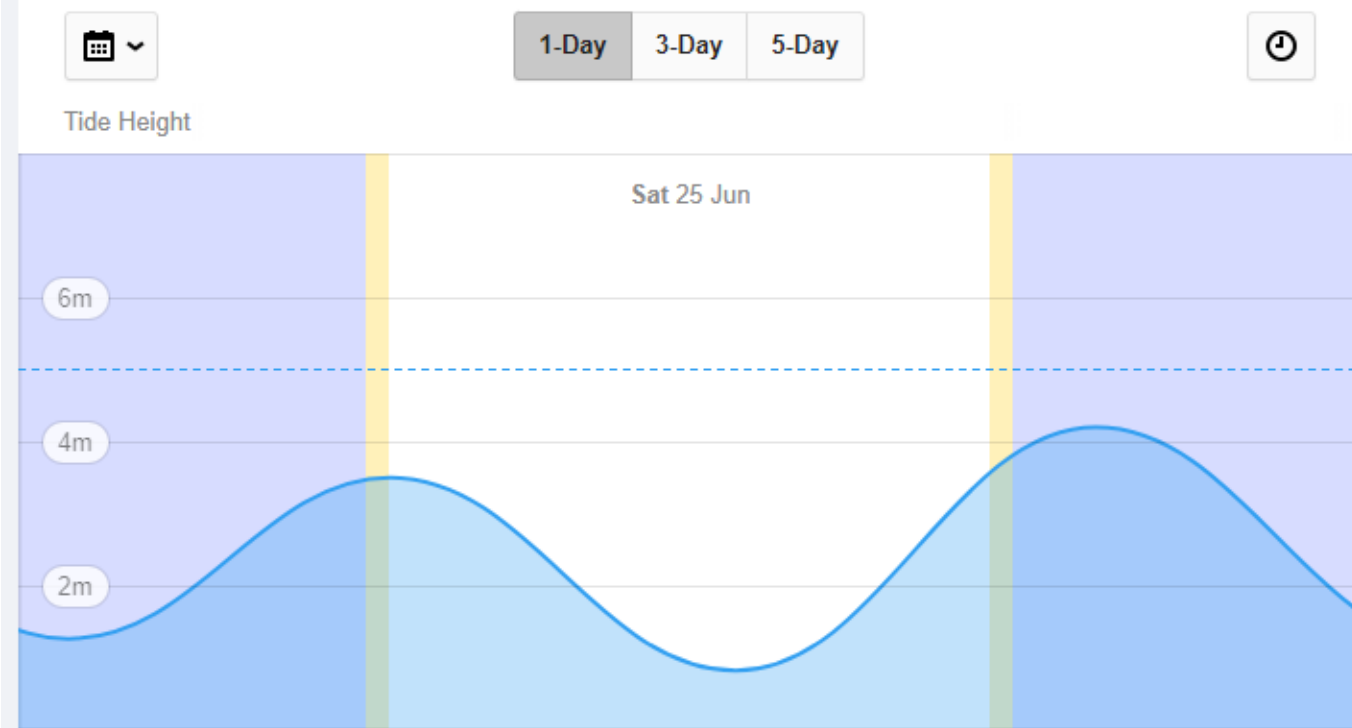
Shag Islet Cruising Yacht Club Annual Rendezvous - <https://sicyc.com.au/>

# SICYC Season of Sail Rendezvous Dates

Area	2022 Dates
Pittwater	Fri 29 Apr - Fri 6 May
Lake Macquarie	Fri 13 - Mon 16 May
Clarence River	Sat 21 - Sat 28 May
Gold Coast	Sat 11 June
Moreton Bay	Sat 18 June
Brisbane	Sat 02 -03 July
Great Sandy Straights	Sat 9 July
Bundaberg	Sat 16 - Sun 17 July
Gladstone	Sat 23 July
Capricorn Coast	Sun 31 July
Mackay	Sat 6 – Sun 7 Aug
Airlie Beach	Thur 18 - Sat 20 Aug
Shag Islet	Fri 26 - Mon 29 Aug



# Queensland Tides



... Queensland has a relatively large and variable tidal range, for example:

- 7.18m at Hay Point.
- 6.62m at Mackay.
- 4.85m at Karumba.
- 4.87m at Gladstone.
- 3.94m at Thursday Island.
- 3.57m at Cairns.
- 2.78m at Brisbane.
- 2.21m on the Sunshine Coast.

Queensland tides are much greater than in Sydney – more than 5m swings are possible

- 3 x scope = additional 15m
- 5 x scope = additional 25m

This will also affect swing area  
Check tide when anchoring.

Most chart plotters will give you the tides where you are anchored. Double check once anchored



# Great Barrier Marine Park Rules

There are strict rules within the Marine Park

Scientific and preservation zones are off limits

Buoys mark areas where you cannot anchor to protect the reef

## FISHING

- ✓ Have a zoning map and know the zones where you are going and what's allowed there
- ✓ Know any Special Management Area or Plan of Management requirements
- ✓ Know the definition of one hook
- ✓ Know which species are protected and no-take
- ✓ Know Fisheries Queensland bag and size limits and any additional regulations
- ✓ Bring a sturdy bag or container to take rubbish home

## BOATING

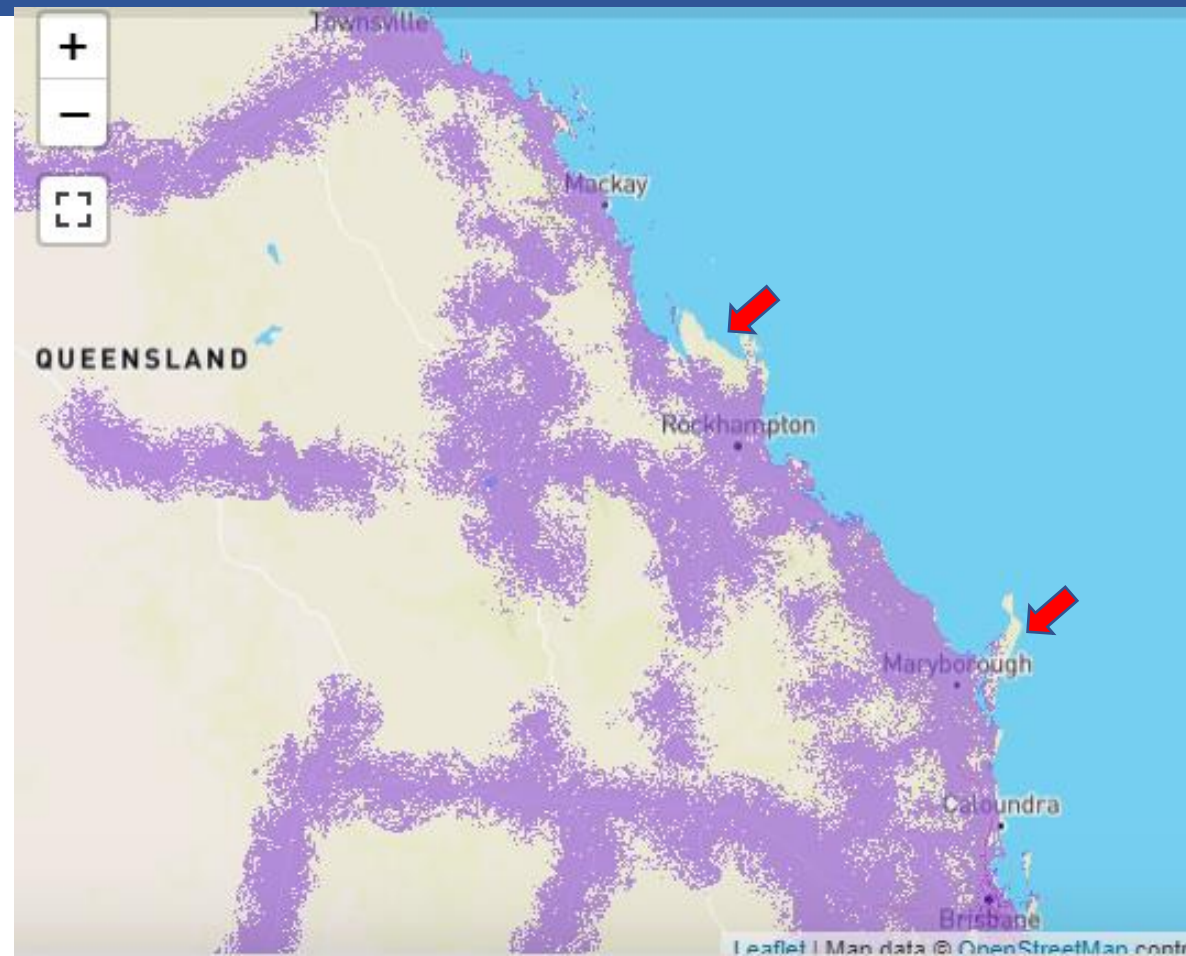
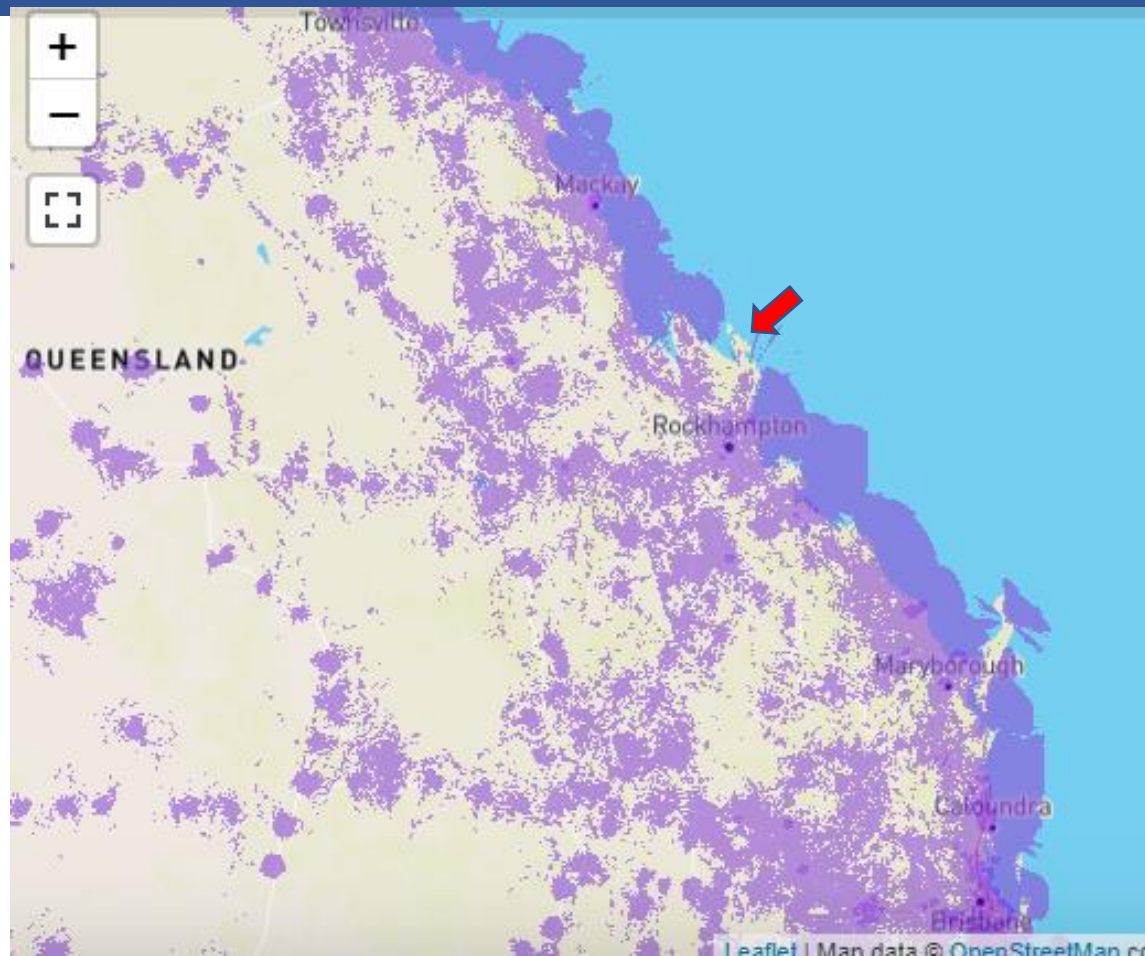
- ✓ Have a zoning map and know the zones where you are going and what's allowed there
- ✓ Know any Special Management Area or Plan of Management requirements
- ✓ Know any anchoring or mooring rules and responsible practices
- ✓ Rubbish bin onboard to take your rubbish home with you
- ✓ Engine well maintained, safety gear packed and all in good working order
- ✓ Slow down over seagrass beds and near coral reefs



<https://www.gbrmpa.gov.au/> or download the Marine Park App



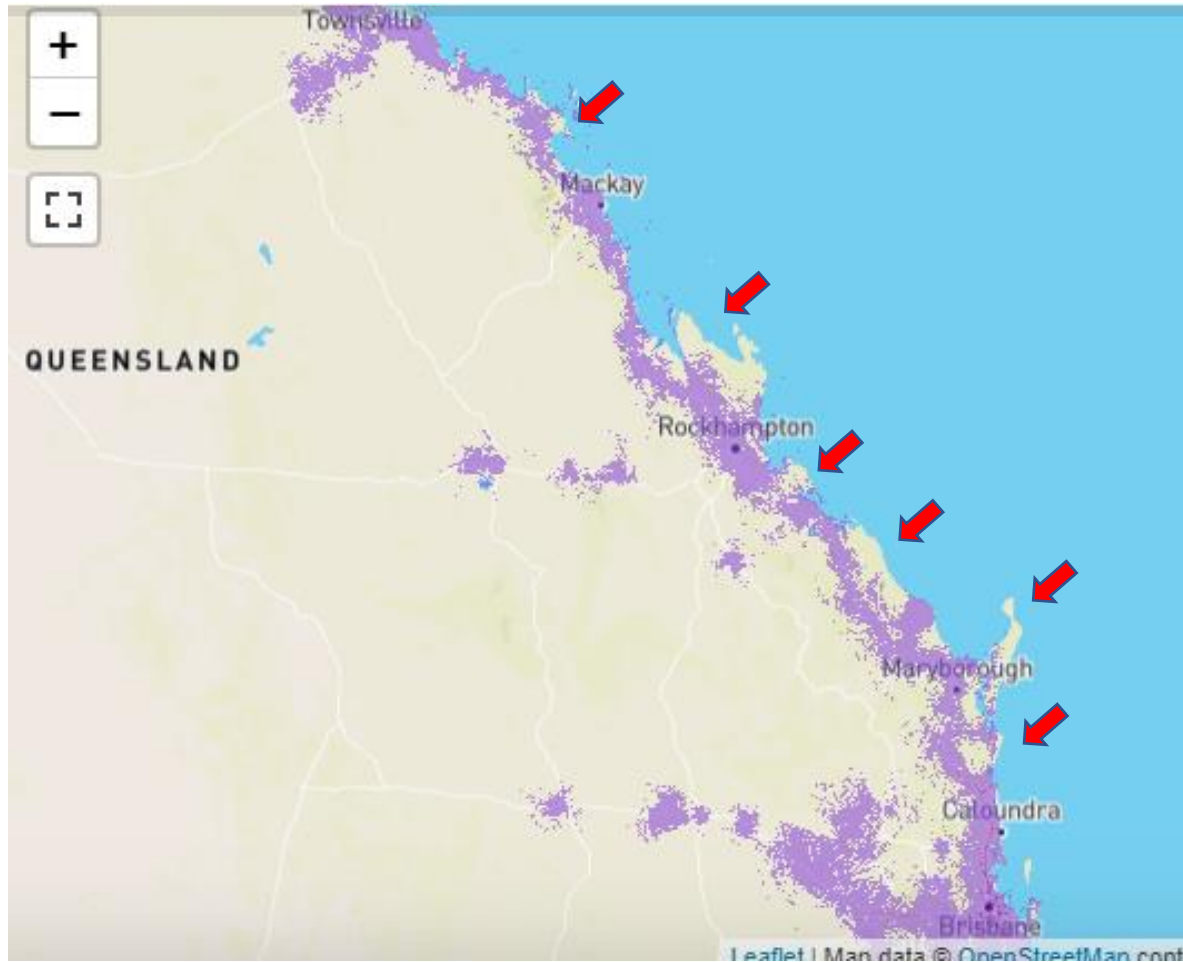
# Telstra and Optus 4G coverage



Both Telstra and Optus have good coverage along the coast  
Known problem areas

- Shoalwater military area (Port Clinton)
- Optus on Fraser Island
- Typical coverage is ~10nm from the coast without a booster with no obstructions

# Vodafone / TPG 4G coverage

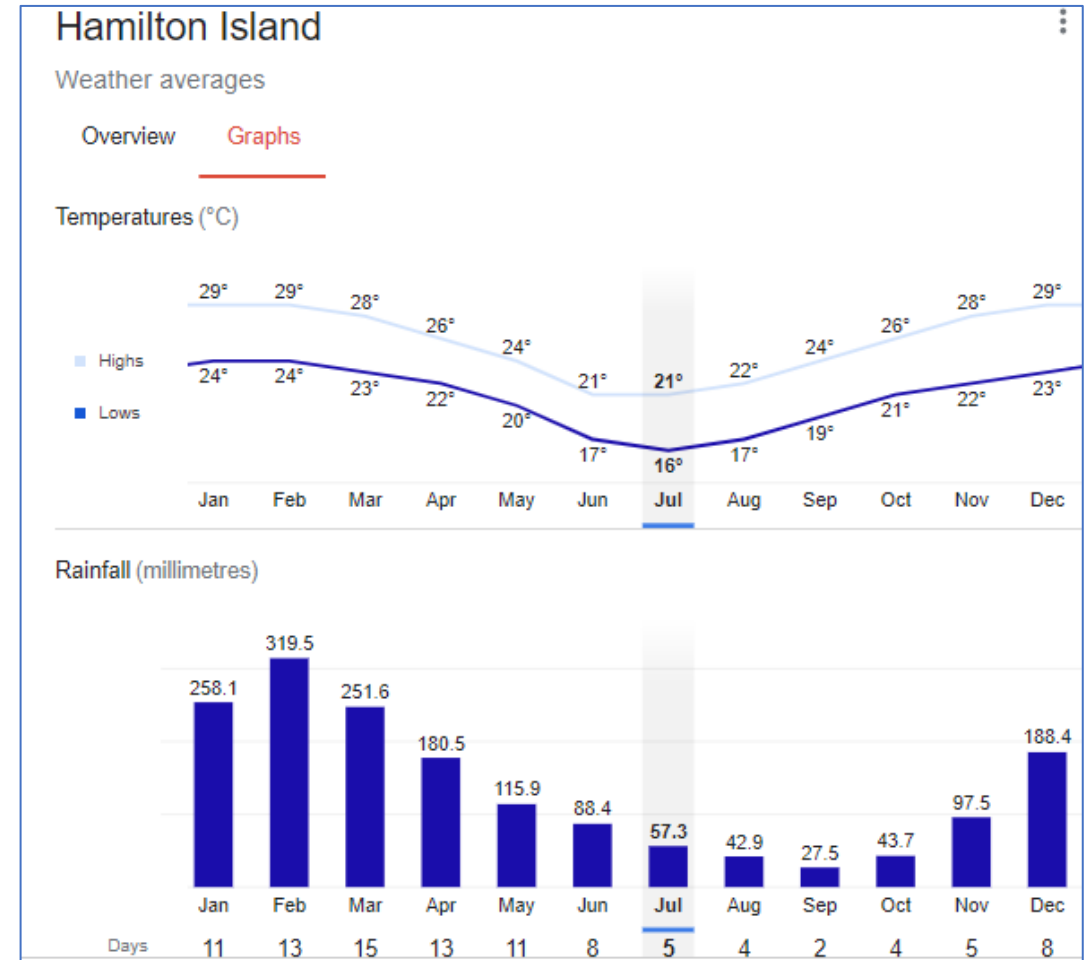


TPG coverage more patchy than the others

The Telstra / TPG announcement will not have any impact in 2022

# Some alternate perspectives

- It is winter, even though it is in Queensland so it will not be hot every day, especially in the evening. It will also rain
- You are away for quite a long time, are you going to have BBQs every night. A pressure cooker eg Breville Fast/Slow allows you to cook meals quickly. Plan for variety in meals and simple meals after a long day.
- Take grocery bags for when you go shopping or even a granny trolley
- There are laundries at most marina's BUT you will need change. Take some with you. Dye catcher allows colours and whites in the same load.
- Even though you are inside the reef there are still waves and swell



# Other observations

- Over a 2,000 mile / 3 month cruise things will go wrong. Be prepared for this
- Most people panic over water usage, without a water maker this is most likely your limiting factor between marina stops. However with careful usage this should not be an issue. Installing a salt water tap for rinsing significantly reduces your fresh water consumption.
- You will encounter a range of conditions, be prepared to adjust your plans



# Next Steps

- Cruise seminar covering practical navigation, comms, electronics, provisioning, fishing and engine maintenance
- Confirm intention to participate in the cruise. Complete on line declaration – by 15 March
- Nominate hosts for each rendezvous
- Complete on-line cruise registration by 15 April
- Make preliminary marina bookings
- Complete Short Coastal Audit if necessary
- Do your own research to decide where you want to visit, everyone you ask will give you different ideas.

# Conclusion

- Ultimately it is the skipper's responsibility to decide if conditions are suitable
- Keep your radio on Channel 77 / 16 (dual watch)
- It is not a race, have fun and enjoy yourself

