



WELCOME TO

The Royal Prince Alfred Yacht Club

Digital Pen and Paper

Writing with a digital pen on a sheet of paper enabled with a dot pattern functionality could be the most efficient and economical way to capture your information.



With our solutions:

- reading and writing on A4 size paper is fast
- you have a backup
- you are writing on the output, no need to print again
- data and images are shared within seconds
- you receive data Alerts, monitor KPIs and concentrate on meaningful data only

They chose us...

GROSVENOR | engineering group
Innovation | Intelligence | Sustainable



HITACHI
Hitachi Construction Machinery (Australia) Pty Ltd



PreciseAir
Fresh Thinking



William Crendal
Destiny Wireless Australia
Suite 7 Level 4, 18 Smith Street – Chatswood NSW 2067 – Australia

+61(0) 416 140 041 +61 (2) 9417 5333

www.destinywireless.com.au



Scan this QR Code to
visit our website



Contents

How to Find Us.....	5
Welcome.....	7
A Brief History.....	8
Clubhouse and Functions rooms.....	15
Sailing Pathways.....	20
Sailing Programme.....	24
Junior, Youth & Adult Centreboard Sailing.....	38
Centreboard Development Pathway.....	40
Regatta & Event Hosting.....	43
Cruising.....	50
Sail Training: On-water & Shore-based.....	59
Gymnasium Services.....	67
Marina, Moorings and Hardstand facilities.....	71
Boatyard Services.....	79
Join today, become a Member.....	81
Member Benefits.....	82
Community Support & Industry Awards.....	89



PREMIER PUBLISHING

14 Ellis St
South Yarra VIC 3141

T 03 9521 7994

E info@premierpublishing.com.au

W www.premierpublishing.com.au

The Royal Prince Alfred Yacht Club and Premier wish to thank the advertisers who appear in this publication for their support and wish them every business success. The contents of this brochure are believed to be correct at the time of printing, nevertheless, we cannot endorse and readers should not rely solely upon the accuracy of any statements or claims contained herein without prior consultation with the service provider.

Photography provided by The Royal Prince Alfred Yacht Club.



How to Find Us

The Royal Prince Alfred Yacht Club is conveniently located at Newport on Sydney's Northern Beaches and easily reached from the CBD to the south, Parramatta to the west and Gosford to the north.

For directions, see the Contact Us page of the Club website: www.rpayc.com.au/contactus

Once reaching Newport from the south, turn left at the traffic lights (7 Eleven) into Bardo Road (this is a right turn at the lights immediately after the 7 Eleven from the north). After 750m take the third right onto Nooal St and then left at the next roundabout onto Irrubel Rd. After 150 metres take the second left on to Mitala St and you will find us at the end of this road (150m).



Contact Information

The Royal Prince Alfred Yacht Club

16 Mitala Street
Newport Beach 2106 NSW Australia

Telephone

(02) 9998 3700 (reception)

Email

info@rpayc.com.au

Web

www.rpayc.com.au

Social Media

Keep up to date with all the latest news from the Club by visiting our pages on Facebook, Twitter, Instagram and YouTube.

Facebook

www.facebook.com/royalprincealfredyachtClub

Twitter

twitter.com/rpayc

Instagram

[instagram.com/rpayc](https://www.instagram.com/rpayc)

YouTube

search "Royal Prince Alfred Yacht Club"

YOUR HEALTH. YOUR LIFE. YOUR COMMUNITY PHARMACY NEWPORT.

- ✓ FREE WEBSTER PACKING SERVICE
- ✓ 10% SENIORS DISCOUNT
- ✓ FREE HOME DELIVERY
- ✓ FREE MEDICATION REVIEW

We are committed to providing our community with the highest quality standard of care while staying competitive. **If you find a cheaper price on a stocked item, WE WILL MATCH THAT PRICE!**

Visit us at Shop 3/1 Kalinya St, Newport, located in front of The Newport Hotel (Arms Hotel). Get in touch on (02) 9999 1186.

YOUR COMMUNITY



NEWPORT

Personal Service is our Guarantee

Welcome

The Royal Prince Alfred Yacht Club is situated on Green Point at Newport on the pristine body of water called Pittwater, on Sydney's Northern Beaches.

"The Alfred's", as it is known by locals and members, has a long and colourful history dating back to 1867 and is one of Australia's oldest yacht Clubs.

The Club offers members and their guests some of the finest facilities in Australia; with state-of-the-art floating marina, a modern boat yard with 50-tonne travel lift, two hardstand boat storage areas, on-site marine services, tender service, gymnasium, multi-level secure parking, à la carte dining restaurant (Alfred's Table), casual waterfront bistro (Halyard's Bistro), and first class function facilities that have earned it an international reputation as a superb Club.

The Alfred's takes pride in its past achievements while being dedicated and committed to its future success. The Club has an ongoing commitment to provide the best facilities and conditions for its members and their guests, on and off water and to offer a warm and friendly welcome to all visitors, local, national and international.

The Club offers a variety of weekly inshore and offshore keelboat racing events, cruising events, plus centreboard off the beach racing on Sundays. Additionally, weekly social activities for all ages, including a fun and exciting sailing training academy for kids to learn to sail, a youth development programme, a schools Term programme, fun holiday courses, as well as an adult learn to sail and development programme for sailors of all levels, provide plenty of opportunity to get involved in sailing at the Club.

We look forward to welcoming you to "The Alfred's" soon.



A Brief History

The Royal Prince Alfred Yacht Club celebrated its sesquicentenary – the 150th anniversary of its creation – in 2017.

The Club was founded on Tuesday, 15th October 1867. An advertisement was placed in The Sydney Morning Herald - "Mosquito Yacht Club - Boat owners wishing to join please meet at McGrath's at 8 tonight." The advertised meeting duly took place at Punch & McGraths Hotel in King Street.

With Mr. T. Strickland in the chair, it was decided right there and then to form a yacht Club to be called "Prince Alfred Yacht Club". It seems then, as now, Club members were in the habit of getting things done rather than merely talking about them!

The name Prince Alfred was adopted to commemorate Prince Alfred's forthcoming visit to Sydney. In January 1868, His Royal Highness, Prince Alfred, The Duke of Edinburgh, in command of HMS Galatea, sailed into Port Jackson.

He was met by two lines of yachts from the Royal Sydney Yacht Squadron and The Prince Alfred Yacht Club, between which HMS Galatea passed.

In August 1911, The Prince Alfred Yacht Club was given permission by King George V to use the prefix "Royal".

The Club originally occupied premises in Moore Street, Sydney, known today as Martin Place and it eventually moved into 51 Castlereagh Street. In 1956, the Club purchased property in Rowe Street and a new building was built on the site.

Our ties to our current location date back to 1919, when the Committee decided that Sydney Harbour was becoming too congested for yacht racing and a sub-committee was formed to inspect land that would be suitable for yacht racing in the Pittwater area.

As a result, Green Point was purchased for this purpose for an amount of 650 pounds. The land remained practically unused for many years, until a group of enthusiasts, who had built Jubilee class yachts, banded together and built a boatshed, slipway and pontoon to cater for their needs. The Governor of New South Wales, the Honorary Commodore of the Club,

Get to know your local Batteryologists

Your locally owned and operated Battery World stores in the northern beaches started in 1998 when Chris Arcus' father, Ken Arcus, decided to expand the auto electrical business his grandfather started at Crows Nest in 1935. In 2006 the store made the move to Brookvale.

Together with brother Luke, Chris has long been a fixture on the local retail scene and helped successfully move the store to it's current location where the duo have a reputation for delivering exceptional service.

Luke has since moved on and UK-born former mechanic Craig Patrick has brought his skills and experience of over 20 years in automotive and management roles to the business.

With such a long history in the industry and keen to promote local business, the duo have successfully established and expanded a number of Battery World franchises in the area.

They have a wealth of knowledge, as well as access to over 8000 products. So the team are bound to have advice and solutions to help you.

When you're planning your next trip or needing power solutions along the way, our friendly team of Batteryologists are here waiting to help or can come to you; they'll make sure that whatever you're into, your adventure is absolutely perfect.



Battery World Northern Beaches

5 Mitchell Rd Brookvale | 87 Darley St Mona Vale

02 9939 2439

02 9999 3313





THE ROCKPOOL PEOPLE

Mortgage & Financing Solutions

- ▶ Commercial Mortgages
- ▶ Residential Mortgages
- ▶ Funding for Property Development
- ▶ Business Finance
- ▶ Asset Finance

Call us for a free review of your debt situation:

02 8005 6001

info@therockpoolpeople.com

therockpoolpeople.com



Lord Wakehurst, officially opened the current premises on 17 December, 1938.

Unfortunately, during World War II, yachting in Pittwater and Sydney Harbour was disbanded. After the war, in 1947, the boatshed was increased in size, moorings were laid in Crystal Bay and Pittwater again came to life.

The Club purchased the adjoining property, Moonbar, on the western side of Mitala Street and converted the building into a Clubhouse. This land, previously owned by Mr. Ashley Buckingham, became known as Buckingham Palace, and it was a popular venue for Club members, with a lawn area and swimming pool.

Yacht racing on Pittwater in the sixties was gaining momentum, so it was decided that a new Clubhouse should be built on Green Point to cater for the larger patronage.

On 15 May 1968, probably the Club's most important function was held. His Royal Highness, Prince Phillip, the Duke of Edinburgh, visited to lay a foundation stone for the present Clubhouse. Unfortunately, due to torrential rain and a 60 knot southerly, Prince Phillip laid the stone by remote control from Moonbar. Regardless, it was a memorable day for members when this royal "sailor" joined them for lunch!

In the early 1970s an opportunity arose for our Club in the city to join The Sydney Club, formerly The Millions Club. By selling the city

property and developing Pittwater, it meant that members using the city premises could be happily accommodated in the luxurious surroundings of the Sydney Club almost next door and development could continue at Pittwater.

The RPAYC Clubhouse was erected on Green Point together with four marina arms on the western side of Green Point and additional hardstand areas.

The Club is justifiably proud of its achievements, having come a long way over its 152-year existence. It has become a well-respected Yacht Club around the world and an integral part of the community that it serves.

Were those early pioneers to see how their dream has turned out we feel they would be suitably impressed at just how far their magnificent Club has come and its future ahead.



Chia

Dr Marcus Chia
SHOULDER & ELBOW SURGEON

If you are struggling with your elbow or shoulder and would like more mobility and less pain, then you have found the right team.

As a shoulder and elbow Orthopaedic Surgeon with a background in Physiotherapy, my aim is to minimise surgical intervention for the treatment of arthritis, rotator cuff tear, instability, fracture and less common shoulder and elbow disorders.

Call for an appointment on 02 8014 4252
www.drmaruschia.com

Mona Vale | Frenchs Forest | Wahroonga | Cremorne | Norwest



The New Generation of Hospital Care & Rehabilitation

Arcadia Pittwater Private Hospital delivers a range of medical, geriatric, palliative care & rehabilitation services within a luxury hotel-style environment.

- Allied Health - Physiotherapy, Occupational Therapy, Speech Pathology & Dietetics
- Inpatient Rehabilitation & Outpatient Day Rehabilitation
- Inpatient Palliative Care Unit - for short term care & end of life care
- Hydrotherapy & Wellness Programs
- Hotel-style Amenities including Chef-led dining experiences
- Easy & secure free parking

We now have no gap arrangements with over 30 health funds.

Simply call our friendly reception staff to find out more.

P: 8919 3100 | **E:** info@arcadiapittwater.com.au
W: arcadiapittwater.com.au

HOSPITAL STAYS & REHABILITATION JUST GOT A LOT MORE COMFORTABLE!



**ARCADIA
PITTWATER**

Private Hospital



Clubhouse and Functions Rooms

If you're looking for a place to relax after a day's sailing (or even a hard day work!), or somewhere to meet friends or have your morning coffee, then head to The Alfred's Clubhouse.

We're family friendly, with excellent facilities. Best of all, a warm welcome awaits from our members and dedicated and conscientious staff who make our Club the special place that it is.

Enjoy a cup of great coffee or a glass of fine wine as you savour the picturesque views out over Pittwater.

Hungry? No problem. Filling meals and tasty snacks are available all day at reasonable prices with everything on offer from a simple sandwich to a lavish three-course meal to celebrate that special occasion.

Looking for a function space for that special memorable event or a conference to take your team out of the office? Look no further than the Alfred's. Our House Manager and team can arrange it all for you.

HALYARD'S BISTRO

Halyards Bar & Bistro has beautiful views out over the water and is the sailor's meeting place prior to and after racing. It's great for families as Halyards features a large, safe children's play area, next to our undercover BBQ. There's also a lawn area for the children.

Halyards Bar & Bistro is open from 8:00am daily for breakfast and lunch seven days a week. A full Chef menu and daily blackboard specials are available from Wednesday to Sunday. Dinner opening days vary depending of seasons.

Drop in for a drink or bite to eat and enjoy the sunset or enjoy a weekend breakfast or a casual lunch with friends overlooking Pittwater.

This room is available for smaller parties (up to approx. 30 pax) or the Annexe for larger events.

The Royal Prince Alfred Yacht Club

Events and Functions

Book with us today!



Contact us today:

The Royal Prince Alfred Yacht Club

16 Mitala St, Newport NSW 2016

Phone: 9998 3700

Email: functions@rpayc.com.au

Web: rpayc.com.au

ALFRED'S TABLE

For a superb restaurant experience, Alfred's Table is open on Friday nights from 6.00pm (last orders 8.30pm) downstairs in Halyards Annexe. Choose from an à la carte menu for a dinner in a more formal setting with clothed tables, mood lighting and wait staff service. Members receive a discount and birthday vouchers are accepted.

Bookings are essential. Please call reception (02) 9998 3700.

FAMILY FRIDAYS

For a fun social casual get-together with family and friends, Family Fridays in Halyards is the place to be. Bring the kids down to enjoy dinner and great entertainment for the kids, often themed. Open on Friday nights (check the schedule of events at www.rpayc.com.au) from 5.00pm downstairs in Halyards Annexe.

EDINBURGH LOUNGE AND BAR

The Edinburgh Lounge and Bar is classically furnished with a number of lounges and armchairs, including a cosy fireplace for those cold winter days and nights. The Alfred's library is adjacent, where Members are welcomed to borrow a book and read it whilst enjoying the panoramic waterfront views overlooking the water and the marina.





Friday night is a great time to visit and perfect for pre-dinner drinks with guests, with regular live music presented by talented, local musicians and Member's drink specials between 6pm and 7pm.

This room is great for cocktail functions and is also available for that special occasion.

ADMIRAL'S CUP ROOM

The Admiral's Cup Room has its own bar and can seat up to 70 guests. It's ideally suited for smaller meetings, functions or conferences.

With spectacular views and a balcony overlooking the water and the marina.

THE TERRACE

For a more relaxed function, the Terrace is available where you can hold a range of casual functions for anything up to 100 guests. This outside covered area is on the lower level and looks out over Pittwater.

PITTWATER ROOM

The Pittwater Room shares the Admiral's Cup Room bar and suits larger functions. Enjoying spectacular views over Pittwater, it has a large dance floor and projector screen and can accommodate from 80 to 200 guests seated or 350 cocktail-style.

LET US HELP

02 8036 2044

NBSKINMEDICS.COM.AU

1210/4 DAYDREAM STREET, WARRIEWOOD



SKIN MEDICS

by Northern Beaches Skin Cancer Clinic



SKIN REDNESS
UNWANTED MOLES
BLEMISHES & SUN SPOTS
RED VEINS
RECENT WOUNDS OR SCARS
ROSACEA & SENSITIVE SKIN
SKINCARE ADVICE & TREATMENT

A Centre of Excellence Dedicated to the Early Detection & Management of Skin Cancer

Certified in:

- ✓ Dermoscopy
- ✓ Skin Cancer Medicine
- ✓ Primary Care Skin Cancer Surgery

Almost all skin cancers can be treated if they are detected early.



Suite 1209/4 Daydream Street, Warriewood

(02) 9999 0336

www.nbscc.com.au

Ever thought of *Sailing?*

Discover the RPAYC SAILING PATHWAYS

Step 1
Learn to Sail

Kids Dinghy

Holiday Programs

Tackers 1

Tackers 2

Tackers 3

Youth/Adult Dinghy

Pacer / Laser Training

School Learn to Sail

Holiday Programs

Private Sessions

Adult Keelboat

Start Sailing
Keelboat Level 1

Private Sessions

Step 2
**Learn to
Race + Crew**

Intro Opti Green Fleet

Opti Green Fleet Training

Laser Green Fleet Training

Inter Opti Fleet Training

Dinghy Class Training
Laser / F11 / 29er / Pacer
49er / Multihull

School Team Sailing

Private Sessions

Start Racing
Keelboat Level 2

Private Sessions

Step 3
**Let's go
Racing**

Open Optimist Fleet

Laser Fleet

Advanced Dinghy Class

Inter Youth
Development Program

Youth Development Program

Start Racing
Keelboat and Spinnaker
Level 3

Private Sessions

Step 4
Club Racing

Centreboard Racing / Regattas / Fleet Racing / Match Racing / Keelboat Inshore / Offshore Racing / Cruising

Training Courses: • First Aid • Seminars

CREW REGISTER
*Jump on board
a boat*



For further
information contact
the sailing office
sailing@rpayc.com.au

02 9998 3700

16 Mitala St
Newport NSW
Australia 2106

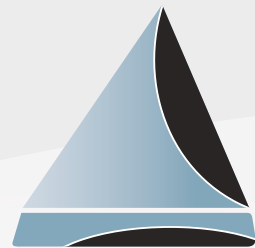
www.rpayc.com.au

Private Sessions through RPAYC Instructors

Dinghy Sessions | Keelboat Sessions | Fleet Sessions | Boat Plans | Cruising | Berthing

www.rpayc.com.au/sailing

DISCOVER
Sailing.org.au



SYDNEY MARINE
BROKERAGE



SYDNEY MARINE
BROKERAGE



Sydney Marine Brokerage is the exclusive Australian agent and distributor for Grand Soleil Yachts, Saga Yachts and Smuggler Ribs, in addition we are always on the lookout for pre-owned vessels to present to our extensive database.

Our head office is located at the Royal Prince Alfred Yacht Club, in the historic Jack Gale Building. Come visit us, and discover our members discounts for listings, and industry first listings packages.



www.sydneymarinebrokerage.com (02) 9997 7907 +61 (0) 411 424 514

Sailing Programme

The Royal Prince Alfred Yacht Club is one of Australia's leading Clubs within the sport of sailing and is regarded as one of the country's premier sailing Clubs.

YACHT RACING

The Club's sailing programme and activities reflect this standing, and are second to none. The Club takes pride in its ability to host high quality, exciting, fun and social events in a pristine environment. Our professional event administrators ensure that our yacht racing is innovative, safe and user orientated with a varied programme, combining inshore and offshore racing with racing conducted all year round. During the Twilight months the schedule of events sees the addition of a Women's Tuesday Twilight Series and a Thursday Twilight Series which is open to all.

Members and visitors of any age or ability can enjoy sailing through the Club's various classes, divisions, great sailing locations and events offered. The Club actively encourages safe sailing and actively pursues a range of initiatives aimed at minimising the risk to the sailors and boats competing.

Crew are always welcome to join races and an online crew and boat register is available

to match boat owners and crew together, be it casually or for an event's full Series.

The following is an outline of the events available at The Royal Prince Alfred Yacht Club. Visit www.rpayc.com.au for further information.

ANNUAL PROGRAMME

Club Marine Wednesday Series

- ▶ The Wednesday Series comprises of four seasonal Series held every Wednesday afternoon throughout the year. Wednesday races are fun and social and sees a range of yacht designs participate.
- ▶ The racing format is Non-Spinnaker, around the cans (fixed and or laid marks) inshore on Pittwater.
- ▶ Race length average: 120-150 minutes.
- ▶ Starting time: From 1400hrs.



MORE THAN JUST INSURANCE. BE REWARDED WITH CLUB MARINE.

When you join Club Marine you'll discover that boat insurance is just the beginning. Club Marine have been providing outstanding claims service to boaties of all kinds for more than 50 years and offer broad, flexible and affordable policy options to give you the cover you need. With Club Marine, you can have fun on the water knowing you're covered.

ALL CLUB MARINE MEMBERS HAVE ACCESS TO:



Club Marine Assist

Have peace of mind on and off the water 24/7*



Club Marine Member Rewards

Get discounts and benefits at favourite marine retailers



Club Marine Magazine

Enjoy Australasia's premier lifestyle marine publication



Club Marine App

Access the right boating information anywhere, anytime



Club Marine TV

Keep informed with expert boating and fishing tips from industry experts

GET A QUOTE TODAY



1300 00 CLUB (2582)



CLUBMARINE.COM.AU



Insurance is underwritten by Allianz Australia Insurance Limited (Allianz) ABN 15 000 122 850 AFSL No. 234708 of 2 Market Street, Sydney. Club Marine Limited (Club Marine) ABN 12 007 588 347 AFSL No. 236916 is a related body corporate and issues boat insurance as agent of Allianz. *Club Marine Assist is provided by Club Marine Limited. Assistance services are provided by AWP Assistance Australia Pty Ltd trading as Allianz Partners ABN 52 097 227 177. Terms of service are available on clubmarine.com.au.

SUMMER PROGRAMME

Tuesday Women's Twilight Series

- ▶ The Tuesday Women's Twilight Series is held over the Spring and Summer months making use of the lasting daylight. Racing is fun and social and offers the choice of racing with spinnakers or without. The Series is held on alternative Tuesday evenings.
- ▶ The rules of the Women's Twilight Series allow for only one male per boat with that crew not permitted to helm the boat throughout the race. Crews often follow up their evening with dinner in Halyard's Bistro with fellow crew, guests and great weekly prizes.
- ▶ The racing format includes Spinnaker and Non-Spinnaker, around the cans on inshore on Pittwater.
- ▶ Race length average: 90 minutes.
- ▶ Starting times: From 1755hrs



Thursday Twilight Series

- ▶ The Thursday Twilight Series is held over the Spring and Summer months making use of the lasting daylight. Racing is fun and social suited for any ability. Crews return after the finish of the race for dinner in Halyards Bistro with fellow crew and guests and great weekly prizes.
- ▶ The racing format includes Spinnaker and Non-Spinnaker, around the cans racing inshore on Pittwater.
- ▶ Race length average: 90 minutes.
- ▶ Series: The Thursday Twilight Series is held each week during daylight savings and is split into a Spring and Summer Series.
- ▶ Starting times: From 1755hrs.

COME CREWING



Contact us today:

The Royal Prince Alfred Yacht Club

16 Mitala St, Newport NSW 2016

Phone: 9998 3700

Email: sailing@rpayc.com.au

Web: www.rpayc.com.au/sailing/crew-or-boat-finder

Pittwater Saturday Inshore Series

- ▶ The Pittwater Inshore Series is held on Saturday over Spring and Summer with 1 to 2 races scheduled each month. The Series caters for all types of keelboats with a number of handicap scoring options available.
- ▶ The racing format includes Spinnaker and Non-Spinnaker, around the cans racing inshore on Pittwater.
- ▶ Race length average: 120-180 minutes.
- ▶ Starting times: From 1330hrs.

Mini Saturday Regatta Series for Sportsboats and One Design Classes

- ▶ The Mini Regatta Series caters for Sportsboat and One Design Classes and is a Series of three races per round featuring short windward leeward sprints. The Series is held on Saturday inshore on Pittwater with 1 to 2 rounds scheduled each month. A great Series for both experienced and new crew to regatta style racing.

Don't have a suitable boat? Lease a Club Elliott 7 from the Club. Conditions apply.

- ▶ The racing format sees a laid course of marks with up to three Windward/Leeward sprints held for each round.
- ▶ Race length average: 35 minutes per race.
- ▶ Starting times: From 1200hrs. Seasonal weekend regattas from 1100hrs.

Offshore Saturday Events

Estuary Pointscore Series

- ▶ The Estuary Series offers competitors the experience of offshore day sailing with a mixture of windward/leeward and passage courses on Broken Bay. Held on Saturday over Spring and Summer with 1 to 2 races scheduled each month.
- ▶ Racing format is designed for spinnaker racing and includes a mixture of laid and fixed marks up to 2nm offshore and the waters of Pittwater estuary.
- ▶ Race length average: 3-4hrs
- ▶ Starting times: From 1315hrs.

Short Ocean Pointscore Series

- ▶ The Short Ocean Pointscore Series (SOPS) is the next step up from estuary races with courses starting and finishing in Broken Bay and races covering the waters between Terrigal to the north and Longreef to the south. Held on Saturday over Spring and Summer with 1 to 2 races scheduled each month. The Series allows crew to experience offshore racing in a daylight coastal environment for a competitive race experience or in preparation for longer offshore races like those in the Club Marine Blue Water Pointscore Series.
- ▶ The racing format sees races consist of a variety of windward/leeward offshore and passage style races up to 8+nm offshore.
- ▶ Race length average: 4-5hrs
- ▶ Starting Times: From 1200hrs.



**Lejen
Marine**

Inflatable Boats / RIB'S

Lejen Marine P/L
1/6 Taronga Place
Mona Vale NSW 2103
T: 02 9979 4533
E: info@lejenmarine.com.au
W: www.lejenmarine.com



Club Marine Bluewater Pointscore Series

► The Club Marine Bluewater Pointscore Series (BWPS) sees a variety of long offshore races conducted along the east coast of Australia between July and April. Each race is unique and offers crew the opportunity to develop their navigational, weather and boatmanship skills.

► The race format covers a wide range of conditions in a variety of courses between 18 and 630 nautical miles. There is a mixture of multiple days, overnight (Category 1 & 2) and day events (Category 3).

► Starting times vary depending on the event destination.

WINTER PROGRAMME

Wednesday Waterford Series

► The Wednesday Waterford Series is scheduled throughout the Winter months. Wednesday races are fun, social and competitive races.

► The racing format is Non-Spinnaker, around the cans (fixed and or laid marks) inshore on Pittwater.

► Race length average: 120-150 minutes.

► Starting time: From 1400hrs.

Lion Island Saturday Series

► The Lion Island Series is held on each Saturday during May and is characterised by the boats sailing around Lion Island. This is a fun, social and competitive event that commences during the Winter season of racing. Crews and guests return to Halyards bistro post-racing for social get-together and the weekly presentation.

► The racing format includes both Spinnaker and Non-Spinnaker, around the cans and racing on Pittwater and Broken Bay.

► Race length average: 120 minutes.

► Starting times: From 1200hrs.



*Celebrating
30 years*

Yacht Rigging

Pool Fencing / Balustrading

**New Website & Online
Shop Coming Soon!**

Shading

Deck Hardware

Rigging Inspections

Precision Spars, Yacht & Architectural Rigging Systems

Riggtech is a quality supplier, fabricator and fitter of marine and architectural rigging systems including custom spars, painting, rigging, rope technologies, yacht fittings, shading and balustrading.

No matter the size of boat or job, our expertise and skill ensures that you get more than you pay for every time.

Approaching every job with passion and care, we strive to help you achieve smooth, precise, reliable sailing, regardless of the conditions you'll face.

Riggtech provides marine services and components to dingies, club cruisers-racers, world-leading Ocean racing yachts and America's Cup syndicates.

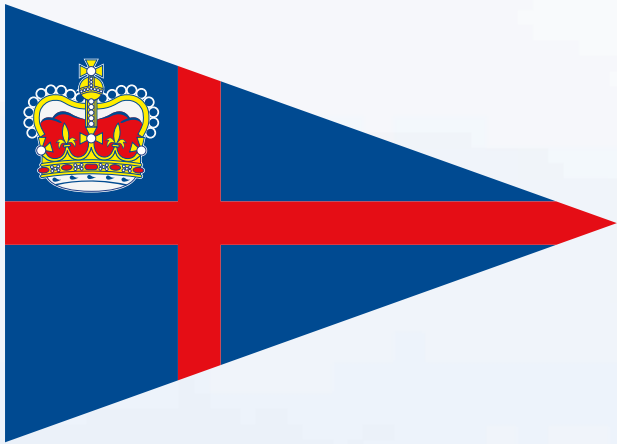
Coupling the knowledge of marine products and materials we have become successful at constructing high quality architectural systems suitable for a wide range of uses in shading, balustrading, custom fabrication, pool fencing, flagpoles or hydraulic systems.

Our superior factory facility at Mona Vale houses, a fabrication workshop and a 30m spray booth, which enables us to efficiently complete jobs of all sizes.

Today working with his exceptional fabricator Noel, and Phil's sons Adam and Jack, Phill has built Riggtech into a business known for its expertise, integrity and honest value.

On land or sea you can be assured of the best results with Riggtech. For an obligation-free quote or experienced professional advice, simply email, call or swing by the Club to meet us.

Quality. Precision. Reliability.



Winter Saturday Series

► The Saturday Winter Series consists of a handicap start for all boats which makes way for an exciting finish as boats cross the finish line at approximately the same time. A handicap start is when boats are allocated an individual starting time of day. Results are calculated by place over the line. Races take place during June and July.

► The racing format includes both Spinnaker and Non-Spinnaker, around the cans racing inshore on Pittwater.

► Race length average: 120 minutes.

► Starting times: Start times are dependent on individual boat handicaps, with the first boats starting at 1200hrs. Starting handicaps are released by 0930hrs on the day of each race.

Two Handed Sunday Series

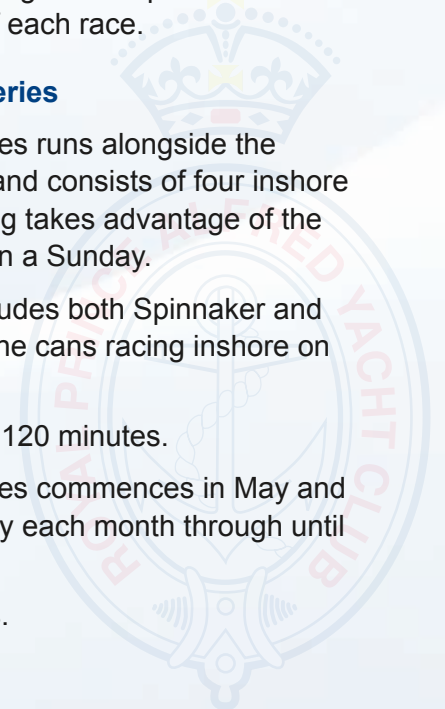
► The Two Handed Series runs alongside the Women's Winter Series and consists of four inshore races on Pittwater. Racing takes advantage of the Winter morning breeze on a Sunday.

► The racing format includes both Spinnaker and Non-Spinnaker, around the cans racing inshore on Pittwater.

► Race length average: 120 minutes.

► The Two Handed Series commences in May and is held on the first Sunday each month through until August.

► Starting time: 1000hrs.



The Royal Prince Alfred Yacht Club

You're invited to Sponsor an Elliott 7

Branding on
hull & sails
—
Coverage
throughout
the year
—
Support
Youth
Development

Contact the Sailing Office for T+C's: 9998 3700 or marketing@rpayc.com.au

Women's Winter Sunday Series

► The Women's Winter Series is run alongside the Winter Two-Handed Series and consists of four inshore races on Pittwater. Boats contesting in the Women's Winter Series must have a female helm. The race takes advantage of the Winter morning breeze on a Sunday.

► The racing format includes both Spinnaker and Non-Spinnaker, around the cans racing inshore on Pittwater.

► Race length average: 120 minutes.

► The Women's Winter Series commences in May and is held on the first Sunday each month through until August.

► Starting time: 1000hrs.

Early Bird Saturday Series

► The Early Bird Series consists of a handicap start for all boats which makes way for an exciting finish as boats cross the finish line at approximately the same time. A handicap start is when boats are allocated an individual starting time of day. Results are calculated by place over the line. Races take place during July and August.

► The racing format includes both Spinnaker and Non-Spinnaker, around the cans racing inshore on Pittwater.

► Race length average: 120 minutes.

► Starting times: Start times are dependent on individual handicaps, with the first boats starting at 1200hrs. Handicaps are released by 0930hrs on the day of each race.

Winter Sunday Dustbuster Series

► The Winter Dustbuster Series is an early morning event of fast paced one design racing featuring short windward leeward sprints. Racing caters for both experienced and new one design and sportsboat teams. The Dustbuster Series commences in May and is held on the second Sunday of each month through until August.

► The race format is a laid course with up to three Windward/Leeward races held for each round.

► Race length average: 35 minutes per race.

► Starting times: From 0830hrs.

WANT TO KNOW MORE?

Visit the Yacht Racing pages of The Alfred's website, www.rpayc.com.au/sailing, where you can also see (and download) the annual Sailing Handbook for a schedule of all events.

Junior, Youth and Adult Centreboard Sailing Programme

The Royal Prince Alfred Yacht Club is proud in the part it plays in developing the grassroots and next generation of sailors.

Our aim is to help young sailors realise their dreams, whether their ambitions stretch to the pursuit of Olympic glory, ocean racing, or merely to enjoy a sail with friends and family.

Centreboard sailing also welcomes adult sailors coming back into the sport or wishing to sail with their family. Priority is given to learning the basic sailing skills through the Club's training programmes in a safe, nurturing and fun environment. Having helped kids and youth develop a love for the water and sailing skills, the opportunities to progress through the sailing pathway is endless and enjoyable for all to see how their sailing journey develops through to Club, state, national or event international competition.

No pressure is put on the individual, those who want to follow their elite racing dreams will find there is no shortage of fellow Members to help them along their way.

CENTREBOARD DIVISION

The crucial question, of course, if you think sailing would benefit your child or they are showing an active interest, is: where to start?

As a junior (7yrs+), generally there are two ways to acquire the basic skills needed. Many learn from Mum and Dad or another keen family member, others progress through the Club's Tackers (an Australian Sailing Kids Learn to Sail Programme) training programme held over School Holidays & Term Time Sunday sessions.

The next step is the Club's Green Fleet groups. Green Fleet is designed to introduce a child to racing and covers the basic concepts associated with competition sailing. Kids learn together the World Sailing Racing Rules, sailing a course and start sequences whilst further developing their boat handling skills and wind awareness.

YOU'LL BE ALL SMILES AFTER A VISIT TO BEACH DENTISTS

At Beach Dentists, we take care of your whole family's oral health. Based on Sydney's beautiful Northern Beaches, our dental practice is dedicated to delivering the best smiles. From initial consultations to regular check-ups, we make sure our customers feel comfortable and welcome.

Bare your biggest grin

We offer a wide range of services from fillings and root canals to dental implants:

- ▶ Preventative dentistry
- ▶ Inlays & onlays
- ▶ Mouthguards
- ▶ Crowns & bridges
- ▶ Dental sleep apnea
- ▶ Cranio facial pain
- ▶ Teeth whitening
- ▶ Veneers and implants
- ▶ Injectable facial fillers

Our highly qualified dentists develop personalised treatment plans, so all of our customers receive expert, tailored care. Whether you're looking to whiten your smile, or require a more complex dental procedure, our friendly staff will ensure you receive the best treatment available.

Get in touch to book an initial consultation

Suite 4, 326-330 Barrenjoey Road, Newport
(02) 9999 1714 | beachdentists.com.au



New patients welcome



THE ROYAL PRINCE ALFRED YACHT CLUB

CENTREBOARD SAILING

Development Pathway

Learn to Sail



Learn to Sail
Tackers 3
- Ozi Opti
- 7 - 14 Year olds



Learn to Sail
Tackers 2
- Ozi Opti
- 7 - 14 Year olds



Learn to Sail
Tackers 1
- Ozi Opti
- 7 - 14 Year olds



Holiday Program
Four Days
- Ozi Opti
- Hobie Waves
- 7 - 14 Year olds

Club Racing



Junior Development Squad - Inter Fleets
Spring and Summer Period
- Optimist
- Laser 4.7 Radial



Junior Development Squad - Green Fleet
- Spring and Summer
- Optimist
- Laser 4.7



Junior Development Squad - Open Fleets
Singlehanded
- Optimist
- Laser Classes

Doublehanded
- Feva XL
- Many Junior
- Pacer
- Flying 11
- Nacra 15
- RS200
- NS14
- 29er
- 420

Regatta Racing

Class, State, National and World Championships



Youth and Adults Racing

Singlehanded
- Optimist
- Laser Classes
- Finn

Doublehanded
- Feva XL - Nacra 15
- Many Junior - RS200
- Pacer - NS14
- Flying 11 - 29er
- Taser - 420

Contact us today:

The Royal Prince Alfred Yacht Club
16 Mitala St, Newport NSW 2016

Phone: 9998 3700 • Email: sailing@rpayc.com.au • Web: rpayc.com.au





General insurance made easy to understand

Northern Beaches local insurance adviser offers custom designed packages to suit you and your business.

We navigate the insurance leaving you doing what you do best – running your business.

We offer solutions for:

- ✓ Public & Products Liability
- ✓ Business Packages
- ✓ Construction
- ✓ Professional Indemnity
- ✓ Plant & Equipment
- ✓ Commercial Property Owners
- ✓ Commercial Motor
- ✓ Prestige Home & Contents
- ✓ Pleasurecraft
- ✓ Marine Liability & Ship Repairers

CONTACT AMANDA HOLST 0415 510 955 | admin@beachesinsurance.com.au

beachesinsurance.com.au

A Corporate Authorised Representative of Insurance Advisernet Australia Pty Ltd. Authorised Representative Number 1250534 – CAR Number 1250469.

FAMILY FRIENDLY
BOUTIQUE
FITNESS IN
THE HEART OF
NEWPORT



BOOK A
7 DAY **FREE**
TRIAL

perfectFIT^p

**40+ High Intensity Interval Training (HIIT)
group classes per week.**

For the best Personal Training care,
results guaranteed, book your Complimentary
BODY TRANSFORMATION CONSULTATION today!

perfectfitpeople.com

Or call Mandy,
Perfect Fit's Founder and Owner,
on 0412766577



New to the Club is the Australian Sailing 'Out There Youth' programme. This programme is an entry point into on water activities be it sailing (dinghy & keelboat), windsurfing, stand-up paddle boarding or powerboating. It's designed around 11-17yr olds to give an experience of a variety of on water activities.

Once ready, the instructor will encourage sailors from the Club's various activities to participate in Sunday afternoon racing. There are instructors on hand to observe and help participants get the hang of racing on a course, where other boats and classes are racing also.

Once the sailor is ready to participate in Sunday afternoon Club racing on a regular basis and without on course coach support, they can simply enjoy the regular Sunday

afternoon Club racing in their chosen Class. Alternatively, they can take up a crewing role in a double handed Class or if further development training is sought, they can pursue a third-party coaching provider to further develop their sailing.

It's not all about medals, glory and international recognition it's just about having fun in a supportive and safe environment and allows for kids, youth and adult sailors to meet and become a community.

The Centreboard Dinghy Division is an active family-based community. Using supported international dinghy classes, there is an opportunity for the whole family to spend time on the water. Parents and kids can race alongside one another while other family



members have the opportunity to spend time on the water by volunteering with race management duties on a weekly basis.

Regular racing and training is run in a highly professional manner without losing the family fun of a volunteer-based system.

The facilities and knowledge within the Club allow sailors to take their sailing to whatever level they desire. The Club's centreboard dinghy sailors have a long history of success at a local, state, national, and international level.

Racing at the Club takes place most Sundays throughout Summer, whilst the Ice Breaker Series provides regatta sailing once a month through the Winter season.

The Club has a strong focus on international one-design classes in its dinghy fleet. By following the Australian Sailing Youth Pathway, young and adult sailors are afforded the best opportunity to progress their skills and challenge themselves.

The natural progression from class to class that exists at the Club allows for a seamless transition into dinghy and keelboat sailing in later life. The Club's training offerings ensure that a child can start sailing at the age of 7 years old and continue a lifetime's enjoyment of the sport of sailing.

Single-handed classes featured are the International Optimist (Green, Intermediate, and Open), Laser 4.7, Laser Radial and Laser Full rig, Moths and Waszp. While the Flying 11, 29er, Pacers and Hobie Waves and other multihull classes help develop the skillsets needed as part of a crew.

If you have a child who is interested in sailing, please do not hesitate to get in touch. Contact the sailing office by phone: (02) 9998 3700 or email: sailing@rpayc.com.au

SUSTAINABLE CONSCIOUS ARCHITECTURE

Suite 20 Bayview Anchorage
1714 Pittwater Road Bayview NSW 2104
61 2 9975 5626 or 9999 5737
www.sueconnor.com.au

Established over 28 years ago, Sue Connor Architects has the expertise and experience to bring your commercial or residential project to fruition. We are committed to community, well-being, thermal comfort and ecologically sustainable design. Our philosophy facilitates the creation of innovative, ethical and practical architecture that is uplifting, engaging and empowering.





The Royal
Prince Alfred
Yacht Club
Welcomes You





German built
Effortless sailing in style

Models: 315, 348, 388, 418, 458
508, 548, 588, 675



Italian luxury, style
& performance

Models: 37, 44, 47, 50, 55, 58
64RS, 68RS, 80RS



The perfect mix of casual
racer and comfortable cruiser

Models: 30 OD, 34, 38, 42, 46



Timeless elegance for
extended cruising

Models: Deck Saloon 41, 45 & 54
Classic 41



Regatta and Championship Events

The Royal Prince Alfred Yacht Club is committed to providing competitors and their guests with the best and most enjoyable experience on water and off and nowhere is this philosophy more evident than in our hosting of regattas and major sailing events.

The Club has long been regarded as an excellent choice for an organiser seeking all the key ingredients needed for a successful event: spectacular location, good racing waters, superb sailing and hospitality facilities and a Club that is run by friendly, approachable people yet in a professional manner.

We are located on one of the world's best waterways for sailing - with inshore sailing on spectacular Pittwater, and coastal sailing in magnificent Broken Bay and coastline.

It makes for a breath taking backdrop to any racing activities and with all its associated attractions there can be few more spectacular venues for yachting or centreboard regattas and major sailing events.

After the day's racing is in the books, get together with fellow competitors in the Clubhouse for refreshments and entertainment. If that's not enough excitement

for you, the world's best capital city is right there on your doorstep!

The Royal Prince Alfred Yacht Club has a dedicated and hard-working volunteer race management team who have considerable experience to draw upon and it is this professionalism that enables organizers of important events on the national and world stage to feel assured that their event is in good hands.

With regular State and National events held each year and International Class and Youth events as well, the Club looks forward to hosting an event for you.

Contact the Club about hosting your next Class event or sailing day.

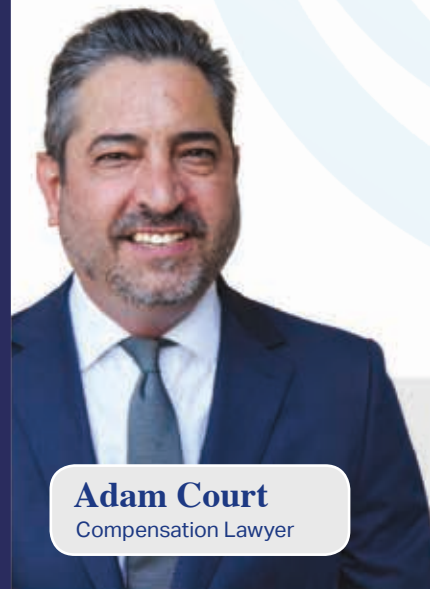
COMPENSATION • FAMILY LAW • CONVEYANCING

"NO WIN, NO FEE" *

- ✓ Injury compensation claims
- ✓ Motor accident claims
- ✓ Work injury claims
- ✓ Negligence claims

FIRST CONSULT **FREE**

- ✓ Property settlements
- ✓ Parenting orders
- ✓ Divorce applications
- ✓ Wills, probate and estate litigation



Adam Court
Compensation Lawyer



Rossana Court
Family Lawyer

Call 1300 734 737

www.courtlegal.com.au

Northern Beaches, North Sydney, Parramatta

*workers compensation claim conditions apply



Cruising

If you enjoy sailing at a leisurely pace, relaxing in an idyllic (maybe even exotic) location and even enjoying the occasional sundowner, then cruising is for you!

Cruising activities are organised by the Cruising Committee for all members and their sailing friends. The aim of these events is to encourage participation in organised cruise events, to share interesting and educational sailing information and to give Club members more opportunities to meet other members and use the facilities of the Club.

The Cruising Committee organises a comprehensive event schedule which includes education events with expert and informative speakers, social events and sailing activities.

Enjoyable social evenings, guest speakers, and more are held on the first Friday of each month. All Club members and friends are welcome to attend. At these evenings, the Cruising Committee organises speakers who are experts on a diverse range of subjects from cooking on board, tails of the sea, safety, navigation, marine authorities, heavy weather sailing or electronics on board, to members or guests sharing experiences of cruising to far-flung cruising areas.

Inshore cruises in the Pittwater/Broken Bay/Hawkesbury area, with their myriad of secluded bays, are arranged on a regular basis. Most weekends will reveal cruising yachts from the Club enjoying this area. Those who cruise together develop strong friendships and many social activities revolve around talk about the last or the next cruise. Regular Alfred's Cruising events explore this area.

A post-Christmas cruise is organised each year to a coastal destination over a period of around two weeks. Sailing is generally planned on the basis of reaching the day's destination by mid-afternoon in order to enjoy a relaxing evening.

Regular VHF Radio skeds are maintained between boats. Cruise planning is undertaken with the acknowledgement that cruising sailors do not venture out in unsuitable weather conditions.

Long weekend/public holiday coastal cruises can include destinations such as Newcastle, Lake Macquarie or Port Stephens or Sydney



Harbour, including seeing Vivid, Port Hacking or Jervis Bay. Timing may include a few extended days. A cruise to Sydney Harbour may have its ultimate destination at the fish markets, the historic explosives storage area at Bantry Bay or an exploration of the Lane Cove River.

Long coastal cruises are organised every two or three years and destinations may range from the Whitsundays to Lizard Island or Yamba and the Clarence River, to the north and to Eden and Hobart in the south. Timing can be anywhere from two to five months.

Cruising in a group is not only a great way for new members to make new friends, it offers the inexperienced yachting the added reassurance of knowing there will be someone to add support and assistance should the unexpected happen. This shared knowledge strengthens the group as a whole and the bond between them.

All cruising activities are supported by an extensive Seminar Series and, whether it is your first cruise or you are very experienced, the Cruising Committee endeavours to have something for you.



Elanora Heights medical practice

Elanora Heights Medical Practice is a modern and caring family medical practice. We believe in taking a preventative and proactive approach to healthcare. Our close-knit team works together to help our patients achieve optimal health tailored to individual needs.

Our GPs are extensively trained diagnosticians skilled at providing whole-person care. We are also pleased to provide extended services to our patients including a Specialist Paediatrician, Psychologists, Chiropractor, and skin cancer screening and treatment.

New patients are welcome!



**Open
7 days**

**Easy
online
booking**

Opening hours:
Weekdays 7am - 6pm
Weekends 8am - 4pm

Call today:
02 8397 8190

Book online:
elanoramedical.com.au

Easy street-level access
Shop 3, 69 Kalang Road, Elanora Heights



SPECIALISING IN HIGH QUALITY MARINE AND CORPORATE APPAREL

We provide a unique personal service in outfitting your team, crew or business.

With 20 years experience in the industry we will work alongside you to create a look and product to be proud of. We offer fast and convenient solutions at a competitive price.

Our excellent range of brands include Musto, Henry Lloyd, Dubarry, Sporte Leisure and Harvest. Via embroidery or print, transfers or complete custom production, we will help you create the perfect look.

FOR YOUR CUSTOMISED GEAR, CONTACT US NOW.

0406 622 992 | info@mistralclothing.com.au

0412 561 778 | mistralclothing.com.au



Wish you were boating more often?

- ✓ Minimum 34 days boating per year + unlimited standby access
- ✓ Hassle free boating: Professionally managed walk on walk off
- ✓ Easy to use online booking system
- ✓ At the end of the syndicate term, owners receive an equal share of the boat's net sale price
- ✓ Option to exit the syndicate early
- ✓ Affordable monthly fee covers ALL the boat's outgoings

Metro Mirage Hotel Newport

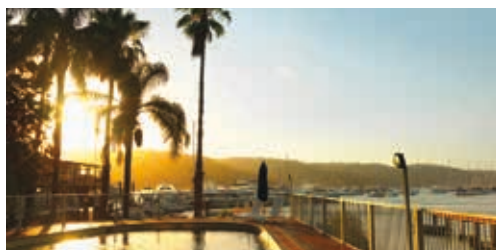
Breathtaking Pittwater views, great dining and leisure activities just 10 minutes' walk from the RPAYC. The perfect choice for your next weekend getaway, pre or post sailing stay or corporate or private event venue.

- Four versatile and spacious function rooms
- Restaurant or casual poolside dining options
- Choice of Waterfront, Spa and Family Rooms

MEMBER OFFER

Book online at www.metrohotels.com.au and enjoy 10% off our best flexible rate or 5% off selected hot deals with the following code.

PROMO CODE: RPAYC



2 Queen's Parade West, Newport 9997 7011 newport@metrohg.com metrohotels.com.au



Sail Training: On-water & Shore-based

The Royal Prince Alfred Yacht Club provides the largest Sailing School on Pittwater.

As an accredited Australian Sailing Discover Sailing Centre the Club offers training programmes and courses to meet the needs of beginners through to experienced sailors delivered by nationally qualified Instructors and Coaches.

Alfred's Training seeks to help you achieve your sailing goals, gain confidence on the water, whether you are Grand Prix racing or cruising up the coast. Offering options for kids through to adults, dinghies through to yachts, and high performance racing to first aid and sea safety, we can help you develop whatever skills you need.

We specialise in the delivery of courses for beginner sailors (and new boat owners), boat handling skills and cruising through to racing skills and shore-based professional qualifications.

Your training takes place on the water and in our modern training facility, the Jack Gale Centre, named after Life Member Jack Gale in recognition of his 60 years of service to the Club.

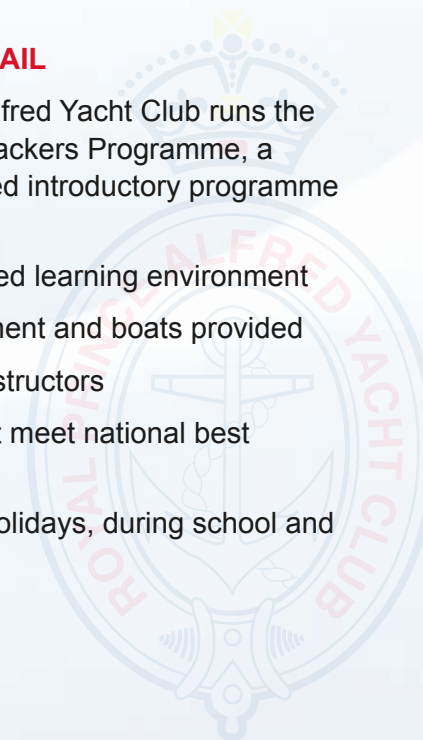
Our structure allows participants to move through the courses at their own pace and ability in an enjoyable environment.

Below is a brief summary of our courses: to explore the possibilities more thoroughly, jump onto rpayc.com.au/courses or come and visit the Sailing Office!

KIDS LEARN TO SAIL

The Royal Prince Alfred Yacht Club runs the Australian Sailing Tackers Programme, a nationally recognised introductory programme for 7-12 year olds.

- ▶ Fun, games-based learning environment
- ▶ All safety equipment and boats provided
- ▶ Fully qualified instructors
- ▶ Safety boats that meet national best practice
- ▶ Courses in the holidays, during school and after school term





JUNIOR SAILING DEVELOPMENT

After learning the basics of sailing in the Tackers Programme, the Club offers juniors a natural progression and a number of stepping stones to allow them to progress at their own pace and pathway.

- ▶ Optimist Green Fleet – introduction to racing at a very basic level. Rules, course and start sequences of competition sailing.
- ▶ Optimist Coaching – gain more on-water experience and build on the skills learnt in Tackers and Green Fleet levels.
- ▶ Laser Green Fleet – an alternative but equally beneficial option for children (and adults) to learn to sail a Laser or to develop their boat handling skills.

- ▶ Competition at Club and inter-Club level with Club coaching support.
- ▶ Further sailing development is provided by third party industry leaders in coaching.

YOUTH OUT THERE PROGRAMME

New for 2019 this Australian Sailing programme is designed for youth ages 11-17yrs. It's all about experiencing on water activities. A great new entry point for those new to sailing or wanting to try a variety of on water activities with friends.

There are four levels of the programme which is tailored to the participants and age groups.

YOUTH DEVELOPMENT PROGRAMMES

The Royal Prince Alfred Yacht Club's Youth Development Programmes (YDP) was pioneered in 1995 to help develop and enhance the sailing skills of our young athletes, as well as providing a pathway for sailors aged between 13 and 24 in Club, state, national and international events.

The Club's commitment to youth sail training has resulted in the creation of some of the world's best sailors including the likes of dual America's Cup winner James Spithill.

In 2014 the Club continued its commitment to the development of youth sailing by commissioning and launching a new fleet of keelboats, the Elliott 7, which carry a crew of four or five. With a fleet of eight identical boats, the Youth Development Programme not only improves existing sailing skills in both fleet and match racing, but also helps create a standard knowledge base for youth sailors in a wide variety of disciplines and roles, most importantly friendship and team work.

Upon graduation of the training programme, athletes are encouraged to participate heavily in Club, interclub and regional events to acquire valuable experience in keelboat racing.

There are two levels to the programme, Intermediate Youth Development (14-16yrs) and Youth Development (16-23yrs). Squads are selected to represent the Club at specific youth events across Australia and Internationally.

The programme runs from April through to October and applications are open to members and non-members.



The Royal Prince Alfred Yacht Club

Fitness Centre



JOIN TODAY

The focus of Sailfit will be to create an environment that is welcoming and results driven whether your objective is general fitness, sailing related or weight loss. Members may use the facility independently, engage a personal trainer or join a class.



Contact us today:

Tana Anderson (Supervisor)
0478 034 659
tana.anderson@rpayc.com.au

Dan Cook (Trainer)
0431 834 242
danc@rpayc.com.au



ADULT KEELBOAT PROGRAMME

An introduction to sailing for the first timer to develop racing and spinnaker skills on the Club's fleet of Elliot 7s.

- ▶ Discover Sailing Sessions, an introduction to sailing.
- ▶ Start Crewing, Start Helming, Start Skippering, Start Spinnakers and Start Racing following a nationally recognised syllabus.
- ▶ Officially certified training with Australian Sailing.
- ▶ Private Sessions are available with qualified and experienced instructors.
- ▶ Fully qualified instructors, with a 1:4 ratio (instructor to participants).

SCHOOL SAILING

RPAYC provides sailing opportunities for more than 250 school students a week during Terms 4 & 1!

- ▶ High School learn to sail.
- ▶ High School teams racing.
- ▶ High School Keelboat training.
- ▶ Primary School learn to sail.
- ▶ Primary School fleet racing.
- ▶ Interschool teams racing events.

Visit the Club's website, www.rpayc.com.au/courses for further information, details of current courses and how to book. If you have any questions, please do get in touch. Call us on (02) 9998 3700 or email: sailtraining@rpayc.com.au



askerrobertson is a collaborative Northern Beaches build and design team specialising in quality residential alterations & new houses. With over 25 years experience in the Australian and international design industry we seek to solve problems using innovative and sustainable solutions producing carefully crafted, inspiring buildings and interiors

askerrobertson
design + construction

Mia Asker, Designer

0411 956 242 mia@askerrobertson.com.au

Simon Robertson, Builder

0411 956 512 simon@askerrobertson.com.au

askerrobertson.com.au

Looking for a local accountant?

Brett Dunstan Accountancy is an accounting firm in Public Practice focusing on client needs with the aim to educate and advise clients in regard to better business and personal practices.

bda
brett dunstan accountancy

Offering expertise in....

- Individuals, Sole Traders, Partnerships, Trusts, Companies & SMSF's
- Entry & Exit Strategies
- Strategic Planning
- Chartered Tax Adviser
- Xero Advisor

02 9979 5710

reception@bdaccountancy.com.au

Suite 49 2nd Floor MVB Centre
90 Mona Vale Road, Warriewood

bdaccountancy.com.au



The original Australian distributor of



Propspeed is a non-toxic metal coating, internationally proven to discourage marine fouling on all submerged metal surfaces.

- Propellers
- Thrusters
- Sail Drives
- Rudders
- Trim Tabs
- Lights
- Shafts
- IPS Drives
- Keel Coolers
- Struts
- Poda Drives

**07 3807 4422 | salesaust@qep.com
www.qep-marine.com.au**

Gymnasium Services

Sailfit Objective: The focus of Sailfit will be to create an environment that is welcoming and results driven whether your objective is general fitness, sailing related or weight loss.

Members may use the facility independently, engage a personal trainer or join a class.

TANA ANDERSON – SAILFIT SUPERVISOR

With a wealth of experience and knowledge in the health and fitness industry, plus years of playing tennis at an elite level, Tana serves her Ace Game in managing the services available at the Club's Gymnasium. She has spent the last 10 years working with sailors of all ages and levels and is committed to providing the best sailing fitness programme in the world. Tana's passion lies in educating her clients on a holistic and healthy view of health and fitness guiding them through a nutrition and exercise programme to suit their specific needs. She

loves nothing more than helping her clients to achieve amazing results they never thought possible.

DAN COOK - TRAINER

Dan comes with a wealth of knowledge and experience having been involved in the fitness industry for a number of years as a gym operator and Personal Trainer. He focuses on delivering fun and results-driven 1on1 personal training sessions and challenging group exercise for sailors. Dan specialises in weight loss and nutrition, rehabilitation, strength training and sailing specific strength and conditioning.



GROUP EXERCISE TIMETABLE

- ▶ Fit to Sail and the Laser Training Group (with Dan) a high intensity and challenging class specifically designed for sailors and those who would like to get the most out of their training. There is an emphasis on endurance and strength in particular core and lower back.
- ▶ Advanced strength and conditioning (with Tana) using advanced techniques in weight training, interval training, boxing and more to challenge you to take your fitness to a new level. Prior weight training experience necessary and must be prepared to work HARD!
- ▶ Functional Movement and Conditioning (with Tana) using movements that make you stronger and more agile for everyday life, this class should be a staple in every person's

programme. Focuses on increasing movement and strength through flexibility, mobility, balance, strength and stability work.

- ▶ Ladies' Circuit Training Class (with Tana) want to feel toned, fit and stronger than ever? Using a mixture of cardio, strength, boxing, core stability and other various methods our fit n fab classes are designed specifically for women. Open to any level and age.
- ▶ HIT and Strongman Class (with Tana) this is an intense, strength based class working on advanced weight training methods to produce big results. Hard work, lots of learning and even more laughs! Must have previous weight training experience.

Get in touch...

Contact Tana on 0478 034 659

Contact Dan on 0431 834 242

Too busy to get your car to the mechanic?

GDL Automotive offers a complimentary pick up service from anywhere on Sydney's North Shore.

SIMPLY CALL US TO BOOK (02) 9979 5933



GDL Automotive Services
02 9979 5933

www.gdlauto.com.au



RETIRE ON THE NORTHERN BEACHES



**1 BEDROOM
APARTMENTS
FROM
\$495,000***

PROUDLY AUSTRALIAN FAMILY OWNED

MONA VALE BOUTIQUE RETIREMENT LIVING

Modern 1 and 2 bedroom units in sought after village just moments from Mona Vale Beach and Pittwater Place Shopping Centre.

Enjoy a hassle free, independent lifestyle with optional assisted living services to free up your time to enjoy social clubs, and on-site facilities such as heated swimming pool, indoor bowls, hairdresser and dining room.

Call to arrange an inspection (02) 9979 6517



**Baldwin
LIVING**
Seabeach
Gardens

1 Seabeach Avenue, Mona Vale
T: (02) 9979 6517
E: sales@baldwinliving.com.au
W: baldwinliving.com.au

THE WIDEST RANGE OF PADDLECRAFT ON THE NORTHERN BEACHES!

Whether you're just splashing about, chasing fish or exploring the bays and creeks we have a selection of kayaks, canoes and sup's to suit. We also carry a range of accessories including paddles, lifejackets, dry bags and roof racks. Spare parts and repair services are also available.

**2/6 Wilmette Place, Mona Vale
02 9999 5553**



SYDNEY KAYAK CENTRE

sydneykayakcentre.com.au

Marina, Moorings & Hardstand Facilities

The Royal Prince Alfred Yacht Club, welcomes visitors to experience our first class facilities, exceptional location and excellent service.

As winner of the Marina Industries Association's 2017/2018 Club of the Year, you won't find a better location on Pittwater to store your boat.

The RPAYC is proud to have been the first Club in the world awarded the prestigious '5 Gold Anchor', an accreditation under the Global Gold Anchor Scheme. The scheme is designed to assist marina users with their marina selection and provides marina operators with customer and operational framework in order to continually improve service and facilities for consumers. Complementing the "5 Gold Anchor" accreditation the RPAYC also holds a Level 3 Clean and Fish Friendly accreditation.

The "Club Marina of the Year" award and "5 Gold Anchor" accreditation are a reflection of the consistent high-quality service that the dedicated Management and team put into the RPAYC facilities.

OUR FACILITIES

The RPAYC is an ideal base to race and cruise from or to explore the pristine waterways of Pittwater.

The Club's award winning Waterfront facilities are maintained and managed by a dedicated team of experienced professionals who have a passion for the industry and who are on hand to provide assistance with your vessel, including:

- ▶ Berth assistance
- ▶ 7 day (on demand) tender service
- ▶ Services wharf – water, power, pump out and LPG gas
- ▶ Free Club Race Entry (member facility holders)
- ▶ 24hr CCTV surveillance and after hours security
- ▶ Modern amenities

We will ensure that your vessel with confidence and that your sailing experience is made easy!

RPAYC Marine Services

The Royal Prince Alfred Yacht Club has an extensive range of marine, maintenance and support services available. Our onsite tenants are able to work seamlessly with the Alfred's Boat Yard to provide a one stop shop for all your vessel maintenance and servicing needs.

Chandlery

Busuns Locker

ph: (02) 9997 2382
email: bosunslockernewport@hotmail.com
web: www.bosunslockernewport.com.au



Rigging Services

Riggtech

ph: 0416 203 081
email: pbate@riggtech.com.au
web: www.riggtech.com.au



Shipwright Services

Stewart Shipwright + Services

ph: 0418 688 202
email: info@stewartshipwright.com.au
web: www.stewartshipwright.com.au



North Shore Marine Group

ph: 0417 200 804
email: info@northshoremachine.com.au
web: www.northshoremachine.com.au



Marine Trimming



Ocean Covers
ph: 0466 895 292
email: beryn@oceancovers.com.au
web: www.oceancovers.com.au

Yacht Brokers



Ensign Ship Brokers
ph: (02) 9999 6360
web: www.ensignbrokers.com.au



Sydney Marine Brokerage
ph: 0411 424 514
email: andrew@sydneymarinebrokerage.com
web: www.sydneymarinebrokerage.com



Multihull Solutions Yacht Broker
ph: 0438 049 299
email: marcus@multihullsolutions.com.au
web: www.multihullsolutions.com.au

Marine Engineers and Mechanics



Douglas Marine Pty Ltd
ph: (02) 9997 2616
email: info@douglasmarine.com.au
web: www.douglasmarine.com.au



Lacey Marine Engineering
ph: (02) 9997 6106
email: sales@laceymarine.com.au
web: www.laceymarine.com.au



Andersen Marine Electrics
ph: 0414 646 165
email: andersenmarine@internode.on.net
web: www.andersenmarine.com.au

Marine Electrical

VESSEL STORAGE OPTIONS

- ▶ Berths The floating marina has 342 berths and can accommodate vessels to 30m (98') and depths up to 15m (50'). Berth fees include shore power, free shore power lead testing and water.
- ▶ Moorings 18 moorings located around the Club accommodating vessels up to 22m (65'). Club Moorings include a 7 day on demand tender service and mooring maintenance.
- ▶ Hardstands Two large hardstands accommodating up to 83 vessels. The hardstands provide members with an easy and safe method of storing, launching and retrieving vessels.
- ▶ Centreboard Storage racks and rigged storage accommodating up to 100 centreboard dinghies.
- ▶ Recreational Moorings 14 members-only recreational moorings conveniently located at The Basin, America's Bay and Refuge Bay.
- ▶ Dinghy Racks 30 racks available located in easy access areas.
- ▶ Lockers Large storage lockers are available for the storage of vessel equipment and sails.

For more information, contact the Waterfront Department telephone: (02) 9998 3741 or email: waterfront@rpayc.com.au



**FREE
MEASURE
& QUOTE
SERVICE**

AMPLIMESH



Avalon Screens is a family business which prides itself on our reputation for friendliness, professionalism and reliability. Our pricing is always competitive with quality production and installation. We cover all your flyscreen, security door, shutter, curtain & blind needs.

Avalon Screens

Shop 4/24, Avalon Parade, Avalon

02 9918 4897

m. 0416 189 079 e. info@avalonscreens.com
avalonscreens.com





Routine Maintenance, Inspection Checklist

To maintain any types of equipment in order to comply with any regulations, you will have many inspection checklists to fill, process, file and distribute.

Date	Task	Frequency	Status
11/03/2019	SIDE LIFT 2000 SERIES MONTHLY	MONTHLY	PASS
11/03/2019	SIDE LIFT 2000 SERIES MONTHLY	MONTHLY	PASS
11/03/2019	SIDE LIFT 2000 SERIES MONTHLY	MONTHLY	PASS
11/03/2019	SIDE LIFT 2000 SERIES MONTHLY	MONTHLY	PASS
11/03/2019	SIDE LIFT 2000 SERIES MONTHLY	MONTHLY	PASS
11/03/2019	SIDE LIFT 2000 SERIES MONTHLY	MONTHLY	PASS
11/03/2019	REAR LIFT WEEKLY FORTNIGHTLY MON...	(5) FORTNIGHTLY	PASS
11/03/2019	PENDULUM PACKER LUBRICATION	NA	PASS

Check and inspect operation of greasing system (if fitted)

Fail NA Pass

Comments

Missing greasing nipple from the grab head.

Priority

1 2 3

With our solutions:

- we convert all your checklists to dynamic electronic forms
- you can complete a Take 5 or risk Assessment before the services
- you can attach pictures, signatures and share documents within seconds
- you receive Alerts, Exception Reports and
- you create an asset history.

They chose us...



William Crendal
Destiny Wireless Australia
 Suite 7 Level 4, 18 Smith Street – Chatswood NSW 2067 – Australia

+61(0) 416 140 041 +61 (2) 9417 5333

www.destinywireless.com.au



Scan this QR Code to visit our website

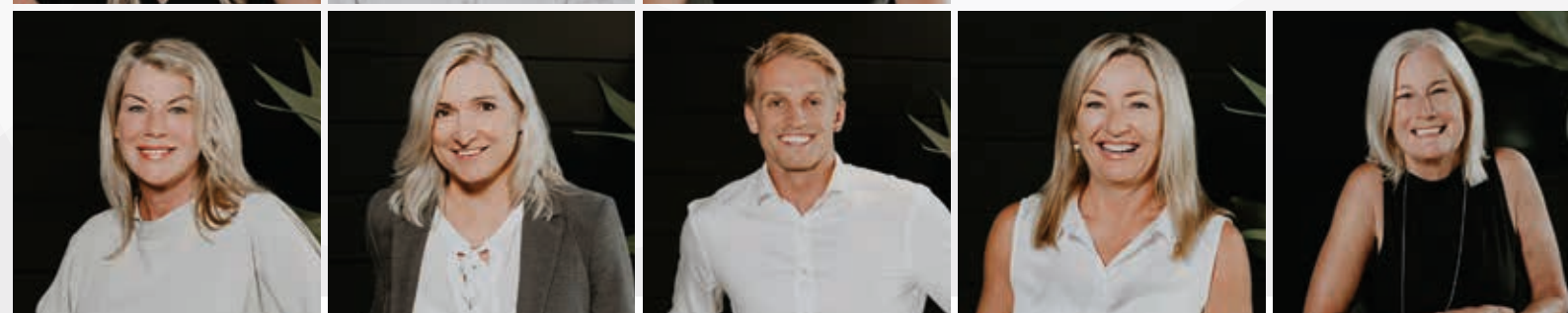
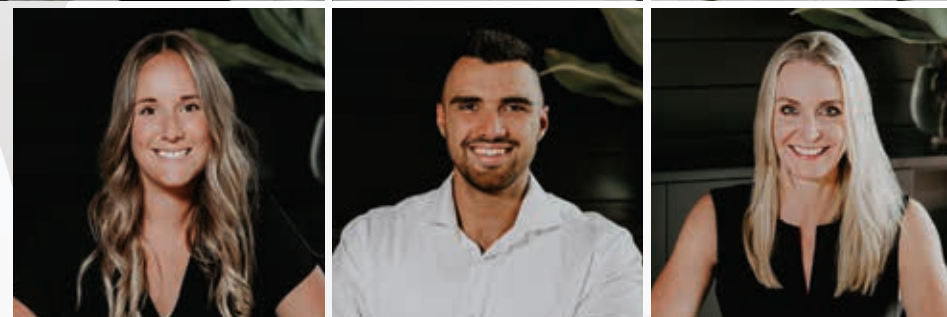




**As part of Australia's Number 1 brand,
LJ Hooker Newport stands for the local community.**

Truly local since 1954

Our clients are at the heart of everything we do.



LJ Hooker Newport
303 Barrenjoey Road, Newport
p 02 9979 1111
e newport@ljh.com.au
w newport.ljhooker.com.au



The Alfred's Boatyard

MODERN PROFESSIONAL CUSTOMER ORIENTATED



'I have used the services of many boatyards over the last 45 years and none come close to the exceptional service and support that I am now receiving annually from the RPAYC. It's simply the best.'



EXPERIENCE
★★★★★
SERVICE & QUALITY
at
The Alfred's Boatyard



Proudly assisted by the following onsite contractors:

Lacey Marine Engineering
Douglas Marine
Stewart Shipwright Service
Northshore Marine

Andersen Marine
Riggtech
Ocean Covers
Bosuns Locker

Sydney Marine Brokerage
Ensign Ship Brokers
Sydney Marine Group

Boatyard Services

The Royal Prince Alfred Boatyard is Pittwater's most modern and comprehensive boatyard.

We maintain our industry leading reputation by taking pride in the quality of our workmanship and specialise in really being a 'one stop shop' for our clients. The boatyard has a range of onsite specialists who will work together with the boatyard team to ensure that your vessel service is completed in an efficient and timely manner.

- ▶ 50 tonne travel lift
- ▶ A hardstand for up to 10 boats
- ▶ Custom built cradles and cradle carrier
- ▶ Mast deck with 1000Kg crane
- ▶ Onsite engineers, shipwrights, riggers and more

Antifoul Package Inclusions:

Lift, waterblast, full wet rub of the hull, antifoul sprayed (2 full coats with a third around the leading and trailing edges and waterline), 2 days on the hardstand, environmental levy, launch, and acid wash of the topsides. Antifoul options include the use of either International



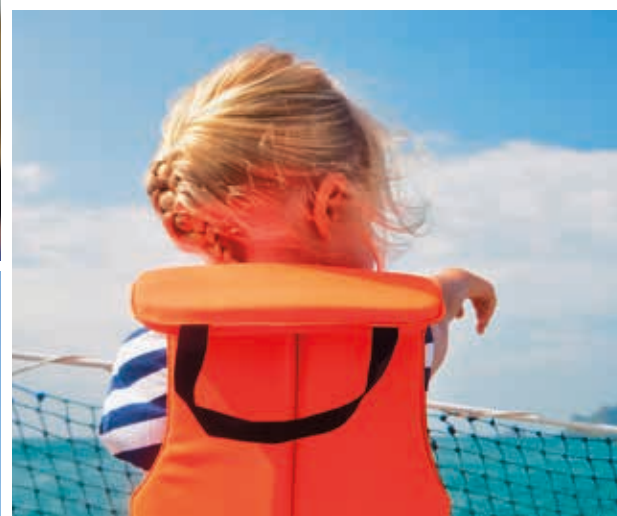
Ultra 2, Micron Extra 2 or Altex #5 and we are happy to quote competitively for any other antifoul on request.

Due for an Antifoul? What separates us from our competitors?

- ▶ We professionally spray (not roll) for a superior finish and longer lasting result
- ▶ A waterblast and hard wet rub is included with all antifoul packages
- ▶ Complimentary acid wash on the topsides
- ▶ Complimentary deck wash after completion
- ▶ Punctuality and we work with our onsite tenants to complete the schedule of service
- ▶ Communication, you will be kept well informed of your boat's schedule
- ▶ Antifoul - the price we quote is the price you pay

Request a quote today through our website or by calling 9998 3751.

boatyard@rpayc.com.au | 9998 3751 | rpayc.com.au



Join Today, Become a Member

The best way to enjoy all that The Royal Prince Alfred Yacht Club has to offer is to become a member.

With excellent facilities and an active sailing calendar, the Club has much to recommend it. It is the people who form the Club, however, that sets it apart from its peers. The welcome is warm and genuine. If you like sailing with like-minded people in organised Club events, you're just the sort of new member we're looking to encourage!

The Club has a range of memberships to cater for boat owners and skippers through to those keen to crew on board other members' yachts. You certainly don't need your own boat, or to even know someone with a boat, to become a member of the Club and sail regularly.

There are excellent rates available to Youth Members and a very attractive Family Membership which includes free membership to children and young adults aged up to 21.

View the Prospective Membership booklet on the Club website www.rpayc.com.au - it's full of useful information!

OUR MEMBERSHIP OPTIONS:

Full Ordinary

For all boat owners

Full Family

Boat owner, spouse (if applicable) and children aged 6-21

General

For non-boat owners

General Family

Non-boat owner, spouse (if applicable) and children aged 6-21

General Intermediate (aged 22-29)

For boat and non-boat owners

Spouse

For spouse/partner of Full and or General Members

Youth

Children aged 6-21

For more details about joining The RPAYC, please contact us by phone: (02) 9998 3700 or email: membership@rpayc.com.au

Member Benefits

Membership of The Royal Prince Alfred Yacht Club brings with it a wealth of benefits

MEMBER DISCOUNTS ON:

- ▶ Food & beverage in Halyards Bar & Bistro, Friday Happy Hour in the Edinburgh Bar and at Alfred's Table ala carte dining on Friday evenings, Family Friday Specials.
- ▶ Club functions and club social events.
- ▶ Function/Conference bookings with free room hire.
- ▶ Slipping and antifoul packages.
- ▶ Race entry fees waived for Full Members.
- ▶ Sail training programmes for adults and children run by the Club.
- ▶ SailFit Fitness Centre membership.
- ▶ Fuel purchases at RMYC Broken Bay.
- ▶ Accommodation at The Metro Mirage Hotel Newport

YEAR ROUND SAILING PROGRAMMES:

- ▶ Keelboat racing – inshore and offshore on Wednesdays, Saturdays and Sundays in Winter with twilight racing on Tuesdays, Thursdays.
- ▶ Off the beach centreboard racing on Sundays.
- ▶ Club, State and National regattas for keelboat and centreboard sailing.
- ▶ Extensive cruising calendar – both on and off the water with local and longer events.
- ▶ Youth development Sail Training programme.
- ▶ Integrated sailing activities.
- ▶ Training programs for adults, teenagers and children.
- ▶ Coaching services
- ▶ Crew register.
- ▶ Training for race management volunteers.
- ▶ Free courses for race management volunteers.

Are you satisfied with your superannuation investments?

Wish you had more certainty on your yearly retirement income?

Falling interest rates reducing your income?

Introducing Austin's Financial Solutions

Our team of integrated Accountants and Financial Planners strive to provide advice that caters for all our clients financial needs. Our focus is on delivering the optimal overall strategy by providing or facilitating the right advice when it's needed.

We specialise in:

- ▶ Self Managed Super Fund structuring and advice
- ▶ Personalised investment strategies and portfolio management based on your ongoing income and capital requirements
- ▶ Wealth creation and retirement planning
- ▶ Personal insurance
- ▶ Home, investment and business loans
- ▶ Cashflow planning

CONTACT TRENT AUSTIN OR PAUL SHOLL FOR A NO OBLIGATION CHAT ABOUT YOUR SITUATION.

02 9997 4701 | CONTACT@AUSTINSFS.COM.AU | AUSTINSFS.COM.AU

This advice may not be suitable to you because it contains general advice that has not been tailored to your personal circumstances. Please seek personal financial and tax/legal advice prior to acting on this information. Trent Austin, Paul Sholl and Austin's Financial Solutions Pty Ltd (ABN: 73 112 479 544) Authorised Representatives of Oreana Financial Services Limited ABN 91 607 515 122, Australian Financial Services Licensee No. 482234 Registered Office Level 7, 484 St Kilda Road Melbourne, Victoria 3004 Australia



Ultimate care for you and your family

We will help you arrange a personalised funeral for your loved one with the utmost care and compassion. You can also plan ahead with a prepaid funeral, and have things just the way you like.

We have been serving Northern Beaches families for over 15 years, and have a beautiful new funeral home that allows us to better cater to your needs.

Visit us at 18 Ocean Street, Narrabeen or call 8999 5874 to speak to one of our friendly staff.

WHITE LADY FUNERALS

a woman's understanding

whiteladyfunerals.com.au



NEW 458

THE BRITISH
YACHTING
AWARDS
2018



CLUB FACILITIES:

- ▶ Car accessible parking during club visits.
- ▶ Marina, hardstand and club moorings.
- ▶ Fully serviced boatyard with cranes and travel lift and service facilities including a chandlery, rigger, shipwright, electrician, engineer, brokerage and sail makers.
- ▶ Equipment storage areas.
- ▶ Tender service.
- ▶ Pump out facility.
- ▶ Recreational moorings in Pittwater and The Lower Hawkesbury River waterways.
- ▶ Disabled access for boat launching.
- ▶ Gym access and programs
- ▶ Showers, laundry and disabled amenities.
- ▶ Library and Billiards Room.
- ▶ Children's playground.
- ▶ Environmental initiatives, such as a commercial worm farm and herb garden.
- ▶ Use of the RMYC Broken Bay shuttle bus service.

OTHER:

- ▶ Complimentary Australian Sailing membership.
- ▶ Member accounts invoiced monthly.
- ▶ Weekly E-Newsletter and Annual Yachtsman magazine.
- ▶ Birthday voucher for use at the Club's Alfred's Table restaurant and or Bistro.
- ▶ Free Wi-Fi.
- ▶ Reciprocal arrangements with selected yacht clubs worldwide.
- ▶ Can sign in guests who live within 5km of the Club.



315 348 388 418 new 458 new 508 548 588 675

www.hanseyachts.com

Hanse
BREAKING RULES . SETTING TRENDS

WINDCRAFT
WE KNOW YOUR YACHT

Sydney 02 9979 1709 | Melbourne 03 9553 8766 | Auckland 09 413 9465
hanse@windcraftyachts.com | www.teamwindcraft.com

Specsavers raises the bar in Warriewood



The friendly team at Specsavers Warriewood

The team at Specsavers Warriewood is dedicated to your health. So much so that they can use a state-of-the-art machine to capture a photo of the back of the eye and map any changes over time. Plus, they can also check for signs of hearing loss all in the same appointment.

Specsavers Warriewood Optometry co-owner's optometrist Jenny Chiang and dispenser Josh Marchant with Specsavers Warriewood Audiology owner and audiologist Jeeyun Willis and the team have a passion for customer service, community connections and providing best value and cutting-edge eye and ear care to locals.

Since opening the store in Warriewood Plaza in 2016, the store has been very popular amongst locals, with over 18,000 eye tests administered and over 31,000 pairs of glasses sold.

Jenny says that having a local approach makes all the difference.

"Most members of the team live in the local area and we all have a strong connection with the place.

Jenny boasts over fifteen years of optometry experience and has a passion for building community connections and creating lasting relationships with customers as well as the cutting-edge technology that Specsavers provides.

"This month we are introducing Optical Coherence Tomography to our store. OCT uses light waves to create high resolution pictures of the structural layers of the back of the eye which indicate the patient's eye health. It's a powerful tool that helps our optometrists detect serious eye diseases including glaucoma, macular degeneration and retinal changes that may be associated with diabetes. The images taken are also stored, helping to track any changes in a patient's eye health over time. We are proud to offer all of our customers free OCT because that sort of technology is something that our competitors charge extra for," says Jenny.

Josh adds: "We also have put all of our staff through extensive training to become trusted optical dispensers and frame stylists. We have over 1,200 frames on display to choose from so having a frame stylist can make finding the best glasses fun and easy."

Jeeyun says all customers will also have their hearing screened in bulk-billed eye tests.

"All customers at Specsavers Warriewood will now have a free five-minute hearing screen included as part of their overall

health check in store. By offering this, we're providing truly accessible health care for our customers' ears as well as their eyes. The earlier we detect and treat hearing loss, the less of an impact the problem will have on a person's hearing long term," says Jeeyun.

If you feel like your hearing isn't as good as it should be, Specsavers Audiology Warriewood are now taking bookings for free* 15-minute hearing checks. If further testing is required, comprehensive hearing assessments with Jeeyun are being offered for \$49. If you require hearing assistance as a result, the stores have a range of hearing aids designed and built by leading manufacturers, which feature cutting-edge innovations in hearing assistance. A pair of hearing aids starts from \$1,495.

Specsavers Audiology Warriewood is accredited as a qualified hearing service provider by the Australian Government Hearing Services Program which provides eligible people with access to hearing services such as hearing assessments, subsidised hearing aids and aftercare services. If you think you might be eligible, you can apply for the Australian Government Hearing Services Program online or via post.

Book an appointment today online at www.specsavers.com.au/warriewood, call 02 9913 1844 or visit the team at Warriewood Square, Jacksons Rd, Warriewood.

Your eyes are priceless and they're always changing

An Eye Health Check with an OCT scan helps detect early signs of eye conditions like:

- Glaucoma
- Diabetic eye disease
- Macular degeneration

This allows them to be treated earlier and prevent potential vision loss. The best part: it's included at no extra cost.

Warriewood Square (Near Aldi) 9913 1844



Book your bulk billed Eye Health Check online today





Community Support & Industry Awards

INTEGRATED DISABLED SAILING (IDS) PROGRAMME

Sailing is an inherent part of our culture that provides exhilaration and freedom for all. It is a sport that enables sailors with disabilities to not only excel in, but to compete on equal terms against their able-bodied counterparts.

We have always believed here at The Royal Prince Alfred Yacht Club that sailing should be accessible to everyone. In 2013 The Club furthered its commitment to disabled sailing by formalising a programme called Integrated disAbled Sailing (IdS).

The intent of IdS was to seek partnership with other organisations that reach out to those who could benefit from the freedom and associated health benefits that sailing offers as well as extending financial assistance to associated causes.

The programme provides financial access to sailing and volunteer support, to integrate sailors of all backgrounds into the Club's life and additionally provides support for Sailability Crystal Bay, which is based out of the Club's Crystal Bay hardstand.

In addition to Sailability, the Club has expanded its programme by partnering with

Soldier On, a registered charity dedicated to supporting service men and women in adjusting back to civilian life. This programme takes great pride in providing sailing services to the men and women who have served our country.

Through the Club's friendship with Soldier On, the Club also assists RSL Active, St John of God Hospital and played a key part in the organisation, running and training of teams for the 2018 Invictus Games in Sydney - which ultimately saw Australia WIN GOLD!

The programme is proudly and generously supported through a number of fundraising events that enable Members and local businesses to contribute to funding the programme, as well as providing the opportunity for Members to give of their own time by taking participants sailing on the boats that they own. Additionally, Club Marine Insurance provide in kind support by insuring IdS vessels.

The IdS Programme has been widely recognised by the community and has been the recipient of two prestigious awards since its inception. The Club is fortunate to have world class facilities. These facilities have evolved over 150 years and benefits those who are

members today. The Club and its Members wish to continue sharing these facilities with the community and build participation in the sport of sailing.

Industry Awards

The IdS Programme was awarded the 'Best Community Engagement Initiative', by the Marina Industries Association (MIA) at the Marine15 International Conference on the Gold Coast, 2015.

► The IdS Programme was awarded the 'Disability, Welfare & Social Inclusion' Award at the 2016 Clubs NSW Club & Community Awards, presented by NSW Premier Mike Baird at the Royal Hall of Industries, Sydney.

► In 2017 the Club was awarded the Marine Industry Association (MiA) Club of the Year award. Following on from this national award, the Club was awarded the Yachting New South Wales Club of the Year. The success of the YNSW Award also meant that the RPAYC represented NSW at the Australian Sailing National awards.

► The RPAYC is proud to have been the first Club in the world awarded the prestigious '5 Gold Anchor', an accreditation under the Global Gold Anchor Scheme. The scheme is designed to assist marina users with their marina selection and provides marina operators with customer and operational framework in order to continually improve service and facilities for consumers.

Complementing the "5 Gold Anchor" accreditation the RPAYC also holds a Level 3 Clean and Fish Friendly accreditation.

► In 2017 the Club was awarded the NSW & ACT Club of the Year Award. The success of the Award also meant that the RPAYC was a finalist representing NSW& ACT at the Australian Sailing National awards.

► In 2018/2019 the Club was a finalist in the NSW & Act Club of the Year Award.

The Club is continually changing its practices to be further environmentally friendly, on and off the water. Among the many examples of environmental best practice are: reusable water bottles, zero straws, a worm farm to help recycle green waste, recycle bins throughout the club and a new SeaBin to scoop up water waste floating in Pittwater.



The RPAYC would like to thank all Elliott 7 Boat Sponsors for their support of Sailing at the Club



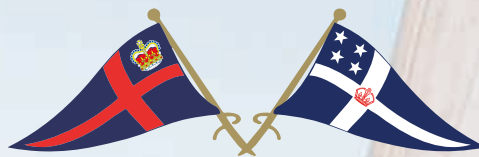
For sponsorship enquires:

Email: marketing@rpayc.com.au

The Royal Prince Alfred Yacht Club
16 Mitala St, Newport NSW 2016

Phone: 9998 3700

Web: rpayc.com.au



SYDNEY TO AUCKLAND OCEAN RACE



30 January 2021

Category 1 Ocean Race from Sydney Harbour to Auckland Harbour
Monohulls • Multihulls • Shorthanded • Cruising



"The Race to the America's Cup"

Royal Prince Alfred Yacht Club
E: sailing@rpayc.com.au
W: SydneytoAuckland.com