



THE ROYAL PRINCE ALFRED YACHT CLUB

# Sailing Handbook



\$22.00 inc GST

2019-2020  
[www.rpayc.com.au](http://www.rpayc.com.au)



# The Royal Prince Alfred Yacht Club

Broken Bay NSW Phone: 02 9998 3700

## EMERGENCY GUIDE FOR BROKEN BAY

AMBULANCE | POLICE | FIRE: 000 or 112

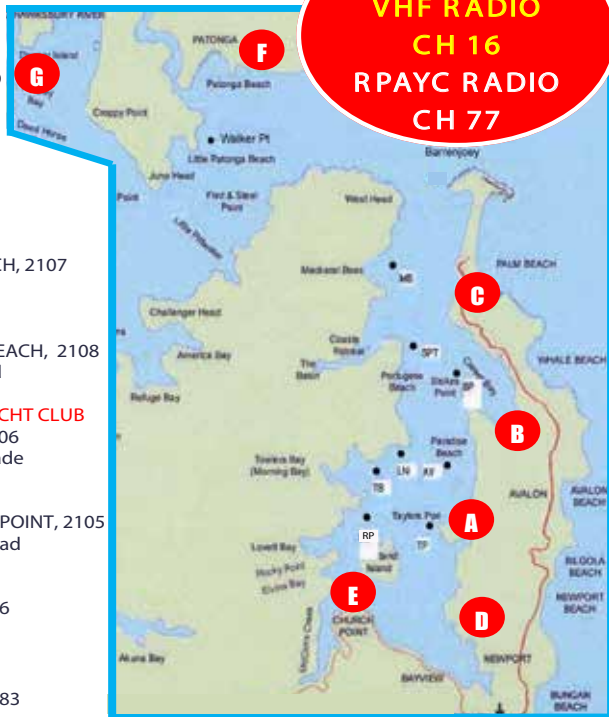
WATER POLICE BB:	0412 162 093	MONA VALE POLICE:	9998 0699
WATER POLICE BB:	9910 7899	MV ALFREDS I:	0428 276 409
RMS (MARITIME):	13 12 36	MV ALFREDS II:	0458 787 500
MARINE RESCUE BB:	9999 3554	RPAYC RECEPTION:	9998 3700

VHF MARINE RADIO → →

**EMERGENCY  
VHF RADIO  
CH 16  
RPAYC RADIO  
CH 77**

## AMBULANCE PICK UP POINTS

- A. **TAYLORS POINT WHARF**  
Lot 7132 Taylors Pt Road  
CLAREVILLE, 2107  
Cross Street - Hudson Parade
- B. **CAREEL BAY WHARF**  
4 George Street, AVALON BEACH, 2107  
Cross Street - Therry Street
- C. **PALM BEACH FERRY WHARF**  
1151 Barrenjoey Road, PALM BEACH, 2108  
Cross Street - Palm Beach Road
- D. **THE ROYAL PRINCE ALFRED YACHT CLUB**  
16 Mitala Street, NEWPORT, 2106  
Cross Street - Prince Alfred Parade
- E. **CHURCH POINT WHARF**  
1860 Pittwater Road, CHURCH POINT, 2105  
Cross Street - McCarrs Creek Road
- F. **PATONGA BEACH WHARF**  
6/8 Patonga Dr, PATONGA, 2256  
Cross Street - Bay Street
- G. **BROOKLYN WHARF**  
7 Dangar Road, BROOKLYN, 2083  
Cross Street - Karoola Street



Be Aware that the tide may impact depths at the above listed Pick Up Points. Commercial traffic at Palm Beach Wharf may also impact access.

Taylors Point Wharf may not always be a suitable evacuation location due to depth and/or weather limitations.

From a medical resource perspective, it is desirable in a multiple casualty situation, that medical treatment be provided at one location.

When using the RPAYC as a Pick Up Point, direct parties and emergency services to access the Services Wharf. Remember to contact the RPAYC to advise of the incident.

The following items of medical equipment are at the RPAYC Clubhouse:

Medical Kits | AEDs | Oxygen Kits | Spinal Board | Applied First Aiders | Wheelchair



## EMERGENCY RESPONSE & NOTIFICATION OF INCIDENTS

### NOTIFICATION OF INCIDENTS

The RPAYC is not able to provide primary emergency response. The NSW Water Police (or AMSA, depending on the incident location) shall coordinate the Emergency Response for boats requiring external medical assistance or requiring assistance when in grave or imminent danger to the safety of the vessel or crew. For any incident requiring Emergency Service assistance the persons at the sight of the incident should contact '000'.

Advising the Race Official Team and the RPAYC Club House should then follow.

At all times the RPAYC should be contacted to advise an incident has occurred and an incident report lodged by those parties involved.

The RPAYC may be able to provide assistance in non-emergency situations and/or as directed by the Emergency Services.

For any incident requiring assistance parties involved should updated Emergency Services, the Race Officials and Club on the situation.

### EMERGENCY RESPONSE

Where a vessel and/or its crew requires **Emergency Response** the vessels crew should use the standard marine radio emergency call procedures (**MAY DAY** or **PAN PAN**).

- **MAY DAY** - Only used if a vessel or person is in grave and imminent danger and requires immediate assistance.
- **PAN PAN** - Used when a Mayday distress signal is not fully justified - vessel requires assistance but is not in grave or imminent danger or if an urgent safety message concerning safety of the vessel or person.
- If the incident does not merit a May Day or Pan Pan call, but emergency assistance is required, Emergency Services should be called by dialing "000". The NSW Water Police Marine Area Command (MAC) are the primary Agency responsible for coordinating Emergency Responses. Incidents requiring Ambulance services refer to Pick up Point for your closest suitable location.

**First Response - contact Emergency Services on:**

- **VHF Ch. 16 and/or "000" or**
- **Water Police, Sydney 02-9692 5411 or Broken Bay 02-9979 4044 / Duty Officer 0412 162 093**
- Marine Rescue VHF 16 or 02 9999 3554



In the case of an incident not requiring Emergency Services contact should be made with:

- Alfred's 1 on VHF Ch 77 or on 0428 276 409; or
- Alfred's 2 on VHF Ch 72 or on 0458 787 500; or
- RPAYC Reception on 9998-3700

## **NOTIFICATION OF VESSEL ACCIDENTS AND PERSONAL INJURY**

---

If a boating accident occurs in any port or navigable water in NSW, the master of the vessel must:

- Stop the vessel immediately
- Give any assistance which may be necessary
- Produce any boat or PWC driving licence required to be held to authorities and parties
- Give details to any person having reasonable grounds for requesting them e.g. other persons involved in the accident
- Details must include the master's name and address as well as any distinguishing number which is required to be displayed on the vessel e.g. registration number or permit number.

**If requested by a Roads and Maritime Officer or any NSW Police Officer, provide the following details:**

- Full identification
- Time, place and nature of accident
- Name and registration number of every vessel involved in the incident
- Name and address of every person who was concerned with or witnessed the accident
- Extent of any injury or damage resulting from the accident
- Produce a boat driving licence or Certificate of Competency.

There is a NSW legislative requirement for skippers (and/or Persons-in-Charge of boats) to provide a written report to Roads and Maritime within 24 hours setting out the particulars of the incident if one of the following applies:

- The incident has resulted in the death, or injury to, a person
- The incident has result in damage in excess of \$5000 to a vessel of any other property
- Damage or risk to the environment has occurred.

The relevant NSW RMS Sailing Incident Report form may be found on the RPAYC website in the Incident Procedures section or on the NSW RMS Maritime website.

<http://www.rms.nsw.gov.au/maritime/>

- Copies should also be submitted to the RPAYC and or a Protest Form submitted if the incident occurred during an official event.



# Calling an Ambulance - flowchart



**Ambulance Service  
of New South Wales**

When you call Triple Zero (000), you will speak with a Telstra Operator who will ask you which service you require – police, fire or ambulance.

If you say **AMBULANCE**, you will be transferred to one of our control centres

To ensure you receive the most appropriate care quickly, the Ambulance control centre officer will ask you the following standard set of questions.

1. **What is the exact address of the emergency?**  
(The officer will ask for the suburb name, street address and nearest cross street or location you are calling from)
2. **What is the phone number you are calling from?**  
(This information is important in case the control centre needs to call back to obtain further information)
3. **Tell me exactly what happened?**
4. **How old is s/he?** (Approximate age if unsure)
5. **Is s/he awake?**
6. **Is s/he breathing?**

Answering these questions to the best of your ability ensures we have the most accurate information about the patient's condition and can assess the situation quickly

From your responses to the questions above, Ambulance will determine the most appropriate service for you.

Ambulance uses the internationally recognised Medical Priority Dispatch System (MPDS) to determine the level of response required based on the severity of the patient's condition. Not all callers will require an ambulance.

**Life-threatening medical emergency. Urgent assistance required**

Paramedics sent immediately under lights and sirens.

**DO NOT HANG UP**

The control centre officer will ask you additional questions to assist paramedics en route.

The control centre officer can also provide further assistance and/or medical instructions depending on the medical emergency.

**Medical assistance required but not life-threatening medical emergency**

Paramedics will be sent without lights and sirens when available. This may be as soon as 30 minutes or up to 90 minutes during busy periods.

**Not an emergency but may require further medical assessment.**

Your call is transferred to a registered nurse for assessment.

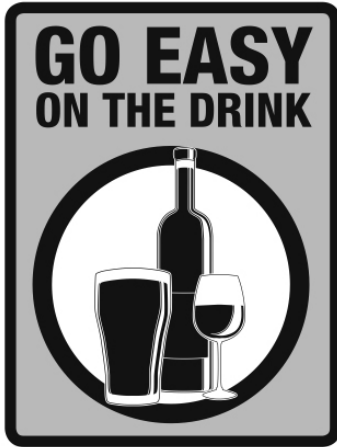
The nurse can provide advice over the phone and identify other methods of transport, or treatment by other health professionals.

The nurse can also return the call to the Triple Zero (000) control centre officer at any time if they believe an ambulance is required.

If your call falls into one of the above categories, you should call Triple Zero (000) again if the patient's condition changes in any way.







## GO EASY ON THE DRINK

When you're in a boat, the combination of wind, waves and the sun can all magnify the effects of alcohol and affect your judgement and skills.

Remember:

- The blood alcohol limit on water is 0.05 – the same as on the road.
- Random breath testing also applies on the water.
- Go over the limit and you could really get in over your head. So go easy on the drink.

For more information see our website or call the info line.

**YOU'RE THE SKIPPER  
YOU'RE RESPONSIBLE!**

MAR0124/06/12

Info line: 13 12 56  
[www.rms.nsw.gov.au](http://www.rms.nsw.gov.au)



Transport  
Maritime



The Royal  
Prince Alfred  
Yacht Club



CLUB  
MARINE

*Sail* PITTWATER  
**EXPO**

21 - 22 MARCH, 2020

[WWW.PITTWATERSAILEXPO.COM.AU](http://WWW.PITTWATERSAILEXPO.COM.AU)



# CONTENTS



EMERGENCY RESPONSE & NOTIFICATION OF INCIDENTS	1
<hr/>	
SECTION 1.0 – INTRODUCTION	6
- Commodores Message	8
- General Club Information	11
<hr/>	
SECTION 2.0 – PROGRAM OF EVENTS	21
<hr/>	
SECTION 3.0 – PERPETUAL TROPHIES & SPECIAL AWARDS	35
<hr/>	
SECTION 4.0 – NOTICE OF RACE AND SAILING INSTRUCTIONS (Including MARKS AND DESCRIPTIONS)	43
APPENDIX A - WEDNESDAY SERIES	57
APPENDIX B - THURSDAY TWILIGHT SERIES	61
APPENDIX C - WOMEN'S TWILIGHT SERIES	63
APPENDIX D - ESTUARY & SHORT OFFSHORE SERIES	65
APPENDIX E - PITTWATER INSHORE SERIES	67
APPENDIX F - ONE DESIGN & SPORTS BOAT SPRINT SERIES	69
APPENDIX G - RPAYC COMMODORES CUP SERIES	73
APPENDIX H - LION ISLAND SERIES	75
APPENDIX I - WINTER AND EARLY BIRD SERIES	77
APPENDIX J - TWO HANDED SERIES & WOMEN'S WINTER SERIES	79
<hr/>	
NAVIGATING LION ISLAND	81
<hr/>	
CHART OF PITTWATER	83
<hr/>	



Front page photograph - Windy Too (Credit: Peter Rattray)

## SECTION 1.1 - INTRODUCTION

### THE ROYAL PRINCE ALFRED YACHT CLUB

(ACN 000 095 063) ("Club")

#### Notice to Participants ("Notice")

Participants must take care especially when in the vicinity of, or when, rounding buoys during Club Events and at all times take reasonable care to avoid injuring other participants. Nevertheless, participants should be aware that collisions between boats can and do occur during sailing Events.

sailing Events are intended to be good fun and to promote wellbeing and comradeship. Participants should enjoy themselves, but not at the expense of other participants in Club Events, and should at all times observe the World Sailing (WS) Racing Rules of Sailing, the International Rules for Prevention of Collisions at Sea, the rules and regulations as stated in the Notice of Race and Sailing Instructions and display good sportsmanship in order to promote the sport of Yachting.

### CONDUCT OF MEMBERS

Extract from the RPAYC By-Laws.

- (i) Members will not engage in conduct:
  - which is prejudicial to the interest of the Club;
  - which causes offence to other members, their guests or visitors; or staff
  - which is unbecoming of a member.
- (ii) Members must act at all times in accord with the Club's Values Statement, set out in Annexe B.
- (iii) Any person creating a disturbance or interfering with the peaceful enjoyment of fellow members and their guests will be requested by Club Staff or Elected Club Officials to vacate the Club Property forthwith.
- (iv) Members should, at all times, be mindful of the beliefs and cultural diversity of other members and their guests together with the concept of equal opportunity for all.
- (v) Members shall not use any part of the Club's Property in any manner which breaches any law relating to Work Health and Safety or the Environment Protection Act or creates any occupational health and safety problem or an environmental problem. The members shall comply with any directive given by Club Staff concerning Work Health and Safety and Environmental Protection Act.
- (vi) Members will comply with the relevant statutory requirements with regard to workplace practices and environmental management and any workplace practice and environmental management control determined by the Club from time to time.



- (vii) Any damage caused by a member or vessel to Club Property or other person's property must be reported to the Club within 24 hours of the occurrence and will be recorded in the Club's Incident Register.
- (viii) Members are also encouraged to report any near miss incidents so the Club may proactively attend to risk management.

## **FOUNDED**

---

The Club was formed with ten Members on the 15th October 1867, and named The Prince Alfred Yacht Club. Permission to use the prefix "Royal" was granted by His Majesty, King George V in August, 1911.

## **BY WARRANT**

---

Under the Seal of Office of the Lord High Admiral of the United Kingdom of Great Britain and Ireland etc., Members of the Club are permitted to wear the Blue Ensign of Her Majesty's Fleet on board their vessel, on certain conditions laid down in the said warrant.

## **PATRON**

---

1867-1900 His Royal Highness Prince Alfred, The Duke of Edinburgh.

1901-1909 His Majesty King Edward VII

1910-1936 His Majesty King George V

1981-2002 Sir Roden Cutler, V.C., A.K., K.C.M.G., K.C.V.O., C.B.E.

2015- The Honourable Bronwyn Bishop

## **INCORPORATION**

---

The Royal Prince Alfred Yacht Club

The company is registered according to law.

The company is a public company limited by guarantee.

The day of commencement of registration is the 15th May 1951.

A.C.N. 000 095 063

A.B.N. 50 506 904 724



## COMMODORES MESSAGE

---

### The RPAYC – Excellence in Sailing

Welcome to The Royal Prince Alfred Yacht Club Sailing Handbook 2019-2020.

As Club Members at the Alfred's we enjoy world class facility, access to one of the best waterways on the planet and a dedicated and skilled group of member volunteers and professional staff to facilitate all our sailing activities under the mantra of "Excellence in Sailing".

Our sailing calendar remains extensive and caters for a full range of sailing interests as well as social activities in and around the Club for Members and their guests to enjoy. In addition to this Handbook, the Club's events calendar can be viewed on the Club's website with special events seen across our social media platforms.

Our strategic goals have and will continue to be very much centered on participation across all levels. I would like to encourage all our Members to make the most of our wonderful facilities, local, extended environs and sailing and training services at the Club to participate in whatever sailing, boating and social activities that spark your interest.

As part of a number of initiatives to encourage participation, full Club membership includes race entry fees for most club racing events (some regattas and offshore events are excluded so please refer to the website for details). There is also an extensive range of training available across all sailing activities and levels of competence to help improve skills and knowledge and to obtain the appropriate qualifications for the boating you are undertaking. We will continue to share and invite participation to our world class racing with members of our sister Australian Sailing affiliated Clubs so we may enjoy the competition gained from increased participation.

Of course, the Club's "Excellence in Sailing" mantra is shared by everyone. Whether going for a motor around the bay, cruising or racing inshore or offshore, launching our off the beach boats or just getting in and out of the marina, we all should be aiming to be the best sailors that we can. In particular, when we enter the Club and step onto our boats, we have an obligation to the safety and well-being of both ourselves and those with whom we share our magnificent waterways.

All members should have already undertaken a review of their boats requirements and had the appropriate equipment compliance audit done by the Clubs Special Regulations Equipment Auditors in readiness for the season ahead. However, I would like to remind all skippers/boat owners that it is ultimately your responsibility to prepare and to keep your boat well founded and maintained to the elected category as per the "Blue Book" and additional Club and RMS Maritime requirements. The decision to race should also be measured against your crew's ability and qualifications to handle the vessel in the prevailing wind and sea state.

Each skipper and each crew member should also take the time to update themselves with the 2017-2020 World Sailing Racing Rules of Sailing (RRS), Australian Sailing Prescriptions, Special Regulations and other Statutory Rules and Regulations but also ensure that we are all behaving in a responsible and courteous manner on our waterways. This season the Club will be holding additional Rules sessions. There will also be electronic links to cover these important aspects which will be beneficial in both passing on new knowledge of



any changes in rules/regulations as well as reaffirming existing knowledge and thereby providing a sound and consistent base across our Divisions to underpin safe and enjoyable sailing in our many different sailing formats.

Embedded in the RRS and our General Notice of Race and Sailing Instructions is also a requirement to nominate the Person(s) in Charge (PiC) for each boat and that PiC must complete the PiC Declaration in a boats entry form. If there is a change in PiC or helm for any race during the season then notification to the Sailing Office is required prior to the race commencing and a fresh or updated declaration completed by the nominated PiC online. The declaration is an important document to reaffirm responsibilities of PiC and risk compliance and management.

Boat owners are also reminded that the RRS requires all crew (after 3 races) to be a member of Australian Sailing (AS), this can be through membership of the RPAYC or other AS affiliated Clubs. RPAYC membership incorporates the membership of Australian Sailing which in turn provides basic coverage under the Australian Sailing Personal Injury Insurance.

General Club Membership is the equivalent of approximately \$10 per week and we ask all members to encourage their crew mates to join the Club, use it as much as possible and contribute to the cost of running the sport and the facilities that we enjoy.

The club publishes a variety of communications to keep you all informed of the many activities and members achievements; there is no excuse to miss anything.

The Club website [www.rpayc.com.au](http://www.rpayc.com.au) offers quick access to news items, updates and all points of interest on offer at the Club. The Club also puts out regular updates through weekly newsletters, posters and social media. I encourage all members to visit the Crew or Boat Finder page with links to Sailconnect and Mysail, the most popular sites to search for additional crew for racing, cruising or a delivery; both potential crew and boat owners can register their specific needs. The Club will continue to maintain a crew board in reception to help with any last-minute crew requirements.

The clubs various committees continue to work endlessly to attract, retain and find ways to introduce crew to boats. At the core of this has always been introducing crew by association in addition to the new technologies available. I encourage all members to invite their friends and family to the club to see the great facilities

Finally, at the Alfred's we rely heavily on volunteers to assist in all our sailing and other related club activities from Yacht Race, Cruising, Centreboard and other committee involvement, Special Regulation Auditors through to on water race management teams. Volunteers are the backbone of our Club and I thank all these members in advance for the time and effort they put in and ask you to do the same when the opportunity arises, or even better offer to help out in a similar manner and enjoy a satisfying and rewarding part of participation and involvement in our sport.

I look forward to seeing you all at the Club and on the water, participating and enjoying our great sport and comradery of fellow members and visitors.

**Michael Lockley**  
**Commodore**





# COME CREWING



**Contact us today:**

The Royal Prince Alfred Yacht Club

16 Mitala St, Newport NSW 2016

Phone: 9998 3700

Email: [sailing@rpayc.com.au](mailto:sailing@rpayc.com.au)

Web: [www.rpayc.com.au/sailing/crew-or-boat-finder](http://www.rpayc.com.au/sailing/crew-or-boat-finder)



## SECTION 1.2 - GENERAL CLUB INFORMATION

### INCORPORATION

---

#### THE ROYAL PRINCE ALFRED YACHT CLUB

---

Street Address: 16 Mitala Street, Newport NSW  
Postal Address: PO Box 99 Newport Beach NSW 2106  
RPAYC Tel: 02 9998 3700  
Sailing Office Tel: 02 9998 3771  
Email: [sailing@rpayc.com.au](mailto:sailing@rpayc.com.au)  
Web: [www.rpayc.com.au](http://www.rpayc.com.au)  
Club base Radio Frequency: VHF Channel 77

#### Committee Vessels

Alfred's 1 (Grand Banks 36)      0428 276 409  
Alfred's 2 (Steber 34)            0458 787 500

#### Emergency Contact Numbers (dial 000 for immediate assistance)

NSW Water Police Broken Bay	000 or 02 9979 4044 or 02 9910 7899, Duty Officer 0412 162 093
NSW Water Police Sydney	000 or 02 9692 5411
NSW Police Marine Area Command (MAC)	02 93207499
Roads and Maritime Services	13 22 13
Roads and Maritime Services Bayview – (Fri & Sat only)	13 22 13
Marine Rescue, Cottage Point	02 9456 3055 (Sat, Sun & PH only)
Marine Rescue, Broken Bay	02 9999 3554 (Sat, Sun & PH only)

#### GOVERNING BODIES

---

##### Australian Sailing

Level 1, 22 Atchison Street, St Leonards NSW 2065  
Locked Bag 806, Milsons Point, NSW 2061  
Tel: 8424 7400  
Web: [www.sailing.org.au](http://www.sailing.org.au)



## CLUB ADMINISTRATION

---

General Manager	Craig Evans: craig.evans@rpayc.com.au
Executive Assistant	Lisa Hughes: lisa.hughes@rpayc.com.au
Race Director	Nick Elliott: nick.elliott@rpayc.com.au
Administration Manager	Pip Lodder: pip.lodder@rpayc.com.au
Membership Services	Leah Solomon: leah.solomon@rpayc.com.au
Reception	reception@rpayc.com.au
Concierge	Ted Glass: reception@rpayc.com.au

## SAILING AND COMMUNICATIONS AND MARKETING

---

Sailing & Communications Manager	Brendan Rourke: brendan.rourke@rpayc.com.au
----------------------------------	---

### Sailing and Training

Sail Training & Centreboard Administrator	sailtraining@rpayc.com.au
Yachting & Training Co-ordinator	Andrew Phillips: andrew.phillips@rpayc.com.au
Club Coach	Tom Spithill: tom.spithill@rpayc.com.au
Youth Development	yd@rpayc.com.au
General Enquiries	sailing@rpayc.com.au

### Marketing and Communications

Communications Coordinator	Katie Pellew: katie.pellew@rpayc.com.au
Marketing Inquiries	marketing@rpayc.com.au

## HOUSE & FUNCTIONS

---

House Manager	Mandy Hansen: mandy.hansen@rpayc.com.au
House Supervisors	Sturt Royle & Sandy Chase: functions@rpayc.com.au

## MARINA, MOORINGS, HARDSTAND & BOATYARD

---

Marine Services & Operations Manager	Kylie Brown: kylie.brown@rpayc.com.au
Facilities Supervisor	Dan Deamer: dan.deamer@rpayc.com.au
Waterfront	Andrew Connell: andrew.connell@rpayc.com.au
Waterfront	Mitch Hargreaves: mitch.hargreaves@rpayc.com.au
Boatyard Operations Manager	Garry Moon: garry.moon@rpayc.com.au
Boatyard Services Manager	Monique Mobbs: monique.mobbs@rpayc.com.au
General Enquiries	waterfront@rpayc.com.au boatyard@rpayc.com.au

## SAILFIT GYMNASIUM

---

Gym Supervisor	Tana Anderson: tana.anderson@rpayc.com.au
----------------	---

*Sailfit*  
RPAYC FITNESS CENTRE





## FLAG OFFICERS

---

### COMMODORE & VICE COMMODORE

---

#### Commodore

Michael Lockley *"Pretty Woman"*

#### Vice Commodore

Ron Palmer *"Inevitable"*

### REAR COMMODORE'S

---

#### Rear Commodore Yacht Racing

Allen Stormon *"Gezzabelle"*

#### Rear Commodore Centreboard

David Taylor *"Rapid Fire"*

#### Rear Commodore Cruising

Leon Wilson *"Nirvana's Kitchen II"*

#### Rear Commodore Membership

Liz de Soyres *"Twiggy"*

#### Rear Commodore Activities

Julia Hornsby *"Pick Pocket"*

### BOARD OF DIRECTORS

---

#### Commodore

Michael Lockley *"Pretty Woman"*

#### Vice Commodore

Ron Palmer *"Inevitable"*

#### Directors

Simon Grosser *"Young at Heart"*

James Mayjor *"Whisper II"*

Lauren Crossman *"Aero"*

Murray Glase *"Gypsy Princess"*



## COMMITTEES

---

### SAILING COMMITTEE

---

#### Race Committee

Allen Stormon (Chairman & Fleet 2 Representative), Nick Elliott (Race Director/PRO/Organising Authority Liaison), Martin Cross (Fleet 3, OD & Sportsboat Representative), Ian Edwards (Offshore Fleets Representative), Elaine Fowler (Race Officer & Women's Representative), Mark Griffith (Fleet 1 Representative), Steve Hatch (Rules Representative) & Russell Murphy (Membership Representative).

#### Rules, Protests & Umpires

Ken Moxham (Chairman), Jim Gordon, Steve Hatch, Chris Heraghty, Richard Hudson, Stephen Merrington, Richard Slater, Liz de Soyres and David West.

### CRUISING COMMITTEE

---

Leon Wilson, Murray Glase (Board Liaison) Doug Coombs, Williams, Sonia Williams, John Groves, Megan Nixion, Rodger Kennedy.

### CENTREBOARD RACING COMMITTEE

---

David Taylor (Chairman), James Mayjor (Board Liaison), Ian Audsley, Chris Attwood, David Williams (NSWIODA rep), Malcolm Derry, Andrew Tuite, Maxine Troop, Steve Bryant.



# RPAYC Marine Services

The Royal Prince Alfred Yacht Club has an extensive range of marine, maintenance and support services available. Our onsite tenants are able to work seamlessly with the Alfred's Boat Yard to provide a one stop shop for all your vessel maintenance and servicing needs.

## Chandlery

### Busuns Locker

ph: (02) 9997 2382  
email: bosunslockernewport@hotmail.com  
web: www.bosunslockernewport.com.au



## Rigging Services

### Riggtech

ph: 0416 203 081  
email: pbate@riggtech.com.au  
web: www.riggtech.com.au



## Shipwright Services

### Stewart Shipwright + Services

ph: 0418 688 202  
email: info@stewartshipwright.com.au  
web: www.stewartshipwright.com.au



### North Shore Marine Group

ph: 0417 200 804  
email: info@northshoremarine.com.au  
web: www.northshoremarine.com.au



## Marine Trimming

### Ocean Covers

ph: 0466 895 292  
email: beryn@oceancovers.com.au  
web: www.oceancovers.com.au



**Contact us today:**  
The Royal Prince Alfred Yacht Club  
16 Mitala St, Newport NSW 2016  
Phone: 9998 3700  
Email: reception@rpayc.com.au  
Web: rpayc.com.au

## Yacht Brokers



### Ensign Ship Brokers

ph: (02) 9999 6360

email: kate.douglas@ensignbrokers.com.au  
web: www.ensignbrokers.com.au



### Sydney Marine Brokerage

ph: 0411 424 514

email: andrew@sydneymarinebrokerage.com  
web: www.sydneymarinebrokerage.com



### Multihull Solutions Yacht Broker

ph: 0438 049 299

email: marcus@multihullsolutions.com.au  
web: www.multihullsolutions.com.au

## Marine Engineers and Mechanics



### Douglas Marine Pty Ltd

ph: (02) 9997 2616

email: info@douglasmarine.com.au  
web: www.douglasmarine.com.au



### Lacey Marine Engineering

ph: (02) 9997 6106

email: sales@laceymarine.com.au  
web: www.laceymarine.com.au

## Marine Electrical



### Andersen Marine Electrics

ph: 0414 646 165

email: andersenmarine@internode.on.net  
web: www.andersenmarine.com.au



# FLAG AND YACHT ETIQUETTE

---

Flag and Yacht Etiquette are derived from custom and usage of the Royal Navy. Members of The Royal Prince Alfred Yacht Club will wish to maintain similar high standards of seamanship and good manners.

## ENSIGNS

---

All Australian ships are entitled to wear the Australian Red Ensign.

'Alfreds' yachts may wear the defaced blue ensign provided that:

- The owner has an Admiralty Warrant to fly the blue ensign
- The Warrant is aboard the yacht at the time
- The owner is on board or in effective control of the yacht (e.g. ashore in the vicinity)
- The 'Alfreds' burgee is worn

## COLOURS IN HARBOUR

---

The burgee and ensign should be hoisted at 0800 hours and lowered at sunset. The 'Alfreds' requires ships to lower all colours at this time.

## AT SEA

---

The ensign should be worn in daylight within sight of land or, when in company with other yachts or ships. The burgee is not required to be lowered at sunset.

## WHEN RACING

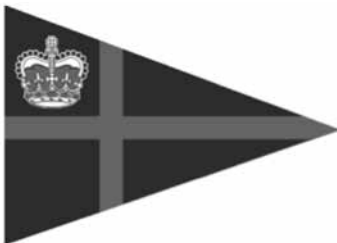
---

Burgees and ensigns must not be worn. Racing flags should be flown from the backstay in all 'Alfreds' races. Yachts, having retired, should wear the burgee and ensign.

## SALUTES

---

The red and blue ensigns should be dipped to warships of all nations and to The Royal Prince Alfred Yacht Club Flag Officers. The white ensign is never dipped except when returning a salute.



**Club Burgee**



**Racing Burgee**



# VOLUNTEERS

The Club's sailing program continues to operate with the enthusiasm and commitment of volunteers. The ability to continue to deliver a first class and diverse sailing program depends very much on the assistance and support of the members.

If you are in-between boats, or just looking for an excuse to get onto the water, we have the perfect opportunity for you. Members are always needed and always welcome to assist with the successful implementation of the Club's varied on water programs.

You don't have to be an active sailor to be a volunteer. No matter what your experience, there is a variety of interesting volunteer roles that can be undertaken and all are an integral part of a successful event.

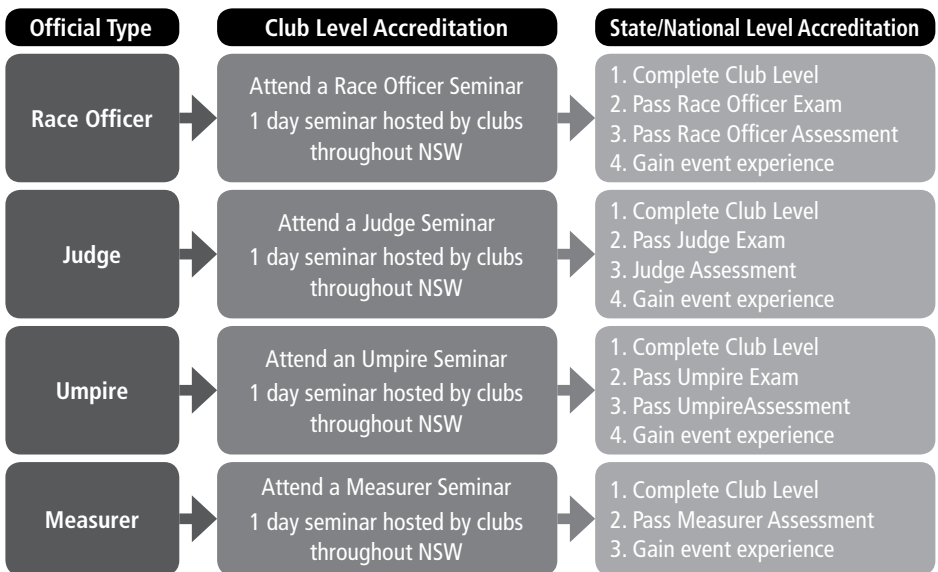
Volunteer activities include event administration, shore marshalling, equipment audits, protests, driving of vessels and assisting on support boats, laying marks, penciling results, operating flags, setting the race course and much more.

Volunteer race officials enjoy the camaraderie that comes from membership of a team with varied responsibilities and, as members, they seek to have as much fun as competitors.

The commitment is flexible, contributions are invaluable and offers to contribute are warmly welcomed.

We have experienced members to assist new volunteers to develop any necessary skills required and offer volunteer training throughout the season. If you would like to know more, please contact the Sailing Office on 02 9998 3700 or visit the club's website:

**[www.rpayc.com.au/volunteering](http://www.rpayc.com.au/volunteering)**



## HANDICAPPING AND RATINGS

---

### PHS - Performance Handicap System

Performance Handicap System (PHS) will be used across all Series and events at the Club.

The Handicap Sub-Committee is empowered to establish a base handicap to which, in turn, the automated handicap system makes adjustments + or – based on a boat's performance against other boats within her division.

When allocating boats to a particular division, the emphasis will be on the handicap & performance of a boat. The allocation of a boat into a division is conducted by the Handicap Sub Committee and the Race Committee. A boat may not select its own division in which it wishes to sail. Division Flags are available from the Sailing Office and shall be flown for the division to which a boat has been allocated.

Division	Division Flag Colour
1	Blue
2	Green
3	Pink
4	Yellow
Non Spinnaker	White

### IRC, ORC & SMS Rating Certificates

A boat with a current and valid IRC, ORC or SMS certificate has the ability to use its certificate to be scored in a separate IRC, ORC or SMS scoring category.

Rating certificates will be applied from the date submitted to the Sailing Office and will not be back dated for previous races.

Any modification to a boat, rig or sails that effects its performance, shall be re-rated by the appropriate authority and a new certificate submitted to the Sailing Office.

### Event Handicap (EHC)

EHC is a fixed handicap. A boat's EHC will be determined by the Race Committee or its nominee.

### Club Handicapping Definitions

HC – Handicap

AHC – the "Allocated HC" the HC allocated to a boat for a particular race.

BCH – the "Back Calculated HC" for each boat. This is the HC the boat needed for this race to end up with the same HC corrected as that of the reference boat. This can only be calculated after the race.





## Handicap Methods used in Club Series (details are examples only)

### Weighted average of the last X BCHs

In essence this averages the last say 4 race's BCHs.

So at race 4 the next race HC is  $(BCH1 + BCH2 + BCH3 + BCH4)/4$

At race 5 it is  $(BCH2 + BCH3 + BCH4 + BCH5)/4$

At each new race the oldest BCH is dropped and the last race BCH added into the averaging process.

A boat can win a race (or be in the top place getters) and have the next race HC go down. Likewise a boat towards the bottom of the fleet can actually have their HC go up after the race.

Various "weighting" is applied to the BCHs to endeavor to cull out BCHs which are not truly representative of that boat's performance. The best and/or worst BCH may not be used; The BCH value may also be "clamped" so it cannot be above or below as a percentage of the AHC for that race

### Exponential average with a "gain" of X

This form of Handicapping has been shown to provide a very similar outcome to weighted Average Handicapping over the duration of a Series. As an example, the use of a "gain" of 3.

The next race HC =  $1/3$  of the BCH plus  $2/3$  of the AHC.

The BCH may be clamped to say +/- 4% before the calculation is performed.

This system does not suffer from the issue of winners HCs having the potential to actually drop or losers HCs actually going up.

If a boat performs well their HC goes up and conversely a boat performs badly their HC goes down.






The Royal Prince Alfred Yacht Club

# Commodores CUP

Club Keelboat Championship

The Club's  
**BEST ALL-ROUNDER**

Achieve the best results  
from selected *Summer  
Series Events* to secure  
your name as the RPAYC  
Club Keelboat Champion

  
**ENTER NOW  
ONLINE**

\$50 entry fee

Supports Youth  
Development Program

See Appendix G of the Sailing Handbook - [www.rpayc.com.au/sailing/yacht-racing](http://www.rpayc.com.au/sailing/yacht-racing)



# SECTION 2.0 - PROGRAM OF EVENTS



SEPTEMBER 2019						
MONDAY	TUESDAY	WEDNESDAY	THURSDAY	FRIDAY	SATURDAY	SUNDAY
30						1 Fathers Day
	School Holiday Sailing Program (W1)					
2	3	4	5	6	7	8
		Club Marine Wednesday Spring Series (R1)		First Friday	<b>Opening Day - Pittwater Dash</b>	Centreboard Racing Round 1 Class Training
9	10	11	12	13	14	15
		Club Marine Wednesday Spring Series (R2)		Alfred's Table, a la carte Dining Speakers Corner	Estuary/SOPs Series (R1) Sprints Series (Round 1)	Centreboard Racing Round 2 Class Training
16	17	18	19	20	21	22
		Club Marine Wednesday Spring Series (R3)		Family Friday, Kid's Cooking		Centreboard Racing Round 3 Class Training
23	24	25	26	27	28	29
		Club Marine Wednesday Spring Series (R4)	OneSail Tactical Navigation Seminar	Term 3 concludes Alfred's Table, a la carte Dining	Club Marine BWPS (R2) Bird Island Sydney Rtn Pittwater Inshore Series (R1)	Centreboard Racing Round 4
					David Lukins Match Racing Memorial Regatta	

PROGRAM OF EVENTS

[www.rpayc.com.au/eventcalendar](http://www.rpayc.com.au/eventcalendar) \*\* Provisional Calendar subject to change\*\*



Any amendments or updates to this page will be posted on the Club's website

## OCTOBER 2019

MONDAY	TUESDAY	WEDNESDAY	THURSDAY	FRIDAY	SATURDAY	SUNDAY
30 Sept	1	2	3	4	5	6
		Club Marine Wednesday Spring Series (R5)		First Friday		Daylight Saving Begins
		School Holiday Sailing Program (W1)				
7	8	9	10	11	12	13
Labour Day		Club Marine Wednesday Spring Series (R6)		Alfred's Table, a la carte Dining Speakers Corner	Estuary/SOP's Series (R2) Sprints Series (Round 2)	
		School Holiday Sailing Program (W2)				
					Super 12 Regatta	
					Wasp NSW Championship	
14	15	16	17	18	19	20
Term 4 commences		Club Marine Wednesday Spring Series (R7)	Twilight Spring (NPS)	Family Friday	Pittwater Inshore Series (R2)	Centreboard Racing Round 5 Class Training Tackers, Kids Learn to Sail
21	22	23	24	25	26	27
		Club Marine Wednesday Spring Series (R8)	Twilight Spring Series (R1) Discover Sailing Session	Alfred's Table, a la carte Dining (Octoberfest)	Pittwater Inshore Series (R3)	Centreboard Racing Round 6 Class Training Tackers, Kids Learn to Sail
28	29	30	31			
	Women's Twilight Series (R1)	Club Marine Wednesday Spring Series (R9)	Twilight Spring Series (R2) Discover Sailing Session			

www.rpayc.com.au/eventcalendar \*\* Provisional Calendar subject to change \*\*





## NOVEMBER 2019

MONDAY	TUESDAY	WEDNESDAY	THURSDAY	FRIDAY	SATURDAY	SUNDAY
				<b>1</b> First Friday & Family Friday, Kids Halloween	<b>2</b> Estuary/SOP's Series (R3)	<b>3</b> Centreboard Racing Round 7 Class Training Tackers, Kids Learn to Sail
<b>4</b>	<b>5</b> <b>Melbourne Cup</b>	<b>6</b> Club Marine Wednesday Spring Series (R10)	<b>7</b> Twilight Spring Series (R3) Discover Sailing Session	<b>8</b> Club Marine BWPS (3) Cabbage Tree Island Race <i>Alfred's Table, a la carte Dining</i>	<b>9</b> Pittwater Inshore Series (R4)	<b>10</b> Centreboard Racing Round 8 Class Training Tackers, Kids Learn to Sail
<b>11</b>	<b>12</b> Womens Twilight Series (R2)	<b>13</b> Club Marine Wednesday Spring Series (R11)	<b>14</b> Twilight Spring Series (R4), inc Centreboard Families Discover Sailing Session	<b>15</b> <i>Alfred's Table, a la carte Dining</i>	<b>16</b> Estuary/SOP's Series (R4) Sprints Series (Round 4)	<b>17</b> Centreboard Racing Round 9 Class Training Tackers, Kids Learn to Sail
<b>18</b>	<b>19</b>	<b>20</b> Club Marine Wednesday Spring Series (R12) Harken Championship Welcome Event	<b>21</b> Twilight Spring Series (R5) Discover Sailing Session	<b>22</b> Family Friday	<b>23</b> Trophy Race	<b>24</b> Harken Teams Presentation Event
<b>25</b>	<b>26</b> Womens Twilight Series (R3)	<b>27</b> Club Marine Wednesday Spring Series (R13)	<b>28</b> Twilight Spring Series (R6) Discover Sailing Session	<b>Harken International Youth Match Racing Championship</b>		<b>Short Ocean Racing Championship (MHYC)</b>
				<b>29</b> Club Marine BWPS (R4) Newcastle RTN <i>Alfred's Table, a la carte Dining</i>	<b>30</b> Pittwater Inshore Series (R5)	

www.rpayc.com.au/eventcalendar \*\* Provisional Calendar subject to change\*\*

## DECEMBER 2019

MONDAY	TUESDAY	WEDNESDAY	THURSDAY	FRIDAY	SATURDAY	SUNDAY
30 Halwards Bistro Xmas Hrs	31 New Years Eve & RPYC NYE Party					1 Centreboard Racing Round 10 Class Training Tackers, Kids Learn to Sail
2	3	4 Club Marine Wednesday Spring Series (R14)	5 Twilight Spring Series (R7) Discover Sailing Session	6 First Friday	7 Estuary/SOP's Series (R5) Sprints Series (Round 5)	8 Centreboard Racing Round 11 Class Training Tackers, Kids Learn to Sail
9	10 Womens Twilight Series (R4)	11 Club Marine Wednesday Spring Series (R15)	12 Twilight Spring Series (R8) Discover Sailing Session	13 Alfred's Table a la carte dining Lunch & bubbles	14 Pittwater Inshore Series (R6) & Trophy Day 1	Fair 40 Regatta
16	17	18 Club Marine Wednesday Spring Series (R16)	19 Twilight Spring Series (R9) Discover Sailing Session	20 Family Friday, Club Christmas Party Term 4 concludes	21 Whisper Mug	22
23	24 Christmas Eve	25 Christmas Day	26 Boxing Day Club Marine BWPS (R5)	27 Halwards Bistro Xmas Hrs	28	29
			ROLEX Sydney to Hobart Yacht Race			Int 5.5m Pre-Worlds Regatta

www.rpayc.com.au/eventcalendar \*\* Provisional Calendar subject to change\*\*







Any amendments or updates to this page will be posted on the Club's website

## JANUARY 2020

MONDAY	TUESDAY	WEDNESDAY	THURSDAY	FRIDAY	SATURDAY	SUNDAY
		<b>1</b> New Years Day Hilwards Bistro Xmas His	<b>2</b>	<b>3</b>	<b>4</b>	<b>5</b>
<b>6</b>	<b>7</b>	<b>8</b>	<b>9</b>	<b>10</b>	<b>11</b>	<b>12</b>
Int 5.5 Scandinavian Gold Cup / Royal Kaag Classic Cup & Hanko Evolution Cup						
<b>13</b>	<b>14</b> Womens Twilight Series (R5)	<b>15</b> Club Marine Wednesday Summer Series (R1)	<b>16</b> Twilight Summer Series (R1) Discover Sailing Session	<b>17</b> Alfred's Table a la carte dining	<b>18</b> Estuary/SOPs Series (R6) Sprints Series (Round 6)	<b>19</b> Centreboard Racing - NPS
<b>20</b>	<b>21</b>	<b>22</b> Club Marine Wednesday Summer Series (R2)	<b>23</b> Twilight Summer Series (R2) Discover Sailing Session	<b>24</b> Family Friday	<b>25</b>	<b>26</b> Australia Day Australia Day Regatta (ASC)
<b>27</b>	<b>28</b> Womens Twilight Series (R6) Term 1 commences	<b>29</b> Club Marine Wednesday Summer Series (R3)	<b>30</b> Twilight Summer Series (R3) Discover Sailing Session	<b>31</b> Alfred's Table a la carte dining		
Dicko Cup 2020 - Cont.						

[www.rpayc.com.au/eventcalendar](http://www.rpayc.com.au/eventcalendar) \*\* Provisional Calendar subject to change\*\*

## FEBRUARY 2020

MONDAY	TUESDAY	WEDNESDAY	THURSDAY	FRIDAY	SATURDAY	SUNDAY
					<b>1</b> Club Marine BWPS (R6) - Sydney - Bird Island - Pittwater Pittwater Inshore Series (R7) & Trophy Day 2	<b>2</b> Centreboard Racing Round 13 Class Training
<b>3</b>	<b>4</b>	<b>5</b> Club Marine Wednesday Summer Series (R4)	<b>6</b> Twilight Summer Series (R4) Discover Sailing Session	<b>7</b> <i>First Friday</i>	<b>8</b> Estuary/SOP's Series (R7)	<b>9</b> Centreboard Racing Round 14 Class Training Tackers, Kids Learn to Sail
<b>10</b>	<b>11</b> Womens Twilight Series (R7)	<b>12</b> Club Marine Wednesday Summer Series (R5)	<b>13</b> Twilight Summer Series (R5), incl. Centreboard Families	<b>14</b> <i>Alfred's Table a la carte dining</i>	<b>15</b>	<b>16</b> Centreboard Racing Round 15 Class Training Tackers, Kids Learn to Sail
<b>17</b>	<b>18</b>	<b>19</b> Club Marine Wednesday Summer Series (R6)	<b>20</b> Twilight Summer Series (R6) Discover Sailing Session	<b>21</b> <i>Family Friday</i> Club Marine BWPS (R7) Port Hacking Race	Pittwater Regatta inc Summer OD & Sportsboat Regatta, Passage Series (Cat 7) & Performance Yacht (Cat 4) - IRC/ORC Regatta	
					<b>22</b> Pittwater Inshore Series (R8)	<b>23</b> Centreboard Racing Round 16 Class Training Tackers, Kids Learn to Sail
<b>24</b>	<b>25</b> Womens Twilight Series (R8)	<b>26</b> Club Marine Wednesday Summer Series (R7)	<b>27</b> Twilight Summer Series (R7) Discover Sailing Session	<b>28</b> <i>Degustation Dinner</i>	<b>29</b>	Friends of David Booth Trophy Race

www.rpayc.com.au/eventcalendar \*\* Provisional Calendar subject to change\*\*



## MARCH 2020

MONDAY	TUESDAY	WEDNESDAY	THURSDAY	FRIDAY	SATURDAY	SUNDAY
30	31					<b>1</b> Centreboard Racing Round 17 Class Training Tackers, Kids Learn to Sail Int 5.5m Australian Championship
2	3	<b>4</b> Club Marine Wednesday Summer Series (R8)	<b>5</b> Twilight Summer Series (R8) Discover Sailing Session	<b>6</b> First Friday	<b>7</b>	<b>8</b> Centreboard Racing Round 18 Class Training Tackers, Kids Learn to Sail
9	<b>10</b> Womens Twilight Series (R9)	<b>11</b> Club Marine Wednesday Summer Series (R9)	<b>12</b> Twilight Summer Series (R9) Discover Sailing Session	<b>13</b> Alfred's Table a la carte dining	Sydney Harbour Regatta (MHYC)	<b>15</b> Centreboard Racing Round 19 Class Training Tackers, Kids Learn to Sail
16	17	<b>18</b> Club Marine Wednesday Summer Series (R10)	<b>19</b> Twilight Summer Series (R10) Discover Sailing Session	<b>20</b> Alfred's Table a la carte dining	<b>21</b> Pittwater Inshore Series (R9)	<b>22</b> Centreboard Racing Round 20 Class Training Tackers, Kids Learn to Sail
23	<b>24</b> Womens Twilight Series (R10)	<b>25</b> Club Marine Wednesday Summer Series (R11)	<b>26</b>	<b>27</b> Family Friday	Club Marine Pittwater Sail Expo	<b>29</b> Trophy Race
						NSW Optimist NSW Championship

www.rpayc.com.au/eventcalendar \*\* Provisional Calendar subject to change\*\*



Any amendments or updates to this page will be posted on the Club's website





Any amendments or updates to this page will be posted on the Club's website

## MAY 2020

MONDAY	TUESDAY	WEDNESDAY	THURSDAY	FRIDAY	SATURDAY	SUNDAY
				<b>1</b> <i>First Friday</i>	<b>2</b> SheSails Womens Regatta Given Slade Regatta Sail Port Stephens Regatta cont.	<b>3</b> Two Handed & Womens Winter Series (R1)
<b>4</b>	<b>5</b>	<b>6</b> Wednesday Autumn Series (R6)	<b>7</b>	<b>8</b> <i>Alfred's Table, a la carte Dining</i>	<b>9</b> Lion Island Series (R1) Centreboard Presentation Beneteau Cup	<b>10</b> <b>Mothers Day</b>
<b>11</b>	<b>12</b>	<b>13</b> Wednesday Autumn Series (R7)	<b>14</b>	<b>15</b> <i>Family Friday</i>	<b>16</b> Lion Island Series (R2)	<b>17</b> Ice Breaker Winter Series (Round 1)
<b>18</b>	<b>19</b>	<b>20</b> Wednesday Autumn Series (R8)	<b>21</b>	<b>22</b> <i>Alfred's Table, a la carte Dining</i>	<b>23</b> Lion Island Series (R3)	<b>24</b> Dustbuster Series (Round 1)
<b>25</b>	<b>26</b>	<b>27</b> Wednesday Autumn Series (R9)	<b>28</b>	<b>29</b> <i>Alfred's Table, a la carte Dining</i>	<b>30</b> Lion Island Series (R4)	<b>31</b> Club Rally & Portuguese Beach Picnic

[www.rpayc.com.au/eventcalendar](http://www.rpayc.com.au/eventcalendar) \*\* Provisional Calendar subject to change\*\*

## JUNE 2020

MONDAY	TUESDAY	WEDNESDAY	THURSDAY	FRIDAY	SATURDAY	SUNDAY
1	2	3 Wednesday Waterford Series (R1)	4	5 First Friday	6	7
8	9	10 Wednesday Waterford Series (R2)	11	12 Family Friday	13 Winter Series (R1) Womens Helm Series (R1)	14 Two Handed & Womens Winter Series (R2) Dustbuster Series Round 2
15	16	17 Wednesday Waterford Series (R3)	18	19 Alfred's Table, a la carte Dining	20 Winter Series (R2)	21 Ice Breaker Winter Series (Round 2)
22	23	24 Wednesday Waterford Series (R4)	25	26 Alfred's Table, a la carte Dining	27 Winter Series (R3)	28 Club Rally & Portuguese Beach Picnic
29	30					

www.rpayc.com.au/eventcalendar \*\* Provisional Calendar subject to change\*\*



# JULY 2020

MONDAY	TUESDAY	WEDNESDAY	THURSDAY	FRIDAY	SATURDAY	SUNDAY
		<b>1</b> Wednesday Waterford Series (R5)	<b>2</b>	<b>3</b> First Friday Term 2 concludes	<b>4</b> Winter Series (R4)	<b>5</b> Two Handed & Womens Winter Series (R3) Dustbuster Series Round 3
<b>6</b>	<b>7</b>	<b>8</b> Wednesday Waterford Series (R6)	<b>9</b>	<b>10</b> Alfred's Table a la carte dining	<b>11</b> Winter Series (R5) Womens Helm Series (R2)	<b>12</b> Ice Breaker Winter Series (Round 2)
<b>13</b>	<b>14</b>	<b>15</b> Wednesday Waterford Series (R7)	<b>16</b>	<b>17</b> Volunteers Cocktail Party, Haywards Bistro Dining	<b>18</b> Winter Series (R6)	<b>19</b>
<b>20</b>	<b>21</b>	<b>22</b> Wednesday Waterford Series (R8)	<b>23</b>	<b>24</b> Alfred's Table a la carte dining	<b>25</b> Early Bird Series (R1)	<b>26</b> Club Rally & Portuguese Beach Picnic
<b>27</b>	<b>28</b>	<b>29</b> Wednesday Waterford Series (R9)	<b>30</b>	<b>31</b> Alfred's Table a la carte dining	Sydney Gold Coast Race (CYCA)	
Mick Hole Winter Ob & Sportsboat Regatta						
School Holiday Sailing Program (W1)						
School Holiday Sailing Program (W2)						
1 Aug						
2 Aug						
Tokyo 2020 Olympic Sailing Regatta - Enoshima Yacht Harbour						

www.rpayc.com.au/eventcalendar \*\* Provisional Calendar subject to change\*\*



Any amendments or updates to this page will be posted on the Club's website

## PROGRAM OF EVENTS

## AUGUST 2020

MONDAY	TUESDAY	WEDNESDAY	THURSDAY	FRIDAY	SATURDAY	SUNDAY
31					1 Early Bird Series (R2)	2 Two Handed & Womens Winter Series (R4)
3	4	5 Wednesday Waterford Series (R10)	6	7 First Friday	8 Early Bird Series (R3) Womens Helm Series (R3)	9 Dustbuster Series Round 4
Tokyo 2020 Olympic Sailing Regatta - Enoshima Yacht Harbour						
10	11	12 Wednesday Waterford Series (R11)	13	14 <i>Alfred's Table a la carte dining</i>	15 Early Bird Series (R4)	16 Ice Breaker Winter Series (Round 4)
17	18	19 Wednesday Waterford Series (R12)	20	21 <i>Alfred's Table a la carte dining</i>	22 Early Bird Series (R5)	23
24	25	26 Wednesday Waterford Series (R13)	27 <i>Sailors Safety Forum</i>	28 <i>Alfred's Table a la carte dining</i>	29 Early Bird Series (R6)	30 Club Rally & Portuguese Beach Picnic

[www.rpayc.com.au/eventcalendar](http://www.rpayc.com.au/eventcalendar) \*\* Provisional Calendar subject to change\*\*





# Twilight Racing On Pittwater

## TUESDAY

**Women's Twilights**  
Div 1 - 2  
*Spinnaker & Non Spinnaker*  
Alternate Tuesdays  
starting from  
29<sup>th</sup> October to 24<sup>th</sup> March

## THURSDAY

**Twilight Racing**  
Div 1 - 4  
*Spinnaker & Non Spinnaker*  
Every Thursday starting from  
17<sup>th</sup> October to 19<sup>th</sup> March

**Post-Race Dinner Served In Halyards**

## WEEKLY PRIZES

**The Royal Prince Alfred Yacht Club  
Racing starts at 1755hrs**

For more information visit the Sailing Office

[www.rpayc.com.au](http://www.rpayc.com.au) • 9998 3900 • [sailing@rpayc.com.au](mailto:sailing@rpayc.com.au)



The Royal Prince Alfred Yacht Club

# Wednesday Series

WHETHER NEW TO SAILING OR AN EXPERIENCED  
SAILOR COME ON DOWN AND ENJOY  
A FUN, COMPETITIVE AND SOCIAL SAIL ON PITTWATER

HELD ALL  
YEAR ROUND!  
FROM 1400HRS



email: [sailing@rpayc.com.au](mailto:sailing@rpayc.com.au)

phone: (02) 9998 3771



## SECTION 3.0 - PERPETUAL TROPHIES & SPECIAL AWARDS



The following Perpetual Trophies may be awarded in accordance with Club Tradition. Trophies shall be inscribed with the winning boat and owner's name.

### BLUEWATER SERIES

#### ***Alyth Trophy***

Awarded to the winning PHS boat in the Blue Water Pointscore Series.



#### ***Montague Island Trophy***

Awarded to the winning IRC boat in the Bluewater Pointscore Series.



#### ***Jim Robson Scott Memorial Trophy***

Awarded to the winning ORCi boat in the Bluewater Pointscore Series.



#### ***Ron Greenwood Memorial Trophy***

Awarded to the winning PHS boat in the annual Pittwater - Newcastle Return Yacht Race.



#### ***King Edward VII Trophy***

Awarded to the winning PHS boat in the annual Pittwater - Sydney - Bird Island Yacht Race.



#### ***CIG Trophy***

Awarded to the winning PHS boat in the Club Marine Bluewater Pointscore Series – Port Hacking Race.



#### ***Harry Quinn Trophy***

Awarded to the winning PHS boat in the Club Marine Bluewater Pointscore Series – Pittwater - Bird Island - Sydney Yacht Race.



## **BROKEN BAY OFFSHORE SERIES SHORT OCEAN POINTSCORE SERIES**

---

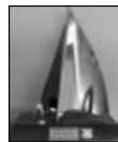
### ***Skye Mist Cup***

Awarded to the winning PHS boat in the Short Ocean Pointscore Series.



### ***Stormaway Trophy***

Awarded to the winning IRC boat in the Short Ocean Pointscore Series.



### ***Ernest Hunt Memorial Trophy***

Awarded to the winning ORCi boat in the Short Ocean Pointscore Series.



## **FLEET ONE**

---

### ***Albert Gold Cup***

Awarded to the winning PHS boat in Fleet 1 of Estuary Pointscore Series.



### ***R.E. Cunningham Trophy***

Awarded to the winning PHS boat in Fleet 1 of the Pittwater Inshore Series.



### ***Captain Cook Trophy***

Awarded to the winning boat in the Pittwater Inshore IRC Series.



### ***Race Official's Trophy***

Fleet 1 Trophy Day 1, Pittwater Inshore Series.

Awarded to the winning PHS boat in the last scheduled race of the Spring Season.



### ***King Edward VII Jug***

Fleet 1 Trophy Day 2, Pittwater Inshore Series.

Awarded to the winning PHS boat in the first scheduled race of the Summer Season.



## FLEET TWO

---

### ***Hornblower Trophy***

Awarded to the winning PHS boat in Fleet 2 of the Estuary Pointscore Series.



### ***Albert Gold Cup II***

Awarded to the winning PHS boat in Fleet 2 of the Pittwater Inshore Series.



### ***Hedley Bryant Trophy***

Fleet 2 Trophy Day 1, Pittwater Inshore Series.

Awarded to the winning PHS boat in the last scheduled race of the Spring Season.



### ***Ailsa Trophy***

Fleet 2 Trophy Day 2, Pittwater Inshore Series.

Awarded to the winning PHS boat in the first scheduled race of the Summer Season.

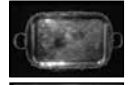


## FLEET THREE

---

### ***Michael Guermontrez Trophy***

Awarded to the winning PHS boat in Fleet 3 of the Pittwater Inshore Series.



### ***A.N. Thomson Trophy***

Fleet 3 Trophy Day 1, Pittwater Inshore Series.

Awarded to the winning PHS boat in the last scheduled race of the Spring Season.



### ***Joy West Trophy***

Fleet 3 Trophy Day 2, Pittwater Inshore Series.

Awarded to the winning PHS boat in the first scheduled race of the Summer Season.



### ***Charlie Barr Trophy***

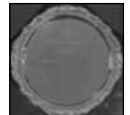
Fleet 3 Most Improved Boat.



### ***Donald Silver Memorial Trophy***

Fleet 3 Trophy Day 3, Pittwater Inshore Series.

Awarded to the winning boat on PHS in the last Pittwater Inshore Race of the summer season.



## ETCHELLS CLASS

---

### ***Lighthouse Trophy***

Awarded to the winning boat in the International Etchells Class, Estuary Series.



### ***Calibre Trophy***

Awarded to the winning boat in the International Etchells Class Mini Regatta Series.



## SPORTS BOATS FLEET

---

### ***Ione Cup***

Awarded to the winning boat on PHS in the Mini Regatta Series.



### ***Beatrice Harvey Memorial Trophy***

Awarded to the winning boat on SMS in the Mini Regatta Series.



## CLASSIC BOAT FLEET

---

### ***Couta and Classic Inshore Series Trophy***

Awarded to the winning PHS boats in each division of the Couta and Classic Boat Series.



## ELLIOTT 7 CLASS

---

### ***The Dusterbuster Winter Trophy***

Awarded to the winning Elliott 7 Class boat in the Dusterbuster Winter Series.



## INT 5.5M CLASS

---

### ***The 5.5 Metre Silver Cup***

Awarded to the winning boat of the Classic Division (pre 1970).



### ***The Mini Albert Gold Cup***

Awarded to the winning 5.5m in the Pittwater Gold Cup Twilight Race.



### ***The Gold Cup***

Awarded to the Winner of the Evolution and Modern Division (post 1970).



### ***The Fred Craig Juno Handicap Trophy***

Awarded to the first 5.5m at the National Championships on handicap that has not won another Trophy.



## YOUNG 88 CLASS

---

### ***Gunga Din Sword***

Awarded to the winning boat on scratch of the Young 88 Pittwater Regatta.



### ***The Chinook Trophy***

Awarded to the winning boat on PHS of the Young 88 Pittwater Regatta.



## COMMODORES CUP SERIES

---

### ***Commodores Trophy***

Awarded to the winning PHS boat in each division of the Commodores Cup Series



## SERIES & SPECIAL EVENT TROPHIES

---

### ***Friends of David Booth Trophy***

Awarded on line honours in the Friends of David Booth race.



### ***Gwen Slade Trophy***

Awarded to the winning boat in the Etchells Ladies Regatta.



### ***Graeme Norman Memorial Trophy***

Awarded to the winning PHS boats in each division of the Winter Series.



### ***Gipsy Moth Trophy***

Awarded to the winning PHS boat in the Two Handed Pointscore Series winners.



### ***Dicko Cup***

Awarded to the winning boat in the Australia Day Marathon Weekend Regatta.



### ***Waterford Trophies***

Awarded to the winning PHS boats in each division of the Wednesday Waterford Series.



### ***Basin Trophy***

Awarded to the winning PHS boats in each Division of the Opening Day Race.



### ***Women's Evening Pointscore Trophy***

Awarded to the winning PHS boats in each Division of the Tuesday Women's Twilight Series.





### ***Old Timer's Tackle Trophy***

Awarded to the winning PHS boat in the Old Timers Race winner.



### ***Whisper Mug Regatta***

The Whisper Mug – awarded to PHS Winner

Josie Trophy – awarded to PHS 2nd Place

The Starters Cup – awarded to PHS 3rd Place

Zebulon Plate – awarded for Line Honours Winner



### ***The Mick Hole Memorial Trophy***

Awarded to the winning boat from a Class/Division selected by the Race committee in the Winter One Design and Sports Boat Regatta.



## **THE PITTWATER REGATTA**

---

### ***The Petrel Cup***

Awarded to the winning PHS boat in the Pittwater Regatta.



### ***The Pittwater Bowl***

Awarded to the winning IRC boat to the Pittwater Regatta.



## **HARKEN INTERNATIONAL YOUTH MATCH RACING CHAMPIONSHIP**

---

Awarded to the Winning team in the Harken International Match Racing Championship.

Established in 1992, the Harken International Youth Match Racing Championship has grown into a world-renowned international youth event. The winner of the 'Harken' will be awarded the 'Rockin'-Robin Trophy'. Robyn Wiltshire presented the trophy in memory of her husband Grant and son Robert, Andrew Young & Jeff Smith, all Club members who tragically lost their lives at sea aboard the yacht 'Rockin' Robin' whilst on passage to Fiji in 1990.



## **DAVID LUKINS MEMORIAL MATCH RACING CHAMPIONSHIP**

---

Award to the winning team in the annual David Lukins Memorial Match Racing Regatta.

The sees current and former Youth Development program participants & Club Members compete in a Grade 4 Match Race Event.

The Regatta is held in memory of David Lukins, a tireless volunteer for the club.



## SPECIAL AWARDS

---

### ***The Master Mariner William Henry Stannard Trophy***

Awarded at the discretion of the Committee for an act of Outstanding Seamanship.



### ***Colin "Fossil" White Gun Boat Trophy***

Yacht that gets the most "guns" but has not won its Fleet from Saturday Pointscore Series.



### ***Trygve Halvorsen Trophy***

Offshore Achievement of the year.



### ***Alan Rich Trophy***

Best Performing Yacht Overall.



### ***Participation Award***

Awarded to the Yacht(s) that participate in the most Club races as scheduled in the Sailing Handbook from Opening Day, September to April. Sprint Series shall be counted as one (1) race.

### ***Club Volunteer of the Year Award***

Awarded for outstanding voluntary contribution to the Club by a Club Member.

### ***Club Yachtsman of the Year Award***

Awarded to the most accomplished sailor or sailors.

### ***Clubmanship Award***

The Clubmanship Trophy recognizes the efforts of Members who have, over a period of many years, made a significant contribution to the Club across a range of activities. Desirably these not only include direct Member activities but also services to the Club in developing the physical and human capital of the Club. It is to be awarded at the Annual General Meeting to a deserving person selected by the Commodore.



# SECTION 4.0 - NOTICE OF RACE AND SAILING INSTRUCTIONS



This Section 4 and associated appendices form the Notice of Race and Sailing Instructions (NoR/SI) as required by the RRS.

## 1 NOTICE TO PARTICIPANTS / LIABILITIES OF COMPETITORS

---

- 1.1 By participating in any Club Event you agree to the conditions in this Notice and waive all claims and demands whatsoever of any action you may have against the Club, its committees, officers, officials, organisers and members in relation to any injury, loss or damage suffered as a consequence of your participation in any of the Club Events.
- 1.2 Participation in Yachting and other events ("Club Events") held by the Club, is at your own risk and responsibility. Competitors shall accept that their participation in a race is at their exclusive risk in every respect. The Club takes no responsibility for your safety or health during any Club Event in which you participate. Specific attention is drawn to RRS 4 which states: "The responsibility for a boat's decision to participate in a race or to continue racing is hers alone" and AS Special Regulations 1.02.1 which states inter alia that: "The safety of a boat and her crew is the sole and inescapable responsibility of the person in charge."
- 1.3 The Organising Authority and its officers, members, staff and agents accept no responsibility in respect of loss of life, personal injury or loss or damage to property which may be sustained by reason of their participation or intended participation in the series or howsoever arising in connection with the series.
- 1.4 Where visibility is restricted or compromised due to a boat's design, sail configuration and/or crew agility, the Person-in-Charge (PiC) shall employ measures that will ensure they have adequate visibility prior to and during racing.
- 1.5 Whilst racing the PiC shall ensure they have adequate and competent crew and/or equipment to maintain a proper look-out by sight and hearing as well as by all available means appropriate in the prevailing circumstances and conditions in order to take appropriate action to avoid a collision.
- 1.6 Any person on board should be in reasonable health, have a reasonable level of fitness and be a competent swimmer in order to participate in any on water Club Event. Any person suffering medical conditions should consult their medical adviser and follow their advice about participating in any Club Event. Any person under the influence of alcohol or affected by any other substance shall not participate in any Club Event. The wearing of a Personal Floatation Device is recommended when participating in on-water Club Events.
- 1.7 Participants should be aware that participation in the sport of yachting exposes participants to inherent risks as a result of which personal injury (and sometimes death) can, and does, occur.



- 1.8 For all events organised by the club, the Owner(s), Charterer(s), PiC and Crew grant at no cost the absolute right and permission to use their names, voices, images, likenesses, and biographical material, as well as representations of their boat in any media (including television, print and internet), to the Organising Authority.
- 1.9 Competitors and crew names, voice, image, likeness and biographical material shall not be used by the Organising Authority, Host Club, or any event sponsors in a way which constitutes an endorsement of sponsors' products by said competitors and crew, unless the relevant competitor or crew is engaged by the sponsor to endorse said products or gives his/her prior written consent to such use. By participating in RPAYC club events the Owner(s), Charterer(s) and the PiC and Crew shall acknowledge and accept the granting of media rights referred to in this paragraph.
- 1.10 For the purposes of communication, a boat's owner or representative's contact details shall be shared with the applicable fleet captain. If you wish to opt out of sharing your details, please contact the Sailing Office.

## 2 RULES AND REGULATIONS

---

- 2.1 The Organising Authority is The Royal Prince Alfred Yacht Club (RPAYC).
- 2.2 All races shall be governed by the current versions of the:
  - (a) Rules, as defined in the Racing Rules of Sailing (RRS);
  - (b) Prescriptions of Australian Sailing;
  - (c) Appendix T of the RRS (Arbitration);
  - (d) World Sailing Appendix WP of the RRS;
  - (e) IRC 2019 Rules Parts A, B, C, if applicable;
  - (f) ORC Rating System Rules 2019, if applicable;
  - (g) Class Rules, if applicable;
  - (h) Australian Sports Boat Association (SMS) rules and constitution, if applicable;
  - (i) Australian Sailing Special Regulations (AS SR) and any RPAYC special equipment requirements.
- 2.3 RRS 51 is amended to "a boat with movable ballast or variable ballast (within the meaning of those terms in the AS SR) may move that ballast for the purpose of changing trim or stability".
- 2.4 RRS 52 Manual Power is deleted.
- 2.5 RRS 41 is amended by adding the following clauses:
  - (e) oral advice from coaches appointed by RPAYC.
  - (f) help from the Race Committee (RC) which may be solicited.
- 2.6 RRS 62.1 is amended so that failure to receive VHF communication from the RC shall not be grounds for redress.
- 2.7 A boat retiring (RET) from a race shall advise the Race Committee Vessel as soon as practicable after the decision is made but no later than the time limit of the race.



- 2.8 VHF Radio – A boat’s VHF radio shall be switched ON and be tuned to VHF Channel 77 or 72 (as detailed in “Specific Series Instructions” for each series). Where capable, boats should maintain a listening watch on VHF 16 at all times. Not protestable by a boat. Changes RRS60.1.

### 3 ELIGIBILITY and ENTRY

- 3.1 A boat agrees to be governed by the Racing Rules of Sailing.
- 3.2 The minimum waterline length (LWL) of a boat shall be 5.5m.
- 3.3 The minimum number of crew on board and the minimum age of its skipper shall be:

Series or Event	Min. no. crew	Min. age of skipper
Short Offshore Series	2	18
All Inshore Series	2	16

- 3.4 The attention of Owners and/or Persons-in-Charge is drawn to RRS46 Crew Eligibility: “any crew member that sails in more than three (3) races in any one sailing season, shall be a member of a Club affiliated to a MNA and an Australian Sailing Member”.
- 3.5 A boat shall enter via the online electronic entry system at [www.rpayc.com.au](http://www.rpayc.com.au). Unless otherwise accepted by the Sailing Office, an online Entry must be received by the Sailing Office, accompanied by the relevant entry fees, eligibility documents and rating certificates at least 24 hours prior to the start of the applicable race. Entry Fees are published online at [www.rpayc.com.au](http://www.rpayc.com.au). For member’s discounted entry fees, apply upon entering.
- 3.6 Multiple series entry is available through the online entry system at \$50 administration fee for full members, \$865 for non-members (inclusive of administration fee). This excludes the Commodore’s Cup series which must be entered separately (see Appendix G).
- 3.7 The Owner and/or the PiC of a boat (refer to RRS 46) shall list their name(s) and date of acknowledgement of the Conditions of Entry in their boat’s Entry Form. Any change to the PiC of a boat shall be updated with the Sailing Office prior to the applicable race.
- 3.8 A boat’s entry is not accepted until the appropriate completed documentation has been received and approved by the Sailing Office.
- 3.9 Full Members’ Conditions of Free Series Entry
- Free series entry is available to full members. Select Exempt. “Full Member Entry”, when completing your online Entry Form. This excludes the Commodore’s Cup series which must be entered separately (see Appendix G).
  - Members shall be financial throughout the course of the current season.
- 3.10 Free entry fees apply to series entries only. Casual entry fees may otherwise be applicable.
- 3.11 Late fees are applicable to all competitors.



## 4 SAFETY

---

- 4.1 At times of heightened risk, lifejackets shall be worn by all crew members.
- 4.2 Boats shall comply with the AS SR, Part 1, Section 2:
- (a) Category 4 for racing in the Short Offshore Series.
  - (b) Category 7 all other Series/Events.
  - (c) Unless otherwise agreed by the Sailing Office, this is initially achieved by ensuring that a valid AS SR compliance audit form for the appropriate race category or higher is lodged and approved by the Sailing Office at least 24 hours prior to the start of the applicable race.
- 4.3 In addition to complying with the AS SR, boats shall comply with the RPAYC additional Special Regulation requirements and the Roads and Maritime Services (RMS) regulations for vessels operating in "Open Waters". These additional requirements are:
- (a) RPAYC Additional Safety Equipment for Category 7:
    - (i) *Navigation lights (fixed or removable);*
    - (ii) *VHF transceiver (fixed or waterproof handheld);*
    - (iii) *V-Sheet;*
    - (iv) *Magnetic compass;*
    - (v) *Flares; 2 x orange, 2 x red;*
    - (vi) *Water; minimum 2L per person;*
    - (vii) *Lifejackets in service complying with AS4758-2015 (min. level 100) or AS1512-1996 (Type 1) or equivalent or more stringent overseas standard for all persons on board;*
    - (viii) *An effective sound signalling device e.g. fog horn;*
    - (ix) *A thermal (space) blanket for the treatment of hypothermia;*
    - (x) *Emergency Contact Sticker for Pittwater displayed prominently (available from Reception.);*
    - (xi) *Appropriate chart or map of the sailing area;*
  - (b) RPAYC Additional Safety Equipment for Category 4:
    - (i) *EPIRB (registered with AMSA in the name of the competing boat and boat owner);*
    - (ii) *Jackstays (recommended);*
    - (iii) *Crotch straps (recommended);*
    - (iv) *Lifejackets in service complying with AS4758-2008 (min. level 150) or AS1512-1996 (Type 1 not less than 150N) or an equivalent or more stringent overseas standard for all persons on board;*
    - (v) *A thermal (space) blanket for the treatment of hypothermia;*
    - (vi) *Emergency Contact Sticker for Pittwater displayed prominently.*
- 4.4 As approved by Australian Sailing (AS SR 1.01.3(b)), Etchells may use anchors that are compliant with Etchells Class rule C.5.1 (a) in lieu of Special Regulations Part 1, 4.05 when competing in club racing.
- 4.5 Where a change of boat ownership occurs any existing AS SR compliance audit form approved prior to the change of ownership is void. The boat shall be re-audited in the case of an ownership change and meet the requirements of 4.2 and 4.3 to be eligible to compete in RPAYC race events.



- 4.6 A valid AS SR compliance audit form at the commencement of a series shall apply for that series, except when a new audit for that AS SR category is done.
- 4.7 The number of people on board shall not exceed the maximum crew number specified on the boat's AS SR compliance audit form.

## 5 NOTICES TO COMPETITORS

---

- 5.1 Notices to competitors shall be posted on the RPAYC Official Notice Board, located in the hallway adjacent to the reception area of the RPAYC Clubhouse.
- 5.2 Notification of notices may be broadcast by email and text messages. Notifications not received shall not be subject to protests or constitute grounds for redress (amends RRS 60.2 and 62).

## 6 SIGNALS

---

- 6.1 Signals made ashore shall be displayed from the Club flagpole located on the Sundial lawn in front of the RPAYC Clubhouse.

## 7 AMENDMENTS

---

- 7.1 Amendments to the NoR / SI made ashore shall be posted on the Official Notice Board before 0930hrs for scheduled races on the day they shall take effect, except amendments to the NoR / SI for scheduled Twilight races shall be posted before 1330hrs on the day they shall take effect.
- 7.2 Amendments to the NoR / SI made on-water, for that day or race, shall be communicated on VHF Channel (77 or 72). The Race Committee Vessel shall display flag "3rd Substitute" to indicate an amendment has been made.

## 8 DIVISIONS (FLEETS) & CLASSES

---

- 8.1 The Race Committee shall allocate (and reallocate if necessary) all entered eligible boats into Divisions and or Classes as it considers appropriate and display a boat's classification in the List of Competitors published online prior to the first race in a series.
- 8.2 The minimum number of participating boats for a division is five (5).
- 8.3 A boat shall sail in the division as allocated by the Race Committee.

## 9 HANDICAPS AND MEASUREMENT

---

- 9.1 A Performance Handicap System (PHS) handicap shall apply to boats for all Series, other than those deemed one design classes. The PHS shall be arbitrary where a Time Correction Factor (TCF) for the boat is determined by the Race Committee. The TCF determination shall not be subject to protest or constitute grounds for redress. This amends RRS 60.1 and 62.



- 9.2 The Race Committee reserves the right to adjust a boat's PHS handicap at any time.
- 9.3 Rating Certificates, IRC, ORC and SMS handicapping ratings may also be used for applicable series. Rating certificates shall be valid for 2019.
- 9.4 A boat may only be entered into IRC if the boat has a valid IRC Endorsed Certificate.
- 9.5 A boat may only be entered into ORC if the boat has a valid ORC Certificate.
- 9.6 Rating certificates shall be applied from the date submitted to the Sailing Office and shall not be back dated for previous races.
- 9.7 The Race Committee and/or OA may require re-measurement of any boat.
- 9.8 An Event Handicap (EHC) may also be used. EHC shall be arbitrary where an event handicap for the boat is determined by the Race Committee. The event handicap determination shall not be subject to protest or constitute grounds for redress. This amends RRS 60.1 and 62.
- 9.9 A Pursuit Race handicap shall be arbitrary where a starting handicap for the boat is determined by the Race Committee. The starting handicap determination shall not be subject to protest or constitute grounds for redress. This amends RRS 60.1 and 62.
- 9.10 Below are the applicable Rating/Handicap for each Series:

Event / Series	Rating/Handicap Applicable
Pittwater Inshore Series	PHS; IRC; ORC; OD
Sprint Series	OD; PHS; SMS; ORC; EHC
Wednesday Non-Spinnaker Series	PHS; ORC
Tuesday Women's Twilight Series	PHS; ORC
Thursday Twilight Series	PHS; ORC
Short Offshore & Estuary Series	PHS; IRC; ORC
Commodore's Cup	PHS; ORC
Lion Island Series	PHS; IRC; ORC
Two Handed Series	PHS; ORC
Women's Winter Series	PHS; ORC
Winter Series	PHS Pursuit race
Early Bird Series	PHS Pursuit race

## 10 CHANGE OF HELM & ALTERATIONS AFFECTING PERFORMANCE

- 10.1 Any change in the Helmsperson or modifications to the hull, engine, propeller, trim, spars, sail area or any other alterations that may alter that boat's performance shall be notified in writing to the Sailing Office at least 24 hours before the race affected by the modification or alteration.





## 11 THE START

---

- 11.1 The starting line shall be between the staff on the Race Committee Vessel displaying an orange flag and the course side of an orange inflatable mark on the other end of the line.
- 11.2 The Race Committee may remove the orange flag no less than 10 minutes after a starting signal. A boat cannot start after the orange flag is removed.
- 11.3 A boat that may not otherwise arrive in the starting area until after her preparatory signal, may use her engine or be towed to enable her to start under sail alone. The boat shall, before starting, stop her engine or drop the tow and then complete two (2) 360° turns in the same direction before starting. This amends RRS 42.
- 11.4 If Flag "V" is displayed on the Race Committee Vessel with the course number, the first mark of the course shall be an inflatable mark laid a minimum of 0.5NM to windward of the starting line. Boats shall round this mark to Port, if a red flag is displayed below Flag "V" or to Starboard if a green flag is displayed below Flag "V".

When an inflatable windward mark is laid, the second mark of the course shall be the first mark as described in the current course list.

## 12 THE FINISH

---

- 12.1 The finishing line shall be between the staff on the Race Committee Vessel displaying an orange flag and the course side of an inflatable mark nearby.

## 13 RACING PENNANT & DIVISION COLOUR PENNANT

---

- 13.1 RPAYC members shall prominently display the Club Racing Pennant. The blue half of the pennant is to be displayed uppermost.
- 13.2 Visiting boats shall prominently display their own club's burgee.
- 13.3 In addition to 13.1 or 13.2, boats shall display their division pennant as allocated by the Race Committee.
- 13.4 Pennants shall be flown from the backstay or starboard shroud from the Warning Signal of each race until finishing or retiring. This is not protestable by a boat. Changes 60.1.

## 14 COURSES

---

- 14.1 The courses to be sailed shall be selected from the entire list contained in the list of courses.
- 14.2 The course shall be displayed from the Race Committee Vessel at or before the Warning Signal for each division.
- 14.3 All marks are to be rounded to starboard unless otherwise indicated (P), denoting a port rounding.



## 15 TIME LIMIT

---

- 15.1 RRS 35 is deleted. Unless amended in the specific series instructions a time limit is absolute, after which no boat shall finish.
- 15.2 Boats still racing when the time limit expires shall be scored one (1) more place than the number of boat finishing within the time limit. Such boats will be scored time limit expired (TLE). This amends RRS 35, A4.2 and A5.

## 16 SHORTENING COURSE

---

- 16.1 RRS 32.2 is amended by adding:
- (d) on a leg of the course, between the Race Committee Vessel displaying flag "S" and an inflatable mark nearby.

## 17 ALTERNATIVE PENALTIES

---

- 17.1 RRS 44.1 is amended in that the penalty for breaking a rule of RRS Part 2 shall be a One-Turn Penalty, except the penalty for breaking a rule of RRS Part 2 occurring within the zone as defined in the RRS shall be a Two-Turn Penalty.
- 17.2 The penalty, if any, for any infringement of the rules other than RRS Part 2 is at the sole discretion of the protest committee and may be other than disqualification. This changes RRS64.1.

## 18 PROHIBITED WATER (WHICH RANKS AS AN OBSTRUCTION)

---

- 18.1 Boats shall not sail within the water bounded by the registered moorings and the adjacent shoreline.
- 18.2 All navigational marks shall be passed on their designated side.
- 18.3 In accordance with RMS Regulations, race participants shall keep at least 30 metres from any mooring or structure when manoeuvring in the vicinity of the starting area or during racing.
- 18.4 Race participants shall maintain a minimum distance of 200 metres from all islands, headlands and charted hazards when operating in open waters during a sailing event. This is not protestable by a boat. Changes RRS 60.1.
- 18.5 After starting, boats shall not cross a RPAYC starting line.
- 18.6 Unless finishing, boats shall not cross a RPAYC finishing line.
- 18.7 These areas referred to in NoR / SI 18 rank as obstructions.

## 19 NON-SPINNAKER

---

- 19.1 In non-spinnaker races or divisions, boats shall use only a mainsail and one headsail (as defined by RRS 50.4) at a time. The headsail shall be fully hanked or attached by means of a luff groove device to the permanent forestay.



## 20 SCORING

---

- 20.1 1 race shall constitute a series.
- 20.2 RRS A9 is changed to; A boat that did not come to the starting area shall be scored points for the finishing place 5 more than the number of starters, but no more than the number of series entries for that race plus 1.
- 20.3 When fewer than 5 races have been completed, a boat's series score shall be the total of here race scores.
- 20.4 When from 5 to 9 races have been completed, a boat's series score shall be the total of her race scores excluding her worst score.
- 20.5 When from 10 to 12 races have been completed, a boat's series score shall be the total of her race scores excluding her two worst scores.
- 20.6 When 13 or more races have been completed, a boat's series score shall be the total of her race scores excluding her three worst scores.
- 20.7 When a day's racing has been abandoned due to adverse weather conditions the race(s) shall not be rescheduled. (This amends RRS 81).
- 20.8 Boats that are casual entrants shall not score points for the series. (This amends RRS A2.2).
- 20.9 A boat that competes without ensuring the Sailing Office has received and approved their valid AS SR compliance audit form shall be scored by the Race Committee as DSQ without a hearing (this amends RRS 63.1 and Appendix A5).
- 20.10 PHS Scoring: Results shall be decided by the application of the Time Correction Factor (TCF) as a multiplier of elapsed times. The boat with the lowest corrected time (after application of scoring penalties, if any) shall be scored first and the other boats scored accordingly.
- 20.11 IRC Scoring: As per class rules. The boat with the lowest corrected time (after application of scoring penalties, if any) shall be scored first and the other boats scored accordingly.
- 20.12 ORC Scoring: Results shall be decided by the application of the Time-on-Time Simplified Scoring Option, using the ToT applicable rating (Offshore, Inshore or Non-Spinnaker) as printed on each boat's ORC Certificate as a multiplier of elapsed time. The boat with the lowest corrected time (after application of scoring penalties, if any) shall be scored first and the other boats scored accordingly.
- 20.13 Sports Boat Measurement System (SMS) Scoring: Results shall be decided by the application of the SMS Time Correction Factor (TCF) as shown on a boat's SMS Certificate as a multiplier of elapsed time. The boat with the lowest corrected time (after application of scoring penalties, if any) shall be scored first and the other boats scored accordingly.
- 20.14 Event Handicap (EHC) Scoring: Results shall be decided by the application of the EHC as a multiplier of elapsed time. The boat with the lowest corrected time (after application of scoring penalties, if any) shall be scored first and the other boats scored accordingly.
- 20.15 Pursuit Race Scoring: Handicaps are conceded at the start. Boats shall be scored in the order they finish.



## 21 ARBITRATION

---

- 21.1 Should all parties agree, an arbitration hearing as per RRS Appendix T may be conducted for all protests lodged in accordance with RRS 61 that allege an infringement of RRS Part 2 or Part 4.

## 22 PROTESTS

---

- 22.1 For Wednesday Races, Thursday Twilight Races, Women's Twilight Races and Pittwater Inshore Races the protest time limit shall be one (1) hour after the protesting boat's finishing time.
- 22.2 For the One Design and Sportsboat Sprint Series the protest time limit shall be one (1) hour after the finishing time of the last boat in the last race of the day.
- 22.3 Protests may be heard at the RPAYC Clubhouse as soon as possible after the finish of protest time but generally protests will be heard on the following Wednesday night. Requests to withdraw or postpone a hearing shall be made in writing to the Protest Committee Chairperson via the Sailing Office.
- 22.4 To satisfy the requirements of RRS 63.2, notification of the time and place of a hearing and the parties involved shall be by email and or/text message. Failure to receive such communication shall not be grounds for redress.

## 23 PRIZES

---

- 23.1 Prizes may be awarded at the discretion of the Organising Authority.
- 23.2 Prizes may be awarded for each race at the daily presentation.
- 23.3 If there are five (5) or less starters in a race held, only the first place shall be awarded.
- 23.4 A boat shall only be awarded a prize for one (1) handicap category it is entered in.
- 23.5 No pointscore prizes shall be issued where there are less than five (5) boats in the division.
- 23.6 Perpetual trophies may be awarded at the Annual Presentation.

## 24 INSURANCE

---

- 24.1 All boats shall have a current marine Public Liability and Third-Party Property insurance policy stating the name of the boat with a minimum racing cover of AUD\$10 million or equivalent thereof for any incident.

## 25 SAIL NUMBERS

---

- 25.1 A boat shall sail under the sail number advised on its Entry Form unless the Sailing Office is notified and the change is approved not later than two (2) hours before the start of the race and the change is approved.



## 26 OTHER INSTRUCTIONS

---

- 26.1 All boats shall abide by directions of NSW Roads and Maritime Services (RMS) Boating Service Officers.
- 26.2 Any boat reported by NSW RMS as having contravened NSW RMS regulations shall be disqualified without a hearing (amends RRS 63.1). Any alleged infringement of this clause shall not be grounds for protest by another competitor.
- 26.3 Competitors shall notify the Sailing Office of any contact incident occurring during racing whether or not it results in a Race Protest or a report to NSW RMS. The RPAYC is obliged under the terms of its Aquatic Licence to prepare a report of all contact incidents occurring during racing whether or not they result in a Race Protest or a report to NSW RMS.

## MARKS AND DESCRIPTIONS

### 27 DESCRIPTION OF MARKS

---

- 27.1 Inflatable Marks may be of orange, yellow, pink, red or green in colour.
- 27.2 The letters "BJ", "WM", "BH" or figures "01", "02", "03", "04" and "08" may be displayed on the respective marks.
- 27.3 All marks are designated as rounding marks except when a mark is designated as a passing mark, indicated by 'mark description' (pass).

### 27 MARK LOCATIONS

---

- 27.4 The Latitudes, Longitudes, Distances, Compass Bearings shown herein are intended to assist the competitors locate various rounding marks, and shall be regarded as approximate only. All compass bearings are magnetic.
- 27.5 The approximate magnetic bearing (axis) from the BJ mark to the 01 mark may be displayed from the Committee Vessel. Marks 02, 03, 04 and 08 shall be laid on approximately the same bearing from BJ as 01.
- 27.6 Below are the approximate locations of the marks:
- 01** Inflatable mark shall be laid 1 NM to seaward from the BJ mark.
  - 02** Inflatable mark shall be laid 2 NM to seaward from the BJ mark.
  - 04** Inflatable mark shall be laid 4 NM to seaward from the BJ mark.
  - 08** Inflatable mark shall be laid 8 NM to seaward from the BJ mark.
  - 1PT** First Point. Inflatable mark laid approximately at 33° 29.6' S, 151° 29.2' E.
  - 2PT** Two Points. Inflatable mark laid approximately at 33° 30.8' S, 151° 27.6' E.
  - V** Windward Mark. Refer NoR / SI 11.4.



- BH** Box Head. Inflatable mark laid east of Lion Island, approximately at 33° 33.3' S, 151° 20.4' E.
- BJ** Barrenjoey. Inflatable mark laid in the vicinity of Barrenjoey Head and Lion Island. (This mark may be the pin end of the Short Offshore starting line as identified by the Race Committee).
- CV** Clareville/Avalon. Fixed Yacht Mark either an orange can or yellow pyramid situated northwest of Avalon Sailing Club, approximately at 33° 37.6' S, 151° 18.6' E.
- EB** Ellis Buoy. Inflatable mark laid to the southwest of the Clareville mark.
- FS** Flint & Steel. Inflatable mark laid approximately at 33° 34.1' S, 151° 17.4' E, northeast of Flint & Steel Point.
- J** Juno. Fixed Yacht Mark either an orange can or yellow pyramid situated 100m east of Juno Point, at approximately 33° 34.0' S, 151° 15.9' E.
- LI** Lion Island. The summit of Lion Island situated between West Head and Box Head.
- LN** Longnose Point. Fixed Yacht Mark either an orange can or yellow pyramid situated southwest of Longnose Point, approximately at 33° 37.4' S, 151° 18.0' E.
- LR** Long Reef. Inflatable mark laid approximately at 33° 45.0' S, 151° 22.0' E, approximately 10NM southeast of Barrenjoey Headland.
- MB** Mackerel Beach. Fixed Yacht Mark, an orange can situated between Currawong and Great Mackerel Beach, approximately 33° 35.7' S, 151° 18.3' E
- MR** Maitland Reef. Inflatable Mark laid at approximately 0.7NM E of Maitland Reef. Third Point bears approximately 022°. Gerrin Point bears approximately 263° 33' 32.1' S, 151° 24.4' E.
- P** Patonga Mark. Inflatable mark laid approximately at 33° 33.4' S, 151° 16.7' E, south of Eastern Point or Brisk Bay.
- PB** Palm Beach Mark. Inflatable mark laid approximately at 33° 35.7' S, 151° 20.5' E.
- RP** Rocky Point. Fixed Yacht Mark, an orange can situated to the northeast of Rocky Point, approximately 33° 37.9' S, 151° 17.4' E.
- SDP** Soldiers Point. Fixed Yacht Mark, an orange can situated to the north of Soldiers Point, approximately 33° 36.0' S, 151° 18.3' E.
- SP** Stokes Point. Fixed Yacht Mark, an orange can situated approximately 200 metres northwest of Stokes Point, approximately 33° 36.7' S, 151° 18.8' E.
- SPC** Salt Pan Cove. Inflatable mark laid approximately northwest of Salt Pan Cove Maritime Beacon, towards Scotland Island.
- TB** Towlers Bay. Fixed Yacht Mark, an orange can situated approximately 400 metres from the shoreline in Morning Bay (Towlers Bay), approximately 33° 37.5' S, 151° 17.6' E.
- TGL** Terrigal Mark. Inflatable mark laid approximately at 33 27.6' S, 151° 30.0' E.
- TP** Taylors Point. Fixed Yacht Mark, orange can situated to the northwest of Taylors Point Wharf, approximately at 33° 37.9' S, 151° 18.3' E.



- WH** West Head. Inflatable mark laid in the vicinity of First Head and Shark Rock (Barrenjoey and West Head).
- WM** Wing Mark. Inflatable mark shall form part of a right-angled triangle with BJ and O2 forming the hypotenuse. The approximate bearing from O2 to WM shall be the bearing displayed from the Committee Vessel minus 135°.
- WP** Walker Point. Inflatable mark situated 200 metres northeast of Walker Point between Little Patonga & Patonga Beach.

**ONE  
DESIGN &  
Sportsboat  
REGATTAS**

**2019 - 2020**

**6 x Windward/Leeward Races Per Event**

<b>Spring Regatta, inc Fareast 28 R Australian Championship</b>	2-3 November 2019
<b>Summer "Pittwater" Regatta</b>	15-16 February 2020
<b>Winter "Mick Hole" Regatta</b>	18-19 July 2020

**ENTER AT:**  
<http://www.rpayc.com.au/sailing/yacht-racing/regatta-and-championships>



# The Alfred's Boatyard

MODERN PROFESSIONAL CUSTOMER ORIENTATED



EXPERIENCE  
★★★★★  
SERVICE & QUALITY  
at  
The Alfred's Boatyard

*'I have used the services of many boatyards over the last 45 years and none come close to the exceptional service and support that I am now receiving annually from the RPAYC. It's simply the best.'*



**Proudly assisted by the following onsite contractors:**

Lacey Marine Engineering  
Douglas Marine  
Stewart Shipwright Service  
Northshore Marine

Andersen Marine  
Riggtech  
Ocean Covers  
Bosuns Locker

Sydney Marine Brokerage  
Ensign Ship Brokers  
Sydney Marine Group

[boatyard@rpayc.com.au](mailto:boatyard@rpayc.com.au) | 9998 3751 | [rpayc.com.au](http://rpayc.com.au)







## APPENDIX A – WEDNESDAY SERIES SPECIFIC SAILING INSTRUCTIONS

### A1 ADDITIONAL RULES

A1.1 Wednesday races are Non-Spinnaker (NS) races as per NoR / SI 19.

### A2 SCHEDULE OF RACES

Date	Race	Wednesday Series
04/09/2019	1	Club Marine Wednesday Spring Series
11/09/2019	2	Club Marine Wednesday Spring Series
18/09/2019	3	Club Marine Wednesday Spring Series
25/09/2019	4	Club Marine Wednesday Spring Series
02/10/2019	5	Club Marine Wednesday Spring Series
09/10/2019	6	Club Marine Wednesday Spring Series
16/10/2019	7	Club Marine Wednesday Spring Series
23/10/2019	8	Club Marine Wednesday Spring Series
30/10/2019	9	Club Marine Wednesday Spring Series
06/11/2019	10	Club Marine Wednesday Spring Series
13/11/2019	11	Club Marine Wednesday Spring Series
20/11/2019	12	Club Marine Wednesday Spring Series
27/11/2019	13	Club Marine Wednesday Spring Series
04/12/2019	14	Club Marine Wednesday Spring Series
11/12/2019	15	Club Marine Wednesday Spring Series
18/12/2019	16	Club Marine Wednesday Spring Series
15/01/2020	1	Club Marine Wednesday Summer Series
22/01/2020	2	Club Marine Wednesday Summer Series
29/01/2020	3	Club Marine Wednesday Summer Series
05/02/2020	4	Club Marine Wednesday Summer Series
12/02/2020	5	Club Marine Wednesday Summer Series
19/02/2020	6	Club Marine Wednesday Summer Series
26/02/2020	7	Club Marine Wednesday Summer Series
04/03/2020	8	Club Marine Wednesday Summer Series



11/03/2020	9	Club Marine Wednesday Summer Series
18/03/2020	10	Club Marine Wednesday Summer Series
25/03/2020	11	Club Marine Wednesday Summer Series
01/04/2020	1	Wednesday Autumn Series
08/04/2020	2	Wednesday Autumn Series
15/04/2020	3	Wednesday Autumn Series
22/04/2020	4	Wednesday Autumn Series
29/04/2020	5	Wednesday Autumn Series
06/05/2020	6	Wednesday Autumn Series
13/05/2020	7	Wednesday Autumn Series
20/05/2020	8	Wednesday Autumn Series
27/05/2020	9	Wednesday Autumn Series
03/06/2020	1	Waterford Trophy Series
10/06/2020	2	Waterford Trophy Series
17/06/2020	3	Waterford Trophy Series
24/06/2020	4	Waterford Trophy Series
01/07/2020	5	Waterford Trophy Series
08/07/2020	6	Waterford Trophy Series
15/07/2020	7	Waterford Trophy Series
22/07/2020	8	Waterford Trophy Series
29/07/2020	9	Waterford Trophy Series
05/08/2020	10	Waterford Trophy Series
12/08/2020	11	Waterford Trophy Series
19/08/2020	12	Waterford Trophy Series
26/08/2020	13	Waterford Trophy Series



### A3 DIVISION FLAGS

---

A3.1 There may be up to five (5) divisions. Division flags shall be as follows;

Division	Flag Displayed
Division 1	Numeral Pennant 1
Division 2	Numeral Pennant 2
Restricted Division	Code Flag R
Division 3	Numeral Pennant 3
Division 4	Numeral Pennant 4

### A4 STARTING AND FINISHING AREAS

---

A4.1 The starting area may be the area of water south of Longnose Point.

A4.2 The finishing area may be in the vicinity of the starting area.

### A5 STARTING TIMES

---

A5.1 The scheduled starting times are:

Division	Scheduled Start Times
Division 1	1400hrs
Division 2	1405hrs
Restricted Division	1410hrs
Division 3	1415hrs
Division 4	1420hrs

### A6 TIME LIMIT

---

A6.1 During the months of September, October, November, December, January, February, March and April the time limit shall be either three (3hrs) hours from the starting time of each division or official sunset Sydney time, whichever occurs earlier.

A6.2 During the months of May, June, July and August the time limit shall be either two and a half (2.5hrs) hours from the starting time of each division or official sunset Sydney time (AEST), whichever occurs earlier.



## A7 SCORING

- A7.1 The Wednesday Spring Pointscore Series shall consist of up to sixteen (16) races.
- A7.2 The Wednesday Summer Pointscore Series shall consist of up to eleven (11) races.
- A7.3 The Wednesday Autumn Pointscore Series shall consist of up to nine (9) races.
- A7.4 The Wednesday Waterford Trophy Pointscore Series shall consist of up to thirteen (13) races.



RPAYC  
**SAIL TRAINING**  
[www.rpayc.com.au/courses](http://www.rpayc.com.au/courses)

*Kids Learn to Sail Weekends &  
Holiday Programs*

*Optimist & Laser  
Green / Intermediate Fleet Training*

*Youth Learn to Sail & Development*

*Adult Learn to Sail*

*Let's Go Racing!*

TACKERS

RPAYC  
TRAINING



# APPENDIX B - THURSDAY TWILIGHT SERIES SPECIFIC SAILING INSTRUCTIONS



## B1 ADDITIONAL RULES

- B1.1 Thursday Twilight races are Spinnaker and Non-Spinnaker (NS) races. Non-Spinnaker races are per NoR / SI 19.
- B1.2 A boat shall declare in their entry whether they will be racing spinnaker or non-spinnaker for all races in the series. In the event that the boat does not indicate whether they will be racing spinnaker or non-spinnaker, their entry shall default to spinnaker and the applicable handicap will apply.

## B2 SCHEDULE OF RACES

Date	Race	Thursday Series	Time Limit
17/10/2019		Twilight Non-Pointscore	19:09
24/10/2019	1	Spring Twilight	19:15
31/10/2019	2	Spring Twilight	19:21
07/11/2019	3	Spring Twilight	19:28
14/11/2019	4	Spring Twilight	19:34
21/11/2019	5	Spring Twilight	19:41
28/11/2019	6	Spring Twilight	19:48
05/12/2019	7	Spring Twilight	19:54
12/12/2019	8	Spring Twilight	19:59
19/12/2019	9	Spring Twilight	20:04
16/01/2020	1	Summer Twilight	20:08
23/01/2020	2	Summer Twilight	20:06
30/01/2020	3	Summer Twilight	20:02
06/02/2020	4	Summer Twilight	19:57
13/02/2020	5	Summer Twilight	19:50
20/02/2020	6	Summer Twilight	19:43
27/02/2020	7	Summer Twilight	19:35
05/03/2020	8	Summer Twilight	19:26
12/03/2020	9	Summer Twilight	19:17
19/03/2020	10	Summer Twilight	19:07



## B3 DIVISION FLAGS

---

B3.1 There may be up to four (4) divisions. Division flags shall be as follows:

Division	Flag Displayed
Division 1	Numeral Pennant 1
Division 2	Numeral Pennant 2
Division 3	Numeral Pennant 3
Division 4	Numeral Pennant 4

## B4 STARTING AND FINISHING AREAS

---

B4.1 The starting area may be the area of water extending from Bayview in the south to an imaginary line north of Scotland Island.

B4.2 The finishing area may be in the vicinity of the starting area.

## B5 STARTING TIMES

---

B5.1 The scheduled start times are:

Division	Scheduled Starting Times
Division 1	1755hrs
Division 2	1800hrs
Division 3	1805hrs
Division 4	1810hrs

## B6 TIME LIMIT

---

B6.1 The time limit shall be official sunset for Sydney (AEDT) as noted in the schedule of races (B2).

## B7 SCORING

---

B7.1 The Thursday Twilight Spring Pointscore Series shall consist of up to nine (9) races.

B7.2 The Thursday Twilight Summer Pointscore Series shall consist of up to ten (10) races.

B7.3 Remaining Twilight Races. All remaining races not forming part of any Twilight Pointscore Series shall be sailed as non-pointscore races.



# APPENDIX C - WOMEN'S TWILIGHT SERIES SPECIFIC SAILING INSTRUCTIONS



## C1 ADDITIONAL RULES

- C1.1 Thursday Twilight races are Spinnaker and Non-Spinnaker (NS) races. Non-Spinnaker races are per NoR / SI 19.
- C1.2 Boats shall be crewed by women, except that:
- (a) One (1) male crew may be on board; and
  - (b) For boats 40' or bigger (LH), an additional male crew may be on board. Boats electing to carry two male crew may have a 2% performance penalty applied to their handicap. The PIC shall inform the Sailing Office no later than one (1) hour prior to the start of racing for each scheduled race.
- C1.3 Male crew shall not helm the boat whilst racing.

## C2 SCHEDULE OF RACES

Date	Race	Scheduled Starting Time	Time Limit
29/10/2019	1	1755hrs	19:19
12/11/2019	2	1755hrs	19:32
26/11/2019	3	1755hrs	19:46
10/12/2019	4	1755hrs	19:58
14/01/2020	5	1755hrs	20:09
28/01/2020	6	1755hrs	20:03
11/02/2020	7	1755hrs	19:52
25/02/2020	8	1755hrs	19:37
10/03/2020	9	1755hrs	19:19
24/03/2020	10	1755hrs	19:00

## C3 DIVISION FLAGS

- C3.1 There may be up to two (2) divisions. Division flags shall be as follows:

Division	Flag Displayed
Division 1	Numeral Pennant 1
Division 2	Numeral Pennant 2



## C4 STARTING AND FINISHING AREAS

---

- C4.1 The starting area may be the area of water extending from Bayview in the South to an imaginary line north of Scotland Island.
- C4.2 The finishing area may be in the vicinity of the starting area.

## C5 STARTING TIMES

---

- C5.1 The scheduled starting times are:

Division	Scheduled Starting Times
Division 1	1755hrs
Division 2	1800hrs

## C6 TIME LIMIT

---

- C6.1 The time limit shall be official sunset for Sydney (AEDT) as noted in the schedule of races (C2).

## C7 SCORING

---

- C7.1 The Women's Twilight Pointscore Series shall consist of up to ten (10) races.





# APPENDIX D - ESTUARY & SHORT OFFSHORE SERIES SPECIFIC SAILING INSTRUCTIONS



## D1 ADDITIONAL RULES

- D1.1 Boats allocated to Division SOPs intending to start shall make contact with Committee Vessel on VHF Channel 77 identifying their sail number and the number of persons on board (POB) prior to the warning signal. A boat failing to comply shall be ineligible to start and scored Did Not Start (DNS).
- D1.2 All boats shall maintain a listening watch on VHF Channel 16 and 77 for the duration of the race.
- D1.3 Etchells/Int 5.5m/Sportsboat competitors shall wear a lifejacket at all times for each scheduled race, as per NoR / SI 4.3.
- D1.4 Short Offshore Series: Where conditions do not allow for a mark to be laid, the GPS location of such marks may substitute the mark of the course. It is the responsibility of the PIC to prove they have sailed the course.

## D2 SCHEDULE OF RACES

Date	SOPs Division	Estuary Division 1,2,3
14/09/2019	SOPs Race 1	Estuary Race 1
12/10/2019	SOPs Race 2	Estuary Race 2
02/11/2019	SOPs Race 3	Estuary Race 3
16/11/2019	SOPs Race 4	Estuary Race 4
07/12/2019	SOPs Race 5	Estuary Race 5
18/01/2020	SOPs Race 6	Estuary Race 6
08/02/2020	SOPs Race 7	Estuary Race 7
14/03/2020	SOPs Race 8	Estuary Race 8

## D3 DIVISION FLAGS

- D3.1 There may be up to four (4) divisions. Division flags shall be as follows

Division	Flag Displayed
SOPs	Code Flag W
Estuary Division 1	Numeral Pennant 1
Estuary Division 2	Numeral Pennant 2
Estuary Division 3	Numeral Pennant 3



## D4 STARTING AND FINISHING AREAS

---

- D4.1 The Starting Area for SOPs is in the vicinity of West Head, Lion Island or Barrenjoey Head unless advised by the Race Committee.
- D4.2 Estuary Division 1, 2 and 3 – Start in the vicinity of Longnose Point unless advised by the Race Committee. The finishing area is in the vicinity of Mackerel Beach unless advised by the Race Committee.

## D5 STARTING TIMES

---

- D5.1 The scheduled starting times are:

Division	Scheduled Starting Times
SOPS	1230hrs
Estuary Division 1	1315hrs
Estuary Division 2	1320hrs
Estuary Division 3	1325hrs

## D6 TIME LIMIT

---

- D6.1 The time limit shall be 1730hrs or 90 minutes from the first boat finishing, whichever is later.
- D6.2 Any boat still racing at 1700hrs shall make contact with the Committee Vessel on VHF Channel 77 and make them aware of their position and estimated time of finish or return to Pittwater.

## D7 SHORTENING COURSE / CHANGING THE NEXT LEG

---

- D7.1 The Race Committee may call competitors on VHF Channel 77 and request their position and progress on the course.
- D7.2 In addition to NoR / SI 16, the Race Committee may shorten the course by making an announcement on VHF Channel 77 indicating the last mark of the course to be rounded, after which boats shall proceed directly to the finish. This further amends RRS 32 and Race Signals.
- D7.3 The Race Committee may also change the next leg of course by making an announcement on VHF Channel 77. No flag or visual signal needs to be displayed. This amends RRS 33 and Race Signals.

## D8 SCORING

---

- D8.1 The SOPS series shall consist of up to eight (8) races.
- D8.2 The Estuary series shall consist of up to eight (8) races.



# APPENDIX E - PITTWATER INSHORE SERIES SPECIFIC SAILING INSTRUCTIONS



## E1 ADDITIONAL RULES

- E1.1 Pittwater Inshore races are primarily Spinnaker races. Boats electing to sail Non-Spinnaker (NS) by notifying the sailing Office, shall do so in accordance with NoR / SI 19.

## E2 SCHEDULE OF RACES

Date	Race	Pittwater Series
28/09/2019	1	Pittwater Inshore Series
19/10/2019	2	Pittwater Inshore Series
26/10/2019	3	Pittwater Inshore Series
09/11/2019	4	Pittwater Inshore Series
30/11/2019	5	Pittwater Inshore Series
14/12/2019	6	Pittwater Inshore Series + Trophy Day 1
01/02/2020	7	Pittwater Inshore Series + Trophy Day 2
22/02/2020	8	Pittwater Inshore Series
21/03/2020	9	Pittwater Inshore Series
04/04/2020	10	Pittwater Inshore Series + Trophy Day 3

## E3 DIVISION FLAGS

- E3.1 There may be up to four (4) divisions. Division flags shall be as follows:

Division	Flag Displayed
Division 1	Numeral Pennant 1
Division 2	Numeral Pennant 2
Division 3	Numeral Pennant 3
Restricted Division	Code Flag R

## E4 STARTING AND FINISHING AREAS

- E4.1 The starting area may be the area of water extending from Bayview in the South to an imaginary line extending east from Longnose Point in the North.
- E4.2 The finishing area may be in the vicinity of the starting area.



## E5 STARTING TIMES

---

E5.1 The scheduled starting times are:

Division	Scheduled Starting Times
Division 1	1330hrs
Division 2	1335hrs
Division 3	1340hrs
Restricted Division	1345hrs

## E6 TIME LIMIT

---

E6.1 The time limit shall be 1730hrs.

## E7 SCORING

---

E7.1 The Pittwater Inshore Pointscore Series shall consist of up to ten (10) races.





# APPENDIX F – ONE DESIGN & SPORTS BOAT SPRINT SERIES SPECIFIC SAILING INSTRUCTIONS

## F1 ADDITIONAL RULES

- F1.1 Eligible boats include Etchells, Elliott 7s, Dragons, J70s, Melges, Stars, Int 5.5m, Fareast 28, 11m, Vipers and other Sports Boats.  
 Entries shall confirm their participation by email at least 48hrs prior to the first scheduled race of each round. Email: sailing@rpayc.com.au
- F1.2 A maximum of three (3) races are to be sailed on each scheduled day of racing.
- F1.3 The Race Committee may orally advise boats to start in another series, class or division when it determines there are insufficient boats intending to start.
- F1.4 Other classes or divisions may be added to the series at any stage and shall be allocated an appropriate class flag.
- F1.5 Race communications made shall be broadcasted on VHF Channel 72.

## F2 SCHEDULE OF RACES

Date	Rounds
14/09/2019	OD & Sports Boat Sprints Round 1
12/10/2019	OD & Sports Boat Sprints Round 2
02/11/2019	OD & Sports Boat Sprints Round 3 (Spring Regatta)
16/11/2019	OD & Sports Boat Sprints Round 4
07/12/2019	OD & Sports Boat Sprints Round 5
18/01/2020	OD & Sports Boat Sprints Round 6
15/02/2020	OD & Sports Boat Sprints Round 7 (Summer Regatta)
14/03/2020	OD & Sports Boat Sprints Round 8

## F3 DIVISION FLAGS

F3.1 Class or Division flags shall be as follows:

Division	Flag Displayed
Division 1	Flag "E"
Division 2	Flag "T"
Division 3	Flag "J"
Division 4	Flag "R"



## F4 STARTING AND FINISHING AREAS

---

- F4.1 The starting area may be the area of water extending from Bayview in the South to an imaginary line extending east from Longnose Point in the North.
- F4.2 The finishing area may be in the vicinity of the starting area.
- F4.3 NoR / SI 12.1 and 13 do not apply. The starting line and finishing line shall be between the staff on the Race Committee Vessel displaying an orange flag and the course side of a chequered black and white Inflatable mark on the other end of the line.

## F5 STARTING TIMES

---

- F5.1 The scheduled starting times are:

Division	Scheduled Starting Times (first race of the day)
Division 1	1200hrs
Division 2	1205hrs
Division 3	1210hrs
Division 4	1215hrs

- F5.2 Subsequent races for the day shall commence as soon as practical and may not be in the same starting order.

## F6 TIME LIMIT

---

- F6.1 A boat failing to finish within 20 minutes after the first boat in its class or division shall be scored Did Not Finish (DNF).
- F6.2 On each scheduled race day, no warning signal shall be made after 1600hrs.

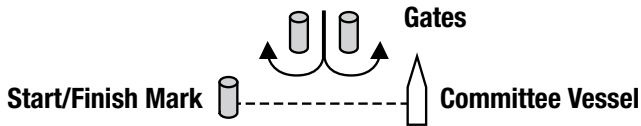
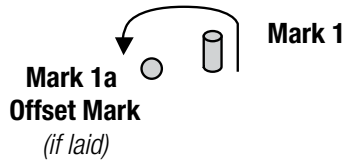
## F7 COURSES & MARKS

---

- F7.1 The course is intended to be a windward / leeward course.
- F7.2 The number of roundings of the windward mark shall be displayed at or before the Warning Signal from the Race Committee Vessel.
- F7.3 Mark 1 shall be laid to windward of the starting line.
- F7.4 Mark 1 and Gate Marks shall be yellow inflatable cylindrical marks.
- F7.5 Mark 1a the offset mark, if laid, shall be a red inflatable cylindrical mark, to port of Mark 1 and shall be rounded to port after rounding Mark 1 to port.



- F7.6 Gate marks shall be laid approximately 50 metres to windward of the starting line. The gate marks may be laid after the starting signal.
- F7.7 If only one gate mark is set, boats shall round the single mark to port.
- F7.8 The change of course mark shall be a pink inflatable cylindrical mark.
- F7.9 To change the next leg of the course, the race committee shall lay a new change of course mark (or move the finishing line) and remove the original mark as soon as practicable. In the event that the position of Mark 1 is changed, Marks 1 and 1a shall be replaced by a new single Mark 1 and boats shall round the new Mark 1 and proceed directly to the Gate, or to the Finishing Line, as appropriate. When, in a subsequent change a new mark is replaced, it shall be replaced by an original mark.



- F7.10 Should sea and weather conditions deem it necessary, a course may also be selected from the List of Courses. Changes shall be announced on VHF Channel 72 prior to the start.

## F8 SCORING

- F8.1 The OD & Sports boat Sprint Series shall consist of up to twenty-four (24) races.



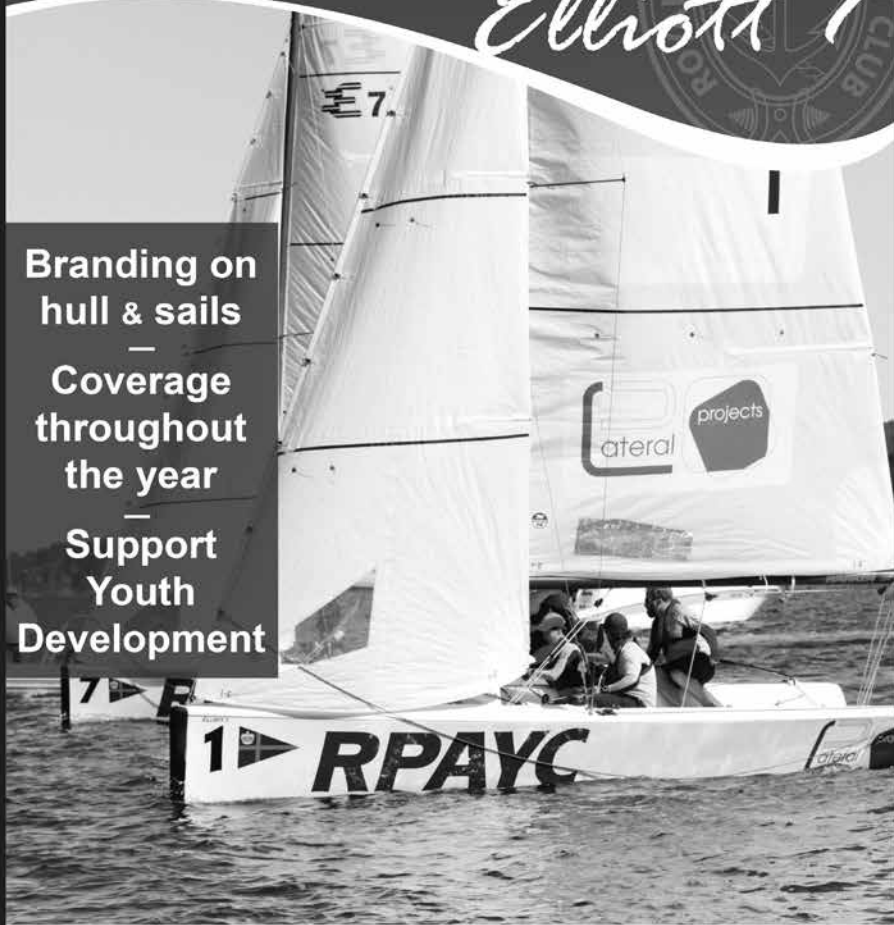
The Royal Prince Alfred Yacht Club

# You're invited to Sponsor an *Elliott 7*

Branding on  
hull & sails

—  
Coverage  
throughout  
the year

—  
Support  
Youth  
Development



Contact the Sailing Office for T+C's: 9998 3700 or [marketing@rpayc.com.au](mailto:marketing@rpayc.com.au)



# APPENDIX G - RPYC COMMODORES CUP SERIES SPECIFIC SAILING INSTRUCTIONS



The Commodores Cup is the club championship and is based on races taken from the Club series throughout the Summer. The Notice of Race and Sailing Instructions are those of the individual events or series unless changed by this Appendix G.

## G1 ENTRY & ELIGIBILITY

- G1.1 Boats shall enter the Commodore's Cup by completing the Commodores Cup entry form.
- G1.2 The entry fee is \$50, which will go to the Youth Competition Support Fund.
- G1.3 Entry deadline is 7th September 2019.
- G1.4 Only members of the RPYC are eligible to win the Commodores Cup Series.

## G2 SERIES OF RACES

- G2.1 The series will consist of;

Date	Rounds
07/09/2019	The Pittwater Dash
26/10/2019	Inshore Race 3
14/12/2019	Inshore Race 6
08/02/2020	Estuary/SOPs Race 7
28/03/2020	Friends of David Booth Race

- G2.2 Plus the 2 best results from Thursday Twilight Spring or Summer series.

## G3 DIVISIONS

- G3.1 Entries shall be split into appropriate divisions as decided by the Race Committee.

## G4 SCORING

- G4.1 The Commodores Cup Pointscore Series shall consist of seven (7) races.
- G4.2 A boats series score shall be the total of her race scores.
- G4.3 When a race uses different divisions or a pursuit race format; a boats scores may be re-calculated using the RPYC division splits or be ranked by finishing order against other boats in her RPYC division as appropriate.

## G5 PRIZES & TROPHIES

- G5.1 Trophies may be awarded to the Club Champion for each Division.





Lease an  
**Elliott 7**  
for Training *& or*  
Racing!

Club Races  
or Club Regattas

Series or Casual  
Entry

Contact the Sailing Office  
for Pricing & Conditions

Contact the Sailing Office for T+C's: 9998 3771 OR [sailing@rpayc.com.au](mailto:sailing@rpayc.com.au)



# APPENDIX H - LION ISLAND SERIES SPECIFIC SAILING INSTRUCTIONS



## H1 ADDITIONAL RULES

- H1.1 Division 4 races are Non-Spinnaker (NS) races. Non-Spinnaker races are per NoR / SI 19.
- H1.2 Etchells/Int 5.5m/Sportsboat competitors shall wear a lifejacket at all times for each scheduled race, as per NoR / SI 4.3.

## H2 SCHEDULE OF RACES

Date	Race	Lion Island Series
09/05/2020	1	Lion Island Series
16/05/2020	2	Lion Island Series
23/05/2020	3	Lion Island Series
30/05/2020	4	Lion Island Series

## H3 DIVISION FLAGS

- H3.1 There may be up to four (4) divisions. Division flags shall be as follows:

Division	Flag Displayed
Division 1	Numeral Pennant 1
Division 2	Numeral Pennant 2
Division 3	Numeral Pennant 3
Division 4 – Non Spinnaker	Numeral Pennant 4

## H4 STARTING AND FINISHING AREAS

- H4.1 The starting area may be the area of water extending from Bayview in the South to an imaginary line extending east from Longnose Point in the North.
- H4.2 The finishing area may be in the vicinity of the starting area.



## H5 STARTING TIMES

---

H5.1 The scheduled starting times are:

Division	Scheduled Starting Times
Division 1	1200hrs
Division 2	1205hrs
Division 3	1210hrs
Division 4	1215hrs

## H6 TIME LIMIT

---

H6.1 The time limit shall be three and a half (3.5) hours from the starting time of each division or official Sydney sunset (AEST), whichever occurs earlier.

## H7 SCORING

---

H7.1 The Lion Island Series shall consist of up to four (4) races.



# APPENDIX I - WINTER AND EARLY BIRD SERIES SPECIFIC SAILING INSTRUCTIONS



## 11 ADDITIONAL RULES

- 11.1 Winter and Early Bird Series races shall be conducted as pursuit races with handicaps conceded at the start (refer NoR / SI 9.10 and 20.11). Starting handicaps for each race shall be available from the Sailing Office at 0930hrs on the day of each race.
- 11.2 Division 4 races are Non-Spinnaker (NS) races. Non-Spinnaker races are per NoR / SI 19.
- 11.3 Boats may nominate a female helm in their entry registration. If so, boats shall have a female helm for the races in the series that are identified as part of the Women's Helm Series.

## 12 SCHEDULE OF RACES

Date	Race	Series
13/06/2020	1	Winter Series & Women's Helm Series
20/06/2020	2	Winter Series
27/06/2020	3	Winter Series
04/07/2020	4	Winter Series
11/07/2020	5	Winter Series & Women's Helm Series
18/07/2020	6	Winter Series
25/07/2020	1	Early Bird
01/08/2020	2	Early Bird
08/08/2020	3	Early Bird & Women's Helm Series
15/08/2020	4	Early Bird
22/08/2020	5	Early Bird
29/08/2020	6	Early Bird

## 13 DIVISION FLAGS

- 13.1 There may be up to four (4) divisions. The division flag shall be Flag "R".



## 14 STARTING AND FINISHING AREAS

---

- 14.1 The starting area may be the area of water extending from Bayview in the South to an imaginary line extending east from Longnose Point in the North.
- 14.2 The finishing area may be in the vicinity of the starting area.

## 15 STARTING TIMES

---

- 15.1 The scheduled starting time for all races is 1200hrs.
- 15.2 A boat shall not start before the display of their allocated handicap time.
- 15.3 Races shall be started using the following procedure:

Signal / Display	Flag
Warning	Flag R displayed - 1 Sound
Preparatory	Flag P displayed - 1 Sound
1 Minute	Flag P removed - 1 Sound
00:00:00	Flag R removed - 1 Sound - "0" handicap start
00:01:00	"1" handicap start.
00:02:00	"2" handicap start and so on.

## 16 TIME LIMIT

---

- 16.1 The time limit shall be three and a half (3 ½) hours from the start of the race or official Sydney sunset (AEST), whichever occurs earlier.

## 17 SCORING

---

- 17.1 The Winter Pointscore Series shall consist of up to six (6) races.
- 17.2 The Early Bird Pointscore Series shall consist of up to six (6) races.
- 17.3 The Women's Helm Pointscore Series shall consist of up to (3) races.



# APPENDIX J - TWO HANDED SERIES & WOMEN'S WINTER SERIES SPECIFIC SAILING INSTRUCTIONS



## J1 ADDITIONAL RULES

- J1.1 At times of heightened risk, lifejackets and harnesses shall be worn by both crew members in the Two Handed division. Harness tethers shall be attached to clipping points or a jackstay when any crew member is on a working deck.
- J1.2 For the Women's Winter Series boats shall be crewed by women, except that:
- (a) One (1) male crew may be on board; and
  - (b) For boats 40' or bigger (LH), an additional male crew may be on board. Boats electing to carry two male crew may have a 2% performance penalty applied to their handicap. The PIC shall inform the Sailing Office no later than one (1) hour prior to the start of racing for each scheduled race.
  - (c) Male crew shall not helm the boat whilst racing.

## J2 SCHEDULE OF RACES

Date	Race	Series
03/05/2020	1	Two Handed & Women's Winter Series
14/06/2020	2	Two Handed & Women's Winter Series
05/07/2020	3	Two Handed & Women's Winter Series
02/08/2020	4	Two Handed & Women's Winter Series

## J3 DIVISION FLAGS

- J3.1 The division flag for the Two Handed and Women's Winter Series shall be Flag "R".

## J4 STARTING AND FINISHING AREAS

- J4.1 The starting area may be the area of water extending from Bayview in the South to an imaginary line extending east from Longnose Point in the North.
- J4.2 The finishing area may be in the vicinity of the starting area.



## **J5 STARTING TIMES**

---

J5.1 The scheduled starting time for the Two Handed and Women's Winter Series shall be 1000hrs.

## **J6 TIME LIMIT**

---

J6.1 The time limit shall be 1400hrs.

## **J7 SCORING**

---

J7.1 The Two Handed and Women's Winter Series shall consist of up to four (4) races.





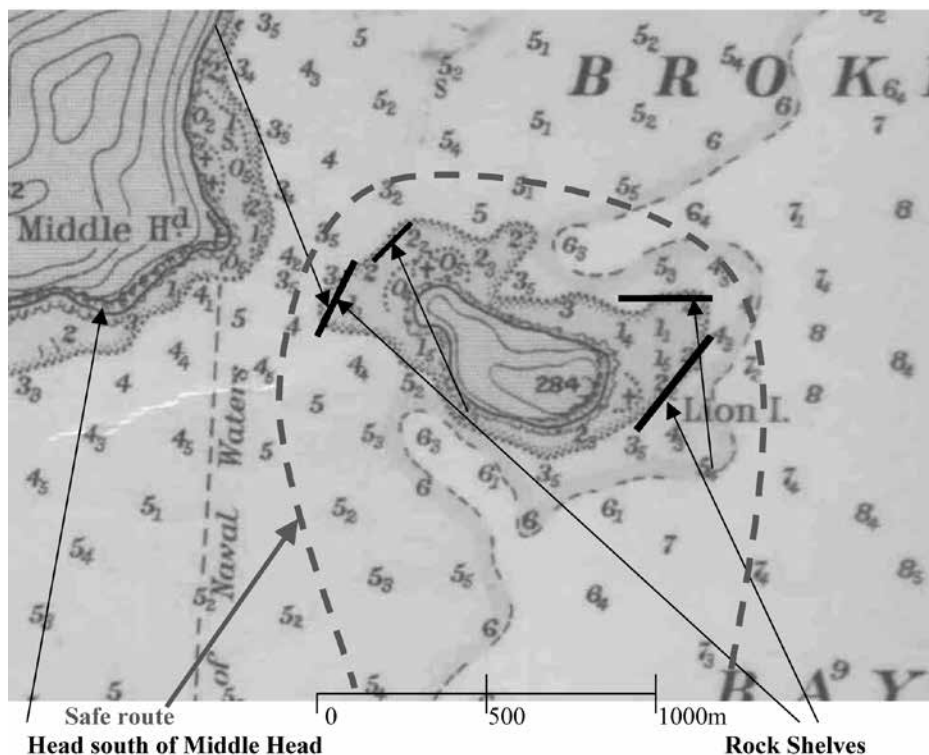


## NAVIGATING LION ISLAND – FOR INFORMATION ONLY

Special attention should be given when navigating Lion Island and its surrounds. The effects of swell, breaking seas and the possibility of uncharted rocks must be carefully considered.

There are at least four potential hazards when rounding the island. Remember at low tides the risk of these hazards may be increased. Crews are reminded to keep an active watch.

### Possible location of “Pinnacle Rock”



### 1952 Chart of Broken Bay, AUS 133 cropped to show Lion Island and modified by Brian Gray to show the location of some navigation hazards

Yachtsmen should navigate with caution especially when passing the northeastern corner of Lion Island and again when passing the western side of the Island. The recommended safe course is shown as a dashed line.



## Passing the Eastern Side of the Island

Yachts should stand off the island by a distance which is equivalent almost to the length of the Island and then sail past the Island for a distance which is at least the width of the Island before turning to run down the northern side.

## Passing the Western Side of the Island

When turning to round the western side yachts should leave at least 50% of the distance between the northwest corner of the island and Middle Head as clearance and then turn to sail to Pittwater only when they have sailed well past the line between the headland south of Middle Head and the southern side of the island.

**Tides** are very important as the **low water** clearance at the rock shelves on both sides of the island is about 2m less the height of any rocks or outcrops on the rock shelves. Also waves and swell can increase the risk of hitting the rock shelves.

**Tides and swell** conditions should be checked before attempting to round the Island.



# CHART OF PITTWATER

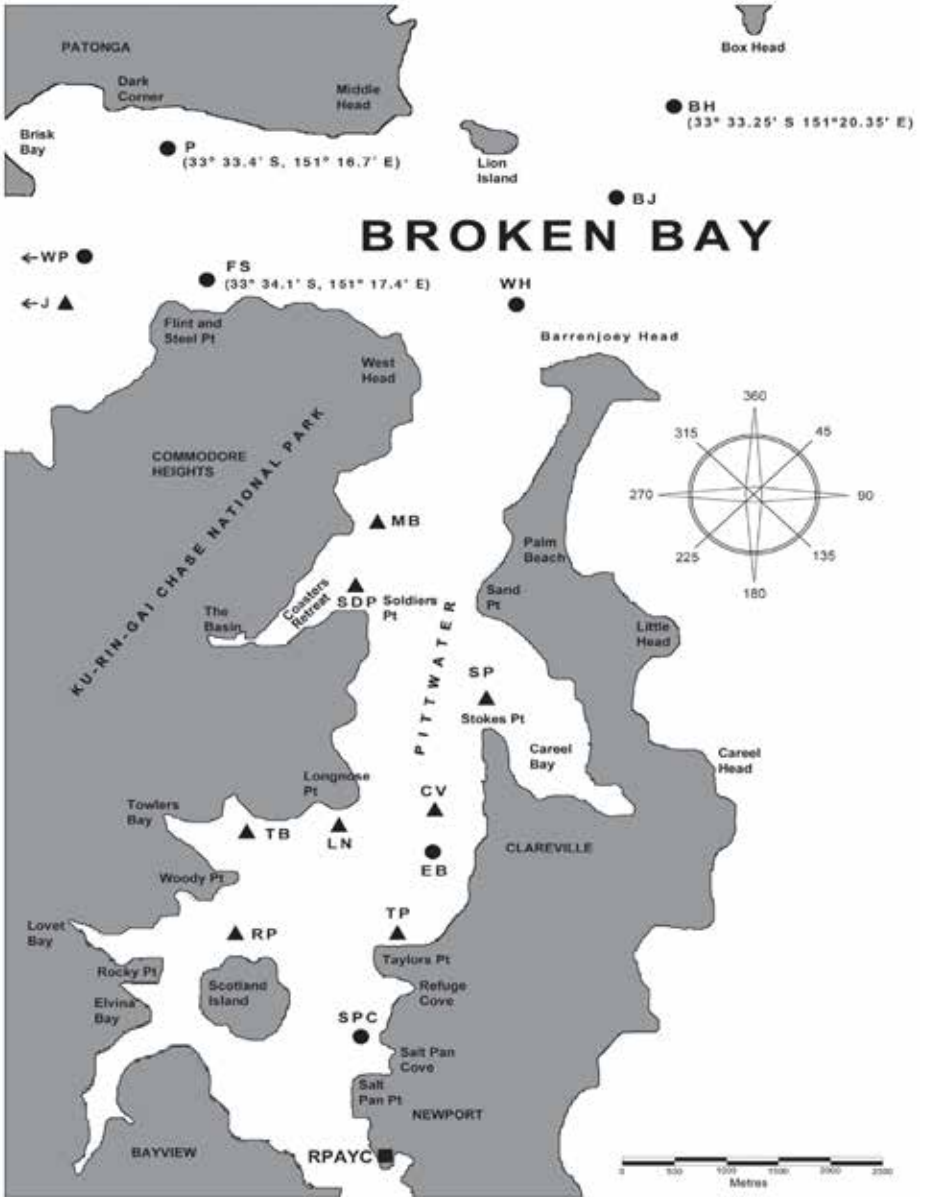


CHART OF PITTWATER



The Royal Prince Alfred Yacht Club

# PORTUGUESE CLUB PICNIC



2019/2020  
Season



All Welcome  
Social  
Fun  
Families



31.05.2020

28.06.2020

26.07.2020

30.08.2020

The Commodore invites all Members and guests to enjoy a Sunday BBQ at Portuguese Beach. Casual yacht and or dinghy sail from 10am or just cruise at your own pace.

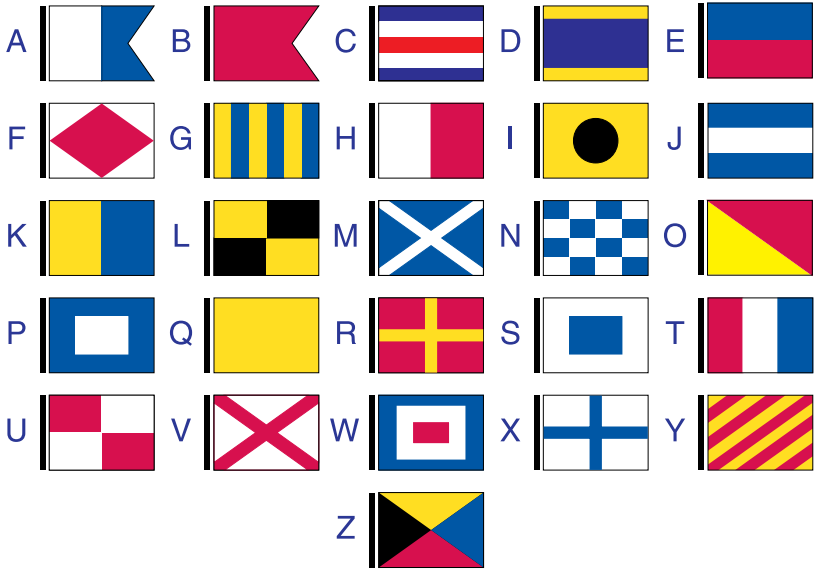
After the sail enjoy a BYO BBQ on the beach.

The Club supplies a tender service from your anchored boat to the beach and BBQ Facilities.

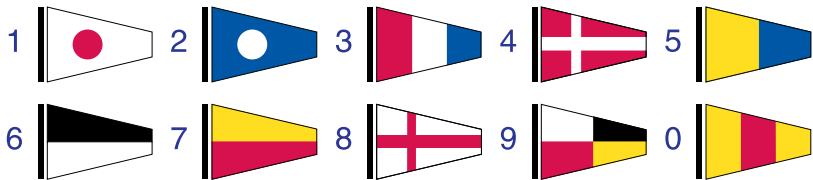
reception@rpayc.com.au 9998 3700 www.rpayc.com.au



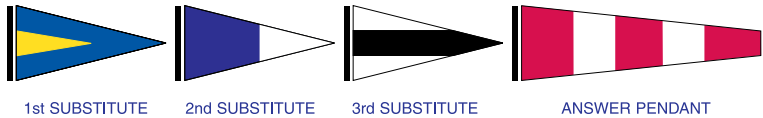
### INTERNATIONAL CODE FLAGS



### NUMERAL PENDANTS



### SUBSTITUTES



### NAVAL NUMERAL FLAGS



# MORE THAN JUST INSURANCE. BE REWARDED WITH CLUB MARINE.



When you join Club Marine you'll discover that boat insurance is just the beginning. Club Marine have been providing outstanding claims service to boaties of all kinds for more than 50 years and offer broad, flexible and affordable policy options to give you the cover you need. With Club Marine, you can have fun on the water knowing you're covered.

## ALL CLUB MARINE MEMBERS HAVE ACCESS TO:



### Club Marine Assist

Have peace of mind on and off the water 24/7



### Club Marine Member Rewards

Get discounts and benefits at favourite marine retailers



### Club Marine Magazine

Enjoy Australasia's premier lifestyle marine publication



### Club Marine App

Access the right boating information anywhere, anytime



### Club Marine TV

Keep informed with expert boating and fishing tips from industry experts

## GET A QUOTE TODAY

**P** 1300 00 CLUB (2582)

**W** CLUBMARINE.COM.AU



Insurance is underwritten by Allianz Australia Insurance Limited (Allianz) ABN 15 000 122 850 AFSL No. 234708 of 2 Market Street, Sydney.  
Club Marine Limited (Club Marine) ABN 12 007 588 347 AFSL No. 236916 is a related body corporate and issues boat insurance as agent of Allianz.  
Club Marine Assist is provided by Club Marine Limited. Assistance services are provided by AWP Australia Pty Ltd trading as Allianz Worldwide Partners ABN 52 097 227 177. Terms of service are available on clubmarine.com.au.

*Boating's  
just better with  
Club Marine!*