



## Royal Prince Alfred Yacht Club Cruise'n Race Sailing Instructions

**The event** will be a pursuit (handicap start) race.

The race will start at 1000hrs (for the limit boats) at the RMYC Port Pile (or elsewhere as specified by RPAYC Race Committee).

The race will be conducted by the race management of RPAYC Race Committee.

Once the race has commenced, the Cruise Organiser will be responsible for recording times and awarding prizes afterwards.

**The course** will be from the start, around West Head and to the finish across an imaginary line between Challenger Point Port Beacon (approx. 33° 35.2' S 151° 15.0' E) and the Cardinal Beacon adjacent/beneath Eleanor Bluffs (approx. 33° 34.7 S 151° 14.8' E).

Each boat must contact "Alfreds Cruising" on Channel 77 to report your finish time or text your finish time to 0481 123 826.

Please record your time as well.

There may be course marks in Pittwater that boats will be required to round. These will be notified during the pre-race start procedure.

**Prize giving** will be on Hallets Beach once everyone is safely anchored and organized.

It is not compulsory to stay the night. In this way **anyone from the club** is encouraged to join in and enter the series or just one race.

**To compete** your yacht must possess at least a current category 7 certificate or cruising equivalent. Note, that this is no different for what you need to enter a club cruising event.

The process is well described on the club web site here: <https://www.rpayc.com.au/sailing/regulations-equipment-audits/preparing-for-an-equipment-audit>

The category 7 audit is the "entry level" safety audit and does not require a great deal more equipment than the standard RMS/Maritime safety gear, which is mandatory for all water users.

The actual category 7 form is here:

[https://www.rpayc.com.au/images/yachting/Special%20Regulations%20&%20Incidents/RPA%20New%20Equipment%20Audit%20Forms/RPAYC Cat 7 with NOR ev1 1.pdf](https://www.rpayc.com.au/images/yachting/Special%20Regulations%20&%20Incidents/RPA%20New%20Equipment%20Audit%20Forms/RPAYC%20Cat%207%20with%20NOR%20ev1%201.pdf)

**To enter the race or the series** you will need to fill in a "Cruise/Race Entry Form" on the club web site here: <https://www.rpayc.com.au/sailing/cruising/cruising-events>

You can nominate on the day if you want to carry "extras" (spinnaker, gennaker etc) and your handicap will be adjusted.

**The races are to be held** primarily on the mid-month cruise that is normally organized for the daylight savings months.

Currently the races are scheduled to be held on the following dates:

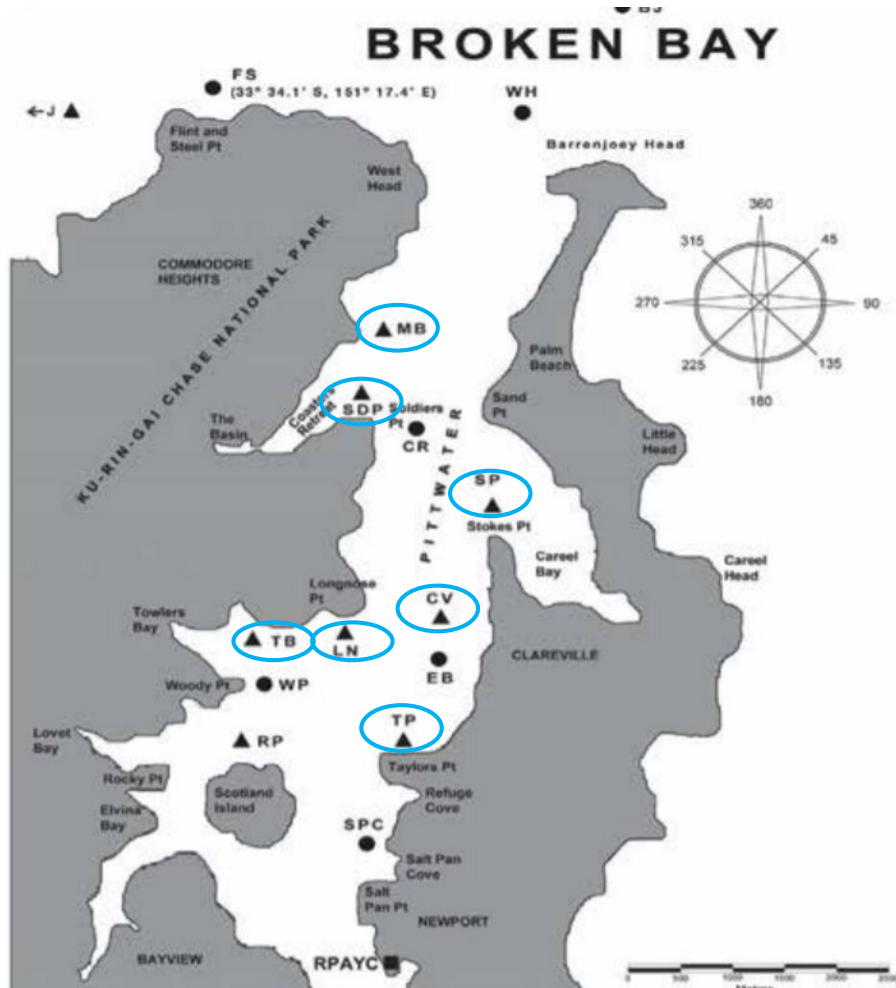
- 19<sup>th</sup> Sept 2020
- 24<sup>th</sup> Oct 2020
- 21<sup>st</sup> Nov 2020
- Dec – no race
- 23<sup>rd</sup> and 24<sup>th</sup> Jan 2021 – in conjunction with the Dicko Cup
- 20<sup>th</sup> Feb 2021

If you require any assistance with any aspect of the above please do not hesitate to contact the Cruise Committee.

### Approximate Start and Finish Lines



### Possible rounding mark locations



**Below are the approximate locations of the marks:**

CV Clareville/Avalon. Fixed Yacht Mark either an orange can or yellow pyramid situated northwest of Avalon Sailing Club, approximately at 33° 37.6' S, 151° 18.6' E.

LN Longnose Point. Fixed Yacht Mark either an orange can or yellow pyramid situated southwest of Longnose Point, approximately at 33° 37.4' S, 151° 18.0' E.

MB Mackerel Beach. Fixed Yacht Mark, an orange can situated between Currawong and Great Mackerel Beach, approximately 33° 35.7' S, 151° 18.3' E

RP Rocky Point. Fixed Yacht Mark, an orange can situated to the northeast of Rocky Point, approximately 33° 37.9' S, 151° 17.4' E.

SDP Soldiers Point. Fixed Yacht Mark, an orange can situated to the north of Soldiers Point, approximately 33° 36.0' S, 151° 18.3' E.

SP Stokes Point. Fixed Yacht Mark, an orange can situated approximately 200 metres northwest of Stokes Point, approximately 33° 36.7' S, 151° 18.8' E.

TB Towlers Bay. Fixed Yacht Mark, an orange can situated approximately 400 metres from the shoreline in Morning Bay (Towlers Bay), approximately 33° 37.5' S, 151° 17.6' E.

TP Taylors Point. Fixed Yacht Mark, orange can situated to the northwest of Taylors Point Wharf, approximately at 33° 37.9' S, 151° 18.3' E.