

# SECTION 12.0 - LION ISLAND POINTSCORE SERIES – SUPPLEMENTARY SAILING INSTRUCTIONS



## 1 RULES

- 1.1 Division 4 is classified as a Non-Spinnaker (NS) division as per Section 3 - General Notice of Race 19. Only a mainsail and a headsail as defined in RRS 50.4 shall be used.
- 1.2 At times of heightened risk, lifejackets must be worn by crew members.

## 2 RESPONSIBILITY

- 2.1 All those taking part in RPAYC races do so at their own risk and responsibility.
- 2.2 Attention is drawn to the Racing Rules of Sailing, Fundamental Rule 4, which states **“The responsibility for a boat’s decision to participate in a race or continue racing is hers alone”**.

## 3 SCHEDULE OF RACES

Date	Race	Lion Island Series	First Scheduled Start Time
05/05/2018	1	Lion Island Series	1200hrs
12/05/2018	2	Lion Island Series	1200hrs
19/05/2018	3	Lion Island Series	1200hrs
26/05/2018	4	Lion Island Series	1200hrs

## 4 DIVISION FLAGS

- 4.1 There shall be up to four (4) divisions. Divisional flags shall be as follows:

Divisions	Flag Displayed
Division 1	Numeral Pennant 1
Division 2	Numeral Pennant 2
Division 3	Numeral Pennant 3
Division 4 - Non Spinnaker	Numeral Pennant 4



## 5 THE START

---

- 5.1 The starting area may be the area of water extending from Bayview in the South to an imaginary line extending east from Longnose Point in the North.
- 5.2 The starting line will be between the signal mast on the Race Committee Signal Boat displaying an orange flag and the course side of an orange inflatable mark on the port end of the line.

## 6 STARTING TIMES

---

- 6.1 The scheduled start times are:

Division	Scheduled Start Times
Division 1	1200hrs
Division 2	1205hrs
Division 3	1210hrs
Division 4	1215hrs

## 7 THE FINISH

---

- 7.1 The finish line shall be between the signal mast on the Race Committee Signal Boat displaying an orange flag and an orange inflatable mark moored nearby.
- 7.2 The finishing area may be in the vicinity of the starting area.

## 8 SHORTENING COURSE

---

- 8.1 As per Section 3 - General Notice of Race 16.1.

## 9 TIME LIMIT

---

- 9.1 The time limit shall be three and a half (3.5) hours from the start time of each division or official Sydney sunset (AEDT), whichever occurs earlier.

## 10 SCORING

---

- 10.1 The Lion Island Pointscore Series shall consist of up to four (4) races.
- 10.2 A boat's series score will be the total of her race scores.



## 11 PRIZES

---

- 11.1 Prizes may be awarded for each race to the first, second and third place getters for each division in each race scheduled.
- 11.2 Series Pointscore prizes may be awarded for first, second and third place at the Annual Presentation.

## 12 COURSES

---

- 12.1 The courses to be sailed shall be selected from the entire list contained in RPAYC List of Courses 2017-2018.
- 12.2 The course shall be displayed from the Race Committee Signal Boat at or before the Warning Signal for each division.
- 12.3 All marks are to be rounded to starboard unless otherwise indicated (P), denoting a port rounding.

## 13 NAVIGATING LION ISLAND

---

- 13.1 At all times special attention should be given when navigating Lion Island and its surrounds. The effects of swell, breaking seas and the possibility of uncharted rocks must be carefully considered. **All boats must keep at least 80 metres from Lion Island when rounding.**

It is noted that there are possibly at least four hazards when rounding the island. Remember at low tides the risk of these hazards may be increased. Crews are reminded to keep an active watch. The Race Committee may take action against yachts that do not comply with the rounding requirements.

Further information about navigating Lion Island is attached to these Supplementary Sailing Instructions.

**WEAR A LIFE JACKET**  
**DON'T RISK YOUR LIFE**

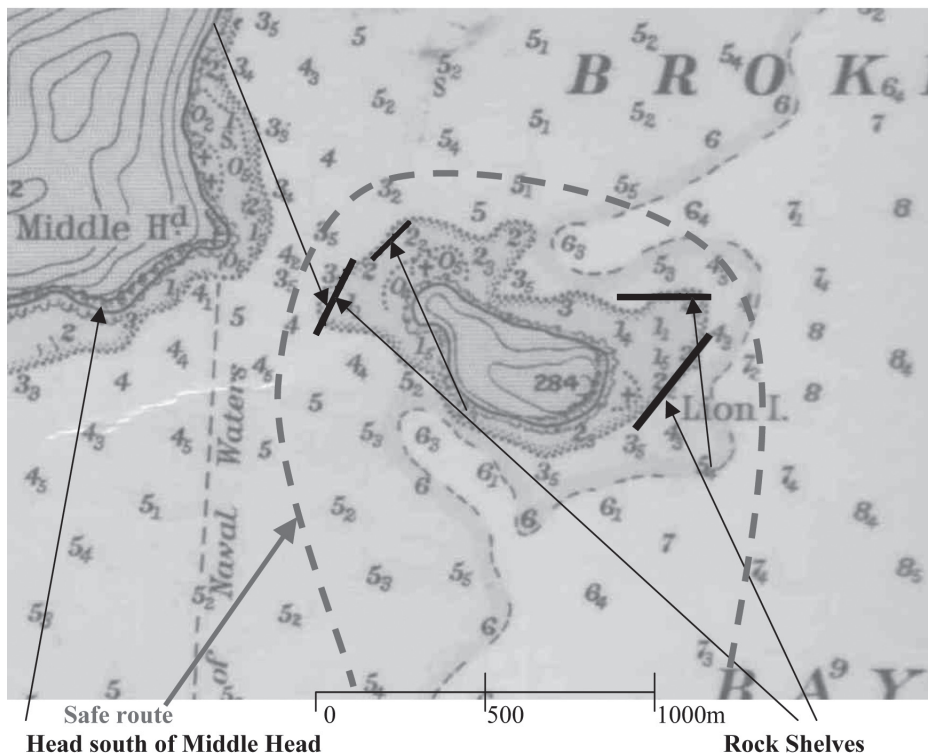


## Navigating Lion Island with Notes on Potential Hazards including Uncharted Rocks

The following outline has been prepared to remind RPAYC Members of some of the navigation hazards when rounding Lion Island.

This document has been prepared with the assistance of the Late Ron Hayden (who has had an encounter with "Pinnacle Rock") and Angus Gordon who has been involved with some extensive surveys of the waterway and has provided some informative charts. "Pinnacle Rock" has not been added to any official chart and Angus has suggested that it may be a raised portion of the rock shelf on the western side. The chart used is AUS 133 which is dated 1952 and has soundings in fathoms. Later charts do not show as much detail e.g AUS 204. AUS 133 shows more extensive rock shelves than those from other surveys and this may be a result of caution on the part of the RAN Hydrographic Service.

### Possible location of " Pinnacle Rock"



1952 Chart of Broken Bay, AUS 133 cropped to show Lion Island and modified by Brian Gray to show location of some navigation hazards

Yachtsmen should navigate with caution especially when passing the NE corner of Lion Island and again when passing the western side of the Island. The recommended safe course is shown as a dashed line.

### **Passing the Eastern Side of the Island**

As a rule, yachts should stand off the Island by a distance which is equivalent almost to the length of the Island and then sail past the Island for a distance which is at least the width of the Island before turning to run down the northern side.

### **Passing the Western Side of the Island**

When turning to round the western side yachts should leave at least 50% of the distance between the northwest corner of the island and Middle Head as clearance and then turn to sail to Pittwater only when they have sailed well past the line between the headland south of Middle Head and the southern side of the island.

**Tides** are very important as the **low water** clearance at the rock shelves on both sides of the Island is about 2m less the height of any rocks or outcrops on the rock shelves. Also waves and swell can increase the risk of hitting the rock shelves.

**Tides and swell** conditions should be checked before attempting a rounding of the Island.

Prepared by Brian Gray  
May 2009





The Royal Prince Alfred Yacht Club



# Portuguese Beach Club Picnic

Sunday 27 May

Sunday 24 June

Sunday 29 July

Sunday 26 August



The Commodore invites all Members and guests to enjoy a Sunday BBQ at Portuguese Beach.

Casual yacht and dinghy race from 10am or  
just cruise at your own pace.

After the race there will be a BYO BBQ on the beach.

The Club will supply a tender service from your boat to the beach.



9998 3700



sailing@rpayc.com.au



www.rpayc.com.au

