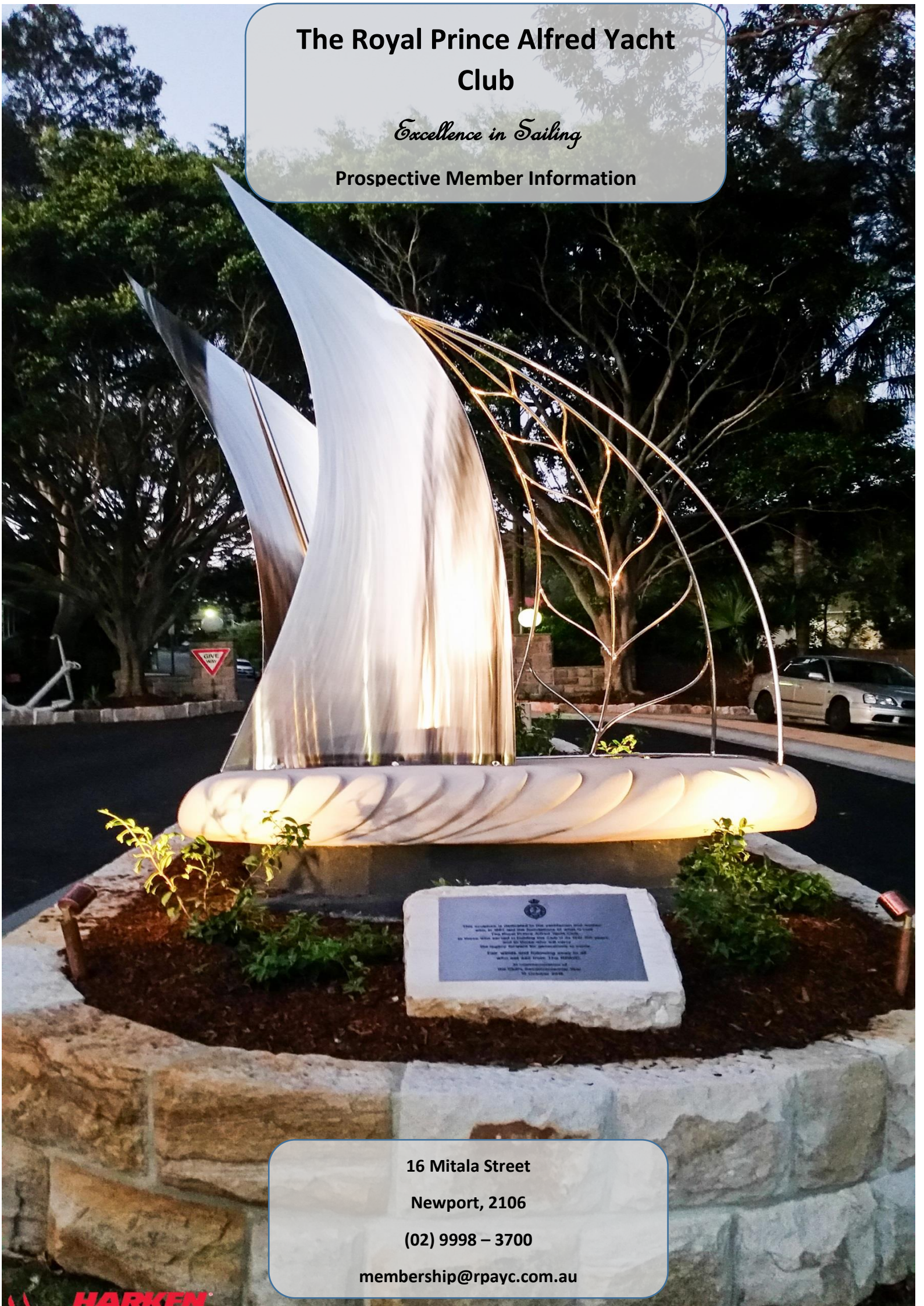


The Royal Prince Alfred Yacht Club

Excellence in Sailing

Prospective Member Information



16 Mitala Street

Newport, 2106

(02) 9998 – 3700

membership@rpayc.com.au

CATEGORIES OF MEMBERSHIP

- Full Ordinary - for all boat owners
 - Full Family – boat owner, children aged 6-21 and a spouse (if applicable)
 - General - for non-boat owners
 - General Family – non boat owner, spouse (if applicable) and children aged 6-21
 - General Intermediate (for ages 22 -29) - for boat and non-boat owners
 - Spouse - for spouse/partner of Full and or General members
 - Youth - children aged 6-21 years
- ❖ Please note that non – boat owners can also apply for Full Ordinary membership if they wish.

APPLICATION PROCESS

- Application
- Fees & charges
- Legislative requirements
- Interview
- Election

HOW TO APPLY

Dependent on the timing of receipt of the application, the process should take approximately 4 weeks.

To commence the membership process, complete and return a *Nomination Form*. Forms are available from Reception at the Club or can be downloaded from our website www.rpayc.com.au. For convenience, our website offers online versions of the forms that can be filled out and returned via the website.

Please note there is a separate form for adults and youths.

All adult applications must be proposed and seconded by current RPAYC members. Proposers and Seconders must have been RPAYC members themselves for at least 12 months and have known the applicant for a period of at least 12 months. If the applicant is unable to provide a proposer and or seconder, contact membership:

Email: membership@rpayc.com.au

Phone: (02) 9998 3705.

FEES

Joining fee – A joining fee is payable on submission of application. Joining fees are:

Full member applicants- \$825

General member applicants- \$220

Spouse and Youth – no joining fee

Annual Subscription fees – the Club’s membership billing period runs May to April each year. Pro-rata subscription fees will be rendered when the nomination is approved by the Election Committee. Youth members pay no annual subscription under a Family membership.

House Entitlement (HE) - The House Entitlement contribution (\$220.00 per annum) is designed to encourage members to support the Club’s Food and Beverage facilities.

The HE is invoiced in two transactions each year (\$110 at the end of April and \$110 at the end of October). Once paid, the HE can be used to cover Food & Beverage purchases that have been charged to member accounts or to put towards annual Sailfit Gym membership fees. The HE expires on 30 April. If you do not make any F & B purchases within the year the HE is forfeited.

Youth Competition Support Fund (YCSF)

The YCSF is an internal fund to assist RPAYC Youth members in their pursuit of excellence when representing the RPAYC in external competitions. All members (with the exception of Spouse and Life Members) will be charged \$25 per year. As the major recipients of the fund, Youth members will be charged \$50 annually.

❖ A summary of fees and charges is over page.

LEGISLATIVE REQUIREMENTS

State laws (Registered Clubs Act) require the names and addresses of nominees to membership to be displayed on the Club’s official noticeboard for 14 days. With regard to nominee’s privacy only the suburb of residence is displayed.

INTERVIEW

Once the joining fee is paid and the 14 day noticeboard period has passed, an informal interview for the applicant(s) with either their proposer or seconder will be arranged. Applicants will meet with a member of the Membership Committee. This is a casual meeting used to ascertain the interests/needs of the applicant in regard to their use of the Club. Interviews are usually conducted on Saturday mornings.

ELECTION

The Membership Committee review the application following the interview and recommend it to the Election Committee for approval. Both Committees (Membership & Election) meet on the second Saturday of each month. Successful applicants will be notified following successful election.

For more information, contact membership on:

Phone: (02) 9998-3705

Email: membership@rpayc.com.au



The Royal Prince Alfred Yacht Club

Joining fees and annual subscription rates

01/05/2017 to 30/04/2018

Joining Fees (incl. GST)				
Full		\$825		
General - including Intermediate		\$220		
Spouse and Youth		No joining fee		
Subscription Rates				
Membership Category	House Entitlement	\$ Annual Subs incl. GST	\$ Youth Competition Support Fund	\$ Total
Full member (Boat owner)	Y	1430.00	25.00	1455.00
General (Non boat owner)	Y	572.00	25.00	597.00
General Intermediate 22-26	N	286.00	25.00	311.00
General Intermediate 27-29	N	429.00	25.00	454.00
Spouse (partner of Full or General member)	N	143.00	0	143.00
Youth (under 22)	N	143.00	50.00	193.00
Family packages available				
Children's subscriptions free when included in a family package. They will still be required to pay the YCSF annual charge of \$50.		If you are interested in a Family package, please contact the RPAYC Membership Coordinator on 02 9998 3705 or speak with our friendly Reception staff.		
House Entitlement Contribution (HE) & Youth Competition Support Fund (YCSF)				
HE				
The House Entitlement Contribution is designed to encourage members to support the Club's food and beverage operations. The HE is invoiced in two transactions. \$110.00 is invoiced at the end of April and \$110.00 is invoiced at the end of October. Once the invoice is paid, the HE can be redeemed through purchases charged to member accounts. The HE expires on 30 April. If you make no F & B purchases within the year the HE is forfeited.				
YCSF				
The Youth Competition Support Fund is an internal fund to assist RPAYC Youth members in the pursuit of excellence when representing the RPAYC in external competitions.				
Sailfit Fitness Centre				
To cover the costs of the Sailfit Fitness Centre, members using the facility will be required to pay an annual access fee (May to April), which is billed in May each year. Members are required to undertake an induction prior to using the Fitness Centre.				
Annual Fees				
Full member \$157 General & Intermediate members \$280 Youth member \$157				
Full Family \$437 General Family \$560				

ABOUT THE CLUB

“The Alfred’s”, as it is colloquially known was founded on 15 October 1867 and is one of the oldest yacht clubs in Australia.

The Alfred’s strength comes from a simple focus on its core Constitutional objective; *“to promote the sport of yachting and boating”* and its Vision; *“Excellence in Sailing”*.

Why not come to the Club and see for yourself.

Clubhouse Facilities

- Halyards Bar and Bistro offers relaxed alfresco dining, Wednesday through Sunday.
- Alfred’s Table on Friday evenings offers a superb a la carte dining experience.
- Edinburgh Bar on Friday evenings is the perfect place for a pre-dinner aperitif, with an open fire in winter and balcony to watch the sunset in in summer.
- Function and meeting rooms – available to hire free of charge for RPAYC Members.
- Jack Gale Centre (the Club’s training facility).
- Billiards room, featuring two full size billiard tables.
- Sailfit Fitness Centre.
- Laundry, showers, disabled amenities.

Enjoy all the advantages that membership of the RPAYC has to offer, which includes access to:

- Comprehensive Sailing program
- Year round keelboat racing
- Off the beach Centreboard racing
- Extensive cruising calendar
- Youth development program
- Learn to sail programs for children and adults
- Year round training courses and seminars
- Marina, hardstand and Club moorings
- Fully serviced Boatyard
- Training and sailing courses
- Complete waterfront repair facilities onsite including chandlery, riggers, brokerage, shipwrights, Electricians and engineers.
- Car parking in Club grounds
- Recreational moorings in Pittwater and the Hawkesbury waterways
- Tender service to moorings (within the tender service boundary area)
- Reciprocal arrangements with selected yacht clubs worldwide
- Complimentary Australian Sailing membership

	Full Member *	Full Family	General Member (incl. Intermediate)	General Family	Spouse	Youth
Vessel Storage	✓	✓	X	X	X	✓ Off the beach craft only
Discount marina fees	✓	✓	X	X	X	X
Access to tender service **	✓	✓	X	X	✓	X
Use of Clubs recreational moorings	✓	✓	X	X	X	X
15% discount in Boatyard on Antifoul	✓	✓	X	X	X	X
Discount on training course fees	✓	✓	✓	✓	✓	✓
Free season race entry ***	✓	✓	X	X	X	X
Complementary AS membership	✓	✓	✓	✓	✓	✓
Access to all Club carparks on weekdays	✓	✓	✓	✓	✓	X
Lower level Car Park access on Saturdays	✓	✓	X	X	X	X
15 % Discount in Food & Beverage	✓	✓	✓	✓	✓	✓
House Account charging facility	✓	✓	✓	✓	✓	X
Function Rooms hire fee waiver	✓	✓	✓	✓	✓	X
Access to Sailfit Gym membership ****	✓	✓	✓	✓	✓	✓
AGM and General Meeting voting rights	✓	✓	X	X	X	X
Birthday voucher	✓	✓	✓	✓	✓	X
Temporary membership & rights at Reciprocal Clubs	✓	✓	✓	✓	✓	X
Become a General/Sailing Volunteer	✓	✓	✓	✓	✓	✓
Free WiFi	✓	✓	✓	✓	✓	✓

* Do not have to be a boat owner to be a Full member, however, boat owners CAN ONLY be Full members.

** Tender service is limited to the RPAYC tender service boundary area only. Full members with boats outside this area will not have access to the tender service.

*** Only available to Full members who are permanent RPAYC berth, mooring or hardstand facility holders. This does not include those on the waitlist for a facility or Full members who do not keep the boat at RPAYC.

**** Gym membership is an additional charge to Annual Subscription fees and an induction must be completed before membership is finalised.



RPAYC ON WATER ACTIVITIES

Yacht Racing

The Royal Prince Alfred Yacht Club is one of Australia's leading clubs within the sport of sailing and is regarded as one of the premier yacht clubs in Australia.

The Club's Sailing program and activities reflect this standing and are second to none. Our yacht racing program is innovative, safe and user orientated with a varied program year round, combining inshore and offshore racing. We pride ourselves on the ability to host high quality, professional events in a pristine environment. Racing is conducted all year round throughout the week. During Twilight hours, the addition of a women's Tuesday series and Thursday open series is conducted.

Members and visitors of any age or ability can enjoy the various classes, divisions great sailing locations and competition. The Club has a wide and varied range of sailing activities available, including training (on water and shore based courses) and seminars to increase your skills.

Crew are always welcome to join races, Register using the online crew register "Crew With Me" at <http://crewwith.me/>.

Cruising

Cruising activities are organised by the RPAYC Cruising Committee for all members and their sailing friends. The Cruising Committee organises a comprehensive event schedule which includes educational evenings with expert and informative speakers, social events and sailing activities.

Inshore cruises in the Pittwater/Broken Bay/Hawkesbury area with their myriad of secluded bays, are arranged on a regular basis. A post-Christmas cruise is organised each year to a coastal destination over a period of around two weeks. Cruise planning is undertaken with the acknowledgement that cruising sailors do not venture out in unsuitable weather conditions.

Cruising in a group is not only a great way to make new friends, it also offers the less experienced sailor the added reassurance of knowing support and assistance is close by. The RPAYC Cruising Committee endeavours to have something for everyone.

Centreboard

Centreboard racing is conducted on Sundays over the summer months with the Icebreaker series run through winter. The RPAYC's Centreboard Division races the following Classes:

- International Optimists • Flying Eleven • International 29er • Laser Radial and Standard Rig • Finn's • Laser 4.7

Although RPAYC dinghy sailors have a long history of success on a state, national and international level; it's not all about medals, glory and international recognition. It's about having fun in a supportive environment that allows kids, youths and adults alike to meet and form an active family based community.

Using supported International Dinghy classes, parents and kids can race alongside one another and can take their sailing to whatever level they desire. The natural progression from class to class that exists at RPAYC allows for a seamless transition from dingy into keelboat sailing later on.

Contact the Sailing Office for more information:

Phone: (02) 9998 – 3771

Email: sailing@rpayc.com.au

SAIL TRAINING

The Royal Prince Alfred Yacht Club provides the largest Sailing School on Pittwater offering accredited Australian Sailing (AS) and Royal Yachting Association (RYA) courses.

Alfred's Training seeks to help you achieve your sailing goals, gain confidence on the water, whether you are Grand Prix racing or cruising up the coast. Offering options for kids through to adults, dinghies through to yachts, and high performance racing to first aid and sea safety, we can help you develop whatever skills you need.

We specialise in the delivery of courses for beginner sailors/new boat owners, boat handling skills and shore based professional qualifications.



Be introduced to sailing for the first time or develop racing and spinnaker skills on the Club's fleet of Elliot 7s!



Adult Keelboat Program



- 3 levels following a nationally recognised syllabus
- Officially certified training with Yachting Australia
- Gender specific and open courses
- Private sessions available
- Fully qualified instructors, with a 1:4 ratio

RPAYC runs the Tackers Program, a nationally recognised introductory program for 7 – 12 year olds!

- Fun, games based learning environment
- All safety equipment and boats provided
- Fully qualified instructors
- Safety boats that meet national best practice
- Courses in the holidays, and during school term



Kids Learn to Sail



The Alfred's has partnered with Above and Beyond Boating, and Surf Lifesaving Australia to deliver a wide range of programs!



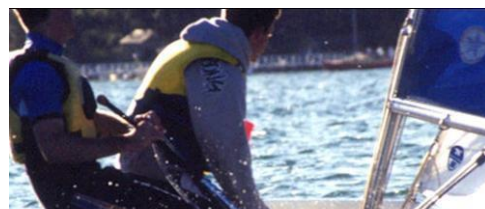
Shore Based Training



- First Aid qualifications
- VHF Radio Licencing
- Sea Safety Coaching (including the SSSC)
- Comprehensive navigation courses
- Private sessions on your own boat

RPAYC provides sailing opportunities for more than 250 school students a week during summer!

- High School learn to sail
- High School teams racing
- Primary School learn to sail
- Primary School fleet racing
- Interschool teams racing events



School Sailing



Contact the Sailing Office for more information on: (02) 9998 – 3771 or email sailing@rpayc.com.au

WATERFRONT

Our Facilities

The Club's Waterfront facilities are maintained to the highest level and holds a 4 ½ International Gold Anchor Rating and level 3 Clean Marina accreditation. The marina is managed by a dedicated team of experienced professionals who have a passion for the industry and are on hands to provide assistance with your vessel, including;

- Berthing assistance
- Tender service
- Services wharf access
- General assistance

The facility has 24 hour CCTV surveillance and after hours security patrols on site.

As a facility holder we will keep you well informed and you will receive regular communication from the Club and the Waterfront Department. We aim to make sure that you are able to store your vessel with confidence and that your sailing experience is made easy.

The RPAYC is an ideal base to race and cruise from or to explore the pristine waterways of Pittwater. As a facility holder you will enjoy the benefit of free race entry. We would like to invite you to inspect the facilities so you can start enjoying the Club, convenience, service and discounts available as a member of The Royal Prince Alfred Yacht Club.

Boat Storage Options

Berths A full floating concrete marina with 352 berths which can accommodate vessels up to 30m (98') and depth up to 15m (50'). Berths are accessible 24 hours a day and each berth has shore power and water.

Moorings 18 permanent moorings all within close proximity to the Club. Club moorings can accommodate vessels up to 22m (72') and a complimentary 7 day tender service is available to and from your vessel.

Hardstands two major hardstand areas are available accommodating up to 83 vessels. The hardstand cranes and boat ramps provide members with an easy and safe method of storing, launching and retrieving their vessels

Centreboard rack storage for up to 100 Centreboard dinghies.

Recreational Moorings 12 recreational moorings are available to Club members and are conveniently located at The Basin, America's Bay, Refuge Bay and Barrenjoey.

Dinghy Racks 30 racks available located in easy access areas.

Lockers Large storage lockers are available for the storage of vessel equipment and sails.

For more information, contact: Kylie Brown, Waterfront Services Manager

Phone: (02) 9998-3741

Email: waterfront@rpayc.com.au

THE ROYAL PRINCE ALFRED YACHT CLUB

SCHEDULE CHARGES AS OF 1ST JANUARY 2017

MEMBERS PERMANENT FACILITIES		
	PER FOOT PER MONTH	
Marina berth A-G arm	\$ 22.50	min. 30 foot
Marina berth L arm	\$ 25.30	min. 20 foot
Marina berth T heads A – F (full and half occupancy)	\$45/33.75	Min. 30 foot
Multi-Hull Vessels	\$33.75	
Mooring	\$11.70	min. 30 foot
Green Point Hardstand	\$13.10	
Crystal Bay Hardstand	\$12.70	
Crystal Bay Hardstand Rigged Centreboard	\$47.90	
Locker (Standard/Large)	\$61/\$71	per month
Centreboard OPTI (Bottom Levels)	\$32.60	per month
Centreboard OPTI (Mid / Top Level)	\$27.15	per month
Centreboard Racks (Bottom Levels)	\$38.00	per month
Centreboard Racks (Mid and Top level)	\$32.60	per month
Rigged Vessels	\$59.75	per month
Centreboard Racks (Storage)	\$65.15	per month
Tender Dinghy Racks (facility holder/non-facility holder)	\$38.80/\$53.50	per month

* All Charges are inclusive of GST ** “Actual Length Overall” is the maximum length of a vessel measured parallel to the waterline and includes all appendages to the hull such as rudders, bowsprits, davits and dinghies and protruding equipment such as anchors and spars.

*** Non-member fees are payable in advance – cheques not accepted - credit card payments incur a 2% surcharge.



Vessel Servicing

Housing a 50 tonne travel lift, the Boatyard has an industry leading reputation, specialising in being a 'one stop shop'. What separates us from other yards?

- We professionally spray (not roll) for a superior finish and longer lasting result.
- Two coats of antifoul and a third around the leading edges.
- A water blast and hard wet rub is included with all antifoul packages.
- Complimentary light acid wash on the topsides.
- Complimentary deck wash after completion.
- Punctuality and we work with our onsite tenants to complete the schedule of service.
- The price we quote, is the price you pay.

The Boatyard offers a pick up/delivery service for boats stored on Club facilities for all antifoul services.



For more information, contact: Monique Mobbs,
Boatyard Services Manager

Phone: (02) 9998 3751

Email: boatyard@rpayc.com.au

FOOD AND BEVERAGE

Halyards Bistro and Bar has beautiful water views and is the sailor's meeting place prior to and after racing. Come down for breakfast, Saturday and Sunday from 8am. We are open seven days a week, with a full Chef menu and daily blackboard specials Wednesday through Sunday, or drop in for a beverage and enjoy the sunset. To ensure a table book through Reception.

Alfred's Table opens on Friday evenings from 6pm for a more formal dining experience. The superb a la carte menu changes weekly. Bookings essential.

Admirals Cup Room/Pittwater Room/Edinburgh Bar – available for functions.

Trading Hours (vary according to season and trade, check the website for update times).

For more information contact Mandy Hansen, House Manager on:

Phone: (02) 9998-3732

Email: mandy.hansen@rpayc.com.au





Sailfit Objective

The focus of Sailfit is to create an environment that is welcoming and results driven whether your objective is general fitness, sailing related or weight loss. Members may use the facility independently, engage a personal trainer or join a class.

Meet the Trainers



Tana Anderson – Sailfit Supervisor (Contact Tana on 0478 034 659)

With 13 years' experience in strength training, 8 years in the health and fitness industry including 2 years as a business owner and 15 years playing tennis at an elite level, Tana brings a wealth of knowledge and experience to her training. Tana's passion lies in educating her clients on a holistic and healthy view of health and showing them a nutrition and exercise program to suit their specific needs that is fun, rewarding and sustainable. She loves nothing more than pushing her clients to achieve amazing results they never thought possible- whether that's finally being able to touch their toes, running a marathon or losing 10kg.



Dan Cook – Trainer (Contact Dan on 0431 834 242)

Dan comes with a wealth of knowledge and experience having been involved in the fitness industry for a number of years as a gym operator and Personal Trainer. He focuses on delivering fun and results driven 1on1 Personal training sessions and challenging group exercise for sailors. Dan specialises in weight loss and nutrition, rehabilitation, Strength training and sailing specific strength and conditioning.





Sailfit Annual Access Fee

The Sailfit annual access fee coincides with the annual subscription year May – April. The Sailfit access fee may be offset using the House Entitlement.

Full Members	\$159.00	Intermediate Members	\$284.00 pa
General Members	\$284.00 pa	Full Family Membership * (access for whole family)	\$443.00 pa
Youth Members	\$159.00 pa	General Family Membership * (access for whole family)	\$568.00 pa

*Individuals of Family memberships may choose to join Sailfit and pay only the single member fee.



*An induction is required for all members prior to using Sailfit. Please contact Tana Anderson to organise a convenient time to have your induction.